



2024

# NEW STUDENT GUIDE



2025



#WELCOME2MASON

# ACADEMIC CALENDAR

FALL 2024	
First Day of Classes	Monday, August 26
Labor Day (University closed)	Monday, September 2
Last Day to Add (Census)	Tuesday, September 3
Last Day to Drop (100% refund)	Monday, September 9
Last Day to Drop (50% refund)	Tuesday, September 17
Unrestricted Withdrawal Period	Wednesday, September 18 –Tuesday, October 1
Midterm Evaluation Period for Full Semester 100-200 Level Classes	Monday, September 23–Friday, October 18
Selective Withdrawal Period – Undergraduate Only	Wednesday, October 2– Monday, October 28
Fall Break (Classes do not meet)	Monday, October 14
Election Day (Classes do not meet)	Tuesday, November 5
Thanksgiving Recess	Wednesday, November 27–Sunday, December 1
Last Day of Class	Monday, December 9
Reading Day(s)	Tuesday, December 10
Examination Period	Wednesday, December 11–Wednesday, December 18
University Commencement	Thursday, December 19
SPRING 2025	
MLK Day (University closed)	Monday, January 20
First Day of Spring Classes	Tuesday, January 21
Last Day to Add (Census)	Tuesday, January 28
Last Day to Drop (100% refund)	Tuesday, February 4
Last Day to Drop (50% refund)	Tuesday, February 11
Unrestricted Withdrawal Period	Wednesday, February 12–Tuesday, February 25
Midterm Evaluation Period for Full Semester 100-200 Level Classes	Monday, February 17–Friday, March 21
Selective Withdrawal Period – Undergraduate Only	Wednesday, February 26–Monday, March 31
Spring Recess (Classes do not meet)	Monday, March 10–Sunday, March 16
Last Day of Class	Monday, May 5
Reading Day(s)	Tuesday, May 6 and Sunday, May 11
Examination Period	Wednesday, May 7–Wednesday, May 14
University Commencement	Thursday, May 15

## University Services

### Admissions

703-993-2000

### Contemporary Student Services

masoncss@gmu.edu

### Counseling and Psychological Services

703-993-2380

### Disability Services

703-993-2474

### Housing and Residence Life

703-993-2720

### International Programs and Services

703-993-2970

### Language Testing

703-993-1220

### Mason Recreation

703-993-5323

### Math Placement Testing

703-993-4237

### New Student and Family Programs

703-993-2475

### Student Accounts

703-993-2000

### Student Financial Aid

703-993-2000

### Student Health Services

703-993-2831

### Student Services Center

703-993-2000

### Student Success Coaching

703-993-2470

### Student Support and Advocacy Center

703-993-3686

### University Information

703-993-1000

Visit [registrar.gmu.edu/calendars](https://registrar.gmu.edu/calendars) for the most up-to-date academic calendar or scan the QR code:





## FINAL STEPS TO BECOME A MASON PATRIOT

Once you return home from Orientation, be sure to review these items and ensure you have completed all the final steps for success as a Mason Patriot. Welcome to the Mason Nation!

- ❑ **Set up your Mason email and Patriot Pass** if you have not done so already. Visit [mail.gmu.edu](mailto:mail.gmu.edu) for instructions.
- ❑ **Get your Mason ID.** Visit [masoncard.gmu.edu](http://masoncard.gmu.edu) to learn about your physical or mobile digital options.
- ❑ **Purchase a parking permit at [parking.gmu.edu](http://parking.gmu.edu).** Permits can be purchased after course registration is complete starting in July.
- ❑ **Plan for Move-In Day.** Find more information at [housing.gmu.edu](http://housing.gmu.edu). Find off-campus housing at [och.gmu.edu](http://och.gmu.edu).
- ❑ **Reserve copies of your textbooks** to rent or own through the campus bookstore at [gmu.bncollege.com](http://gmu.bncollege.com).
- ❑ **Submit the Mason Immunization Record Form** by the required deadline. See page 35 for more information.
- ❑ **Submit your final transcripts and test scores** to the Office of Admissions at [ugtrans@gmu.edu](mailto:ugtrans@gmu.edu).
- ❑ **Attend the Preamble, August 22–25, 2024.** Open to all new students, freshmen, and transfers.
- ❑ **Plan your Welcome2Mason schedule.** For a list of events and a calendar, visit [welcome2mason.gmu.edu](http://welcome2mason.gmu.edu).
- ❑ **Take the CliftonStrengths Assessment** before classes begin by visiting [strengths.gmu.edu](http://strengths.gmu.edu).
- ❑ **Register for Mason's Resilience Badge in Blackboard.** [wellbeing.gmu.edu/students/student-resilience-badge](http://wellbeing.gmu.edu/students/student-resilience-badge)

For help in navigating any other steps, feel free to contact New Student and Family Programs at [orientu@gmu.edu](mailto:orientu@gmu.edu) or 703-993-2475.

Scan here to access the new student orientation website.



# TABLE OF CONTENTS

## New Student Resources

History and Traditions . . . . .	6
Campus Events and Athletics . . . . .	8
Navigating Fairfax and Washington, D.C. . . . .	10
New Student Programs . . . . .	12
Student Success Coaching . . . . .	14
Patriot Experience . . . . .	15
Stay Connected as a Mason Family . . . . .	16
Get Involved . . . . .	16
Come Back to Visit . . . . .	17
Stay Informed . . . . .	17
Connect with Us! . . . . .	17
Parent and Family Council . . . . .	18
Mason Family Connection . . . . .	19
University Studies . . . . .	20

## Life At Mason

University Life . . . . .	24
Involvement and Engagement . . . . .	25
Mason's Regional Locations . . . . .	25
Student Involvement . . . . .	26
Leadership Education and Development (LEAD) Office . . . . .	27
Student Media . . . . .	28
Mason Recreation . . . . .	29
Housing and Residence Life . . . . .	30
Freedom of Expression at George Mason University . . . . .	31
Diversity and Inclusion at Mason . . . . .	32
Contemporary Student Services . . . . .	32
Office of International Programs and Services . . . . .	32
Center for Culture, Equity, and Empowerment . . . . .	33
LGBTQ+ Resources Center . . . . .	33
First-Gen+ Center . . . . .	33
Women and Gender Studies . . . . .	33
Support Services . . . . .	34
Counseling and Psychological Services . . . . .	34
Student Health Services . . . . .	34
Learning Services . . . . .	36
Disability Services . . . . .	36
Student Support and Advocacy Center . . . . .	36

Student Rights and Responsibility . . . . .	38
Code of Student Conduct . . . . .	38
Honor Code . . . . .	38
Title IX . . . . .	39
Meet the Patriot Leaders . . . . .	40
Planning a Visit to Mason . . . . .	44
Handshake . . . . .	45
Well-Being at Mason . . . . .	46
Mason Chooses Kindness . . . . .	47
Libraries . . . . .	48
Office of Student Creative Activities and Research (OSCAR) . . . . .	49
Global Education Office . . . . .	50
Smithsonian-Mason School of Conservation . . . . .	51
Mason 360 . . . . .	52
Burnalong . . . . .	53

## University Services

Mason Student Services Center . . . . .	56
Student Accounts . . . . .	57
Student Financial Aid . . . . .	58
Information Technology Services . . . . .	60
Shop Mason . . . . .	62
Parking and Transportation . . . . .	64
Mason Card Office . . . . .	66
Mason Dining . . . . .	67
Print and Mail Services . . . . .	68
Bookstore and PatriotTech . . . . .	70
Mason Arts . . . . .	71
Fairfax Campus Map . . . . .	72
Mason Ready . . . . .	74
Emergency Preparedness Training . . . . .	75



## Academic Schools and Colleges

College of Education and Human Development . . .	78
College of Public Health . . . . .	79
College of Humanities and Social Sciences. . . . .	80
College of Science . . . . .	81
College of Visual and Performing Arts . . . . .	82
Donald G. Costello College of Business. . . . .	83
Schar School of Policy and Government . . . . .	84
School of Integrative Studies . . . . .	85
Jimmy and Rosalynn Carter School for Peace and Conflict Resolution . . . . .	86
College of Engineering and Computing. . . . .	87
Academic Minors . . . . .	88

## Academic Essentials

Mason Core . . . . .	92
Academic Planning Worksheet . . . . .	96
Office of the University Registrar . . . . .	99
Mason Online . . . . .	100
Academic Advising at Mason . . . . .	101
Mason Advising Timeline . . . . .	102
Placement Testing . . . . .	104
Patriot Success . . . . .	105
Student Information Privacy (FERPA). . . . .	106
Academic Records FAQ . . . . .	107
Transfer Credit Information . . . . .	108
Transfer Credit Evaluation Worksheet . . . . .	109









# NEW STUDENT RESOURCES





# HISTORY

## MASON'S STORY

### 1950s

#### 1957

George Mason starts its journey as a two-year branch campus of the University of Virginia.



### 1960s

#### 1964

George Mason College gets a permanent home in Fairfax.

#### 1965

First Mason Day

#### 1966

Mason adopts green and gold as the official school colors.

George Mason College becomes a four-year college, though still a part of the University of Virginia.

#### 1968

Mason's first graduating class, which consists of 52 graduates, receives degrees.

#### 1969

The Patriot is adopted as the official mascot.



### 1970s

#### 1972

George Mason College separates from UVA and becomes George Mason University.

#### 1977

Mason changes from a commuter school to a residential university.

#### 1979

Arlington Campus opens.



### 1980s

#### 1981

First International Week

#### 1985

The Patriot Center opens.

Mason's women's soccer team wins the national championship.



### 1990s

#### 1990

Center for the Arts opens.

#### 1996

Mason's track and field team wins division championship.

The George Mason statue is unveiled.

#### 1997

Prince William Campus opens.





## 2000s

### 2004

Mason releases the “Mason Star” athletics logo.

### 2006

Mason’s men’s basketball team goes to the Final Four.



## 2010s

### 2013

Mason joins the Atlantic 10 Conference.

Men’s soccer, women’s indoor and outdoor track and field, and Mason baseball all win A-10 conference titles.

### 2015

The Patriot Center becomes EagleBank Arena.

Prince William Campus becomes the Science and Technology Campus.

### 2016

Mason attains R1 very high research activity status.



## 2020s

### 2020

Mason welcomes President Gregory Washington.

Mason shifts to fully virtual operation during the COVID-19 pandemic.

### 2021

New academic building Horizon Hall opens for start of spring 2021 classes.

The Enslaved People of George Mason Memorial is installed on Wilkins Plaza.

### 2022

The Arlington Campus becomes Mason Square.

Mason celebrates 50 years as an independent university.



## The Fight Song—Onward to Victory

The George Mason University Fight Song has been around for more than 25 years, but it has largely been an instrumental tune. In 2009, the Green Machine bandleader Michael “Doc Nix” Nickens wrote the new fight song, “Onward to Victory.”

**HAIL TO  
GEORGE MASON!**

**DON YOUR  
GREEN AND GOLD!**

**WE’RE GOING TO SING FOR  
GEORGE MASON,  
PATRIOTS  
BRAVE AND BOLD!**

**WE’RE GOING TO CHEER FOR  
GEORGE MASON,  
PROUD FOR THE WORLD TO SEE!**

**WE’LL PROVE OUR HONOR  
AND MIGHT, AND WE’LL  
FIGHT! FIGHT!  
FIGHT!**

**AS WE MARCH ONWARD  
TO VICTORY!**

**G! M! U! GMU! WHAAT!  
GO GREEN! GO GOLD!  
FIGHT! FIGHT! FIGHT!**



# CAMPUS EVENTS

ANNUAL EVENTS HELD BY MASON

Fraternity and Sorority  
Recruitment and Intake  
Get Connected Fair  
IVth Night  
Transfer Nation

## 9/11 DAY OF SERVICE

SEPTEMBER

Student Government Elections  
Kings Dominion Haunt Trip

## MASON MADNESS

OCTOBER

Family Weekend  
HIV/AIDS Awareness Fashion Show  
Hunger and Homelessness  
Action Week  
First-Gen Week

## GOLD RUSH

NOVEMBER

Black and African  
Heritage Month  
Winter Welcome2Mason

## HOMECOMING

FEBRUARY

Geek Week  
Kings Dominion Trip  
Greek Week  
Women's History Month

## PRIDE WEEK

MARCH

International Week  
Student Government Elections  
Asian American Heritage Month

## MASON DAY

APRIL



# TRADITIONS

GENERATION TO GENERATION

- Find the class sign that matches the year you started at Mason and add your name.
- Rub the toe of the George statue for good luck.
- Participate in Green and Gold Fridays.
- Take photos at the George statue.
- Avoid stepping on the plaque.
- Paint a student organization bench.
- Explore the old campus tunnels.
- Decorate the George statue.
- Decorate your cap for graduation!
- Paint the Mason cubes.





# ATHLETICS

NCAA, DIVISION I



- CROSS COUNTRY **M/W**
- BASKETBALL **M/W**
- TENNIS **M/W**
- SWIMMING AND DIVING **M/W**
- WRESTLING **M**
- TRACK AND FIELD **M/W**
- ROWING **W**
- BASEBALL/SOFTBALL **M/W**
- VOLLEYBALL **W**
- GOLF **M**
- LACROSSE **W**
- SOCCER **M/W**



## New Student Bucket List

- Indulge at the Fairfax Chocolate Lovers Festival in February.
- Study with a friend and have coffee at De Clieu.
- Experience the Community Farmer's Market.
- Go hiking with some friends at Great Falls.
- Go ice skating at the Fairfax Ice Arena.
- Go shopping at Fair Oaks Mall.
- Have lunch in Old Town Fairfax.
- Sign up for an Outdoor Adventures trip.
- Have a picnic at Burke Lake.
- Attend the City of Fairfax Fall Festival in October.

## Shop and Eat



Old Town Fairfax is filled with great restaurants, cafés, and stores! With options like Thai, Japanese, Mediterranean, and more, you will be able to find a place to eat that will leave everyone full and satisfied!

## Historic Fairfax



The City of Fairfax has a rich history. There are perfectly preserved historic buildings (including the site of the first fatality of the Civil War and a Civil War home featuring soldier graffiti) that many visitors find intriguing. The Fairfax Museum and Visitors Center is another fan favorite that everyone should check out!





## Shop and Eat



The nation's capital is filled with history, monumental buildings, and striking landmarks, but it is also home to some of the greatest shops and restaurants around. From Indian, Creole, Mongolian, and Chinese, to traditional American cuisine, it can all be found in Washington, D.C. DuPont Circle, Union Station, U Street, and Chinatown are some fan favorite locations where you can experience delicious food and unique shops. Lastly, don't forget about the many tasty dessert locations that D.C. has to offer.

## The District of Columbia



The Smithsonian museums are free and open to the public every day of the year except Christmas Day. With 19 museums and galleries, you will be able to find something to keep you entertained, occupied, and educated. With our campus so close to D.C., you won't want to miss the opportunity to absorb the rich history and culture provided by the Smithsonian exhibits!

## New Student Bucket List

- Ride the Metro into the city.
- Watch the Washington Commanders at Commanders Field
- Visit the national monuments.
- Find the hidden George Mason statue.
- Go to a Nationals game.
- See the Smithsonian's ZooLights from November to January.
- Watch a free concert at the Yards Park.
- Celebrate the Cherry Blossom Festival in the spring.
- Enjoy a free performance at the Kennedy Center.
- Find a favorite food truck.
- Take a free tour of the White House or U.S. Capitol.
- Do a cupcake crawl in Georgetown.
- Go for a run on the National Mall.





# NEW STUDENT PROGRAMS

WELCOME HOME, PATRIOTS!



## New Student Bucket List

- Learn the fight song.
- Join or create an organization or club on campus.
- Play on an intramural sports team.
- Take a group fitness class at the AFC or RAC.
- Hang out at the Ridge.
- Try every dining hall on campus at least once.

## The Preamble



**August 22–25, 2024**

Kick off your college experience at Mason with the newest group of Patriots! There are a number of activities to help support your transition and first weekend on campus, such as the Opening Convocation in EagleBank Arena, social and academic programming, and the fall kick-off event. Visit [welcome2mason.gmu.edu/thepreamble](https://welcome2mason.gmu.edu/thepreamble) for more information.

## Welcome2Mason



**August 25—September 30, 2024**

Join the rest of the Mason community as we welcome new students to a new year. Welcome2Mason events span the first few weeks of the fall semester and provide countless opportunities for students to get involved, meet new people, and learn more about our beautiful campus. For a complete list of scheduled events, visit [welcome2mason.gmu.edu](https://welcome2mason.gmu.edu). Signature events include Step Expo, Mason Transfer Nation, academic department receptions, Involvement Fair and on-campus job fairs, “Ask Me” tents across campus, and other welcome activities.

## Student Success Coaching



Student Success Coaching is on the journey with you to transition to college, make the most of your student experience, and work out what success looks like for you while at Mason. Success Coaches will help you develop and implement personal, career, and academic goals, as well as identify resources to enhance your experience as a Patriot. Staying engaged with your coach will lead you to success at Mason!



## Patriot Experience



Looking for a way to get connected to the campus community, while engaging in experiences related to well-being, career readiness, and global citizenship? Design your own Mason experience through the Patriot Experience program! Patriot Experience is a great way to become involved on campus; network with faculty, staff, and your peers; increase leadership and critical thinking skills; and experience educational opportunities outside the classroom. Every fall, new students can participate in Patriot Experience's First Year Challenge, which encourages students to participate in at least 15 items within the Patriot Experience tracks and earn some great swag items. Follow Patriot Experience on Instagram (@PatriotExperience) and learn more about the program through Mason360!

### New Student Bucket List


- Take a class in a subject you know nothing about.
- Go see a performance in the Center for the Arts.
- Visit the Presidents Park Greenhouse.
- Attend Mason Madness.
- Take the CliftonStrengths Assessment.
- Travel to a new country with the Global Education Office.
- Attend International Week events.





## Student Success Coaching

### CONNECT WITH US:

 703-993-2470

 SUB 1  
Suite 3600

  
@MyMasonCoach

  
mycoach@gmu.edu

  
coaching.gmu.edu

Scan here to find  
your Success Coach!



## WHAT IS SUCCESS COACHING?

Success Coaching helps students transition to college, make the most of their student experience, and work through their own definition of success while at Mason.

## WHAT IS THE ROLE OF A SUCCESS COACH?

Success Coaches will discuss all aspects of a student's life that affects their overall well-being, including but not limited to the following focus areas:

### OUR FOCUS AREAS



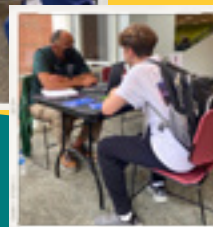
## STUDENT TESTIMONIALS

*"I feel like for the most part I know what I should or shouldn't be doing, but talking to my Success Coach makes me feel like I am on the right track every time I meet with him. It's reassuring and it's good to know that you have a support system."*

*"We covered a few of my questions about classes and just things at Mason in general. She helped me feel less overwhelmed by it all."*



*"As a result of working with my success coach I developed a strategy to organize all of my assignments and complete them on time."*



*"Made me feel very comfortable and safe being able to talk about my fears and goals— he was very reassuring and helped me plan achievable goals."*





# ARE YOU **NEW** TO MASON? CHECK OUT **PATRIOT EXPERIENCE!**

## CORE PATRIOT EXPERIENCE TRACKS:

GLOBAL  
CITIZENSHIP

LEADERSHIP & SERVICE

EQUITY, DIVERSITY,  
& INCLUSION

WELL-BEING

PHYSICAL

MENTAL

FINANCIAL

SOCIAL

CAREER  
READINESS

SCAN TO JOIN THE PATRIOT  
EXPERIENCE ON MASON360



## MISSION

THE PATRIOT EXPERIENCE PROVIDES STUDENTS WITH A FOCUSED APPROACH TO PREPARE FOR LIFE AFTER MASON BY DEVELOPING LIFE SKILLS THROUGH SELF-DIRECTED EXPERIENTIAL LEARNING.

## VISION

THE PATRIOT EXPERIENCE ADDS INTENTIONALITY TO THE STUDENT EXPERIENCE.

LOG IN TO MASON 360 AND START COMPLETING PE ITEMS TODAY!



LOOKING TO BE MORE INVOLVED ON  
CAMPUS?

AND ACCESS CAMPUS RESOURCES THAT  
FIT YOUR NEEDS AND INTERESTS?

**10** ITEMS  
+ **15** WEEKS  
= FREE PE SWAG

JOIN THE FIRST YEAR CHALLENGE DURING YOUR  
FIRST YEAR AT MASON!



Exclusively for transfer students, the Transfer Track connects you to resources and services to support your success at Mason.

Explore the Transfer Track in Mason360!  
To locate the Transfer Track, go to My Activity then  
My Checklists.

LEARN MORE & STAY CONNECTED WITH US



MASONPE@GMU.EDU



@PATRIOTEXPERIENCE

http://



COACHING.GMU.EDU/PATRIOTEXPERIENCE

# STAY CONNECTED AS A MASON FAMILY

New Student and Family Programs (NSFP) recognizes the important role families play in their student's development and success at Mason. NSFP serves as a liaison between the university and families and provides an outlet for families to become active members of the Mason community through programming and outreach.

Take advantage of the following resources and stay connected to Mason throughout the year!

## Get Involved

### PARENT AND FAMILY COUNCIL

The Parent and Family Council provides an opportunity for parents and families to meet with university leadership, volunteer at events, and become actively engaged and informed members of the Mason community.

### PARENT AND FAMILY FUND

The Parent and Family Fund offers parents and families the opportunity to play a role in building and shaping an exemplary educational experience for Mason students. You can be part of every student's success by giving a gift of any size at any point throughout your student's time at Mason.

### FAMILY FAREWELL

All families are invited to attend Family Farewell on the same day(s) as First-Year Student Move-In prior to the start of the fall semester. Light refreshments will be provided after an exciting and emotional day of moving your student into their residence hall.

### FAMILY SUPPORT SERIES

The Family Support Series is intended to help parents, families, and supporters understand how they can best support their student while at Mason. Webinars are typically held in the evenings, last approximately one hour, and are recorded and made available following each session.





## Come Back to Visit

### FAMILY WEEKEND

**October 18–20, 2024**

We encourage all families to join us for our annual university-wide celebration that takes place each fall. Events are designed to allow families to meet one another, become familiar with university resources, spend time with their student, and learn more about life as a Mason Patriot!

## Stay Informed

### WEBSITE

If you have a question about Mason and aren't sure where to start, visit [masonfamily.gmu.edu](https://masonfamily.gmu.edu) and take advantage of the multitude of resources available for our Mason families.

### MASON FAMILY CONNECTION

Everything needed to make the most of your experience is within the Mason Family Connection at [gmucampusesp.com](https://gmucampusesp.com). Find your community within our larger family network, customize the content and frequency you receive updates, and more.

## WHAT MASON FAMILIES ARE SAYING

Every semester, we survey families and ask about connection to Mason, feelings of value as members of our community, and preferred methods and levels of communication and engagement.

- 80% feel connected to the university
- 87% feel the university values families as an important part of the community
- 83% feel communication and resources from the university are sufficient

## Connect with Us!

✉ [families@gmu.edu](mailto:families@gmu.edu)

📞 703-993-2475

🏠 [masonfamily.gmu.edu](https://masonfamily.gmu.edu)

🌐 Mason Family Connection ([gmucampusesp.com](https://gmucampusesp.com))

📷 @masonnsfp

📘 /masonnsfp



New Student and  
Family Programs





# Meet the Parent and Family Council

The Parent and Family Council (PAFC) provides an opportunity for parents and families to meet with university leadership, volunteer at events, and become actively engaged and informed members of the Mason community.

## Parent and Family Council Members

- **Swapna Agarwal;** Ashburn, VA
- **Angela Boone;** Birmingham, AL
- **Carol Brown;** Springfield, VA
- **Rhonda Chezek-Peters;** Alexandria, VA
- **Karin DiMaggio;** Virginia Beach, VA
- **Faisal Hasan;** Fairfax, VA
- **Kelly Jaynes;** Apex, NC
- **Amy Jospa;** Plainview, NY
- **Yasmeen Lalani;** Dallas, TX
- **Nancy Lu;** Herndon, VA
- **Peter Moyer;** Darnestown, MD
- **Renee Myers;** Lumberton, NJ
- **Pam O'Connor;** Raleigh, NC
- **Alicia Ransom;** Knoxville, TN
- **Cherice Taylor;** Los Angeles, CA
- **Dawn Timmons-Jones;** Stafford, VA
- **Jill Wallis;** Fairfax, VA
- **Allyson Zak;** Richmond, VA

## A way to stay involved with your student and Mason.

Access for Mason families sponsored by New Student and Family Programs.



## Your one-stop shop for:



Access to important campus news and deadlines



Personalized newsletters on your schedule



Announcements via email



Sharing of content with friends and family



# UNIVERSITY STUDIES

*The Right Start!*

## TRANSITION. CONNECTION. SUCCESS.

Want to:

- Develop academic and personal success skills?
- Learn about campus resources and opportunities?
- Connect with faculty and fellow Patriots in a supportive, small-class setting?

*University Studies* transition courses are designed for you: Discussion-based, engaging courses developed for students new to Mason (see **next page** for course details!).

### REGISTER DURING ORIENTATION ON PATRIOT WEB!

- Speak with an advisor about which course is right for you
- 0 or 1 credit courses available



@GMU\_UNIVSTUDIES



For more information, visit us at: [UnivStudies.gmu.edu](https://UnivStudies.gmu.edu)

Questions? Email: [univ@gmu.edu](mailto:univ@gmu.edu)





# University Studies

*The Right Start!*

University Studies offers transition courses for first-year and transfer students that provide practical tools on how to adjust and excel as a member of the George Mason University community and beyond. The course will connect you to campus resources, academic and career success tools, as well as personal development and well-being opportunities. Open to all undergraduate students as they transition into college, determine their major and solidify their career path, grow academically and personally, and get involved on campus. Co-taught by a Mason faculty and a peer advisor (an undergraduate student there to support the students). Counts as a general elective toward graduation.

## UNIV 100

*Introduction to Mason (1 cr.):* Assists first-year students with their transition from high school to college life at Mason. Focuses on getting to know Mason resources, academic skill-building, personal development, connecting with the Mason community and career preparation. All sections share a core curriculum and certain sections focus on a particular theme, student population, or course of study. Connect with faculty and friends while learning how to make the most out of college!

## UNIV 108

*Mason Transitions (0 or 1 cr.):* These courses are for specific student populations, such as those in certain colleges or affiliated with an identity-based group on campus.

## UNIV 150

*Learning Communities (0 or 1 cr.):* This course is for students who are members of a first year LC. It is the learning component of the program for students who live together in a residence hall. The course follows the core University 100 curriculum, but is tailored to the particular theme or academic discipline of the LC.

## UNIV 300

*Transfer Transition (0 or 1 cr.):* Assists new transfer students with a successful transition to Mason. It addresses academic success, time management, course schedule planning, career readiness, degree requirements, and other university policies and procedures. Students explore campus resources and opportunities for engaging in the Mason community. (Open to transfer students in their first or second semester at Mason.)



UNIVERSITY STUDIES  
univstudies.gmu.edu

REGISTER DURING ORIENTATION ON PATRIOT WEB!





# LIFE AT MASON

A young woman with dark hair is smiling at the camera. She is holding a bright yellow t-shirt that has the words 'WE ARE MASON' printed in green, bold, block letters. She is also holding a white t-shirt with green lettering that includes 'ON' and 'Y'. She is wearing a green drawstring bag and a black bag with white polka dots. The background shows a crowd of people at an outdoor event, with a brick building and trees visible in the distance.





# UNIVERSITY LIFE

***University Life (UL) cares for the whole student by promoting inclusive well-being and fostering lifelong learning to prepare ethical leaders for the world.***

Our four strategic goals and accompanying strategies serve as guideposts for all UL professional staff and the more than 1,000 undergraduate and graduate student assistants over the next four years in delivering an exceptional student experience where **every student succeeds**.

## The University Life Mission

To engage students in educationally purposeful experiences resulting in student learning and development, academic success, and degree completion. We do so by:

1. Fostering self-discovery and teaching students to navigate transitions throughout their Mason experience.
2. Engaging our diverse, global, and multicultural community to enrich the educational environment, promote mutual respect and civility, and develop global citizens.

3. Empowering students to be socially conscious leaders and promoting democratic and civic engagement.

4. Educating students about individual and community responsibility and holding them accountable for ethical practices, academic integrity, and high standards of personal conduct.

5. Promoting wellness, healthy lifestyle choices, and a culture of safety.

6. Creating opportunities and communities for student involvement and engagement with peers, faculty, staff, and administrators.

7. Embodying lifelong learning.

 [ulife.gmu.edu](http://ulife.gmu.edu)

# INVOLVEMENT AND ENGAGEMENT

## Mason's Regional Locations

### MASON SQUARE

Mason Square, in the Virginia Square neighborhood of Arlington County near Washington, D.C., focuses on graduate and professional programs. It offers graduate degrees in law, conflict analysis and resolution, policy, business, arts management, executive and professional education, and more. Mason Square is also home to the Institute for Digital Innovation. (For more information, visit [idia.gmu.edu](http://idia.gmu.edu).)

Available campus resources include a writing center, library, and a full range of University Life services. Open study lounges and a computer lab are available for student use. The campus is within walking distance of the Virginia Square—GMU Metro Station on the Orange Line.

🏠 [masonsquare.gmu.edu](http://masonsquare.gmu.edu)

### SCIENCE AND TECHNOLOGY CAMPUS

Mason's Science and Technology Campus in Manassas is in Innovation Park, the largest research business park in Northern Virginia, home to technology companies and government agencies conducting cutting-edge research. It offers select courses in applied information technology, advanced biomedical science, criminology, education, kinesiology, mechanical engineering, and more. The campus is home to the 300-seat Verizon Auditorium, the Freedom Aquatic and Fitness Center, the Mason Center for Team and Organizational Learning (The EDGE), the Hylton Performing Arts Center, the Institute for Biohealth Innovation, the Biomedical Research Laboratory, and Beacon Hall (graduate student housing).

🏠 [scitechcampus.gmu.edu](http://scitechcampus.gmu.edu)

### MASON KOREA

Located 25 miles from Seoul in Songdo, South Korea, Mason Korea currently offers undergraduate programs in business, computational and data sciences, computer game design, conflict analysis and resolution, economics, and global affairs; graduate programs in computational science (master of science) and law (master of laws); and supports all Mason Core requirements. The campus includes state-of-the-art teaching facilities, performing arts centers, and student housing. To learn more about how you can study abroad at Mason Korea, visit the website.

🏠 [masonkorea.gmu.edu/us](http://masonkorea.gmu.edu/us)

### MASON IN LOUDOUN

Co-located with Northern Virginia Community College, Mason in Loudoun offers coursework in nursing, health science, education, information technology, and management, along with undergraduate general education courses.

🏠 [loudoun.gmu.edu](http://loudoun.gmu.edu)

### SMITHSONIAN-MASON SCHOOL OF CONSERVATION

Offering residential, hands-on, interdisciplinary programs in conservation biology for undergraduate and graduate students on the grounds of the Smithsonian Conservation Biology Institute in Front Royal, Virginia, learn how you can spend a semester at the Smithsonian-Mason School of Conservation by visiting the website.

🏠 [smconservation.gmu.edu](http://smconservation.gmu.edu)





## Student Involvement

We help students get connected to the Mason Nation through campuswide events, student organizations, trainings, student advocacy, and personal interactions to bring ideas to fruition, create a sense of belonging, and prepare students for success in their future.

### REGISTERED STUDENT ORGANIZATIONS

Joining one of our more than 350 RSOs can be a great way to start building your experience at Mason. There are plenty of groups to choose from, and if you don't see an organization that interests you, there is always the opportunity to start your own. Check out [mason360.gmu.edu](http://mason360.gmu.edu) for a complete list.

### STUDENT GOVERNMENT

Student Government offers Mason students the opportunity to represent and advocate for the interests of their peers and aims to use the feedback of their constituents to improve campus life. All students are welcome to attend a Student Senate, cabinet, or committee meeting to have their voices heard.

### FRATERNITY AND SORORITY LIFE

Fraternity and Sorority Life is a dynamic community of 1,250+ members, comprising more than 40 national and international fraternities and sororities. These organizations contribute to campus life and surrounding communities by hosting educational, service, and social events.

### PATRIOT ACTIVITIES COUNCIL

This student-run programming board offers events to the campus community that are entertaining, interactive, and educational. PAC ignites school spirit by hosting activities, concerts, carnivals, and off-campus excursions.

### MASON SPIRIT SQUAD

The Mason Spirit Squad is an energetic group of students dedicated to promoting all Student Involvement initiatives in creative and fun ways! Ask us about volunteering for Spirit Squad at any Student Involvement event!

### GEORGE MASON UNIVERSITY ESPORTS

GMU Esports offers Mason students the chance to get involved in both casual and competitive gaming. With four varsity level competitive games, students can try out to represent Mason in *Rocket League*, *Overwatch*, *League of Legends* or *Valorant*. *Super Smash Bros.* players can join other students in our weekly Smash tournaments held every Friday night. Just a casual gamer? Join us for community game nights, watch parties, trivia nights and many more opportunities to be a part of the GMU Esports community.

📍 The Hub, Suite 2300 📞 703-993-2909 🏠 [si.gmu.edu](http://si.gmu.edu)  
✉️ @MasonPatriots 📺 MasonInvolvement







## Leadership Education and Development (LEAD) Office

The Leadership Education and Development (LEAD) Office works collaboratively with students, faculty, and staff to provide leadership education, training, and development for students at all levels of leadership development. We believe that every student has the potential to be a leader, and we help students develop as effective, ethical leaders through a series of workshops, conferences, classes, speakers, dialogues, and retreats. Our programs provide opportunities to develop a strong sense of self, augment critical thinking and interpersonal skills, develop global and cultural competencies, and cultivate organizational skills for transition into the professional world.

We offer a variety of programs, opportunities for student engagement, academic courses, and comprehensive initiatives focused around leadership.

## LEADERSHIP PROGRAMS

### ENGAGE

- 1:1 Conversations across Difference
- Active Leaders Cohort
- Alumni Leadership Speaker Series
- Ethics and Leadership Course (INTS 404)
- Freedom and Learning Forum
- LeaderShape: Catalyst
- Leadership Certificate Series
- Leadership Mason Conference
- Leadership Summit
- President's Leadership Seminar
- Right, Wrong, or Different? Global Ethics Discussions
- Study Abroad (e.g., Spain: Leadership Across Difference)
- Workshops (We come to you!)

### INSPIRE

- Graduate Assistantship (paid position)
- K-12 School Partnerships
- Leadership Consultants (LCs) (paid position)
- Mason LIFE Partnership

### SERVE

- Community Service and Outreach
- Family Weekend Day of Service
- Homecoming Day of Service
- Mason Nation 9/11 Day of Service

📞 703-993-4186 🏠 [lead.gmu.edu](https://lead.gmu.edu) ✉ [lead@gmu.edu](mailto:lead@gmu.edu)

📘 [goleadmason](https://goleadmason.com)

✉ @LEADMason 📺 LEADgmu 🎧 @LEADMASON



## Student Media

**Student Media's mission is empowering students to exercise their First Amendment rights and creativity through creating works that inform, enrich, and entertain the Mason community.** Writer, editor, photographer, videographer, anchor, DJ, designer, peer reviewer, director, and producer are just a few of the roles students can explore when they get involved.

**With more than 10 unique publications and media groups that include Mason's official student newspaper (*Fourth Estate*), radio station (WGMU), and television network (Mason Cable Network), we offer a wide variety of opportunities to apply academic concepts beyond the classroom and build practical skills that can open up new career pathways.** We meet students where they are and offer hands-on training to help them find success and enhance their resume.

**We are always looking for talented students to join our dynamic team!** Become an audience member, attend an event, join a media group's staff, or submit your original works for publication consideration.

## HOW DO I GET INVOLVED?

Visit our office in the lower level of The Hub, Room 1201, or fill out our interest form online at [c2ms.info/osmapply](https://c2ms.info/osmapply).

## WHY STUDENT MEDIA?

- Be creative.
- Meet great people.
- Build skills to add to your resume.
- Get your original work published.
- Gain practical hands-on experience.
- Work in a professional and fun environment.

## 1-CREDIT COCURRICULAR COURSES

- COMM 145/345 Newspaper Workshop I and II
- COMM 148/348 Radio Workshop I and II
- COMM 347 Cable TV Programming and Marketing

*Each course can be repeated for credit up to three times!*

## PICK UP A PUBLICATION

Get your copy of our latest print publications at one of our literature racks around campus or visit our office in The Hub, Room 1201.

Student Media

📞 703-993-9745 ✉ [stumedia@gmu.edu](mailto:stumedia@gmu.edu)

🏠 [studentmedia.gmu.edu](https://studentmedia.gmu.edu) 📱 📧 📺 📷 @gmustudentmedia

## Mason Recreation

Mason Recreation inspires an inclusive atmosphere that fosters lifelong well-being for the university's diverse students and community through active experiences, education, and engagement.

We offer three state-of-the-art recreation facilities for the university and surrounding community: the Aquatic and Fitness Center, the Recreation and Athletic Complex (RAC), and Skyline Fitness Center. Membership is free for all full-time students. Part-time students may activate their membership at any of our three facilities for a small fee.

### AQUATICS

If you enjoy the water, the Aquatic and Fitness Center is the place for you. Relax in our recreation pool or swim a few laps in our Olympic-size competition pool. Fun activities to watch for are our Dive In Movies, Aqua Aerobics, Key Log Rolling, and Splash Night held during Welcome2Mason each fall. Those looking for instructional/certification courses will find lifeguard certification, swim lessons, and CPR/AED/First Aid offerings.

### FITNESS

Each of our facilities is fully equipped to support all of your fitness needs, including cardio equipment, free weights, squat racks, benches, and much more! Are group workouts more your style? We have more than 30 group fitness classes each week, including Zumba, yoga, Pilates, cycling, capoeira, tai chi, boot camp, HIIT, and more. All classes are perfect for people of all fitness levels. Do you have fitness goals? Let our certified personal trainers help you get to where you want to be. Remember, our friendly staff is always here to guide you on your fitness journey!

### INTRAMURAL SPORTS

Intramural Sports offers students the opportunity to compete in recreational and competitive sports leagues and special events on campus. We have the usual favorites like flag football, basketball, volleyball, and soccer, but don't forget about table tennis, e-sports, cricket, and kickball!

### BURNALONG

BurnAlong with Mason and Feed Your Flame! BurnAlong provides free, on-demand virtual health, wellness, and fitness resources to help you stay motivated and focused on empowering your well-being. Find out more at [fit.burnalong.com/gmu](https://fit.burnalong.com/gmu).



### CLUB SPORTS

Club Sports offers students looking for something more competitive a chance to compete and represent Mason on a local, regional, and national level. With 30+ clubs, there is something for everyone. Club teams are student-led organizations and provide a great opportunity for individuals who are looking for leadership and development opportunities. If we do not offer the club you are looking for, simply contact our office to begin the application process and start your own.

### OUTDOOR ADVENTURES

Enjoy the great outdoors by participating in trips conducted most weekends throughout the fall and spring semesters. Outdoor Adventures also offers a variety of equipment to rent if you wish to embark on your own trip. The Outdoor Adventures office is located in the Skyline Fitness Center, adjacent to the Southside dining hall.

### THE EDGE

The EDGE provides hands-on experiential learning programs that offer cutting-edge team development activities and workshops. This program features a challenge course, Alpine climbing tower, and a mobile program. If your club, class, or group is looking to develop and grow as leaders, book a program with the EDGE today!

### WELL-BEING

There is no time like the present to empower your well-being! We provide a variety of engaging well-being programs for Patriots, including our Now What? learning series, Leading through Reading book discussions, and Fun Fridays at the RAC. Our educational well-being resources include Voices of Well-Being, Let's Eat Healthy series, and our Monthly Awareness Topics.

📞 703-993-5323 🏠 [recreation.gmu.edu](https://recreation.gmu.edu)

📱📧📷📺 @GeorgeMasonRec



## Housing and Residence Life

Welcome, Patriots! This is an exciting time in your journey, and we are thrilled to be a part of it! Housing and Residence Life is home to more than 6,000 students. With so many students calling Mason home, you'll have abundant opportunities to connect with your peers and our diverse university community.

Every first-year first-time residential student is required to reside on campus and will have the opportunity to live in a Residential Learning Community (RLC). These communities consist of three different categories—academic, identity, and interest based—and are located in specific buildings and floors. Residential Learning Communities allow you to live and learn alongside other students who share a common passion, major, or identity in an environment tailored to that topic. Students living in our RLCs will have opportunities to engage with academic faculty and staff outside of the classroom in a variety of activities. Our RLCs help make a big campus feel smaller and can connect you to your peers as well as faculty and staff members who are invested in your success. On your housing application you can apply for your top RLC choice and you will be accepted based on your application, answers, and space availability.

Students who live on campus have convenient access to numerous dining options, Fenwick Library, multiple recreation facilities, a wealth of study spaces, and so much more! Our Housing and Residence Life staff are committed to ensuring you have a successful transition to Mason. From community events to one-on-one conversations, we are here to provide support and activities along the way. With opportunities and resources like these, we are confident Mason will feel like home in no time.

Students will be able to match with and select their roommates after the Residential Learning Community placement process in late May. Since the RLCs are on specific floors and buildings, students must be in the same RLC to live together. Our process will allow you to meet other students in your community through the Housing Portal to find a roommate to live with! Students who do not wish to live in an RLC can also match with roommates through the Housing Portal. Students should check their emails as well as

[housing.gmu.edu](https://housing.gmu.edu) throughout the summer for move-in days and times information.

Our residence halls open on Wednesday, August 21, 2024, for all incoming first-year students. All students will be assigned a specific move-in time. Move-in details will be posted on the Housing and Residence Life website beginning July 1. In addition to the housing website, be sure to check your Mason email and the Housing Portal throughout the summer for further instructions.

Students living on campus have the opportunity to join the Residence Hall Association (RHA) as a way to advocate for and create the experience they want in the residence halls. Students can serve as officers and as neighborhood representatives. Students can talk to their resident assistant for more information.

To help prepare you for the year ahead, be sure to mark these important dates on your calendar!

- First-Year Move-In: August 21–22, 2024
- Upper-Level Move-In: August 23–25, 2024
- Thanksgiving Break: November 27–December 1, 2024 (all residence halls remain open)
- Winter Break Closing: December 18, 2024, at 5 p.m.
- Spring 2025 Residents Return to Campus: January 17, 2025
- Spring Break 2025: March 10–16, 2025 (all residence halls remain open)
- Spring 2025 Move-Out: May 14, 2025, at 5 p.m.
- Residence Halls Close: May 14, 2025

We hope you are as excited to be at Mason as we are to have you join our community! Be a part of the conversation on our social media channels or visit our website for more information.

📞 703-993-2720

🏠 [housing.gmu.edu](https://housing.gmu.edu) ✉ [housing@gmu.edu](mailto:housing@gmu.edu)

✉️ 📷 📺 📱 @MasonHousing

# FREEDOM OF EXPRESSION AT GEORGE MASON UNIVERSITY

At George Mason University we include and embrace a multitude of people and ideas in everything we do and protect the freedom of all members of our community to seek truth and express their views. Freedom of expression in an intellectually and culturally diverse environment provides all members of our community the opportunity to learn, grow, and contribute to our shared mission to create a more just, free, and prosperous world. George Mason University is committed to protecting free speech and free expression on its campus and in its education programs.

Being exposed to competing perspectives is essential for questioning our assumptions, testing our beliefs, and refining our knowledge. Our goal as a community must be to create an environment where we can engage in difficult and challenging conversations with civility and mutual respect, where confronting opposing ideas and perspectives becomes an opportunity to learn from and with each other.

Our commitment to freedom of expression is not incompatible with our commitment to diversity and to nurturing a positive and collaborative environment where everyone can thrive. On the contrary, it is by achieving the latter that freedom of expression becomes a powerful tool for personal learning and growth. But our efforts to build a civil and respectful environment cannot be used as reasons to limit the rights of others to express views that we may consider misguided or even offensive. As articulated by a 2014 report from the University of Chicago, we must hold a fundamental commitment to “the principle that debate or deliberation may not be suppressed because the ideas put forth are thought by some or even by most members of the university community to be offensive, unwise, immoral, or wrongheaded.”

Mason facilities are intended primarily for the use of its students, faculty, and employees in their efforts to advance the educational mission of the university. No use shall be permitted that is unlawful, threatens the safety of the Mason community, or is inconsistent with the mission of the university. In maintaining a safe campus, in which its

students, faculty, and employees can advance the educational mission of Mason without disruption, the university may establish constitutionally permissible time, place, and manner restrictions on the use of its facilities and property (e.g., registration requirements, times when use is permitted, limitations on amplified sound). These can be found in University Policies 1103, 1109, 1140, and other applicable policies and procedures. These policies and procedures ensure that Mason can focus on its educational mission, provide a safe environment for learning, and preserve the aesthetics of its campus.

The campus community is encouraged to participate in all university-sponsored programs and activities. Members of the Mason community maintain the right to criticize and contest speech they disagree with, whether by members of the Mason community or outside speakers who are invited to the campus. But freedom of expression does not permit disrupting or preventing another person's ability to speak or hindering the ability of others to see or hear that speech. The First Amendment protects the right to peacefully protest, demonstrate, and speak in opposition to others' speech, as long as it does not impede the constitutionally protected speech of others.

All members of the George Mason University community enjoy the right to freedom of speech and expression. Individuals are encouraged to speak, write, listen, challenge, and demonstrate as a natural platform for intellectual engagement. This is the true spirit of freedom and learning.

If you would like additional information about Mason policies related to speech and expression, you can visit [gmu.edu/1stAmendment](https://gmu.edu/1stAmendment). If you believe your freedom of speech or expression has been disrupted, you may report an incident of disruption of constitutionally protected speech by selecting the “Submit a Report” button on that web page. You can also visit [campusclimate.gmu.edu](https://campusclimate.gmu.edu) for more information about speech, expression, and other campus climate topics at Mason.



# DIVERSITY AND INCLUSION AT MASON

## Contemporary Student Services

At Mason, Contemporary Students include adult learners, transfer students, student-parents and caregivers, off-campus students, military- and veteran-connected students, foster care alumni, and other post-traditional students. Contemporary Student Services (CSS) advocates, celebrates, educates, and serves. We offer resources, peer support, and social opportunities to specifically meet the needs of contemporary college students and those transitioning to off-campus living.

🏠 [contemporary.gmu.edu](http://contemporary.gmu.edu)

## CONTEMPORARY STUDENT LOUNGE

Stop by our Contemporary Student Lounge in room 1012 of The Hub. You will always find welcoming folks, free coffee and tea, opportunities to make new friends or simply relax and study, and our kid-friendly Kids Zone. Our Contemporary Student Peer Mentors also work out of the lounge.

Monday–Thursday, 10 a.m.–7 p.m.

Friday, 10 a.m.–2 p.m.

## OPPORTUNITIES FOR CONTEMPORARY STUDENTS

- Campus and community resources for parenting, pregnant, transfer, and all contemporary students
- Contemporary Student Advisory Board: Open to all contemporary students to share your experiences, provide leadership within the community, and amplify the voices of students
- University Studies (UNIV) course sections specifically for contemporary students: UNIV 100 is for off-campus students, UNIV 300 is for transfer students to support their transition to Mason, and BIS 301 is a course to support adult learners as they transition to Mason
- Peer mentors and professional staff to support self-advocacy and help with any questions about Mason life on and off campus
- Social opportunities geared toward specific student population identity groups

Signature events and programs include:

- Preamble Events: An opportunity to get to know campus and connect with fellow contemporary students
- Trunk or Treat: A service opportunity for all students and a fun day of fall festivities for student-parents, caregivers, and area families. Sign up to decorate a trunk or bring your junior Patriots!

- Monthly Community Meet-Ups: Monthly meet-ups for transfer students, adult learners, and student-parents and caregivers
- Contemporary Student Appreciation Week: A week of educational and fun programming
- Contemporary Student Graduation: A graduation ceremony that acknowledges and celebrates the accomplishments of contemporary students

## OFF-CAMPUS HOUSING

CSS supports students looking for off-campus housing by hosting an online housing locator at [och.gmu.edu](http://och.gmu.edu) that includes a roommate finder restricted to the Mason community. The site also includes resources like our Off-Campus Housing Handbook.

📍 The Hub, Room 1012, Contemporary Student Lounge

🏠 [contemporary.gmu.edu](http://contemporary.gmu.edu) @ [@mason\\_css](https://twitter.com/mason_css)

✉ [masoncss@gmu.edu](mailto:masoncss@gmu.edu)

## Office of International Programs and Services (OIPS)

Our mission is to educate, celebrate, and serve. We connect members of the Mason community to foster friendships, celebrate each other's cultures, explore global issues and themes, and promote learning beyond the classroom. Additionally, we provide immigration advising, endorse immigration documents, and recommend and approve immigration benefits for international students, faculty, and exchange visitors. For immigration questions and concerns, you can meet with OIPS advisors during walk-in hours or schedule an appointment.

OIPS-sponsored events and programs are primarily organized by students for students and offer excellent opportunities to enhance your understanding of the world through personal interaction. Signature events and programs include:

- **International Buddy Program:** Aims to build cross-cultural friendships between Mason's international and domestic students by fostering mutual appreciation for cultures different from their own through a variety of campus events and activities
- **International Café:** An opportunity offered multiple times a semester for students to showcase various countries and cultures



- **International Education Week (November):** A weeklong multicultural exchange with specific educational objectives
- **International Week (March/April):** A weeklong celebration of Mason's diverse and international cultures

📍 SUB I, Suite 4300 ✉️ oips@gmu.edu 🏠 oips.gmu.edu  
 📘 Mason International 📧 @OIPSMason 📷 @MasonOIPS

## CENTER FOR CULTURE, EQUITY, AND EMPOWERMENT

The Center for Culture, Equity, and Empowerment (CCEE) is an on-campus haven for students of color (Asian American and Pacific Islander, Black and African Diasporic, Hispanic/Latino/a/x, Native American and Indigenous, and Southwest Asian and North African) to be seen and valued and to obtain a sense of belonging and liberation at Mason and in the world. Whether you identify as a student of color or not you are encouraged to engage with CCEE to identify ways to engage in difficult dialogue and navigate cross-cultural environments.

CCEE educates, develops, and engages students regarding their various intersecting identities (e.g., race, gender, religion, sexual orientation). We provide intersectional support through heritage programs and advocacy across the university. We also create opportunities to explore self, others, and community through conversations, workshops, and cultural engagement.

📍 SUB I, Suite 2400  
 📞 703-993-2700 🏠 ccee.gmu.edu ✉️ ccee@gmu.edu  
 📘 @masonccee

## LGBTQ+ RESOURCES CENTER

The LGBTQ+ Resources Center cultivates the success and well-being of queer, trans, nonbinary, and questioning students, staff, and faculty. Our work is deeply collaborative and rooted in intersectional justice. We build identity-affirming programs, develop leaders, provide critical resources, and foster a culture of equity and allyship at Mason.

- LGBTQ+ Peer Mentoring Program
- LGBTQ+ Residential Learning Community
- Safe Zone+ Program

📍 SUB I, Room 2200  
 📞 703-993-2702 🏠 lgbtq.gmu.edu  
 📘 Mason LGBTQ+ Resources  
 📷 @gmulgbtq

## FIRST-GEN+ CENTER

The First-Gen+ Center supports all students who are historically underrepresented in higher education and their allies. It specifically centers college students who identify as first generation, who identify as undocumented, who have refugee status, and whose families have limited income.

Are you first-gen? Our department defines first-generation students as a college student whose parent(s) and/or legal guardians did not receive or complete a bachelor's degree in or outside of the United States. Even if you have an older sibling or cousins who attended college, you are still first-gen. We offer a variety of programs throughout the year:

- First-Gen Week (National First-Gen Day is November 8)
- First-Gen Pinning Ceremony for graduating students
- I AM FIRST Podcast
- First-Gen+ Resource Guide
- First-Gen Faculty and Staff List
- One-on-one meetings with full-time staff
- Student Transition Empowerment Program (STEP)
- UndocuAlly Training
- Every Campus a Refuge Training

📍 SUB I, Suite 2400 🏠 firstgen.gmu.edu  
 ✉️ firstgen@gmu.edu 📘 @masonfgpc

## WOMEN AND GENDER STUDIES

The Women and Gender Studies Center raises awareness of issues related to women, gender, race, and sexuality, and fosters an intersectional approach to the student experience at Mason. The center is a cocurricular program providing learning opportunities through programming, events, activism, and courses through a feminist lens.

The center is located in Room 240K of the Johnson Center and is open to all students to come study, rest, hang out, have lunch, or just to nap for a few minutes between classes.

Women and Gender Studies maintains a dual program of academics and University Life through signature events such as World AIDS Day, Sojourner Truth Lecture, and Women's History Month in collaboration with various campus departments.

📍 Johnson Center, Room 240K 🏠 wmst.gmu.edu

📘 MasonWGST 📧 @MasonWGST 📷 @mason\_wgst

# SUPPORT SERVICES

## Counseling and Psychological Services

George Mason University's Counseling and Psychological Services (CAPS) provides free and confidential services to Mason students. The range of services offered includes:

- Individual and group counseling
- Psychiatric services
- Outreach events
- Skills-based workshops
- Psychological referral services
- Peer educators
- Consultation with faculty, staff, parents, and friends

All students enrolled in classes at Mason are eligible for services. During the the initial check-in appointment, the counselor will speak with you briefly to obtain information on your current mental health needs and determine next steps for your care. Students are referred to services based on their concerns to help promote psychological health and academic success.

Students may use CAPS to address a variety of concerns, including managing anxiety, depression, grief, and/or anger; personal, family, and relationship concerns; traumatic experiences; difficulty with alcohol, other substances, or food; sexual identity; race/ethnicity, culture, and diversity; and attaining educational and academic goals.

Services are provided by a staff of professional clinical psychologists, counselors, social workers, doctoral-level trainees, and psychiatric providers. For students who need more intensive services, we offer referrals to community-based providers and facilitate successful connections with these resources.

In addition to working directly with students, CAPS provides consultation to faculty, staff, parents, and friends who may be concerned about another student. By speaking with an on-call clinician, individuals can gain information and support about how they might approach and address issues with the student of concern. Refer to the Student Support and Advocacy Center section in this guide (page 36) for information on how to make a referral for students of concern.

📍 SUB I, Suite 3129 📞 703-993-2380  
🏠 [caps.gmu.edu](https://caps.gmu.edu)

## Student Health Services

Student Health Services is staffed by dedicated doctors, nurse practitioners, and nurses who provide easily accessible and affordable health care to all enrolled students in a caring and confidential environment. We offer a wide variety of services to keep our Mason community healthy.

### SERVICES

- Treatment of illness and injury
- Health and wellness counseling
- Immunizations and flu shots
- COVID evaluation and testing
- Laboratory tests
- Sexually transmitted infection (STI) testing and treatment
- Help quitting smoking or tobacco
- Travel clinic
- Allergy clinic
- Screening for mental health concerns
- Nutrition counseling
- Physical health exams
- Basic gynecological care, pap tests
- Pregnancy testing and counseling
- Contraceptive education and prescriptions, emergency contraception

There is no charge to be seen by one of our health care providers. There are fees for lab tests, medications, immunizations, supplies, and some procedures.

Students do not need health insurance to be seen at Student Health Services.

Call to schedule an appointment. There are often same-day appointments available for students with acute care needs.

- 📍 Fairfax: SUB I, Room 2300 📞 703-993-2831
- 📍 Mason Square: Van Metre Hall, Room B102
- 📍 Science and Technology: Colgan Hall, Room 229

📞 After Hours Nurse Advice Line: 703-993-2831  
🏠 [shs.gmu.edu](https://shs.gmu.edu)

## TIMELYCARE

Patriots have free 24/7 access to TimelyCare, a high-quality, virtual mental health platform. You can access TimelyCare services 365 days a year—that means access during breaks, after hours, and any time you need support!

Free for Students  
Available 24/7, 365 Days a Year

To learn more, visit: [ulife.gmu.edu/timely-care](https://ulife.gmu.edu/timely-care).

## STUDENT HEALTH INSURANCE PLAN

George Mason University offers a student health insurance plan and a dental plan, which are available to eligible undergraduate and graduate students who would like to purchase health insurance. Students with a plan can purchase coverage for eligible dependents.

🏠 [shs.gmu.edu/insurance](https://shs.gmu.edu/insurance)

## TIPS FOR INCOMING STUDENTS

- Turn in your immunization records early to ensure you have met the requirements.
- If you have health insurance, check with your insurance provider about coverage in the Northern Virginia area. Keep your insurance card or a copy with you.
- Do you have a chronic medical condition? Talk with your doctor about how to care for yourself at Mason. Consider scheduling a new patient appointment with Student Health.
- Know your personal and family medical history and if you have any allergies. These are common questions if you seek health care.
- Bring your medications and prescriptions with you. Have a plan for any refills and understand what your medication is for.
- Pack a first-aid kit. A few items can ensure you are prepared for basic self-care.
- Under 18? Have your parent/guardian sign the minor consent on the Immunization Record Form.

## IMMUNIZATION REQUIREMENTS

All newly admitted students and re-admitted students must complete the Mason Immunization Record Form and submit the form to the Immunization Office before the deadline. Students can upload the form to the Patient Portal.

### Immunization Record Deadlines

Deadlines vary for fall and spring semesters. Check the website for dates.

Students must complete pages 1 and 2 and a health care provider must complete the remaining sections of the Immunization Record Form. If a student is not able to provide appropriate documentation, immunizations and/or titers are available for a fee.

Students can check their immunization status in the Patient Portal.

A late fee will be charged and a hold will be placed on the student's Patriot Web account if immunization records or documentation are incomplete. This may delay future class registration.

🏠 [shs.gmu.edu/immunizations](https://shs.gmu.edu/immunizations)





## Learning Services

Learning Services assists Mason students in achieving their academic goals. Many students find that learning and studying at Mason is different than what they were accustomed to in high school or in community college. The staff provides a variety of free services to empower students to help them study effectively, manage assignments, and prepare for tests.

### ACADEMIC COACHING

Peer Academic Coaches are available to meet with students to discuss their academic goals, develop study plans, and learn new study strategies. Coaches are trained and supervised by a Learning Specialist. Make an appointment online at [learningservices.gmu.edu](https://learningservices.gmu.edu).

### ACADEMIC SUCCESS WORKSHOPS

Workshops on a wide variety of academic strategies are offered each week throughout the academic year. Space is limited, so students are encouraged to register in advance. Topics include time management, procrastination, reading strategies, exam strategies, and improving concentration, to name a few.

### ONLINE MEDIA LIBRARY

Videos on adjusting to college, motivation, goal setting, and critical thinking are available online.

### TUTORING RESOURCES

A list of campus-based tutoring resources is available at [learningservices.gmu.edu/tutoring-resources2](https://learningservices.gmu.edu/tutoring-resources2).

📍 SUB I, Suite 3600 📞 703-993-2999  
🏠 [learningservices.gmu.edu](https://learningservices.gmu.edu)

## Disability Services

Disability Services will help to transform George Mason University into an inclusive and accessible university where programs, services, and environments are accessible by all people. We will do this by

- Promoting equitable access for students with disabilities in all activities within the university experience
- Fostering partnerships with students, faculty, and staff to create an accessible, diverse, and inclusive community
- Increasing inclusivity within the university community for individuals who identify with the disability community

Disability Services provides long- and short-term academic, nonacademic, housing, and meal plan accommodations for Mason students. To register with Disability Services, students must complete the following steps:

- Complete and submit the intake form.
- Submit any appropriate impairment, condition, or disability documentation. In the event that a student does not have documentation, they may contact Disability Services to discuss the next steps.
- Participate in an interactive initial meeting to discuss accommodations.

Contact Disability Services directly with questions or concerns.

📍 SUB I, Suite 2500  
📞 703-993-2474 📧 [ods@gmu.edu](mailto:ods@gmu.edu) 🏠 [ds.gmu.edu](https://ds.gmu.edu)

## Student Support and Advocacy Center

The Student Support and Advocacy Center (SSAC) is committed to providing an empowering environment for all Mason students to seek support services and to explore healthy life choices. We offer educational programming, one-on-one consultations, and resources in the areas of sexual and interpersonal violence, financial well-being, substance use, and collegiate recovery. We assist students encountering barriers to personal success.

SSAC provides the following services:

- Intervention with students encountering personal challenges that prevent them from achieving their academic and personal goals;
- Confidential support for students who have been affected by sexual and interpersonal violence (sexual assault, domestic or partner violence, sexual harassment, stalking, etc.);
- Education for students addressing their use of alcohol and other drugs;
- Campuswide training and education on bystander engagement, healthy relationships, financial well-being, and substance use;
- Operation of the Patriot Pantry and emergency meal vouchers supporting students who face food insecurity; and
- 24-Hour Sexual and Intimate Partner Violence Crisis Line (703-380-1434) for students in crisis seeking support related to sexual and interpersonal violence.

Students seeking to connect with a center staff member, and individuals referring students about whom they are concerned, should do so via SSAC's website at [ssac.gmu.edu](https://ssac.gmu.edu) by clicking the "Request Support and Make Referrals" tab.

📍 SUB I, Suite 3200 📞 703-993-3686 🏠 [ssac.gmu.edu](https://ssac.gmu.edu)

## NOTES

LIFE AT MASON

# STUDENT RIGHTS AND RESPONSIBILITY



## Code of Student Conduct

What is the Code of Student Conduct?

Do you know what is expected of a George Mason University Patriot? With independence comes responsibility.

The Office of Student Conduct hosts the Code of Student Conduct that outlines behavioral expectations for all students. Description of policies include:

- Living on campus
- Alcohol violations
- Drug policy violations
- Sexual misconduct and sexual harassment
- Interpersonal violence
- Possible sanctions and outcomes for violations

This is your chance to get involved! Read about the Community Adjudication Board, as well as the Residential Adjudication Board (Res Board), as an opportunity to get involved with helping and educating fellow Mason students by resolving student conduct cases.

📞 703-993-6209 🏠 [studentconduct.gmu.edu](https://studentconduct.gmu.edu)

## Honor Code

Our former Honor Code has been reworked into a statement of Academic Standards that all community members pledge to uphold. As members of the George Mason University community, we are committed to fostering an environment of trust, respect, and scholarly excellence. Our academic standards are the foundation of this commitment, guiding our behavior and interactions within this academic community. The practices for implementing these standards adapt to modern practices, disciplinary contexts, and technological

advancements. Our standards are embodied in our courses, policies, and scholarship, and are upheld in the following principles:

**Honesty:** Accurate information in all academic endeavors, including communications, assignments, and examinations.

**Acknowledgment:** Proper credit is provided for all contributions to one's work. This involves the use of accurate citations and references for any ideas, words, or materials created by others in the style appropriate to the discipline. It also includes acknowledging shared authorship in group projects, co-written pieces, and project reports.

**Uniqueness of Work:** All submitted work is the result of one's own effort and is original, free from plagiarism or self-plagiarism. This principle extends to written assignments, code, presentations, exams, and all other forms of academic work.

Violations of these standards—including but not limited to plagiarism, fabrication, and cheating—are taken seriously and will be addressed in accordance with university policies. The process for reporting, investigating, and adjudicating violations is outlined in the university's procedures. Consequences of violations may include academic sanctions, disciplinary actions, and other measures necessary to uphold the integrity of our academic community.

The principles outlined in these academic standards reflect our collective commitment to upholding the highest standards of honesty, acknowledgment, and uniqueness of work. By adhering to these principles, we ensure the continued excellence and integrity of George Mason University's academic community.

🏠 [academicstandards.gmu.edu](https://academicstandards.gmu.edu)



## Title IX

Title IX of the Education Amendments of 1972 prohibits discrimination on the basis of sex and/or gender under any education program or activity receiving federal financial aid. Sexual harassment, sexual assault, domestic violence, dating violence, stalking, and sexual exploitation are forms of sex discrimination.

George Mason University is committed to providing a learning, living, and working environment free from discrimination. Any sex or gender-based discrimination, including those identified as Prohibited Conduct listed in University Policy 1202, which includes but is not limited to sexual assault, sexual or gender-based harassment, stalking, interpersonal violence, and sexual exploitation, complicity, or retaliation committed by Mason students, staff, or faculty will not be tolerated. This applies to academic, educational, athletic, residential, and all other university operated and affiliated programs. Mason encourages individuals who believe they have been subjected to Prohibited Conduct under University Policy 1202 by a Mason student or employee to seek assistance and to report their concerns to the Title IX Office.

### When should I contact the Title IX Coordinator?

Any student, faculty member, staff member, or applicant who has concerns about sex/gender discrimination or sexual misconduct is encouraged to seek the assistance of the Title IX Coordinator.

Contact the Title IX Coordinator if you

- Seek resources or need help on how to handle a situation
- Wish to understand your options if you think you may have encountered sex/gender discrimination or sexual misconduct (sexual assault, sexual or gender-based harassment, stalking, interpersonal violence, sexual exploitation, complicity, or retaliation)
- Observe or learn of a situation that you feel may warrant a formal university investigation
- Seek guidance on possible informal remedies or administrative measures to de-escalate or alleviate a difficult situation
- Have questions about Mason's policies and procedures
- Wish to inquire about supportive measures as they relate to your academics, your job, your living arrangements, or your travel to school
- Want to learn about No Contact Orders

### CONFIDENTIAL RESOURCES

(not required to notify Title IX Office)  
Student Support and Advocacy Center  
Student Health Services  
Counseling and Psychological Services

### NONCONFIDENTIAL OR PRIVATE RESOURCES

Housing and Residence Life  
LGBTQ+ Resources Office  
Office of Student Conduct  
Office of the University Ombudsperson  
University Police and Public Safety

To file a Title IX Report, visit [diversity.gmu.edu](https://diversity.gmu.edu).

### MASON'S TITLE IX COORDINATOR

Thomas M. Bluestein, JD  
Office of Diversity, Equity, and Inclusion  
📍 Aquia Building, Suite 373  
📞 703-993-8730 ✉ [titleix@gmu.edu](mailto:titleix@gmu.edu)  
🏠 [Diversity.gmu.edu](https://diversity.gmu.edu)

## Patriots against Hazing

At Mason, we take pride in providing a safe and inclusive environment for our students, faculty, and staff. Hazing has no place in our community, and no one should be demeaned or exposed to harm to be involved in campus life. It is all our responsibility to keep our fellow Patriots safe and healthy. Let's all work together on hazing prevention to ensure hazing has no place at Mason.

Mason defines hazing as any action taken or situation created, recklessly or intentionally, to produce mental or physical discomfort, embarrassment, ridicule, or possibly cause mental or physical harm or injury to any person on or off the university's campuses, regardless of the participant's consent.

Per Virginia Code Section 23.1-822

(Adam's Law), Mason provides a report of past hazing misconduct involving student organizations. The information includes the name of the student organization, the dates (if known) of the hazing behavior, the date such behavior was reported to the university, the dates of investigation and when the organization was found responsible, and a description of the findings. Reports of hazing that did not result in a finding of responsibility are not included. Mason updates this information at least 10 calendar days prior to the start of each fall and spring semester and maintains the information for 10 years following the date of initial disclosure. For questions about this report, please contact the Office of Student Conduct at [OSC@gmu.edu](mailto:OSC@gmu.edu).



### AVAILABLE RESOURCES:

Patriots against Hazing Website:  
[si.gmu.edu/patriots-against-hazing](https://si.gmu.edu/patriots-against-hazing)

The website includes details on the following.

- Virginia Hazing Laws
- Mason's Hazing Policy
- Patriots against Hazing Workshops
- Hazing Prevention Resources
- Report Possible Hazing



## MEET THE PATRIOT LEADERS



**Aakriti Adhikari**  
she/her  
Kathmandu, Nepal  
*Finance*



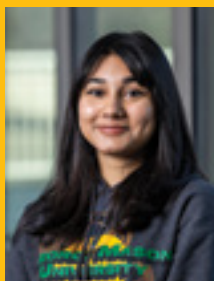
**Adila Aghayeva**  
she/her  
Baku, Azerbaijan  
*Government and  
International Politics*



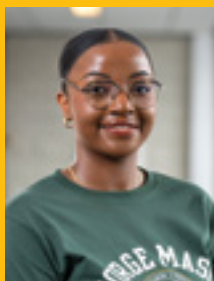
**Afor Tanwi**  
she/her  
Glen Allen, VA  
*Business, Management  
Information Systems  
Concentration*



**Alex Gomez**  
he/him  
Ashburn, VA  
*History*



**Batul Idris**  
she/her  
Fairfax, VA  
*Computer Science*



**Bene Bengheya**  
she/her  
Congo/Republic Democratic  
of the Congo  
*Accounting*



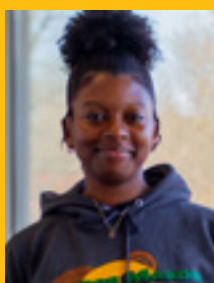
**Cece Keen**  
she/her  
Danville, VA  
*Psychology*



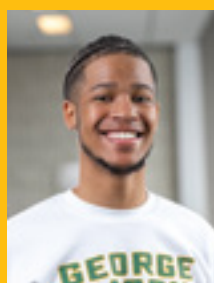
**Chim Okafor**  
she/her  
Nokesville, VA  
*Computer Science*



**Connor Monke**  
he/him  
Washington, D.C.  
*Psychology*



**Corinne Kelly**  
she/her  
Hinesville, GA  
*Music*



**Dae'Quon Shines**  
he/him  
Virginia Beach, VA  
*Theater*



**Deondra Corbin**  
she/her  
Stafford, VA  
*Criminology, Law and Society*



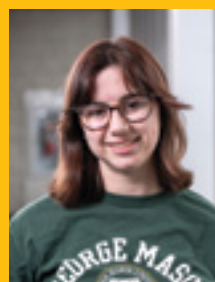
**Diya Patel**  
she/her  
Staunton, VA  
*Undeclared*



**Dominique Dargan**  
she/her  
Steelton, PA  
*Film and Video Studies*



**Emma Bosies**  
she/her  
Salisbury, MD  
*Forensic Science*



**Evelyn Krupicka**  
she/her  
Naperville, IL  
*Forensic Science*



**Faith Dixon**  
she/her  
Richmond, VA  
*Criminology, Law and Society*



**Gabby Nierva**  
she/her  
Fredericksburg, VA  
*Elementary Education*



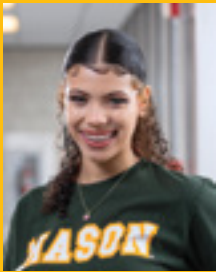
**Genesis Mitchell**  
she/her  
Baton Rouge, LA  
*Biology*



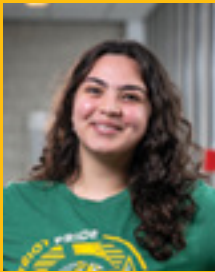
**Jack Pora**  
he/him  
Virginia  
*Mechanical Engineering*



Meet the Patriot Leaders (continued)



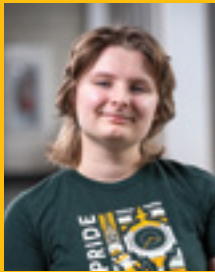
**Jade Ridout**  
she/her  
Washington, D.C.  
*Nursing*



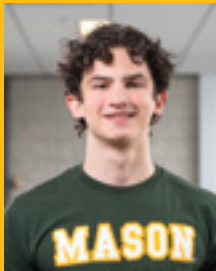
**Janna Tosson**  
she/her  
Fairfax, VA  
*Conflict Analysis and  
Resolution, Government  
and International Politics*



**Josias Montesinos**  
he/him  
Linden, VA  
*Music Education, Music  
Technology Concentration*



**Katie McKay**  
she/her/they/them  
Sterling, VA  
*Psychology*



**Luigi Bilibio**  
he/him  
Parana, Brasil  
*Finance*



**Mah Rukh**  
she/her  
Pakistan  
*Neuroscience*



**Makenzie Givens**  
she/her  
Woodbridge, VA  
*Information Technology*



**Muhsina Saieb**  
she/her  
Fairfax, VA  
*Computer Science*



**Nhi Le**  
she/her  
Hanoi, Vietnam  
*Business, Management  
Information Systems  
Concentration*



**Nicholas Cuevas**  
he/him  
McLean, VA  
*Business, Management  
Concentration*



**Pavan Mummadi**  
he/him  
Chantilly, VA  
*CEC Undeclared*



**Pori Sarvepalli**  
she/her  
Fairfax, VA  
*Pre-Nursing*



**Rebecca Brannon**  
she/her  
Newport News, VA  
*Global Affairs*



**Rylee Back**  
she/her  
Hicksville, NY  
*History*



**Sam Morris**  
they/he  
Bristow, VA  
*Communication, Political  
Communication Concentration*



**Samriddhi Subedi**  
she/her/they  
Kathmandu, Nepal  
*Psychology*



**Seth Whipple**  
he/him  
Virginia Beach, VA  
*Global Affairs*



**Tram Nguyen**  
she/her  
Springfield, VA;  
Phan Thiet, Vietnam  
*Computer Science*

## STUDENT COORDINATORS



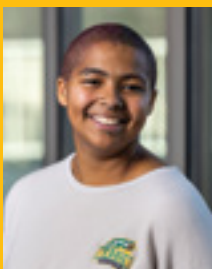
**Cara Williams**  
she/her  
Fredericksburg, VA  
*Business, Marketing  
Concentration*



**Grace Foley**  
she/her  
Leesburg, VA  
*Social Work*



**Lyla Hall**  
she/her  
Lancaster, PA  
*Criminology, Law and Society*



**Rae Mitchell**  
they/she  
Fredericksburg, VA  
*Criminology, Law and Society*



**Savannah Mitchell**  
she/her  
Front Royal, VA  
*Psychology*

Patriot Leader applications open in the fall! Visit  
**[greenpolo.gmu.edu](https://greenpolo.gmu.edu)** for more information!



# PLANNING A VISIT TO MASON?

Mason families can receive discounted hotel rates by staying at one of our partner properties with Marriott. Hotel discounts are available for families during signature university events such as Orientation, Family Weekend, Move-In Day, and Commencement.

Visit [masonfamily.gmu.edu/where-to-stay](https://masonfamily.gmu.edu/where-to-stay) to view discounted rates and make your reservations for upcoming events. For individual reservations outside of these special events, please visit [Marriott.com](https://Marriott.com).



University Life  
**NEW STUDENT AND  
FAMILY PROGRAMS**  
George Mason University®





**need to find an on-campus  
or part-time job?**

**LET HANDSHAKE DO  
THE WORK FOR YOU**



University Career Services

**handshake.gmu.edu**



**log in to your  
account now!**



703-993-2370



CAREERS.GMU.EDU



SUB I, 3400



# WELL-BEING AT MASON

At Mason, we define well-being as building a life of **vitality, purpose, resilience, and engagement**. We offer a variety of resources to help you thrive as a student. Learn more at Patriots Thriving Together [thrivingtogether.gmu.edu](https://thrivingtogether.gmu.edu) and the Center for the Advancement of Well-Being [wellbeing.gmu.edu](https://wellbeing.gmu.edu).

## Follow us on social media

📷 @CWB\_Mason

📘 @CWBGMU

🌐 [linkedin.com/school/masoncwb](https://www.linkedin.com/school/masoncwb)

✉ @CWB\_Mason

**PATRIOTS**  
*thriving*  
**TOGETHER**

## Activate Your Vitality

Use your free student access to explore a wide variety of on-demand fitness classes through BurnAlong. Energize yourself by participating in a Sophrology workshop to help you manage stress and activate vital, internal energy.

## Identify Your Purpose

Discover meaning and purpose by learning your talents and your natural patterns of thinking, feeling, and behaving with CliftonStrengths. Dive deeply into well-being and explore meaning and purpose with a residential learning community.

## Deepen Your Resilience

Investigate your resilience and deepen your skill set by earning your Resilience Badge through our self-paced online program or our Building Resilience course. Develop stress management skills to strengthen your resilience through Koru Mindfulness.

## Broaden Your Engagement

Engage with our kind community by exploring Mason Chooses Kindness and participating in Pats for Patriots. Connect with peers and make new friends while learning about the diversity of Mason's student body in a ProjectConnect group.



Be part of creating and sustaining a kindness revolution at Mason.

# inspire Simple Kindness

*Adapted from goodnet.org*

## On the Street



- Smile or say "hi" to passersby on campus.
- If you drive a car, let someone in your lane who is trying to get in. Earn bonus points by giving someone else a coveted parking spot.
- Hold the door open for someone else.



## Online



- Give someone a compliment. Bonus points if it's a stranger!
- Spread your social media likes generously.
- Post positive things to brighten someone's day.



## In Class or At Work



- Bring someone a cup of coffee or another beverage without being asked.
- Write an encouraging note and leave it on someone's desk.
- Reach out to someone who may be struggling in your class and offer to help.



## At Home or In Your Residence Hall



- Make dinner for your household (or order takeout).
- Do a chore for someone else (clean the bathroom, vacuum, tidy the kitchen).
- Write a letter to your roommate thanking them for putting up with you.
- Call a family member to reconnect.



Get more ideas at [kindness.gmu.edu](http://kindness.gmu.edu)



# LIBRARIES

George Mason University Libraries provide resources and services at four locations and online to help you with all your research needs. Fenwick Library houses most of Mason Libraries' research collections, services, and programs in new dynamic spaces. Gateway Library in the Johnson Center provides a supportive environment for undergraduate learning and research. Mason Square Library supports the Schar School of Policy and Government, the Jimmy and Rosalynn Carter School for Peace and Conflict Resolution, and other graduate and professional programs. Mercer Library supports the undergraduate, graduate, and special programs offered on the Science and Technology Campus in Manassas.

## Ace Your Research Project in Three Easy Steps

### STEP ONE: GET HELP

- **Ask a Librarian ([library.gmu.edu/ask](http://library.gmu.edu/ask))**  
IM, email, or schedule a visit with a subject librarian for one-on-one research help.
- **Tutorials ([library.gmu.edu/tutorials](http://library.gmu.edu/tutorials))**  
Quick and easy tutorials on everything to get you research-ready, from "How to Read a Call Number" to "Anatomy of a Research Paper."
- **Workshops ([library.gmu.edu/workshops](http://library.gmu.edu/workshops))**  
Free hands-on workshops on current research resources, strategies, and specialized software.
- **Subject Guides ([infoguides.gmu.edu](http://infoguides.gmu.edu))**  
Subject- and discipline-specific resources curated by experts are at your fingertips!

### STEP TWO: FIND YOUR SOURCES (AND SAVE MONEY!)

- **Books, Journals, and News**  
Use your Mason username and password to log in, locate, and use more than 800 research databases filled with journal articles, images, data, media, and more.

- **TextSelect ([library.gmu.edu/textselect](http://library.gmu.edu/textselect))**  
Check out required textbooks for required courses and save money!
- **Skill Development ([library.gmu.edu/use/tech/rosetta](http://library.gmu.edu/use/tech/rosetta))**  
Unlimited 24/7 access to Rosetta Stone language software and LinkedIn Learning online training. Learn business skills, photography, web design and development, animation, and 30 different languages for free!
- **InterLibrary Loan ([library.gmu.edu/use/ill](http://library.gmu.edu/use/ill))**  
Can't find what you need at Mason? You can request books, media, and articles from other libraries around the world.

### STEP THREE: REFINE AND PUBLISH

- **Scholarly Productions @ the Research Commons ([library.gmu.edu/sparc](http://library.gmu.edu/sparc))**  
Get help producing your research projects! SP@RC offers help on document design, poster design, citation software, presentations, and author rights.
- **Mason Libraries Group Study Rooms ([library.gmu.edu/use/study-rooms](http://library.gmu.edu/use/study-rooms))**  
Fenwick Library provides study rooms that can be scheduled up to 2 weeks in advance through the room reservation system.

🏠 [library.gmu.edu](http://library.gmu.edu)





## OFFICE OF STUDENT CREATIVE ACTIVITIES AND RESEARCH (OSCAR)

Do you want to assist a professor with their research while getting paid or earning credit?

Do you have a particular topic you would like to investigate?

Do you have an idea for a musical composition, dance production, theater performance piece, or any other creative work that you would like to create?

Do you want to travel to conferences to present your project?

The Office of Student Creative Activities and Research can help you do all of that!

We support undergraduates of all majors in the scholarly and creative endeavors through our work-study research assistantships, Undergraduate Research Scholars Program, and Undergraduate Student Travel Fund. Student scholarship is an integral part of your undergraduate experience and can open the door to many opportunities down the road, so take advantage of this valuable resource.

OSCAR is part of the Mason Impact initiative.

📍 Johnson Center, Room 228 📞 703-993-3794

✉ [oscar@gmu.edu](mailto:oscar@gmu.edu) 🏠 [oscar.gmu.edu](http://oscar.gmu.edu)



» [oscar.gmu.edu](http://oscar.gmu.edu) «

# GLOBAL EDUCATION OFFICE— STUDY ABROAD

The Global Education Office (GEO) facilitates international learning opportunities for Mason faculty and students through a diverse array of study-abroad programs that are accessible and engage students in meaningful and life-changing experiences.

## Benefits of Studying Abroad

Studying abroad is a great resume-builder and it sets you apart from those job seekers who have not gained any firsthand international perspective. You can enhance your Mason experience and benefit from studying abroad in various ways:

- Gain proficiency in a foreign language.
- Adapt to new situations and apply them to “old” habits.
- Develop an understanding for different cultures.
- Learn how to manage ambiguity.
- Grow personally, professionally, and academically.

## Mason-Led Programs

Experience the Mason classroom abroad through a wide range of programs led by Mason faculty. Programs are offered during winter break, summer, spring, and fall, and are open to all.

## Semester and Summer School Abroad

Mason works with dozens of partner schools worldwide to provide quality study-abroad experiences at prestigious host institutions around the globe during the semester, academic year, calendar year, and summer. Students gain invaluable experience through full immersion at the host institution to develop cross-cultural and interpersonal skills.

## Global Internships

Students gain experience and earn academic credit while interning at an international company or organization. Virtual, hybrid, and travel internships are available year-round, including part-time and full-time options for all majors and most career fields. First-year students are eligible to participate in their first spring or summer terms.

## Freshman Global Gateway

Students can participate in Mason’s first-year study-abroad program. Gateway destinations are situated in exciting international cities. Students spend their fall semester at Mason and spring semester on site, pursuing coursework in their major and Mason Core. Interested students must join before the fall semester.



## Featured Scholarships

### GEO Diversifying Study Abroad Scholarship

- \$400 to \$1,500 per award for a GEO-sponsored program

### GEO Global Perspectives Scholarship

- \$250 to \$1,500 per award for a GEO winter or summer break experience

### GEO Donor: Jacquemin Family Foundation Education Abroad Scholarship

- \$1,000 per award for first-time study-abroad applicants

### GEO Donor: Earnest and Florrie J. Walker Education Abroad Scholarship

- \$400 to \$1,000 per award for students majoring or minoring in African and African American Studies

### Build-Your-Own Internship Grant

- \$250 to \$1,000 guaranteed award based on number of credits

### Featured Exchange Program Grant

- \$800 to \$1,200 guaranteed award based on location

Scholarships are intended to help defray the costs associated with studying abroad. Award amounts are based on need and subject to availability of funds.

## How to Apply

Visit [studyabroad.gmu.edu](https://studyabroad.gmu.edu) for comprehensive listings and applications. Log in with your Mason NetID, create a personal profile, and apply.

📍 Johnson Center, Room 235 📞 703-993-2154

✉ [goabroad@gmu.edu](mailto:goabroad@gmu.edu) 🏠 [studyabroad.gmu.edu](https://studyabroad.gmu.edu)





**FOLLOW** your instincts  
**EXPLORE** your potential  
**SHAPE** your future

## Start Your Conservation Career Now!

The Smithsonian-Mason School of Conservation (SMSC) offers three compelling interdisciplinary conservation-based semester programs at the 3,200-acre Smithsonian Conservation Biology Institute in Front Royal, Virginia. SMSC students receive instruction from world-class Smithsonian researchers and Mason faculty, and gain incomparable hands-on conservation experience extending beyond classroom walls.

### Our three residential programs are open to students in all academic majors.

#### **Conservation, Biodiversity, and Society (fall or spring)**

Explore the ways that science, management, and policy address current conservation issues in and out of the field.

#### **Endangered Species Conservation (spring only)**

Learn to evaluate the vulnerabilities of small populations and develop successful conservation actions to save them from extinction.

#### **Wildlife Ecology and Conservation (fall only)**

Apply cutting-edge field techniques to survey species in the wild and investigate ecological patterns and processes from the local to global scale.

### Benefits to Mason students include

- the ability to apply financial aid and scholarships toward program costs;
- the opportunity to learn from conservation experts and interact with peers from diverse backgrounds;
- participation in an independent, one-on-one practicum and/or intensive research experience with Smithsonian scientists, researchers, animal keepers, or administrators, either on or off site;
- gaining valuable real-life job skills using cutting-edge technology to perform exciting hands-on fieldwork; and
- earning Mason credits that seamlessly fit within many academic majors, and satisfy requirements for the conservation studies minor.



Smithsonian

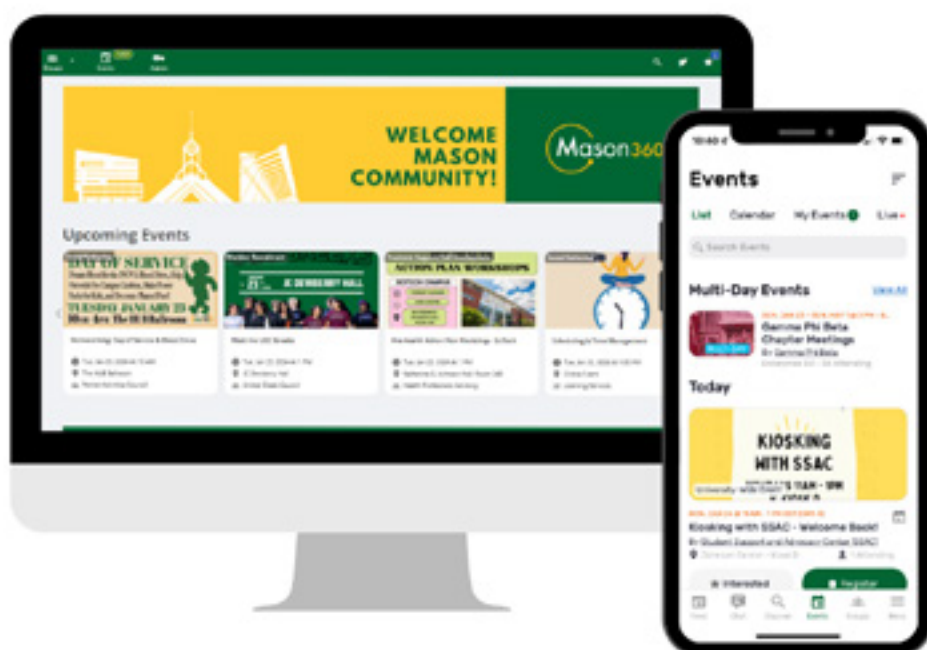


Smithsonian-Mason School of Conservation

**SMconservation.gmu.edu**

## GET INVOLVED, GET CONNECTED USING MASON360

Elevating Student Experiences Through Seamless Group Management and Unforgettable Events!



**Your dedicated platform to:**



Join Groups



Discover Service Opportunities



Register for Events & More

Visit [mason360.gmu.edu](https://mason360.gmu.edu) or download on the App Store and Google Play

# FEED YOUR FLAME!



## Burnalong at Mason

- Include your Friends and Family on Burnalong with sub-accounts to take live classes together
- Perfect for quick solo workouts or cheer and encourage your friends by inviting them to a private group workout where you can see and hear each other in real time.

## THE BURNALONG SOLUTION



- 1 Choice and diversity**  
Discover new wellness classes and instructors, plus personalized wellness programs, across 45+ categories.
- 2 Social connection**  
Get motivation from friends and family members you invite to join in live private group classes.
- 3 Personalization**  
Receive AI-powered guidance plus access anytime, anywhere – via phones, tablets, computers, & smart TVs.

## 45+ CATEGORIES

Spanning physical, mental, and financial wellness



📄 Activate your free account by visiting [join.burnalong.com/gmu](https://join.burnalong.com/gmu)





ZKSO DOHUK SUKAMANTAH URMIA  
ERBNL PRRI NEXMANSHAH ROBANI



# UNIVERSITY SERVICES





# MASON STUDENT SERVICES CENTER

The Mason Student Services Center is the first stop and the central resource for students seeking information and solutions related to registration, enrollment, financial aid, billing, academic records, and other student support services. The center assists new and continuing students at all points in their academic career, in one convenient location, thus eliminating the need to visit multiple offices on campus.

## LOCATION

The Mason Student Services Center (MSSC) provides in-person services on the lower level of SUB I on the Fairfax Campus and on the first floor of Van Metre Hall at Mason Square in Arlington. Upon arrival, students should proceed to an available kiosk station and check in online. After checking in, students will be greeted by a center representative who can answer both general and specific questions, provide assistance with navigating university resources, and provide referrals to specialists when necessary.

Walk-in services are available Monday through Friday, 9 a.m. to 5 p.m., on the Fairfax Campus and Tuesday through Thursday, 2:30 to 6:30 p.m., at Mason Square.

Visit the MSSC Community at [knowledge.mssc.gmu.edu](https://knowledge.mssc.gmu.edu) to find answers on topics like admissions, billing and payments, financial aid, registration, and more.

Other virtual services are available at [mssc.gmu.edu](https://mssc.gmu.edu) and via phone at 703-993-2000.





# STUDENT ACCOUNTS

The mission of the Student Accounts Office is to provide excellent service for our students, staff, and faculty, while maintaining internal controls that ensure financial transactions are accurately processed and proper records are maintained.

Our website, [studentaccounts.gmu.edu](http://studentaccounts.gmu.edu) provides additional information and guides on the following topics:

## Communication Policy

The Student Accounts Office communicates with students via their Mason email address. Students are required to activate their Mason email account and check it regularly.

## Electronic Billing

We bill tuition and fees electronically through the Bill and Payment System. Paper invoices are not mailed. Semester ebills are sent electronically to students and authorized users. The ebill is a snapshot of the account at the time of invoicing; real-time account charges and balances may be viewed at any time via the My Account tab in the Bill and Payment System.

## Authorized Users

For ease in submitting payments and staying up to date on financial information, students should set up their parents as authorized users in the Bill and Payment System. Authorized users will receive ebill notices and be able to access student accounts but are not able to view academic information.

## Semester Payment Plans

Payment plans are available online through the Bill and Payment System for students who need to budget their accounts. Please note there is no convenience fee for electronic check payments. All payment plans require a \$30 contract fee, which is nonrefundable.

## Late Payment Fee

A late payment fee of 10%, up to a maximum of \$125, may be charged to your account if your balance remains unpaid by the due date. You will be sent a message at your Mason email address giving you the opportunity to avoid a late fee by paying your balance. Failure to receive a reminder e-bill confirming your charges does not waive the requirement to pay on time.

## Collections

Accounts that remain unpaid at the end of each semester may be referred to a collection agency, credit bureaus, the Virginia Department of Taxation, and the Office of the Virginia Attorney General and may be subject to a collection fee.

## Registration Policies and Class Drop Deadlines

Classes will not be canceled for nonpayment or nonattendance. Students are responsible for confirming their withdrawal from any classes by the published deadlines. Approved late schedule adjustments after the deadline to add classes will incur additional fees of up to \$125. Please visit [studentaccounts.gmu.edu](http://studentaccounts.gmu.edu) for penalty deadlines.

## Tuition Insurance

We offer tuition insurance through GradGuard, which helps students and families overcome the financial losses that may result from events that force students to withdraw from the semester due to a covered medical reason. This coverage strengthens and broadens the scope of our existing refund policy by ensuring reimbursement for tuition, housing, and other payments if a student withdraws for any covered medical reason at any time during the semester. The deadline to purchase each term is up until the last day to add classes for the full semester.

## Direct Deposit

We encourage students to enroll in direct deposit to receive refunds electronically.

## Financial Good Standing

Financial good standing and a university record clear of holds are required for students to receive services. Services, including, but not limited to, transcript issuance, diploma release, class registration (add, drop, withdrawal, and so forth), and/or housing and meal plans will not be provided to students with a financial balance due or a hold of any kind on their record.

## Third-Party Billing

Third-party billing requirements and procedures are available at [studentaccounts.gmu.edu/third-party-billing-office](http://studentaccounts.gmu.edu/third-party-billing-office).

# STUDENT FINANCIAL AID

The mission of the Office of Student Financial Aid is to help make it financially possible for all admitted applicants to attend George Mason University. The office provides financial aid services to assist prospective and current students and their families. During the 2024–25 academic year, students will receive more than \$300 million in some form of financial assistance (grants, scholarships, work-study, and loans). An array of federal, state, and institutional financial aid programs helped students at all economic levels pay for their college education.

## Types of Financial Aid

### FEDERAL GRANTS (Do not need to be repaid.)

**Federal Pell Grant:** These need-based grants for low-income undergraduate students provide access to postsecondary education. Grant amounts are dependent on the student's Free Application for Federal Student Aid (FAFSA) results, cost of attendance, and enrollment status.

**Federal Supplemental Educational Opportunity Grant (FSEOG):** This grant is for undergraduate students with exceptional financial need.

### STATE GRANTS (Do not need to be repaid.)

**Mason Out-of-State Grant:** The purpose of the grant is to provide assistance to financially needy undergraduate out-of-state residents.

**Virginia Guaranteed Assistance Program (VGAP):** The purpose of the grant is to provide financially needy students who graduated from a Virginia high school with an incentive to attend college.

**Virginia Commonwealth Award:** This grant provides assistance to financially needy undergraduate Virginia residents.

### SCHOLARSHIPS (Do not need to be repaid.)

There are many different resources for students to use when searching for scholarship opportunities. Mason's Office of Student Financial Aid posts a list of scholarships offered to students by George Mason University (referred to as "internal" scholarships) and a list of outside or external scholarships offered by a variety of external sources (agencies, companies, private donors, etc.) for undergraduate and graduate students as the scholarships become available.

### FEDERAL WORK-STUDY (FWS)

George Mason University offers Federal Work-Study for eligible students to help pay for college expenses. This program allows students to work in a variety of part-time positions while building their resumes, time management skills, and job abilities.

### LOANS

Various types of loans are available to assist in financing a student's education. After a student completes and submits a FAFSA, based on the student's eligibility, the Office of Student Financial Aid can offer Federal Direct Subsidized and/or Unsubsidized Loans.

**Finances Should *Not* Be a Barrier to Investing in Your Future.**





#### FEDERAL DIRECT LOANS (UNDERGRADUATE STUDENTS)

##### DEPENDENT STUDENTS

YEAR	SUBSIDIZED	ADD'L UNSUBSIDIZED	TOTAL
Freshman	\$3,500	\$2,000	\$5,500
Sophomore	\$4,500	\$2,000	\$6,500
Junior	\$5,500	\$2,000	\$7,500
Senior	\$5,500	\$2,000	\$7,500

##### INDEPENDENT STUDENTS

YEAR	SUBSIDIZED	ADD'L UNSUBSIDIZED	TOTAL
Freshman	\$3,500	\$6,000	\$9,500
Sophomore	\$4,500	\$6,000	\$10,500
Junior	\$5,500	\$7,000	\$12,500
Senior	\$5,500	\$7,000	\$12,500

#### FEDERAL DIRECT LOANS (GRADUATE STUDENTS)

YEAR	ADD'L UNSUBSIDIZED	TOTAL
Graduate	\$20,500	\$20,500

#### IMPORTANT DATES TO REMEMBER

- October 1** FAFSA application becomes available online at [FAFSA.gov](https://fafsa.gov)
- March 1** FAFSA Filing Priority Deadline (to be considered for state grant eligibility)
- March 15** Deadline for submission of requested verification documents (to be considered for state grant eligibility)

📍 SUB I

☎ 703-993-2000, 703-993-2350 (fax)

✉ [finaid@gmu.edu](mailto:finaid@gmu.edu)

🏠 [financialaid.gmu.edu](https://financialaid.gmu.edu)

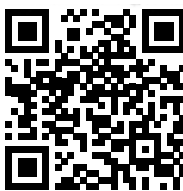


# INFORMATION TECHNOLOGY SERVICES

🏠 [its.gmu.edu](https://its.gmu.edu) 📞 703-993-8870  
✉ [support@gmu.edu](mailto:support@gmu.edu)

Check out our “Getting Started for Students” guide at [its.gmu.edu/get-started](https://its.gmu.edu/get-started).

Don't forget to download the Mobile Mason app for Apple and Android devices.



Getting Started Guide

## Help and Support Resources

### ITS SUPPORT CENTER

The Information Technology Services (ITS) Support Center, located in Innovation Hall, Room 226, serves as the central point of contact for requesting IT support and information.

### TWO-FACTOR AUTHENTICATION

Mason uses Duo Security to deliver two-factor authentication (2FA) when students access certain websites and applications. This second layer of protection makes personal information less vulnerable.

🏠 [2fa.gmu.edu](https://2fa.gmu.edu)

## Network and Telecommunications

### STUDENT EMAIL

Office 365 email is the official email for students. Directions for logging in for the first time are available at [its.gmu.edu/get-started](https://its.gmu.edu/get-started).

### WI-FI NETWORK

Wi-Fi network access is provided in all academic, administrative, residential, recreational, and dining spaces across the university. For the best Wi-Fi experience, connect to the eduroam network or ResNet when in residence halls.

🏠 [its.gmu.edu/service/residence-hall-network](https://its.gmu.edu/service/residence-hall-network)

🏠 [its.gmu.edu/service/wireless-network](https://its.gmu.edu/service/wireless-network)

### WIRED NETWORK

Wired network access is provided in all classrooms, residence halls, and public spaces.

🏠 [its.gmu.edu/service/network-access](https://its.gmu.edu/service/network-access)

### GUEST NETWORK

Guests of students may self-register for internet access over Mason's Wi-Fi networks.

🏠 [its.gmu.edu/guestwifi](https://its.gmu.edu/guestwifi)



timelycare | 

# Virtual Care From Anywhere

Get On-Demand, High Quality  
Mental Health Care From Your Phone  
or Desktop, 24/7 with **TimelyCare**.

It's for Students.  
**FOR FREE.**

To learn more, visit  
[Ulife.gmu.edu/timely-care/](https://Ulife.gmu.edu/timely-care/).



SCAN ME

@timelycare @timelycare @timely\_care



## Learning and Technology Resources

### VIRTUAL LAB

The Virtual Lab provides remote access to academic software to support online coursework.

### LINKEDIN LEARNING

Mason has partnered with LinkedIn Learning to provide free, unlimited online training. The online subscription library offers students 24/7 access to thousands of videos on a broad range of subjects.

🏠 [lil.gmu.edu](https://lil.gmu.edu)

### MICROSOFT 365 APPS FOR ENTERPRISE

Mason students can download and install the latest version of Microsoft 365 applications on up to five devices.

### MYMASON PORTAL

MyMason provides access to Blackboard and puts instructional technology resources in one convenient location.

🏠 [mymason.gmu.edu](https://mymason.gmu.edu)

- **Blackboard** provides a secure login system and tools to facilitate in-person, hybrid, and online courses.
- **Class Collaborate** is an interactive web conferencing and virtual classroom environment designed for real-time collaboration.
- **Kaltura My Media** allows faculty and students to create, host, and share video and audio inside the Blackboard App.
- **SafeAssign** is a plagiarism prevention service available to students through Blackboard.

### MASON IS MOVING TO CANVAS

**Canvas** by Instructure has been selected as Mason's new learning management system (LMS) and will eventually replace Blackboard. For more information, visit [lms.gmu.edu](https://lms.gmu.edu).

### ONEDRIVE FOR BUSINESS

OneDrive uses Office 365 to store files in the cloud making it easy to access your files and collaborate from anywhere and from multiple devices.

### MICROSOFT TEAMS

Microsoft Teams is an enterprise-wide collaboration suite that lives within Mason's Office 365 environment and provides chat, audio calling, video calling, screen share, and more.

### ZOOM

Zoom, [gmuzoom.us](https://gmuzoom.us), is a cloud-based web conferencing tool for video and audio conferencing, collaboration, chat, and webinars.

## Technology Spaces

### COLLABORATIVE LEARNING HUB (CLUB)

The walk-in lab features Windows and Mac workstations, a walk-up help bar, sound space, 3D printers, and collaborative spaces that include digital imaging, video-editing, web development, and other software.

📍 **Fairfax:** Johnson Center, Room 311

### COMPUTER LABS

📍 **Fairfax:** Innovation Hall, Room 301, and Johnson Center, Room 342

📍 **Mason Square:** Van Metre Hall, Room 211

📍 **Science and Technology:** Katherine G. Johnson Hall, Room 250

### STUDENT TECHNOLOGY ASSISTANCE AND RESOURCE LAB (STAR)

The state-of-the-art multimedia computer and equipment checkout facility provides students the space and resources to complete creative projects.

📍 **Fairfax:** Johnson Center, Room 229



ORDER FROM A ROBOT.

STAY ENTERTAINED.

PRINT HOMEWORK.

SEND PACKAGES.

RENT A LOCKER.

RECEIVE MAIL.

SHOP LOCAL.

RIDE & DRIVE.

PLAY GAMES.

BANK EASY.

EAT WELL.

***AMPLIFY YOUR  
CAMPUS EXPERIENCE***





## Explore Patriot Perks

Patriot Perks is a program that aims to create, increase, and enhance engagement between the Mason community and local businesses in the Northern Virginia area. More than 175 businesses offer exclusive discounts to Mason students, faculty, staff, and alumni. Find discounts at [patriotperks.gmu.edu](https://patriotperks.gmu.edu) or scan the QR code.



## Wells Fargo Debit Card

George Mason University and Wells Fargo have teamed up to offer you banking convenience with the Mason affinity debit card, exclusively for Patriots. Enjoy no-fee cash access at Wells Fargo ATMs on campus. Enroll today at [obs.gmu.edu/banking](https://obs.gmu.edu/banking) or scan the QR code.



## Connect with Us

Get direct access to information, events, and deals by subscribing to our newsletter and following us on social media. You will receive campus retail content related to services such as dining, parking, Patriot Perks, and giveaways! Connect with us at [aso.gmu.edu/link-in-bio](https://aso.gmu.edu/link-in-bio) or scan the QR code.



shopMason, the marketing brand of Auxiliary Services and Operations, facilitates community building and a high-quality campus life for students, faculty, and staff through goods and services. Our units include Mason Dining, Print and Mail, Parking and Transportation, Mason Card, Student Centers, and more. Amplify your campus experience!



# PARKING AND TRANSPORTATION

Mason offers an array of parking, transit, and transportation choices to students, faculty, and staff. We encourage you to have more than one way to get to campus in order to reduce the number of times you drive alone.

Below is a brief overview of your options. For more details, visit our website at [transportation.gmu.edu](https://transportation.gmu.edu).

We are happy to assist you with any questions. Contact us at [transpo@gmu.edu](mailto:transpo@gmu.edu), by phone at 703-993-2828, or on Twitter @MasonParking and @MasonShuttles.

## Mason Commutes

Looking for someone to share a ride or commute together by car, bike, or transit? Visit [masoncommutes.com](https://masoncommutes.com) to get started.

## Parking

- On the Fairfax Campus, we offer a host of daily, weekly, monthly, and semester parking options at various price points.
- For parking options, pricing, and permit purchase, including those at Mason Square and the Science and Technology Campus, please visit [parking.gmu.edu](https://parking.gmu.edu) to get started.
- Free Parking Available: There is a no-cost parking option that utilizes Mason Shuttles. You can park for free at the Manassas Mall and take the Fairfax/SciTech shuttle route to either campus. For all shuttle schedules, visit [shuttle.gmu.edu](https://shuttle.gmu.edu).

♥ Parking Services Building  
(next to Shenandoah Parking Deck)  
☎ 703-993-2710 ✉ [parking@gmu.edu](mailto:parking@gmu.edu)  
🏠 [parking.gmu.edu](https://parking.gmu.edu) 🐦 @MasonParking

## Mason Shuttles

Mason Shuttles offer multiple routes to transport the Mason community to a variety of destinations. Mason Shuttles are free, but require a Mason ID to ride.

- For times and stops, please visit [shuttle.gmu.edu](https://shuttle.gmu.edu). Schedules can be impacted by traffic volume, accidents, and road conditions. Don't cut it too close. Schedule yourself to arrive early, just in case. Mason Shuttles use the RideSystems real-time bus tracking site.
- Shuttle schedules are subject to change during emergencies, extreme weather conditions, holidays, and student breaks. Be sure to check [shuttle.gmu.edu](https://shuttle.gmu.edu) for the latest scheduling information.

## Transit

### CUE BUS

Mason students, faculty, and staff have free access to the Fairfax City CUE Bus. The CUE Bus has routes in Fairfax City, all of which end at the Vienna Metro Station. For details and the schedule, visit [cuebus.org](http://cuebus.org). The CUE Bus stops on campus at Rappahannock River Lane (next to Merten Hall) and uses the TransLoc website and app to track bus arrival times.

### METRO

The closest Metro stop in Fairfax is the Vienna Metro Station on the Orange Line. From there, you can travel to various locations in Washington, D.C., and to Mason Square in Arlington (Virginia Square-GMU Metro Station). For a Metro rail map, visit [wmata.com/schedules/maps](http://wmata.com/schedules/maps). Please note that Metro schedules and service levels are subject to change. To stay up to date, sign up for Metro Alerts at [wmata.com/rider-guide/subscribe](http://wmata.com/rider-guide/subscribe).

### PUBLIC BUSES

The Washington Metropolitan Area Transit Authority (WMATA) runs bus services in multiple jurisdictions in Virginia, Maryland, and Washington, D.C. If you are traveling within Fairfax County, check out the Fairfax Connector. Within Arlington County, you can ride on the ART buses and in Prince William County, look into the PRTC buses. All of these buses, the CUE Bus, Metro trains, and more can be routed using the WMATA trip planner at [wmata.com](http://wmata.com). Map it out before you go!

## Transportation

### BIKING OPTION

Mason has more than 1,300 bike parking spots on campus and is a silver-rated Bicycle-Friendly University in Fairfax and bronze-rated at Mason Square. Register your bicycle at [bike.gmu.edu](http://bike.gmu.edu) and receive a free U-lock, registration sticker, bike light, and more.

As a student, you also have access to a \$25 annual membership to Capital Bikeshare. Bikeshare stations are located on the Fairfax Campus and at Mason Square, as well as throughout the region.

To find out more about bicycling at Mason and to see a map of facilities, visit [bike.gmu.edu](http://bike.gmu.edu).

### CARPPOOL

#### CARPPOOL ZONES: FLEXIBLE AND EASY

- Premium Carpool Program: Save some money!
- Application required

More information on the premium student carpool option is available at [transportation.gmu.edu](http://transportation.gmu.edu) by clicking on the transportation tab.

#### ZIPCAR

- Rent a car just when you need it, by the hour or the day
- Available on the Fairfax Campus
- Sign up at [zipcar.com/zipgmu](http://zipcar.com/zipgmu)
- Gas and secondary insurance are included in the rental rate

#### TRANSPORTATION ADMINISTRATION

📞 703-993-2828 ✉ [transpo@gmu.edu](mailto:transpo@gmu.edu)  
🏠 [transportation.gmu.edu](http://transportation.gmu.edu) 📱 @MasonShuttles





# MASON CARD OFFICE

The Mason Card Office issues Mason IDs, administers meal plans, and coordinates the Mason Money program.

## Mason ID

The Mason ID is an integral part of campus life and provides access to the following:

- Meal Plans
- Residence Halls
- Mason Athletic Events
- University Libraries
- Mason Shuttles
- Printing
- Mason Money
- Exams
- Lab/Room Access
- Center for the Arts Performances

Students should submit a picture for the Mason ID online. It must be taken against a white background from the shoulders up. For additional requirements, visit the following site: [masonmoneyonline.gmu.edu](https://masonmoneyonline.gmu.edu).

You must visit the Mason Card Office located in Student Union Building I and show a government-issued photo ID (passport, military ID, or driver's license) to obtain a physical Mason ID. Or, mobile digital credentials can be provided once the uploaded photo has been approved.

Only one Mason ID is allowed, either mobile or physical. Visit the Mason Mobile ID website for more information at [masoncard.gmu.edu/mobile](https://masoncard.gmu.edu/mobile).

## Lost Mason IDs

There is a \$25 fee for lost, stolen, or damaged Mason IDs. The Office of Housing and Residence Life offers temporary cards for residence hall access for 48 hours.

## Meal Plans

George Mason University's dining program promotes community dining and healthy choices. Choose from three dining halls and 20+ venues across three campuses. Plans are billed to the student account, which allows for tax-exempt dining. Visit [mealsplans.gmu.edu](https://mealsplans.gmu.edu) for more information.

Meal plan usage and changes can be viewed on the Atrium Campus Connect app or online at [masonmoneyonline.gmu.edu](https://masonmoneyonline.gmu.edu).

## Students Living on Campus

Students choose their freshman meal plan during housing selection. The Independence plan provides unlimited access into the dining halls, three guest swipes, and Bonus Funds.

Bonus Funds are accepted in all dining venues and available in \$100 increments up to \$500. Unused balances roll over from fall to spring semesters.

## Students Living Off Campus

Students living off campus are welcome to take advantage of cost-saving meal plans. The meal plan website has all the details.



## Mason Money

Mason Money is a debit card program. Funds can be loaded onto the Mason ID to make purchases both on and off campus. For deposits and a complete list of retailers visit [masonmoneyonline.gmu.edu](https://masonmoneyonline.gmu.edu)

## Bonus Funds vs. Mason Money

Bonus Funds	Mason Money
Part of the meal plan accessed with the Mason ID	A declining account attached to Mason ID
Tax -exempt purchases in select dining locations	Taxable on all purchases
Remaining balance rolls from fall to spring	Balance stays throughout matriculation
Accepted by Starship (robot delivery) and Grubhub	Accepted by Starship (robot delivery) and Grubhub
Only accepted at dining venues on campus	Accepted at all on- and off- campus dining venues, the bookstore, for printing, etc.
Billed to the student account	Funds deposited via Online Card Office or Mason Card Office. Visa/MasterCard accepted.

📍 SUB I, Room 1203

☎ 703-993-1004 🏠 [mealsplans.gmu.edu](https://mealsplans.gmu.edu)

🏠 [Masonid.gmu.edu](https://Masonid.gmu.edu)



# MASON DINING

Whether you are living on or off campus, our meal plan options are available to all students. Choose from a variety of plans that suit your lifestyle and preferences—from all-you-care-to-eat in our dining halls to more than 20 retail locations across three campuses. Discover your choices online at [dining.gmu.edu](https://dining.gmu.edu) by taking a dining quiz.

View the menus for all dining halls on our websites or by downloading the Everyday app. Within the app, menu items will display allergens and nutritional content.

We take pride in being the first university in the nation to be Spokin verified. We have several options across campus that serve allergen-friendly meals including our exclusive Simple Servings station, Simple Zone allergen-free pantry, and our certified allergen-friendly bakery. Your health and dietary needs are essential to us, and our award-winning healthy eating and allergen-friendly dining programs make it easy for you to find foods that fit your preferences.

Sustainability and diversity are at the core of our dining program. With four dining halls to choose from, we proudly observe eco-friendly practices and diverse culinary choices, and we are committed to making a positive impact on both your dining experience and the environment. Indulge in vegetarian and vegan-friendly options at our exclusive plant-forward dining hall, The Spot! All our dining halls also serve halal or kosher offerings. Mason also participates in food waste prevention via LeanPath and pre-consumer composting.

Busy studying? Don't give up your table in the library—order delivery via Mason Dining's Starship robot delivery fleet! Download the Starship Deliveries app from the App Store or Google Play to start placing orders today.

Elevate your college dining experience at Mason! If you have any questions or need assistance, feel free to email [dining@gmu.edu](mailto:dining@gmu.edu) or visit our website, [dining.gmu.edu](https://dining.gmu.edu).



Scan the QR code to take the dining quiz!

✉ [dining@gmu.edu](mailto:dining@gmu.edu) 🗨 Text DiningLive to 82257

🏠 📷 @mason\_dining



# PRINT AND MAIL SERVICES

## Student Printing

George Mason University has partnered with Canon to provide print services for all students. Mason uses a “Follow Me Print” system in which students can send their print jobs from any computer connected to the university’s computer network. This network includes campus-owned devices and personal computers or mobile devices. Students can retrieve their print jobs from any of the almost 300 multifunction devices located across all Mason campuses.

Students are not required to purchase a personal printer, as Canon devices are available in all on-campus residence halls. Each residence hall will have at least one device available 24 hours a day, seven days a week. Devices are also available in all areas frequented by students.

The Canon devices can also be used for copying and scanning.

Mason Money is used to pay for printing at a cost of \$0.10 for each black-and-white print/copy and \$0.25 for each color print/copy. There is no charge for scanning. Students will not be charged until they release their job(s) at a device.

Canon operates a full-service print shop on campus to fulfill all printing needs. Products include, but are not limited to, posters, banners, flyers, business cards, bound items, and yard signs. More information about the Canon Print Hub can be found at [gmuprinthub.com](http://gmuprinthub.com).

## Mail Procedures

All students living on campus are assigned a mailbox number by mail services free of charge. This number will be each

student’s unique identifier for sending and receiving paper mail and packages.

Student mailing addresses are written as follows:

First Name Last Name  
4450 Rivanna River Way #XXXX (Student’s unique mailbox number)  
Fairfax, VA 22030

All mail and packages **MUST** contain the mailbox number.

All student mail is stored at The Hub on the lower level in the Mail Services area.

Paper mail (letters, magazines, etc.) is stored in file folders behind the Mail Services counter. Students will walk up to the counter and request their paper mail from a Mail Services representative.

Packages are stored in computerized smart lockers. Students will receive an email/text message alerting them to the presence of a package. This message will contain the locker number and four-digit code to retrieve the package. If the item is oversized, oddly sized, or perishable, the message will instruct them to pick up the package at the counter.

There is no notification for paper mail.

Mail Services offers outbound parcel service through the U.S. Postal Service and UPS. Payment can be made by credit/debit card or Mason Money.

For more information, please visit [printandmail.gmu.edu](http://printandmail.gmu.edu).





# George Mason Bookstore

3 EASY WAYS TO ORDER

COURSE MATERIALS

- IN STORE

- ONLINE

- PATRIOT WEB

*Student Services > Registration >*

*Purchase Textbooks*

---

## PATRIOT TECH



Shop our university recommended laptops

GMU.BNCCOLLEGE.COM • (703) 993-2666



# MASON ARTS FOR MASON CORE

EMBRACE YOUR CREATIVE ENERGY AND COMPLETE  
YOUR MASON CORE ARTS REQUIREMENT AT THE SAME TIME.



Step into the spotlight with THR 210

Start your screenplay with FAVS 280

Toot your horn or lift your voice in MUSI 383 or 381

For a full list of all your Mason Arts for  
Mason Core options, explore the catalog.

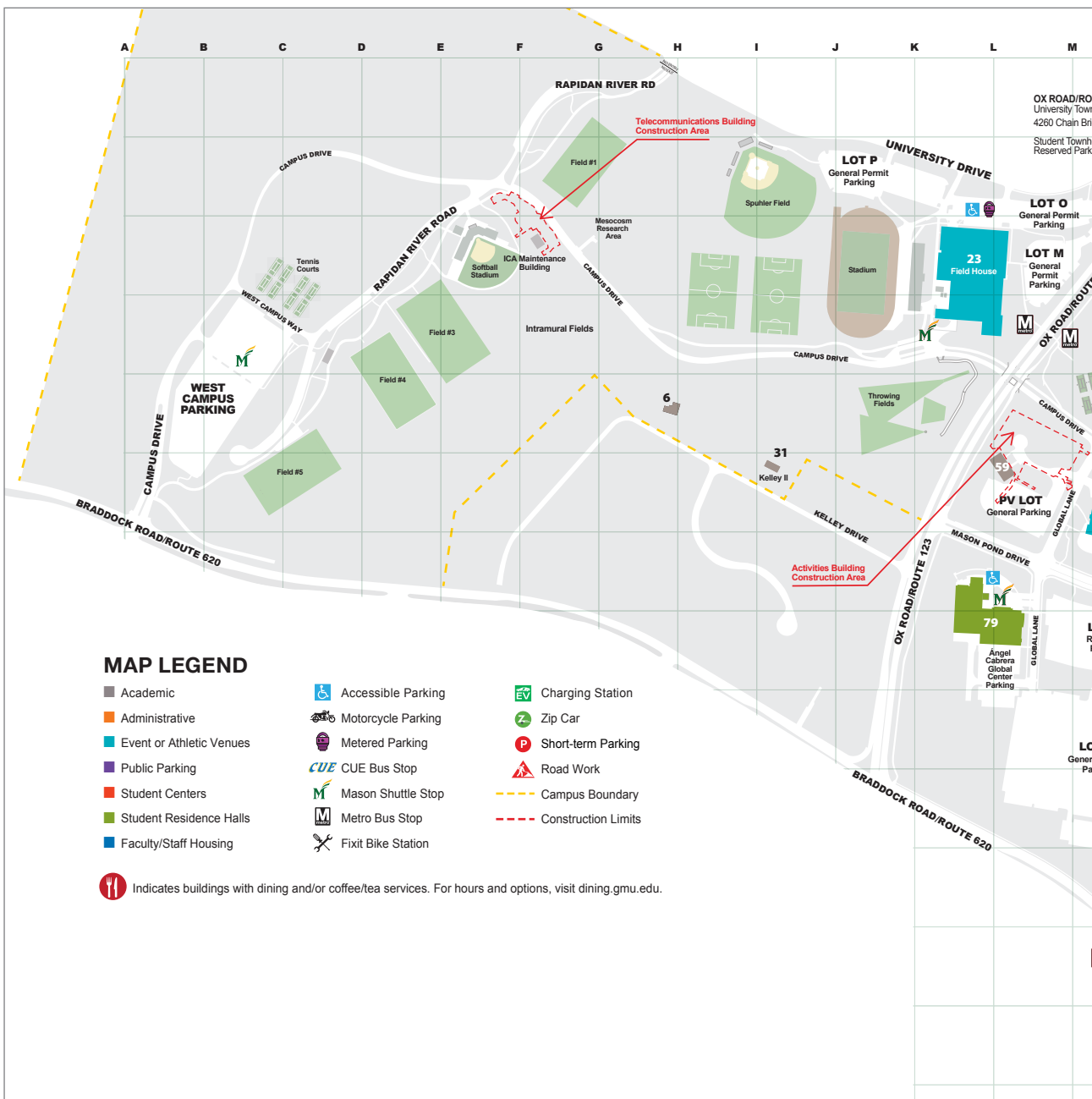
[catalog.gmu.edu/mason-core](https://catalog.gmu.edu/mason-core)

## MASONARTS



COLLEGE OF VISUAL  
AND PERFORMING ARTS  
George Mason University®

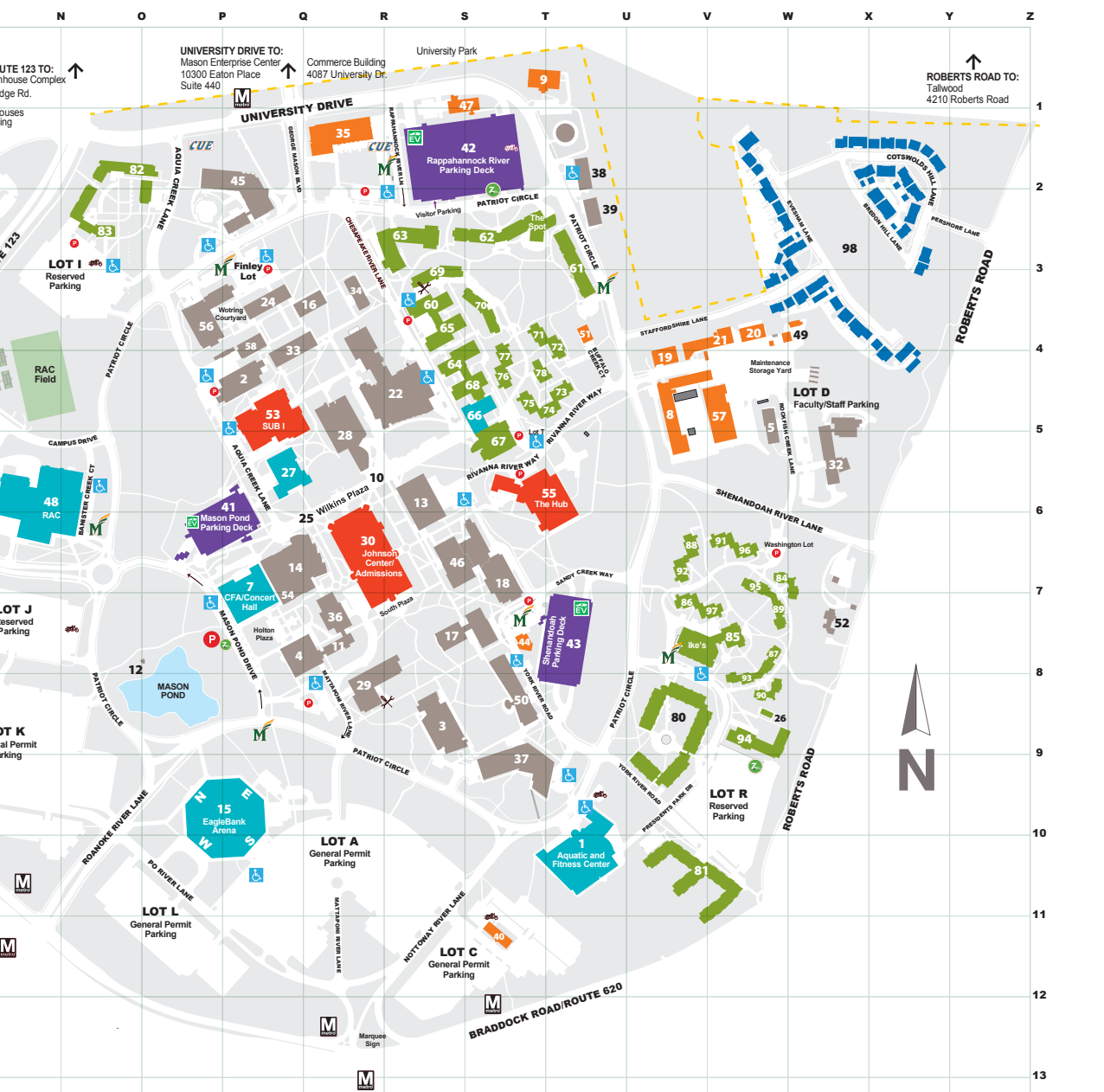




## MAP LEGEND

- Academic
  - Administrative
  - Event or Athletic Venues
  - Public Parking
  - Student Centers
  - Student Residence Halls
  - Faculty/Staff Housing
  - Accessible Parking
  - Motorcycle Parking
  - Metered Parking
  - CUE Bus Stop
  - Mason Shuttle Stop
  - Metro Bus Stop
  - Fixit Bike Station
  - Charging Station
  - Zip Car
  - Short-term Parking
  - Road Work
  - Campus Boundary
  - Construction Limits
- Indicates buildings with dining and/or coffee/tea services. For hours and options, visit [dining.gmu.edu](http://dining.gmu.edu).

- |   |   |   |
|---|---|---|
| 1 T-10 Aquatic and Fitness Center                           | 21 V-4 Facilities Management, Operations                                | 40 S-11 Nottoway Annex  |
| 2 P-4 Aquia Building  | 22 R-4 Fenwick Library <span style="color: red;">  </span>              | 41 P-6 Parking Deck, Mason Pond                                     |
| 3 R-9 Art and Design Building                               | 23 K-3 Field House and Module   | 42 S-1 Parking Deck, Rappahannock River                             |
| 4 Q-8 Buchanan Hall   | 24 Q-3 Finley Building  | 43 T-8 Parking Deck, Shenandoah                                     |
| 5 W-5 Carow Hall  | 25 Q-6 George Mason Statue and Enslaved People of George Mason Memorial | 44 S-7 Parking Services   |
| 6 H-4 Carty House   | 26 W-9 Greenhouse   | 45 P-2 Peterson Hall <span style="color: red;">  </span>            |
| 7 P-7 Center for the Arts/Concert Hall                      | 27 Q-6 Harris Theatre   | 46 S-7 Planetary Hall   |
| 8 V-5 Central Heating and Cooling Plant                     | 28 Q-5 Horizon Hall   | 47 S-1 Police and Safety Headquarters                               |
| 9 T-1 Child Development Center                              | 29 R-8 Innovation Hall  | 48 N-6 Recreation and Athletic Complex (RAC)                        |
| 10 R-6 Clock  | 30 R-6 Johnson Center/Admissions <span style="color: red;">  </span>    | 49 W-4 Recycling Center   |
| 11 Q-8 College Hall   | 31 I-5 Kelley II - 10716 Kelley Drive                                   | 50 T-8 Research Hall  |
| 12 O-8 Cross Cottage  | 32 W-5 Krasnow Institute  | 51 U-4 Rivanna Module   |
| 13 R-6 David King Hall                                      | 33 Q-4 Krug Hall  | 52 X-7 Roberts House  |
| 14 Q-7 de Laski Performing Arts Building                    | 34 R-3 Lecture Hall   | 53 Q-5 Student Union Building I <span style="color: red;">  </span> |
| 15 P-10 EagleBank Arena <span style="color: red;">  </span> | 35 Q-1 Merten Hall <span style="color: red;">  </span>                  | 54 Q-7 TheaterSpace/Black Box                                       |
| 16 Q-3 East Building  | 36 Q-7 Music/Theater Building   | 55 T-6 The Hub <span style="color: red;">  </span>                  |
| 17 S-8 Enterprise Hall                                      | 37 T-9 Nguyen Engineering Building <span style="color: red;">  </span>  | 56 P-4 Thompson Hall  |
| 18 S-7 Exploratory Hall                                     | 38 T-2 Northeast Module   | 57 V-5 Warehouse, Customer Service Center                           |
| 19 U-4 Facilities Administration                            | 39 T-2 Northeast Module II  | 58 P-4 West Building  |
| 20 V-4 Facilities Management, Archives                      |   | 59 L-6 West PE Module   |



## STUDENT HOUSING

### Rappahannock Neighborhood

- 60 R-3 Blue Ridge
- 61 T-3 Eastern Shore
- 62 S-3 Hampton Roads and the Spot
- 63 R-3 Northern Neck
- 64 S-4 Piedmont\*/Housing Office
- 65 S-4 Sandbridge
- 66 S-5 Skyline Fitness Center
- 67 S-5 Southside Dining
- 68 S-4 Tidewater
- 69 S-3 Commonwealth
- 70 S-3 Dominion

### The Commons

- 71 T-4 Amherst
- 72 T-4 Brunswick
- 73 T-5 Carroll
- 74 T-5 Dickenson
- 75 T-5 Essex

- 76 S-4 Franklin
- 77 S-4 Grayson
- 78 T-4 Hanover

### Shenandoah Neighborhood

- 79 L-7 Angel Cabrera Global Center
- 80 V-9 Liberty Square
- 81 V-11 Potomac Heights
- 82 O-2 Rogers
- 83 O-2 Whitetop

### Presidents Park

- 84 W-7 Adams
- 85 V-7 Eisenhower\* and Ike's Diner
- 86 V-7 Harrison
- 87 W-8 Jackson
- 88 V-6 Jefferson
- 89 W-7 Kennedy
- 90 W-8 Lincoln

- 91 V-6 Madison
- 92 V-7 Monroe
- 93 V-8 Roosevelt
- 94 V-9 Taylor
- 95 W-7 Truman
- 96 W-6 Washington
- 97 V-7 Wilson

## FACULTY/STAFF HOUSING

- 98 X-3 Masonvale

\*24-hour Residential Desk

Stay up to date with construction information at [building.gmu.edu](http://building.gmu.edu).

Revised 04/2024



# MASON READY

Be prepared for emergencies on campus

## Mason Alert

Register your cell phone today  
to receive Mason Alert  
emergency notifications



## RAVE Guardian

Download our mobile app  
and access features like:

- Contact University Police and relay your location (virtual Blue Light Phone)
- Set a safety timer to walk alone with confidence
- Submit crime tips to University Police anonymously
- Links to resources and university contacts that you may need in an emergency
- ...and more!



DOWNLOAD NOW



VISIT [READY.GMU.EDU](https://ready.gmu.edu) TO LEARN MORE  
ABOUT EMERGENCY PREPAREDNESS



# EMERGENCY PREPAREDNESS TRAINING

Available now for students via  
Blackboard

## Learn about:

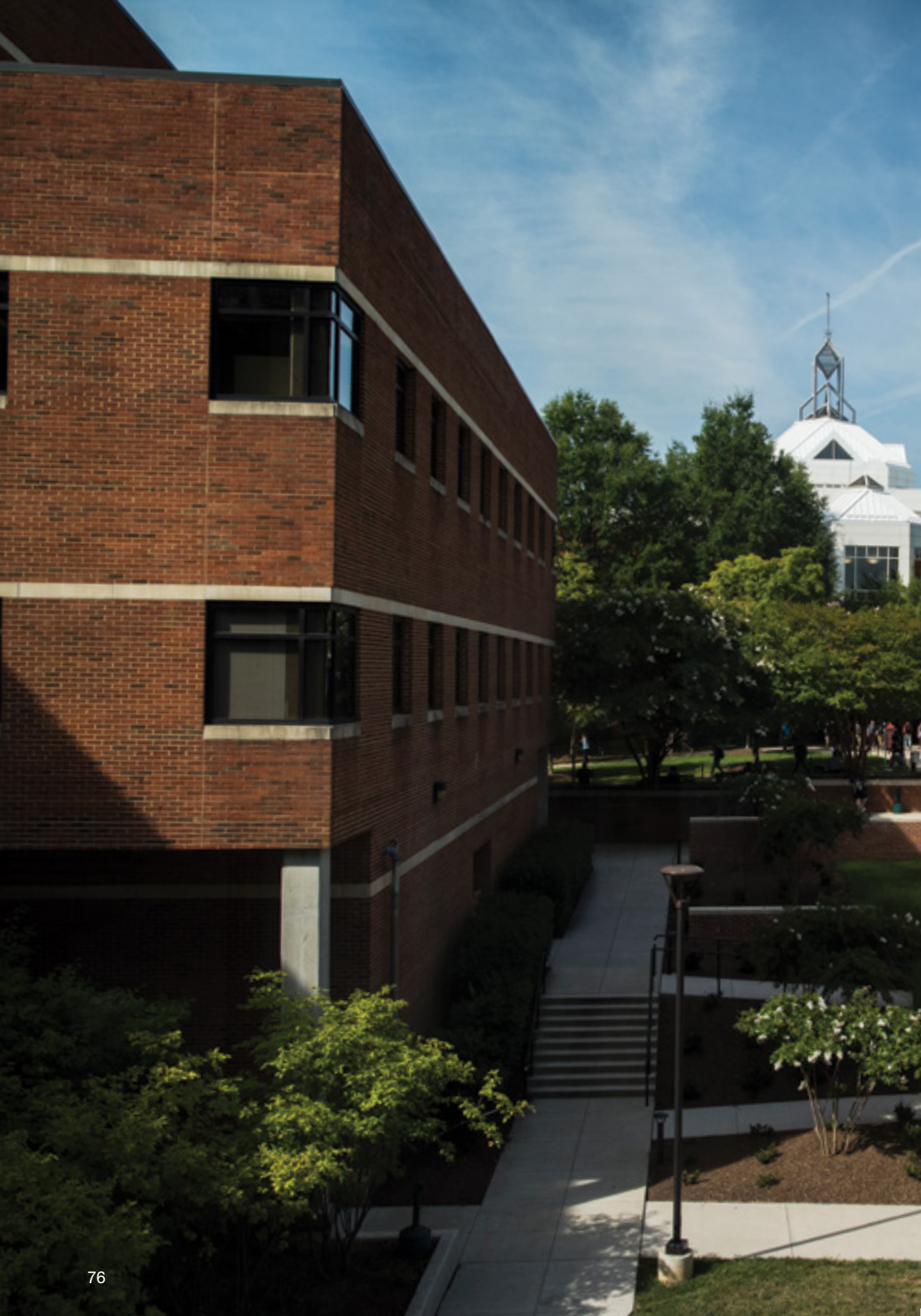
- Fundamental emergency preparedness procedures
- Emergency planning and response resources provided by Mason
- Assess and plan for known threats and anticipate hazards that might occur in the future
- Emergency response roles and responsibilities at Mason



LAUNCH COURSE

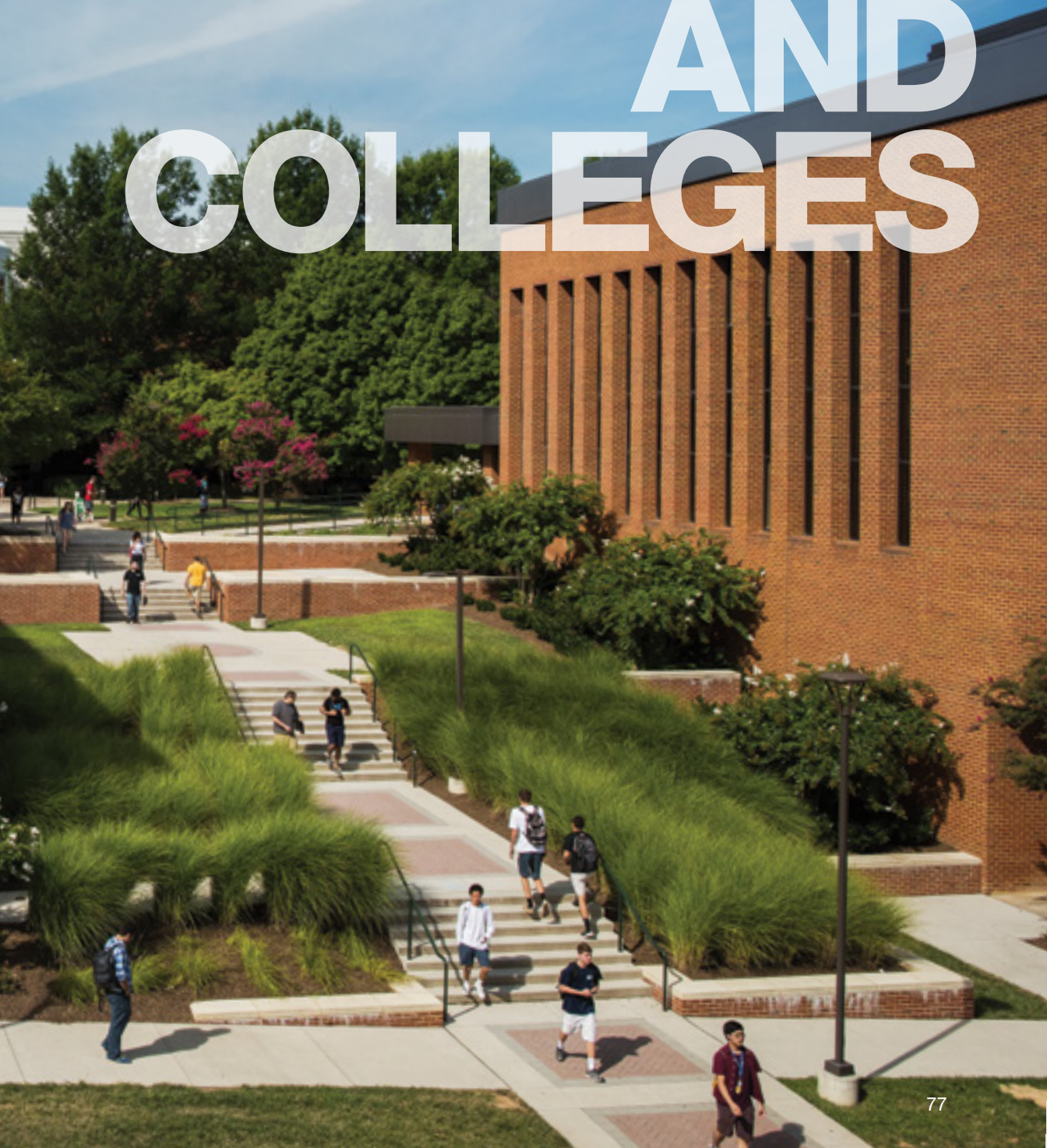
Learn even more on our website!

**READY.GMU.EDU**





# ACADEMIC SCHOOLS AND COLLEGES





# COLLEGE OF EDUCATION AND HUMAN DEVELOPMENT

Home to more than 4,000 undergraduate and graduate students, the College of Education and Human Development (CEHD) offers eight comprehensive undergraduate programs, and each provides at least two fieldwork experiences. Explore [cehd.gmu.edu](http://cehd.gmu.edu) for a complete overview of academic programs, services, and resources offered through the college.

## CEHD Student and Academic Affairs

Your home for student communications and support, including

- General CEHD information
- Student involvement
- Academic success assistance
- Scholarships
- Appeals and exceptions to policy
- Student concerns and grievances

Email [CEHDSAA@gmu.edu](mailto:CEHDSAA@gmu.edu) to learn more about any of these services.

## ACADEMIC ADVISING

Find your advisor at [cehd.gmu.edu/current-students/advising](http://cehd.gmu.edu/current-students/advising).

## Office of Teacher Preparation

- Teacher preparation pathway advising for current and prospective students
- Licensure information
- Content area coursework review

Email [preteach@gmu.edu](mailto:preteach@gmu.edu) for more information on teacher preparation.

## Undergraduate Academic Majors

### SCHOOL OF EDUCATION

Early Childhood Education for Diverse Learners, BSEd

**Concentrations:** Early Childhood Special Education (Licensure), Early/Primary Education PreK–3 (Licensure), Early Childhood Special Education and Early/Primary Education PreK–3 (Dual Licensure), No Concentration (Non-Licensure)

Elementary Education, BSEd

Physical Education, BSEd

Special Education, BSEd

**Concentrations:** Teaching Students with Disabilities who Access the General Curriculum K–12 (Licensure), Teaching Students with Disabilities who Access the Adapted Curriculum K–12 (Licensure), Teaching Students with Blindness and Visual Impairments PK–12 (Licensure), No Concentration (Non-Licensure)

### SCHOOL OF SPORT, RECREATION, AND TOURISM MANAGEMENT

Recreation Management, BS

**Concentrations:** Parks and Outdoor Recreation,

Therapeutic Recreation, Individualized Concentration

Sports Management, BS

Tourism and Events Management, BS

### SCHOOL OF KINESIOLOGY

Kinesiology, BS

**Concentrations:** Allied Health Sciences, Strength and Conditioning

## Minors and Undergraduate Certificates

Consider adding a minor or certificate to complement your interests and career goals. Visit [cehd.gmu.edu/academics/undergraduate](http://cehd.gmu.edu/academics/undergraduate) for more information.

American Sign Language Minor

Assistive Technology Minor

Coaching Minor

Early Childhood Education for Diverse Learners Minor

Educational Psychology Minor

Event Technical Production Minor

Food and Beverage Management Certificate

Hospitality Management Minor

Kinesiology Minor

Mild Disabilities Minor

Personal Health and Wellness Minor

Recreation Management Minor

Secondary Education Certificates (Biology, Chemistry, Computer Science, Earth Science, English, Mathematics, Physics, 6–12)

Severe Disabilities Minor

Sport and American Culture Minor

Sport and Computer Game Design Minor

Sport and Conflict Resolution Minor

Sport Communication Minor

Sport Management Minor

Sports Analytics Minor

Tourism and Events Management Minor

Visual Impairment and Blindness Minor

Wine and Craft Beverage Management

## Bachelor's/Accelerated Master's Programs

Many CEHD undergraduate programs have an associated accelerated master's program. Learn more at [cehd.gmu.edu/bachelors-accelerated-masters-program](http://cehd.gmu.edu/bachelors-accelerated-masters-program).

 [cehd.gmu.edu](http://cehd.gmu.edu)  703-993-2080

# COLLEGE OF PUBLIC HEALTH

The College of Public Health (CPH), the first and only public health college in Virginia, is home to the Departments of Global and Community Health, Health Administration and Policy, Nutrition and Food Studies, and Social Work, and the School of Nursing. We are located in Peterson Family Health Sciences Hall, which includes a community clinic, state-of-the-art nursing simulation and health informatics labs, and a high-tech nutrition kitchen where students can practice the skills they are learning within the classroom.

Our students prepare to be leaders in health care, public health, and social services, making them ready to solve the challenges of a rapidly changing health care environment. We have more than 1,800 undergraduate students enrolled in our six bachelor's degree programs and more than 1,350 graduate students enrolled in nearly 20 graduate degree programs and certificates.

The college emphasizes the importance of experiential learning so that students' education occurs both within and beyond the walls of the college. Student opportunities include collaborative research projects with faculty, professional development, networking with alumni, community service activities, health-related study-abroad courses, and the chance to gain leadership experience through student organizations and honor societies. For example, our Mason and Partners Clinics give our students valuable health care experience in an innovative multidisciplinary environment. At the same time, they provide more than \$90,000 a month in free health care to the most vulnerable members of our community.

CPH values diversity in its student body and faculty and provides an interdisciplinary education that enables students to develop analytical and creative thinking skills and to make well-founded ethical decisions. A team of professional and faculty advisors support and guide CPH students as they work toward their educational and professional goals.

CPH has strong relationships with many health care and human service agencies in the area. Students in CPH have the opportunity to complete a practicum course, and we have more than 200 active practicum sites for them to work with and gain hands-on experience that can lead to a job after graduation.

## ACADEMIC MAJORS

Community Health, BS

**Concentrations:** Standard Program, Global Health, Clinical Science, Nutrition, Physical Activity and Public Health

Health Administration, BS

**Concentrations:** Health Systems Management, Assisted Living/Senior Housing Administration

Health Informatics, BS

Nursing, BSN

**Pathways:** Traditional BSN (Direct Entry for Freshman OR Second Gate Admission for Transfers and Current Mason Students), Accelerated Second Degree, RN to BSN, Co-Enrollment (Veteran and Non-Veteran), Direct Admission

Social Work, BSW

## ACADEMIC MINORS

Aging Studies

Food Systems

Global Health

Health and Social Policy

Health Information Technology

Health Systems Management

Nutrition

Public Health

Senior Housing Administration

Social Work

 [publichealth.gmu.edu](http://publichealth.gmu.edu)  703-993-1901

## BACHELOR'S/ACCELERATED MASTER'S DEGREES

Bachelor's degree (any)/Health Informatics, MS

Bachelor's degree (any)/Nutrition, MS

Bachelor's degree (any)/Public Health, MPH

Health Administration, BS/Health Systems Management, MHA

# COLLEGE OF HUMANITIES AND SOCIAL SCIENCES

Offering more than 20 academic programs and numerous opportunities to blend the intellectual with the practical, the College of Humanities and Social Sciences (CHSS) prepares students to meet the needs of today's society and the demands of the future.

As a student in CHSS, you will develop career-relevant skills sought by employers, challenge yourself through academic pursuits and individual research projects, and take advantage of experiential learning opportunities.

Here are a few ways you can...

## CONNECT TO THE COLLEGE

- Take on a leadership role as a CHSS Ambassador
- Join or start a club in your major
- Attend a lunch with the dean
- Attend one of our LinkUp events geared toward connecting students with our alumni and discussing career choices and paths

## LEARN FROM EXPERIENCE

- Conduct individual research projects or fieldwork
- Complete honors in the major coursework
- Share your research with the Mason community at our annual CHSS Undergraduate Research Symposium
- Study abroad to learn a new language, pursue an international internship, or fulfill degree requirements

## DISCOVER CAREER GOALS

- Meet with our Career Services-CHSS liaison
- Enroll in one of our College-to-Career courses
- Pursue an internship in your field

For more information about our academic majors, concentrations, and more than 70 minors, please visit our website.

## BACHELOR'S/ACCELERATED MASTER'S PROGRAMS

Many of our majors have an associated accelerated master's pathway. If you would like to learn more about these pathways, please visit [chss.gmu.edu/programs/accelerated](http://chss.gmu.edu/programs/accelerated).

## ACADEMIC MAJORS

Anthropology, BA  
Art History, BA  
Communication, BA  
Creative Writing, BFA  
Criminology, Law and Society, BA or BS  
Economics, BA or BS  
English, BA  
Environmental and Sustainability Studies, BA\*  
Foreign Languages, BA

**Concentrations:** Arabic, Chinese, French, Korean and Spanish

Global Affairs, BA  
History, BA  
Human Development and Family Science, BA\*\*  
Individualized Study, BIS\*  
Integrative Studies, BA or BS\*  
Philosophy, BA  
Psychology, BA or BS  
Religious Studies, BA  
Russian and Eurasian Studies, BA  
Sociology, BA

\* Offered by the School of Integrative Studies within CHSS

\*\* Co-offered by the College of Education and Human Development

🏠 [academicaffairs.chss.gmu.edu](http://academicaffairs.chss.gmu.edu) 📞 703-993-8725





# COLLEGE OF SCIENCE

The College of Science (COS) plays the central role in undergraduate and graduate education and research in science and math at George Mason University. The college serves the local community and the nation by providing world-class leadership in a wide variety of areas important to modern society. All students within the college are strongly encouraged to take advantage of the many research opportunities available to them.

## ACADEMIC MAJORS

Astronomy, BS\*

Atmospheric Science, BS\*

Biology, BA or BS\*

**Concentration for BA:** Biological Illustration

**Concentrations for BS:** Biology Education, Biopsychology, Biotechnology and Molecular Biology, Environmental and Conservation Biology, Microbiology

Chemistry, BA or BS\*

**Concentrations:** Analytical Chemistry, Biochemistry, Environmental Chemistry, Materials Chemistry

Computational and Data Sciences, BS\*

Environmental Science, BS\*

**Concentrations:** Conservation; Ecological Science; Environmental Health; Human and Ecosystem Response to Climate Change; Marine, Estuarine, and Freshwater Ecology; Wildlife

Environmental and Sustainability Studies, BA\*\*

Forensic Science, BS\*

**Concentrations:** Forensic Biology, Forensic Chemistry

Geography, BA or BS\*

**Concentrations** (BA only): Environmental Geography, Geanthropology, Health Geography

Geology, BA or BS\*

**Concentrations** (BS only): Earth Surface Processes, Environmental Geoscience, Geology, Oceanography and Estuarine Science, Paleontology

Mathematics, BA or BS\*

**Concentrations** (BS only): Actuarial Mathematics, Applied Mathematics, Mathematical Statistics

Medical Laboratory Sciences, BS

Neuroscience, BS\*

Physics, BS\*

**Concentrations:** Applied and Engineering Physics, Astrophysics, Computational Physics

Undeclared COS

*\*Also available as a minor*

*\*\*Joint program with the College of Humanities and Social Sciences*

## ACADEMIC MINORS

Astronomy

Astrophysics

Bioinformatics

Biology

Chemistry

Computational and Data Sciences

Conservation Biology

Conservation Studies

Design Thinking

Earth Science

Environmental Policy

Environmental Science

Forensic Science

Geography

Geographic Information Science

Geology

Government Analytics

Mathematics

Neuroscience

Ocean and Estuarine Science

Paleontology

Physics

Renewable Energy

Scientific Leadership and Practice

Sustainability Studies

Sustainable Enterprise

Urban Informatics

 [science.gmu.edu](https://science.gmu.edu)  703-993-9532

# COLLEGE OF VISUAL AND PERFORMING ARTS

Our College of Visual and Performing Arts (CVPA) students regularly perform, create, exhibit, and develop unique and inspired art—in whatever form that takes. Each program features a wide range of discipline-based technique courses and academic preparation in the history and theory of the art form. Many classes within CVPA are also open to non-majors, and numerous courses fulfill Mason Core requirements.

**An audition, portfolio, or writing sample review is required for acceptance into most CVPA majors.**

## A Community of Artists

CVPA students have many ways to express their creativity:

- The CVPA Residential Learning Community for first-year students and Arts Residential Learning Community for upper-level students
- Navigation Press—artists work directly with students
- Mason Players and theatrical productions are **open to all Mason students** for both technical positions and casting
- Music lessons and many ensembles, including the Green Machine, are also **open to all Mason students**
- Free student tickets to performances at the Center for the Arts ([cfa.gmu.edu/tickets/free-student-tickets](http://cfa.gmu.edu/tickets/free-student-tickets))
- Fall Film Showcase and Spring Mason Film Festival
- Game Analysis and Design Interest Group
- Senior Game Expo
- Mason Dance Company performances throughout the year, highlighted by the Spring Dance Gala

## Schools/Departments Offering Majors, Concentrations, and Minors

### SCHOOL OF ART ([art.gmu.edu](http://art.gmu.edu))

Faculty and students in the School of Art work together and across disciplines to experiment and challenge conventional thinking in a hands-on adaptive curriculum. We offer numerous concentrations, including photography, graphic design, printmaking, painting, drawing, and sculpture.

### COMPUTER GAME DESIGN ([game.gmu.edu](http://game.gmu.edu))

Computer game design students use state-of-the-art technology to create their own games. Because our program leads to a BFA, our approach goes beyond basic coding and programming to incorporate graphic design elements, animation, and game theory. Students work in a team environment but specialize in what speaks to them.

### SCHOOL OF DANCE ([dance.gmu.edu](http://dance.gmu.edu))

Dance majors train and perform with the rigor of a conservatory. The program also offers courses in a variety of dance styles, plus many world dance experiences for all university students.

### FILM AND VIDEO STUDIES ([favs.gmu.edu](http://favs.gmu.edu))

The Film and Video Studies Program trains students to take a project from conception through creation, production, and post-production in a variety of film and video styles.

### REVA AND SID DEWBERRY FAMILY SCHOOL OF MUSIC ([music.gmu.edu](http://music.gmu.edu))

Dewberry School of Music students learn from active performers, conductors, and composers who are among the most distinguished experts in their fields. Instruction is rigorous, yet conducted in a nurturing environment.

### SCHOOL OF THEATER ([theater.gmu.edu](http://theater.gmu.edu))

The School of Theater explores and expresses the human spirit through the study of drama's historical, contemporary, and cultural traditions; training in the craft; and the presentation of plays.

### ARTS MANAGEMENT ([artsmanagement.gmu.edu](http://artsmanagement.gmu.edu))

The arts management minor is open to CVPA and art history majors. Arts management offers many career paths that rely on a strong foundation in one or more art forms and requires specific knowledge and skills in administration and management.

## Accelerated Master's Programs

Undergraduate CVPA majors in the School of Art and the Dewberry School of Music lead into certain master's degree programs—art education (MAT) with licensure, graphic design (MA), and music performance (MM). Any bachelor's degree at Mason can lead to an accelerated master of arts (MA) in arts management. See [cvpa.gmu.edu/academics/accelerated-programs](http://cvpa.gmu.edu/academics/accelerated-programs) for full details.

 [cvpa.gmu.edu](http://cvpa.gmu.edu)  703-993-5572

# DONALD G. COSTELLO COLLEGE OF BUSINESS

The Donald G. Costello College of Business is ranked in the top 10 percent of the nation's undergraduate business schools and offers a bachelor of science degree in business with innovative concentrations. The Costello College of Business also offers several options for a minor for business and nonbusiness majors, as well as one undergraduate certificate program in accounting. In addition, there is an advanced accelerated accounting program for students in the accounting concentration to complete the required coursework for a bachelor's in business and a master's degree in accounting in four years. The Costello College of Business programs are designed to prepare graduates for work in a rapidly changing and competitive marketplace with local, regional, and global companies. With Mason's location in Northern Virginia and proximity to Washington, D.C., combined with the assistance of the Costello College of Business's own Career Services and Student Success and Academic Services staff, students are also afforded exceptional opportunities to gain practical experience and global engagement opportunities to complement their academic coursework.

## ACADEMIC ADVISING

The Costello College of Business has a dynamic team of professional academic advisors available to help students navigate their undergraduate business degree.

## CAREER SERVICES

A wide variety of career services are provided specifically for Costello College of Business students by a dedicated team of professionals who are prepared to help students through their career development process. Visit Enterprise Hall, call

**703-993-2140**, or email

**[mycareer@gmu.edu](mailto:mycareer@gmu.edu)** for more information.

## UNDERGRADUATE ACADEMIC CONCENTRATIONS

Accounting

Business Analytics

Finance

Financial Planning and Wealth Management

Management

Management Information Systems

Marketing

Operations and Supply Chain Management

## UNDERGRADUATE CERTIFICATES

Accounting

## ACCELERATED MASTER'S PROGRAMS

Accounting, BS and MS

Advanced Accelerated Master's Program in Accounting,  
BS and MS (four-year program)

Business Analytics, BS and MS

Finance, BS and MS

Management, MS (for nonbusiness majors only)

## UNDERGRADUATE ACADEMIC MINORS

Business (for nonbusiness majors only)

Business Analytics

Energy Transition Management

Entrepreneurship

Finance

Globally Responsible Business Practices

Government Contracting

International Business

Management Information Systems

Marketing

Operations and Supply Chain Management

Organizational Conflict Resolution

Real Estate Development

Wine and Craft Beverage Management

## GRADUATE PROGRAMS

Accounting, MS

Business, PhD

Business Analytics, MS

Finance, MS

Management, MS

Master of Business Administration, MBA

Real Estate Development, MS

Technology Management, MS

📍 Enterprise Hall, Room 008 ✉ [masonbus@gmu.edu](mailto:masonbus@gmu.edu)

🏠 [business.gmu.edu](http://business.gmu.edu) 📞 703-993-1880





# SCHAR SCHOOL OF POLICY AND GOVERNMENT

At the Schar School of Policy and Government, future leaders learn to tackle real-world problems from prominent and dedicated faculty members, many of whom are active practitioners in government and politics in Washington, D.C. Whether you take a diplomacy course with a retired ambassador, study money markets and economic policy with a Pulitzer Prize-winning *Washington Post* columnist, or study abroad to learn about oil politics in the Middle East with an expert from a nongovernmental organization, you will learn from and study alongside the very best.

## OPPORTUNITIES TO BUILD EXPERTISE

In and out of the classroom, you can cultivate your connections and take your academic experience to the next level:

- Internships on Capitol Hill and with law firms, nonprofits, and federal agencies
- Undergraduate Research Assistant Program
- Pre-Law advising
- Global Politics Fellows
- Peace Corps Prep Program
- Accelerated master's option
- Faculty-led Learning Communities (LCs)
- Short-term international courses

## ACADEMIC MAJORS

### GOVERNMENT AND INTERNATIONAL POLITICS, BA

This degree program is ideal for students who are interested in a career path in political analysis, international relations and security, public service, campaigns, or research. As a student in the program, you will learn to critically examine political issues, prominent actors, and processes in government, foreign policy, and international affairs. As governments and politics around the world respond to the rapid advancement of technology, this degree program equips students to face new challenges boldly and effectively.

### PUBLIC ADMINISTRATION, BS

Do you dream of a career where you can change the world and advance the public good through work, policy advocacy, or service in federal, state, or local government? The public

administration bachelor's degree program reflects a community of talented and professional individuals who are driven to make a difference. Students in the program gain the analytical and decision-making skills to design, manage, and implement policies and programs that address complex challenges facing communities locally and around the world. Majors graduate with a firm understanding of what it means to effectively manage a public or nonprofit organization and with the budgetary, statistical, and information systems skills that are in such high demand in government positions.

### INTERNATIONAL SECURITY AND LAW, BA

Traditional and nontraditional security threats affect the lives of millions around the globe every day. This dynamic program combines national and international security and law and is designed to help students understand how to most effectively respond to these threats—from weather disasters to cyber attacks to nuclear proliferation and more.

Whether you aspire to lead a government or nonprofit organization, develop public policies and programs, create innovative consulting solutions, or provide expert analysis, you will graduate from the Schar School prepared to meet the challenges of a changing world.

🏠 [schar.gmu.edu](https://schar.gmu.edu) 📞 703-993-1400  
♥️ Aquia Building, Room 337

# SCHOOL OF INTEGRATIVE STUDIES

Connecting the classroom to the world! School of Integrative Studies students address contemporary social and environmental challenges. Based in the College of Humanities and Social Sciences, the school offers small, seminar-style classes that emphasize critical and creative thinking, effective communication, and diversity in thought. Students connect academic interests with hands-on learning to prepare for a life and career with meaning and impact. The school prepares graduates to assume leadership roles in the fields of business, law, government, health care, education, and the nonprofit sector, among others.

## ACADEMIC MAJORS

### HUMAN DEVELOPMENT AND FAMILY SCIENCE, BA

#### INDIVIDUALIZED STUDY, BIS

##### Concentrations

- Individualized
- Early Childhood Education Studies

### INTEGRATIVE STUDIES, BS OR BA

##### Concentrations

- African and African American Studies, BA
- Childhood Studies, BA
- Education Studies, BA
- Individualized Study, BA or BS (consult an advisor)
- Integrated Conservation, BS
- Leadership and Organizational Development, BA
- Legal Studies, BA
- Life Sciences, BS

## Emphasis Areas

- Pre-Dentistry, Pre-Medicine, Pre-Occupational Therapy, Pre-Optometry, Pre-Pharmacy, Pre-Physical Therapy, Pre-Physician's Assistant, Pre-Veterinary
- Social Justice and Human Rights, BA
- Social Science for Education, BA
- Women and Gender Studies, BA

### ENVIRONMENTAL AND SUSTAINABILITY STUDIES, BA

##### Concentrations

- Business and Sustainability
- Climate Change and Society
- Conservation and Sustainability
- Environmental Policy and Economics
- Equity and Environmental Justice
- Sustainable Food and Agriculture

## ACADEMIC MINORS

- Childhood Studies
- Conservation Studies
- Human Development and Family Science
- Leadership
- Nonprofit Studies
- Social Justice and Human Rights
- Well-Being

 [integrative.gmu.edu](http://integrative.gmu.edu)





# JIMMY AND ROSALYNN CARTER SCHOOL FOR PEACE AND CONFLICT RESOLUTION

Challenges are everywhere: polarized social and political issues, arguments within families and workplaces, limited resources, and complex issues of violence, inequality, and justice. Internationally recognized in the field of peace and conflict studies, we prepare you to understand and creatively address these real-world problems.

As a bachelor's student, you'll be able to select one of seven multidisciplinary concentrations, selecting courses from across Mason to tailor your degree to match your personal and professional goals. Additionally, our interdisciplinary faculty are committed to moving the educational experience beyond the classroom. Practical experience is important, and we'll prepare you with skills and expertise through service and experiential learning opportunities that will prepare you for a meaningful career. Our alumni are leaders and innovators working in academia, government agencies, international peace-building organizations, and the private sector.

## BE PREPARED, MAKE A DIFFERENCE

- The No. 1 public university for peace and conflict resolution studies in the United States
- The chance to develop in-demand job skills across a wide range of careers
- International learning experiences, with more than 50 percent of students studying abroad
- Small class sizes and a close-knit community
- An alumni network that includes leaders and innovators in management, peacebuilding, education, development, human resources, nonprofit organizations, and mediation.
- Exceptional student support that is consistently recognized for excellence in advising and student services

## DEGREE PROGRAMS

Bachelor of Arts, Bachelor of Science  
Accelerated Master's

## ACADEMIC MINORS

Conflict Analysis and Resolution  
Organizational Conflict Resolution  
Peace Engineering  
Sport and Conflict Resolution

## CONCENTRATIONS

**Building Peace in Divided Societies**—Learn how societies with a history of conflict seek to transform relationships, violence, and injustice

**Collaborative Leadership**—Learn skills for improving the capacity of leaders to work with conflict and manage change

**Environmental Conflict and Collaboration**—Examine how communities are dealing with environmental issues, and develop skills to promote collaborative solutions

**Global Engagement**—Study the dynamics and impact of global conflict

**Interpersonal Dynamics**—Develop knowledge and skills for transforming conflict in relationships, families, and organizations

**Justice and Reconciliation**—Focus on relationships between human rights, justice, and conflict resolution

**Political and Social Action**—Examine ways people organize to effect change in their societies

🏠 [carterschool.gmu.edu](http://carterschool.gmu.edu) 📞 703-993-4165  
✉️ [ugradcar@gmu.edu](mailto:ugradcar@gmu.edu)



# COLLEGE OF ENGINEERING AND COMPUTING

The College of Engineering and Computing offers degrees in many of today's most rewarding and challenging fields. Students explore the frontiers of technology, gain valuable work experience, and make professional contacts while earning their degrees. After graduation, alumni have many choices, including pursuing advanced graduate programs, heading straight to work for some of the area's high-tech companies, or starting their own businesses.

## ACADEMIC MAJORS

### **Applied Computer Science** 703-993-1530

*Concentrations:* Bioinformatics, Business Management, Business Marketing, Computer Game Design, Geoinformatics, Software Engineering, Technology Policy

### **Bioengineering** 703-993-5846

*Concentrations:* Biomedical Imaging and Devices, Biomaterials and Nanomedicine, Computational Biomedical Engineering, Healthcare Informatics, Neurotechnology and Computational Neuroscience, Pre-Health

### **Civil and Infrastructure Engineering** 703-993-5607

### **Computer Engineering** 703-993-1569

*Concentrations:* Computer Networks, Embedded Systems, Hardware and System Security, Internet of Things, Power and Energy Systems, Robotics

### **Computer Science** 703-993-1530

### **Cyber Security Engineering** 703-993-1502

### **Electrical Engineering** 703-993-1569

*Concentrations:* Controls and Robotics, Communications and Signal Processing, Electronics, Embedded Systems, Internet of Things, Power and Energy Systems, Sustainable Data Center Engineering

### **Information Technology** 703-993-3565

*Concentrations:* Cloud Computing, Cybersecurity, Database Technology and Programming, Health Information Technology, Network and Telecommunications, Web Development

### **Mechanical Engineering** 703-993-5383

*Concentrations:* Aerospace Engineering, Engineering Mechanics, Microfabrication, Robotics, Specialized Facilities

### **Statistics** 703-993-3645

*Concentrations:* Applied Statistics, Mathematical Statistics, Sports Analytics, Statistical Analytics

### **Systems and Industrial Engineering** 703-993-1670

### **CEC Undeclared and Undecided** 703-993-3088

## ACADEMIC MINORS

Aviation Flight Training and Management 703-993-1670

Bioengineering 703-993-5846

Computer Science 703-993-1530

Data Analysis 703-993-3645

Electrical and Computer Engineering 703-993-1569

Environmental Engineering 703-993-1675

Information Technology 703-993-3565

Mechanical Engineering 703-993-5383

Software Engineering 703-993-1530

Statistics 703-993-3645

STEM in Society (CEC) 703-993-5778

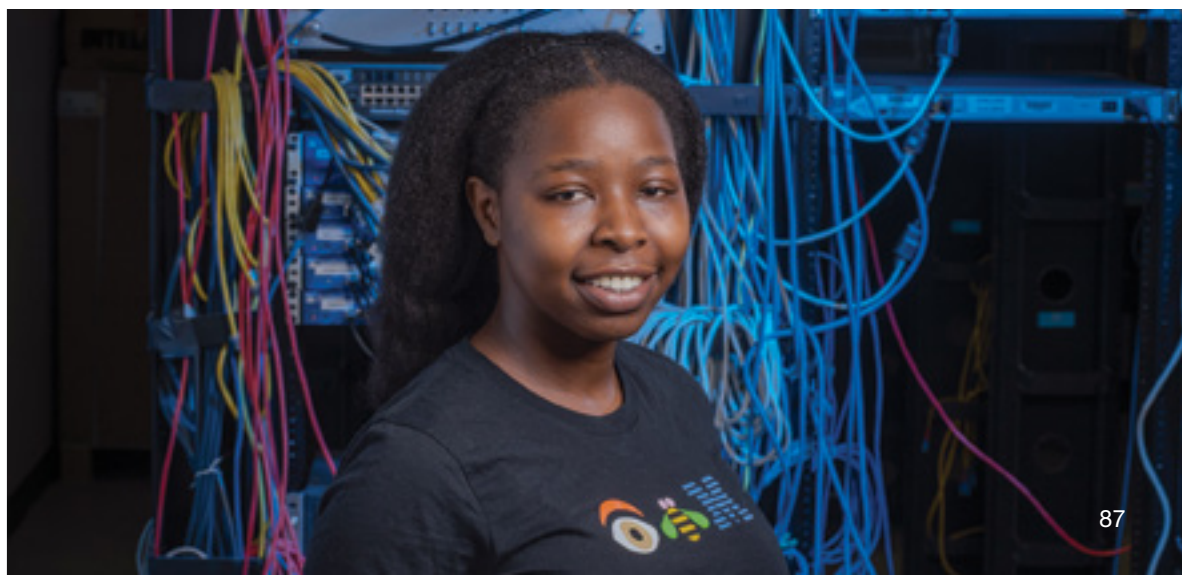
Sustainable Systems Engineering

Systems Engineering and Operations Research  
703-993-1670

📍 Nguyen Engineering Building, Room 2500

📞 703-993-1511 🏠 cec.gmu.edu

✉ cecugrad@gmu.edu



# ACADEMIC MINORS



## College of Education and Human Development

American Sign Language  
Assistive Technology  
Coaching  
Early Childhood Education  
for Diverse Learners  
Educational Psychology  
Event Technical Production  
Hospitality Management  
Kinesiology  
Mild Disabilities  
Personal Health and Wellness  
Recreation Management  
Severe Disabilities  
Sport and American Culture  
Sport and Computer Game Design  
Sport and Conflict Resolution  
Sport Communication  
Sport Management  
Sports Analytics  
Tourism and Events Management  
Visual Impairment and Blindness  
Wine and Craft Beverage Management



## College of Engineering and Computing

Aviation Flight Training and  
Management  
Bioengineering  
Computer Science  
Data Analysis  
Digital Media and Web Design  
Electrical and Computer Engineering  
Environmental Engineering  
Information Technology  
Mechanical Engineering  
Software Engineering  
Statistics  
STEM in Society  
Sustainable Systems Engineering  
Systems Engineering



## College of Humanities and Social Sciences

African and African American Studies  
Ancient History and Mediterranean  
Archaeology  
Anthropology  
Arabic  
Art History  
Asia-Pacific and Northeast Asian Studies  
Brain, Body, and Behavior  
Childhood Studies  
Chinese  
Classical Studies  
Clinical Psychology  
Communication  
Community and Public Writing  
Conservation Studies  
Criminology, Law and Society  
Design Thinking  
Developmental Psychology  
Digital Humanities  
Digital Media and Web Design  
Dynamic Publishing  
Economics  
English  
Ethics and AI  
Folklore and Mythology  
Forensic Psychology  
French  
German Studies  
Global Affairs  
Health, Disease, and Culture  
Health Communication  
Health Psychology  
History  
Human Development and Family  
Science  
Immigration Studies  
Industrial/Organizational Psychology  
Intelligence Studies  
Islamic Studies  
Italian Studies  
Japanese Studies  
Journalism  
Judaic Studies  
Korean Studies  
Latin American Studies  
Latin  
Leadership

LGBTQ Studies  
Linguistics  
Medieval Studies  
Middle East Studies  
Native American and Indigenous  
Studies  
Nonprofit Studies  
Philosophy  
Philosophy and Law  
Philosophy for Social Change  
Photojournalism  
Political Communication  
Political Philosophy  
Professional and Technical Writing  
Professional Experience in  
Communication  
Psychology  
Religious Studies  
Russian  
Screen Cultures  
Social Justice and Human Rights  
Sociology  
Spanish  
Sport and American Culture  
Sport Communication  
STEM in Society  
Sustainability Studies  
Teaching English as a Second  
Language  
Well-Being  
Women and Gender Studies



## College of Public Health

Aging Studies  
Food Systems  
Global Health  
Health and Social Policy  
Health Information Technology  
Health Systems Management  
Nutrition  
Physical Activity in Public Health  
Public Health  
Senior Housing Administration  
Social Work

# ACADEMIC MINORS



## College of Science

Astronomy  
Astrophysics  
Atmospheric Science  
Bioinformatics  
Biology  
Chemistry  
Computational and Data Sciences  
Conservation Biology  
Conservation Studies  
Design Thinking  
Earth Science  
Environmental Consulting  
Environmental Policy  
Environmental Science  
Forensic Science  
Geographic Information Systems  
Geography  
Geology  
Government Analytics  
Mathematics  
Mathematics for Costello College of  
Business Students  
Neuroscience  
Ocean and Estuarine Science  
Paleontology  
Physics  
Renewable Energy Interdisciplinary  
Science and Technology Policy  
Scientific Leadership and Practice  
STEM in Society  
Sustainability Studies  
Sustainable Enterprise  
Urban Informatics



## College of Visual and Performing Arts

Animation  
Arts and Social Change  
Arts Management  
Audio Production  
Computer Game Design  
Dance Appreciation  
Design and Technical Theater  
Digital Media and Web Design  
Dynamic Publishing  
Ethnomusicology  
Event Technical Production  
Film and Video Studies  
Global Dance  
Graphic Design  
Illustration  
Jazz Studies  
Music for Well-Being  
Music  
Music Pedagogy  
Music Technology  
Photography  
Photojournalism  
Sport and Computer Game Design  
Studio Art  
Theater  
Theater Performance  
Web Design



## Jimmy and Rosalynn Carter School for Peace and Conflict Resolution

Conflict Analysis and Resolution  
Organizational Conflict Resolution  
Peace Engineering  
Sport and Conflict Resolution



## Schar School of Policy and Government

American Government  
Global Systems  
Government Analytics  
International Security  
International/Comparative Studies  
Legal Studies  
Political Communication  
Public Policy and Management  
Urban and Suburban Studies



## Donald G. Costello College of Business

Business Analytics  
Business  
Energy Transition Management  
Entrepreneurship  
Finance  
Globally Responsible Business  
Practices  
Government Contracting  
International Business  
Management Information Systems  
Marketing  
Operations and Supply Chain  
Management  
Organizational Conflict Resolution  
Real Estate Development



# ACADEMIC ESSENTIALS







# MASON CORE

## What is the Mason Core?

Mason Core is Mason's general education program that builds the foundation for the Mason Graduate—an engaged citizen and well-rounded scholar who is prepared to act. Mason Core is a set of required courses that create the foundation of a student's undergraduate degree. It provides a breadth of liberal education courses, complementing the depth of knowledge and skills students build in their majors and minors.

## HOW IS MASON CORE CONNECTED TO YOUR MAJOR?

The courses taken in Mason Core will help develop the skills needed to achieve the learning required in all academic majors and prepare you for a career in your chosen field. Research has shown that most employers, regardless of the field, have high expectations that their college-educated employees will come to the workplace well prepared to write and speak clearly, think critically, and solve problems creatively. If you have not yet selected a major, Mason Core courses can help in choosing a major, while also beginning to develop the skills and habits of thinking that will stay with you throughout your life.

For more information about all Mason Core options, courses, and credits, visit the University Catalog at [catalog.gmu.edu](http://catalog.gmu.edu) or the Office of the Provost's website at [masoncore.gmu.edu](http://masoncore.gmu.edu).

## How is the Mason Core completed?

Mason Core begins in your first year at Mason, starting with the Foundation-level courses, which provide key skills needed for academic success. Exploration courses provide a breadth of learning across the university. Integration courses include upper-division courses, typically in your major. Academic advisors assist you in selecting Mason Core courses, which makes working with an advisor important to create the best possible Mason Core experience. It is critical that you continue to meet with your academic advisor as you continue toward graduation.

## Foundation Courses

### WRITTEN COMMUNICATION (LOWER) (3 CREDITS)

The first-year composition course (ENGH 101 or equivalent) is the first step in a three-course sequence to build your writing skills. This course develops your ability to use written communication as a means of discovering and expressing ideas and meaning. You will learn to use writing as a way of thinking by analyzing and responding to a variety of writing situations and genres that engage a range of audiences.

### ORAL COMMUNICATION (3 CREDITS)

Oral Communication focuses on developing your ability to create and deliver a variety of message types. You will learn to monitor and ethically practice your own verbal and nonverbal communication to become an effective communicator, demonstrating respect and consideration for the multitude of audiences with whom you will communicate in a range of intercultural, personal, and professional contexts. You will learn to use oral communication as a way of thinking and learning, as well as to share ideas.

### QUANTITATIVE REASONING (3 CREDITS)

Quantitative Reasoning courses develop critical thinking skills using mathematical and statistical concepts (i.e., formulas, graphs, tables, models, and schematics) to analyze and make sense of data, patterns, and relationships. By learning to evaluate problems using quantitative reasoning, you will be better equipped to make well-supported decisions in personal, academic, and workplace situations.

### INFORMATION TECHNOLOGY AND COMPUTING (3 CREDITS)

The purpose of the Information Technology and Computing requirement is to ensure that you achieve an essential understanding of information technology infrastructure encompassing systems and devices, learn to make the most of the web and other network resources, protect your digital data and devices, take advantage of the latest technologies, and become a more sophisticated technology user and consumer.

## Exploration Courses

### ARTS (3 CREDITS)

Through this category, you will develop an understanding of the relationship among artistic process, a work's underlying concept, and the social and cultural contexts associated with the work. Mason Core courses in filmmaking, visual, and performing arts stress generative, inquiry-based learning through hands-on experience in the studio environment. In art history courses, you will visually analyze artworks within a historical context, addressing the relationship between personal and cultural creativity.





### **GLOBAL CONTEXTS (3 CREDITS)**

The goal of the Global Contexts requirement is to enable you to explore global connections through a disciplinary lens and to understand how global systems have created both interdependence and inequalities that engaged citizens must understand in order to work toward an equitable and sustainable future.

### **GLOBAL HISTORY (3 CREDITS)**

By focusing on historical experiences that reflect the diversity of Mason's student body, you will be able to see how your family and community fit within, and contribute to, global history from the pre-modern period to our present day. The courses will offer a long-term historical perspective on structural issues challenging our world today, including demographic and environmental changes, national and global inequalities, and the underrepresentation of marginalized groups. You will gain an understanding of how interconnections and inter-dependencies have been forged through the global movement of people, pathogens, goods, and ideas.

### **LITERATURE (3 CREDITS)**

Courses in the Literature category develop your ability to read for comprehension, detail, and nuance; identify specific literary qualities of language as employed in texts you read; analyze the ways specific literary devices contribute to the meaning of a text; identify and evaluate the contribution of the social, political, historical, and cultural contexts in which a literary text is produced; and evaluate a critical argument in your own and others' writing.

### **NATURAL SCIENCE (7 CREDITS)**

Natural Science courses engage you in scientific exploration, foster your curiosity, enhance your enthusiasm for science, and enable you to apply scientific knowledge and reasoning to personal, professional, and public decision-making. At least one of the courses you take in this category must include a laboratory experience.

### **SOCIAL AND BEHAVIORAL SCIENCE (3 CREDITS)**

In this category, you will develop the ability to explain how individuals, groups, or institutions are influenced by contextual factors; demonstrate awareness of changes in social and cultural constructs; and use appropriate methods and resources to apply social and behavioral science concepts, terminology, principles, and theories in analysis of significant human issues, past or present.

### **JUST SOCIETIES (COURSES FLAGGED WITHIN EXPLORATION LEVEL)**

Exploration-level courses that are marked with a Just Societies "flag" are specifically designed to help you learn how to interact effectively with others from all walks of life, including those with backgrounds and beliefs that differ from your own. These courses focus on understanding key terms commonly used in society and the workplace today, engaging with your peers effectively while using these terms, and collaboratively identifying processes for change when warranted. If you are interested in gaining this type of additional knowledge and expanded skills, you are encouraged to work closely with your advisor to identify Exploration courses with these flags.

## Integration Courses

### WRITTEN COMMUNICATION (UPPER) (3 CREDITS)

Advanced Composition (ENGH 302), the second course in Mason's writing sequence, builds on learning in your first-year composition course (ENGH 101 or equivalent) through advanced rhetorical analysis, research, and writing oriented toward investigating, engaging with, and responding to meaningful disciplinary questions in a variety of academic and nonacademic contexts.

### WRITING-INTENSIVE COURSE REQUIREMENT (3 CREDITS)

Writing-Intensive (WI) Courses, which are taught within your chosen major, serve as the third course in Mason's integrated writing curriculum. Students use writing to investigate questions and discover new knowledge, develop and refine their thinking through interactive writing processes, and learn field-specific ways to communicate their discoveries to a range of audiences. Faculty devote significant class time to instruction on writing in the major and provide constructive feedback on student drafts. Students further refine the writing skills required to succeed in their chosen fields.

### MASON APEX (3 CREDITS)

The Mason Apex courses or, in some cases, sequence of courses will provide you with a high-impact culminating experience that requires you to utilize critical thinking skills and prepares you for lifelong learning. You will be challenged to draw connections across your Mason undergraduate academic experience. Mason Apex courses provide you opportunities to apply and communicate your knowledge, and involve integrative, applied, or experiential projects.

 [masoncore.gmu.edu](https://masoncore.gmu.edu)



## NOTES

[illegible]



# ACADEMIC PLANNING WORKSHEET

Name: \_\_\_\_\_ G-number: \_\_\_\_\_

To enhance your academic advising experience during Orientation, please take the time to review the Mason advising information in this handbook as well as online. Additionally, please complete this planning form to facilitate the exchange of information with your academic advisor.

**STEP 1:** Please tell us what major you are enrolled in or, if undecided, what major(s) you may be thinking about.

**STEP 2:** Review your academic transcript and let us know if there is any missing coursework (last semester classes, AP/IB, or other exams or courses):

TYPE OF CREDIT	AP/IB/CLEP OR COURSE	SCORE/GRADE	SCHOOL NAME	MASON EQUIVALENT
AP/IB/CLEP/Transfer				
AP/IB/CLEP/Transfer				
AP/IB/CLEP/Transfer				
AP/IB/CLEP/Transfer				
AP/IB/CLEP/Transfer				

**MASON CORE** is the university's general education requirement. It is equivalent to roughly one-third of your credits and is distributed among fundamental courses in writing, math, communication, and information technology, as well as those in the humanities, physical and biological sciences, social sciences, the arts, and more. The topic areas remain constant across majors, but students have the flexibility to select courses of interest from an approved list to complete each requirement. Additionally, these requirements may be met via transfer, AP, or IB credits. Many majors will have lower-level requirements specific to the degree that may also meet a Mason Core area requirement. For more specific information about Mason Core, please search "Mason Core" and/or review the Mason Core pages in your Orientation handbook.

**MAJOR REQUIREMENTS:** All majors have a set of required courses that are specific to that program. These courses range from lower-level courses appropriate for freshmen and sophomores to upper-level courses that are geared toward juniors and seniors. Some courses have prerequisites, which are a specific course or courses that must be taken first.

Additionally, some major requirements may also meet a Mason Core requirement.

**COLLEGE OR SCHOOL REQUIREMENT:** Certain colleges have a set of requirements that are unique to their majors. For instance, the College of Humanities and Social Sciences requires all their students completing a bachelor of arts degree to meet intermediate proficiency in a foreign language. These students are also asked to complete an additional social science course beyond the one needed to fulfill the Mason Core, a philosophy or religious studies course, and a non-Western culture course. Please check with your advisor to make sure that you meet the requirements specific to your college.

**ELECTIVES:** These are credits that don't meet a specific requirement, such as a Mason Core, major, or college requirement. They are credits that go toward those necessary to complete the minimum number of credits needed to graduate, typically 120, and may be lower- or upper-level credits. This could be individual courses or those courses going toward a minor. It is all dependent upon your degree. Check with your advisor.

MASON CORE	SATISFIED	1ST CHOICE	2ND CHOICE
Written Communication			
Oral Communication			
Quantitative Reasoning			
Information Technology and Computing			
Arts			
Global Contexts			
Global History			
Literature			
Natural Science Lab			
Natural Science (lab or not)			
Social and Behavioral Science			

**STEP 3:** Review your academic transcript and place an “X” in the satisfied column for any requirement(s) that you have met via AP, IB, or transfer credit. Once those requirements have been identified, review and select courses for your remaining Mason Core. Please identify more than one course for each area in the event you need an option beyond your first choice.

**STEP 4:** Review course descriptions and identify preferred courses in the spaces below. For minimum full-time status (12 credits) you will need approximately four classes. Your schedule should be a mix of Mason Core, major and/or college requirements, and exploration courses or electives.




## NOTES

[illegible]



# OFFICE OF THE UNIVERSITY REGISTRAR

Detailed information regarding the steps to registration and waitlisting can be found at [registrar.gmu.edu](http://registrar.gmu.edu). Before registering via Patriot Web ([patriotweb.gmu.edu](http://patriotweb.gmu.edu)), you will need to have accessed your Patriot Pass account and obtained a Mason username and secure password. If you have not yet done so, visit [password.gmu.edu](http://password.gmu.edu).

## What Can You Do Online?

The Office of the University Registrar website contains useful tools to assist you through the course registration process.

- **View the Academic Calendar** for specific **registration activities and dates** including the last day to add and drop a course at [registrar.gmu.edu/calendars](http://registrar.gmu.edu/calendars).
- **View the *University Catalog*** for specific university information on academic policies, tuition and fees, course offerings, and admissions and graduation requirements at [catalog.gmu.edu](http://catalog.gmu.edu).
- **View your time ticket** for registration on Patriot Web. Select “Student Services,” “Registration,” “Registration and Planning,” select a term, and then scroll down to view your time ticket.
- **Order an official transcript** at [registrar.gmu.edu/students/transcripts](http://registrar.gmu.edu/students/transcripts).
- **Order an Enrollment Verification** on Patriot Web. Select “Student Services,” “Student Records,” “Order Enrollment Verification,” and then “Submit Enrollment Verification Request.” You will be directed to the National Student Clearinghouse website. Choose “Current Enrollment,” “All Enrollment,” or “Advanced Registration.” Select “Obtain an Enrollment Verification.”
- **View your holds** on Patriot Web. Click “Student Services,” “Student Records,” and then “View Holds.”
- **View common registration error messages** at [registrar.gmu.edu/topics/common-registration-error-messages](http://registrar.gmu.edu/topics/common-registration-error-messages).
- **Learn about in-state tuition eligibility** and request a tuition reclassification at [registrar.gmu.edu/students/domicile](http://registrar.gmu.edu/students/domicile).
- **Submit the Veterans Registration Reporting Form (VRRF)** each semester to have classes certified for veteran education benefits.
- The Office of the University Registrar has many forms online. Visit [registrar.gmu.edu/forms](http://registrar.gmu.edu/forms) for a full list of all available forms.
- **View Patriot Web tutorials** at [go.gmu.edu/patriot-web-tutorials](http://go.gmu.edu/patriot-web-tutorials) to learn how to navigate Patriot Web and register for classes.

## Full-Time Student Classification

Full-time undergraduate students are classified as those students enrolled in 12 or more credits per semester. Completed hours are defined as a combination of all credits earned at the university plus credits transferred from other institutions or obtained by testing. Please note that different criteria for full-time status may apply for tuition, verification, and financial aid purposes.

CLASS CODE	COMPLETED CREDIT HOURS
Freshman	0-29
Sophomore	30-59
Junior	60-89
Senior	90 or more

## Graduation Information

### DEGREE EVALUATION

Mason’s degree evaluation system tracks your progress toward degree completion. Detailed information regarding the steps to access and understand your degree evaluation can be found at [registrar.gmu.edu/students/degree-evaluation](http://registrar.gmu.edu/students/degree-evaluation).

Questions about your degree evaluation should be directed to your academic advisor.

### GRADUATION

Graduation is not an automatic process. The first step is to view your Degree Evaluation on Patriot Web to ensure that all your degree requirements will be met by the conferral date. If you have questions about how courses are applied in your degree evaluation, you should contact your academic advisor. Apply to graduate on Patriot Web by the application deadline. Deadlines and other important information can be found at [registrar.gmu.edu/students/graduation](http://registrar.gmu.edu/students/graduation).

Check your Mason email regularly for important messages and be sure to complete the Student Exit Survey. The final graduation review to determine whether you have completed all degree requirements is conducted by the Registrar’s Office. Transcripts showing conferred degrees will be available after the conferral date as degrees are evaluated and posted. Diplomas will be mailed six to eight weeks after each conferral date.

 [registrar.gmu.edu](http://registrar.gmu.edu)

# MASON ONLINE

Did you know that any Mason student can take an online course? It's true! If you're currently a George Mason University student, then you can take online courses. There is no separate application process. Registration and financial aid work in the exact same way for your online and face-to-face courses. The instructors who teach online are the same instructors who teach face-to-face.

Whether you work, intern, commute, or live on campus, online courses offer an active and collaborative learning environment while allowing for greater flexibility in your academic schedule. For a full list of available online courses, visit [masononline.gmu.edu/courses](https://masononline.gmu.edu/courses).

To find out what technologies you will need and how to get started with online courses, visit [masononline.gmu.edu/online-learning-basics](https://masononline.gmu.edu/online-learning-basics).

## Online Learning Terminology

### DELIVERY MODE

What percentage of the course is delivered online?

**Hybrid online:** 51 to 99 percent of scheduled class time is online. The remaining class time is face-to-face.

**Fully online:** 100 percent of scheduled class time is online. Orientations, tests, exams, or labs may be face-to-face.

### INTERACTION MODE

When do the instructor and students interact?

**Synchronous:** Same time, different locations. All students join the instructor for scheduled online class meetings using teleconferencing tools like Blackboard Collaborate.

**Asynchronous:** Different times, different locations. All class instruction is available online with no set class meetings. Students still follow an established schedule of due dates.

## Earn a Degree Online

Mason currently offers more than 60 fully online and hybrid undergraduate and graduate programs! Online degree options include (but are not limited to)

### UNDERGRADUATE

Applied Science, Cybersecurity Concentration, BAS  
Applied Science, Health, Wellness, and Social Services Concentration, BAS  
Applied Science, Technology and Innovation Concentration, BAS  
Business, BS  
Computer Game Design, BFA  
Global Affairs, BA  
Health Administration, BS  
Information Technology, BS  
International Law and Security, BS  
Psychology, BS

### GRADUATE

Accounting, MS  
Applied Industrial and Organizational Psychology, MPS  
Applied Information Technology, MS  
Biodefense, MS  
Bioinformatics and Computational Biology, MS  
Business Administration, MBA  
Conflict Analysis and Resolution, MS  
Curriculum and Instruction, MEd  
Data Analytics Engineering, MS  
Economics, MA  
Education Leadership, MEd  
Family Nurse Practitioner Program, MSN  
Health Informatics, MS  
Health Systems Management, MHA  
Learning Design and Technology, MS  
Social Work, MSW  
Special Education, MEd  
Systems Engineering, MS  
Teaching English as a Second Language (Curriculum and Instruction, MEd)

For a full list of online programs, visit [masononline.gmu.edu/programs](https://masononline.gmu.edu/programs).

### CONTACT US

✉ [online@gmu.edu](mailto:online@gmu.edu) 🏠 [masononline.gmu.edu](https://masononline.gmu.edu)



# ACADEMIC ADVISING AT MASON

## Vision

Academic advising at George Mason University is an integral part of the educational process that enhances student learning and development by supporting, teaching, and connecting students to curricular and cocurricular experiences relevant to becoming an exemplary Mason graduate: an engaged, reflective citizen and well-rounded scholar who is prepared to act.

## Mission

The academic advising community at George Mason University commits to creating ongoing, personal, and purposeful educational partnerships with students and colleagues. Advisors contribute to student success by providing resources and by teaching students to develop the skills required to become lifelong learners capable of effective self-advocacy.

## Advisor Responsibilities

- Support students in setting and reaching educational goals.
- Teach students to engage in a process of self-reflection and self-discovery, guiding them to find degree pathways that match their interests, skills, and abilities.

- Connect students to campus resources and co-curricular opportunities to integrate learning and experience.

## Advisee Responsibilities

- Be responsible for understanding and reviewing academic and degree policies, regulations, and procedures.
- Use Degree Works to track your degree progress ([patriotweb.gmu.edu](http://patriotweb.gmu.edu)).
- Meet with an academic advisor each semester to discuss academic, educational, and career goals.
- Be responsible for knowing how to find important institutional and college policies.

Contact your academic advisor if you need additional assistance.

Advising at Mason is unique to each department. Students should contact their department to identify how advising is handled for their major. You may search for more information about advising and identify your academic advisor at [advising.gmu.edu](http://advising.gmu.edu).





# MASON ADVISING TIMELINE

## Before Classes Begin

- ☐ Familiarize yourself with the academic deadlines and calendar. Scan here to find the Academic Calendars.
- ☐ Confirm payment of your Mason account or establish a payment plan if necessary (A deadline exists and missing it could lead to the prevention/delay of future registration and late fees).
- ☐ Review degree and major requirements.
- ☐ Identify advisor contact information and reach out to address any questions.
- ☐ Identify your financial aid counselor, if applicable.
- ☐ Schedule math and foreign language placement testing if required.
- ☐ Submit final transcripts, vaccination records, and any other remaining documents. Transfer students who do not submit all prior college transcripts by the middle of their first semester at Mason will have a hold placed on their account preventing them from registering for second semester classes.



## First Month

- ☐ Meet with an advisor if you have questions or are experiencing any challenges.
- ☐ Attend Welcome Week events (connect with your major and students with similar interests).
- ☐ Familiarize yourself with academic policies (i.e., selective withdrawal, dropping courses, etc.).
- ☐ Familiarize yourself with academic support resources and opportunities (Learning Services, the Writing Center, math tutoring).
- ☐ Review all course syllabi for detailed and specific information. Also, identify instructors' contact hours. Notify them of any conflict with your schedule so that, if necessary, alternate arrangements can be made.
- ☐ Review your academic transcript for any previous coursework. If not posted by the end of the first month, please contact an advisor, complete the Transfer Credit Inquiry Form via [bit.ly/TransferCreditInquiryForm](https://bit.ly/TransferCreditInquiryForm), and submit it to [credeval@gmu.edu](mailto:credeval@gmu.edu).
- ☐ Get involved and connected on campus.

## Second Month

- ☐ See your advisor to discuss the current semester and begin planning for the next. Some advisors require appointments, others have walk-in advising, and some have a mix of both. Please know what your advisor or department requires so you can plan accordingly.
- ☐ Identify the selective withdrawal deadline.
- ☐ Review midterm grades (middle to end of month).
- ☐ Attend the Mason Career Fair.
- ☐ Take math or language placement tests if required, but not completed.

## Third Month

- ☐ Follow up with your advisor to clarify requirements, registration questions, or academic difficulty.
- ☐ Create an academic plan that outlines all your required classes until you graduate. If you need help, search Mason 4-Year Graduation Plans. Review it with your advisor.
- ☐ Review your next semester registration time ticket.
- ☐ Talk with your advisor about courses elsewhere if thinking about studying at another institution during the summer/winter. This action requires advance approval with specific deadlines.
- ☐ Address any holds on your account that may prevent registration.
- ☐ Register for classes as soon as your time ticket allows.

## Fourth Month

- ☐ Review the final exam schedule and discuss any conflicts with your instructor immediately.
- ☐ Discuss any academic concerns with your advisor and make sure you are registered for next semester.
- ☐ Prepare for and take your finals.

## After Finals/End of Semester

- ☐ Review all your grades and contact/email instructors immediately with any questions or concerns.
- ☐ Review next semester's registration and verify eligibility for courses based on any prerequisites that may not have been met.
- ☐ Review your academic standing and contact your advisor with any questions.
- ☐ Review next semester's academic calendar.

Search the following terms on **gmu.edu** for more information:

- Academic Advising
- Majors @ Mason
- *University Catalog*
- Mason Core
- Mason Career Center
- GetConnected
- Mason Four-Year Graduation Plans
- Learning Services
- Math tutoring
- Writing Center
- Counseling and Psychological Services
- Student Health Services
- Patriot Web
- Math placement test
- Foreign language placement test



# PLACEMENT TESTING

## Foreign Language

If you are pursuing a bachelor of arts degree in the College of Humanities and Social Sciences or the College of Science, you must prove intermediate proficiency in a foreign language. Some programs within the College of Visual and Performing Arts also have a language requirement. This requirement may be fulfilled by

- completing an intermediate 202 language course at Mason or the equivalent at another college or university,
- earning a qualifying score on one of the tests listed at [admissions.gmu.edu/exams](https://admissions.gmu.edu/exams), or
- taking the foreign language placement test offered by the Department of Modern and Classical Languages.

For more information on testing, visit [mcl.gmu.edu/placement-testing](https://mcl.gmu.edu/placement-testing) or call 703-993-1220.

The Department of Modern and Classical Languages offers language placement tests in Arabic, Chinese, French, German, Korean, Latin, Russian, and Spanish during Orientation.

Students interested in Italian and Japanese testing need to contact the MCL Department directly to make testing reservations. It is recommended that students with two or more years of experience with a foreign language take the corresponding placement test. Students with less than two years or no experience do not need to take the placement test and should instead enroll in a 110 or 115 language course. Students should take less than one hour to complete testing. All students should arrive with their photo identification and Mason G number.

## English

The English 101 Exam is a three-hour online optional skills assessment essay exam. Any admitted student who has not transferred equivalent credit from another university or has not taken ENGH 101 is eligible to take the exam. If you receive a pass, you will not be awarded credits but you will meet your ENGH 101 requirement. If you receive a no-pass, you will not be able to retake the exam and will be required to complete the course. Summer exam (given between May 1 and August 22) results will not be available until after the exam closing date and before the drop deadline for fall. There is no cost to take the exam and registration is required. Contact Stacey Remick-Simkins ([sremicks@gmu.edu](mailto:sremicks@gmu.edu) or 703-993-1162) for more information, or visit [composition.gmu.edu/waivers/engh-101](https://composition.gmu.edu/waivers/engh-101) for the schedule and registration process.

## English 302 Exemption Portfolio and Exam Option

The English 302 exemption involves a two-part process. Students must schedule a meeting with Jennifer Messier ([jjanisch@gmu.edu](mailto:jjanisch@gmu.edu)) before submitting a portfolio. If your portfolio receives a pass, you are required to complete the exam. You must pass the exam to meet the ENGH 302 requirement. You will not be awarded credits, but you will meet the ENGH 302 requirement for graduation. Prerequisites for submitting a portfolio include a minimum 3.00 cumulative GPA and completion of at least 30 credits (transferred or completed). Additionally, you must have your ENGH 100-level and literature requirements completed or transferred in at the time of submission. There is no cost. Contact Stacey Remick-Simkins ([sremicks@gmu.edu](mailto:sremicks@gmu.edu) or 703-993-1162) for more information. For portfolio requirements and information on the process, please visit [composition.gmu.edu/waivers/waiver-of-english-302](https://composition.gmu.edu/waivers/waiver-of-english-302).

## Math

Most Mason students, regardless of major, will need to take at least one math course to graduate; however, the math course required varies from major to major. Each initial math course has a prerequisite and requires a particular score on the math placement test to enroll. Therefore, most students need to take the math placement test. If you are not taking a math course in the fall semester, you do not need to take the placement test during Orientation. The test is offered during Orientation as a courtesy, but it is given throughout the academic year, as well as during the summer. Math placement test scores are valid for one year and must be attained before registering for the desired math course. We encourage you to talk to your advisor about whether you need to take the math placement test, as well as when it would be best for you to take it.

For more information, please visit [math.gmu.edu](https://math.gmu.edu).

## Reva and Sid Dewberry Family School of Music

The Reva and Sid Dewberry Family School of Music offers placement tests in theory, sight singing, ear training, and keyboard skills. These tests are optional for incoming freshman music majors but are required for incoming transfer students who plan to major in music. Prior notice to the School of Music is not necessary; you may simply show up and take the exams. These exams are only available the semester you enter Mason and cannot be scheduled for a later time. Exams are typically offered in August on the last Saturday prior to the start of fall classes. For full information on placement test scheduling, please visit the School of Music website, select "Academics," and then select "Advising."





**IT  
STARTS  
WITH  
YOU!**

# PATRIOT SUCCESS

Whether you are a freshman or a senior, keeping track of how you are doing in your college career is important. Taking this survey helps you identify programs and opportunities that interest you, and lets the Patriot Success team know if you need some additional support.

**For more information, visit [PatriotSuccess.gmu.edu](https://PatriotSuccess.gmu.edu).**



# STUDENT INFORMATION PRIVACY (FERPA)

The Family Educational Rights and Privacy Act of 1974 (FERPA) is a federal law that protects the privacy of student education records and restricts how and when their education records can be disclosed. Education Records are records directly related to a student that are maintained by George Mason University, or a party acting on behalf of the university. For additional information about FERPA, including the Annual Notification of Rights under FERPA, please visit [ferpa.gmu.edu](http://ferpa.gmu.edu).

## What Families Need to Know

The best way for families to stay involved and informed about their student's progress is to keep open lines of communication with their student. When a student attends a postsecondary institution such as Mason, educational records belong to the student and not the parent or family member. This means Mason students control access to all of their educational records and must provide written consent if parts of an educational record are to be disclosed to a third party, including parents or family members, unless the release is to the parent of a dependent student, as required by § 23.1-1303.B.5 of the Code of Virginia, or the disclosure meets a qualified exception under FERPA.

## GRADES

Mason does not mail grades to students or to families. Grades are available for students to view online through Patriot Web. Students can request an official transcript be sent to an address of their choice for a fee. Students may order their official transcript or print unofficial transcripts via Patriot Web.

## ACADEMIC ADVISING

In accordance with the FERPA law, school officials can speak only to a student regarding their record. An exception can be made in the instance of a student who wants to release portions of their educational record to a third party and has

submitted a Consent to Release Student Information (FERPA Form). This form is available on the Office of the University Registrar's website at [registrar.gmu.edu/forms](http://registrar.gmu.edu/forms). Be aware that consent remains in effect until revoked. To revoke a release, submit another Consent to Release Student Information (FERPA Form) and select "remove an existing release."

## FINANCIAL AID AND STUDENT ACCOUNTS

The Offices of Student Accounts and Financial Aid will speak to students at any time regarding their account; however, if the student would like either office to speak to a parent or family member, the student is required to submit a Consent to Release Student Information (FERPA Form), located on the Office of the University Registrar's website, at [registrar.gmu.edu/forms](http://registrar.gmu.edu/forms). Be aware that consent remains in effect until revoked. To revoke a release, submit another Consent to Release Student Information (FERPA Form) and select "remove an existing release."

## STUDENT CONDUCT

Educational records affiliated with the Office of Student Conduct are covered by FERPA and require a separate Privacy Waiver to authorize the discussion of a particular case or situation to someone other than the student, such as a family member.

A Privacy Waiver can be filed only by a student once a conduct situation arises; waivers cannot be submitted preemptively. The Privacy Waiver expires at the end of the particular case or situation for which it was signed, or a date of the student's choosing. The waiver can be found at [studentconduct.gmu.edu](http://studentconduct.gmu.edu) under the "Contact Us" tab.

The Office of the University Registrar can assist with FERPA-related questions. Contact [ferpa@gmu.edu](mailto:ferpa@gmu.edu) with questions or concerns.

# ACADEMIC RECORDS FAQ

## My transfer credits are not posted. What do I need to do?

The Office of Admissions evaluates transfer credit at the point students confirm their intent to enroll at Mason. Once you have signed up for Orientation, you should be able to view your Transfer Credit Evaluation under Student Records on Patriot Web. If credits are missing from your record, please first make sure you have submitted your final transcript and allow seven business days after the transcript has been received. If, after that time, no credits are posted, please contact **credeval@gmu.edu**. Please note that during the busy periods, like January and the summer months, evaluations may take longer. If some, but not all, credits have been posted and it has been more than seven business days since your transcript or document was received by Mason, please submit the Transfer Credit Inquiry Form to **credeval@gmu.edu**.

You can find the Transfer Credit Inquiry Form via [bit.ly/TransferCreditInquiryForm](http://bit.ly/TransferCreditInquiryForm).

## How can I change my name in university records?

To change your name, you must access **registrar.gmu.edu/forms** and choose the “Change of Personal Information” form. There, you can request a change or update to your name, birth date, or social security number.

## Can I get permission to take classes at another institution? What do I do after I have taken the class?

You should speak to your academic advisor for guidance before making a request for permission to enroll in a course at another institution. You will need to appeal to the academic dean’s office of the course in which you wish to enroll in elsewhere. The Request for Permission to Study Elsewhere form can be found at **registrar.gmu.edu/forms**. If the request is approved, the Office of the University Registrar must receive the form before the course begins. On course completion, an official transcript should be sent from the transfer institution directly to Mason via mail at George Mason University, Office of Admissions, 4400 University Drive, MS 3A4, Fairfax, VA 22030 or electronically to **ugtrans@gmu.edu**.

## How do I order a copy of my transcript?

Please visit **registrar.gmu.edu/records/transcripts** for steps on ordering your official transcript.

## How can I change my address in university records?

You may use Patriot Web to make any changes to your address. Visit **patriotweb.gmu.edu** and click on “Personal Information” to make any needed updates to your address.

## Why has my change of grade not been processed?

Please check your student email address for information regarding your case submission. If you have any additional questions regarding your request, please follow up with the instructor or the course department for additional assistance.

## How can I get a copy of a class syllabus?

To obtain course syllabi, you will need to contact the academic department.

## How can I get a copy of class descriptions from the previous year?

For recent academic years, this information can be found at **catalog.gmu.edu**. You can find this information for specific academic years by accessing **catalog.gmu.edu/archives**.

## How do I receive credit for AP, IB, CLEP, or high school dual enrollment coursework?

If you are eligible for AP, CLEP, IB, or high school dual enrollment transfer credit, official transcripts should be provided to the Office of Admissions during the application process. A complete list of transfer credit by exam is located at **gmuedu/freshman/requirements/exam-credit**. We highly recommend that you finalize all your transfer credit within the first academic year of enrollment at Mason.



# TRANSFER CREDIT INFORMATION

Transfer Credit Evaluations for first-year students are available on Patriot Web within approximately 10 days after the student submits their enrollment deposit and for transfer students within 10 days after an admission decision notification has been sent. Students will receive an email with instructions on how to access their evaluation.

All transfer students are responsible for providing a complete and final transcript from each previous institution to the Office of Admissions. A FINAL transcript is defined as the transcript that includes ALL coursework, ALL grades, and ALL degrees awarded from your previous institution. Re-admitted students will receive a new transfer credit evaluation based upon current transfer credit policy. A previous transfer credit evaluation will not be applicable to the new catalog year. The university reserves the right to revise a transfer credit evaluation.

## Things to Remember About Your Transfer Credit

- Transfer credit is granted only from institutions accredited by a **Mason-recognized\*** U.S. institutional accrediting agency or international equivalent with an earned grade of “C” or better.
- Developmental coursework does not transfer.
- Credits from institutions that operate on a quarter system calendar are transferred by multiplying the quarter hours by two-thirds in order to equal semester credits.

- Not all transfer credits will apply toward every major.
- If you are eligible for AP, CLEP, IB, or high school dual enrollment transfer credit, official transcripts should be sent directly from the organization, college, or university to Mason’s Office of Admissions at **ugtrans@gmu.edu** during the application process. A complete list of transfer credit by exam is located at **gmu.edu/freshman/requirements/exam-credit**.

## Important Recommendations

- All new transfer students are responsible for meeting with their academic advisor to ensure that their final transfer credit evaluation is correct and that they understand the way their transfer credit applies toward their degree program. Students should also ensure that they know how to run and read their individual degree evaluation.
- If you are missing credit or have questions about your credit, contact **credeval@gmu.edu**.
- To see the list of current course equivalencies, go to the transfer equivalency matrix at **admissions.gmu.edu/transfer/transferCreditSearch.asp**.

*Academic holds will be placed on all new transfer students who have not provided the required final transcript by the end of the add/drop deadline. An academic hold will prevent registration for the following semester.*

*\*You can find a list of Mason-recognized U.S. institutional accrediting agencies here: [gmu.edu/transfer/credits/accredited-universities](http://gmu.edu/transfer/credits/accredited-universities).*



# TRANSFER CREDIT EVALUATION WORKSHEET

TRANSFER EQUIVALENCY WORKSHEET			
Date: 11/2/23 3:32		George Mason University	
Student: Patriot, Mason	G#####	Fall 2024	Undergraduate
College: Engineering and Computing			
Major: Information Technology			
Program: BS Information Technology			
Mason Core Waiver: Lower-Level			

1. ADVANCED PLACEMENT EXAMS						
ATTENDANCE PERIOD		ATTENDANCE	EVALUATION			
1 SP18			6/4/19			
TRANSFER COURSES				MASON EQUIVALENT		
COURSE	TITLE	CR.HRS	GRD	COURSE	TITLE	CR.HRS
HIST UH 5	AP United States History	6	5	HIST 122	Development of Modern America	3
				HIST 121	Formatn of Amer Republic	

2. COLLEGE ABC						
Attendance Period		Attendance Dates	Eval. Date	Transfer Degree Awarded		
1 FA19-SU22		08/19/19-08/08/22	8/7/23	AS		
Transfer Courses				Mason Equivalent		
COURSE	TITLE	CR.HRS	GRD	COURSE	TITLE	CR.HRS
ITE 221	PC Hardware & OS Architecture	3		A		
ITN 100	Intro/Telecommunications	3	A	IT 105	IT Architecture Fundamentals	3
				IT ----	IT Elective	3
ART 100	Art Appreciation	3	A	ARTH 101	Intro to Visual Arts	3
CST 110	Intro to Communication	3	A	COMM 101	Interperson and Group Interact	3
ECO 201	Principles of Macroeconomics	3	B	ECON 104	Macroeconomic Principles	3
HIS 111	Hist of Wrld Civ I	3	A	HIST L387	Topics in Global History	3
HIS 121	U.S. History I	3	B	HIST 121	Formatn of Amer Republic	3
ITE 115	Intro Computer Appl/Concepts	3	B	IT 103	Intro to Computing	3
MTH 261	Applied Calculus I	3	B	MATH 108	Intro Calc:Business Applicatio	3
PHY 101	Intro to Physics I	4	B	PHYS 103	Princ/Devel Modern Phys	4
SDV 100	College Success Skills	1	A	UNIV 100	Freshman Transition	1

3. COLLEGE XYZ						
Attendance Period		Attendance Dates	Eval. Date			
1 FA19-SU22		08/19/19-08/08/22	8/7/23			
Transfer Courses				Mason Equivalent		
COURSE	TITLE	CR.HRS	GRD	COURSE	TITLE	CR.HRS
LA 248	Business Law	3	B	BULE ----	Business Elective	3
MKT 301	Princ of Marketing	3	C	MKTG 303	Principles of Marketing	3
PH 200	Intro to Philosophy	3	B	PHIL 100	Intro to Philosophy	3
TOTAL TRANSFER CREDIT HRS:		47.00		TOTAL MASON CREDIT HOURS:		47.00

NOTE: Some departments require a syllabus review prior to awarding transfer credit. Please refer to the Transfer Credit Policy posted on the university website for information on the acceptance of transfer credit and the appeal process. All transfer credit, including credit by exam, should be submitted to the Office of Admissions prior to the end of your first semester of enrollment. George Mason University reserves the right to modify a transfer credit evaluation at any time.



**#WELCOME2MASON**