

# Welcome to Orientation!

## Our Program Will Begin Shortly

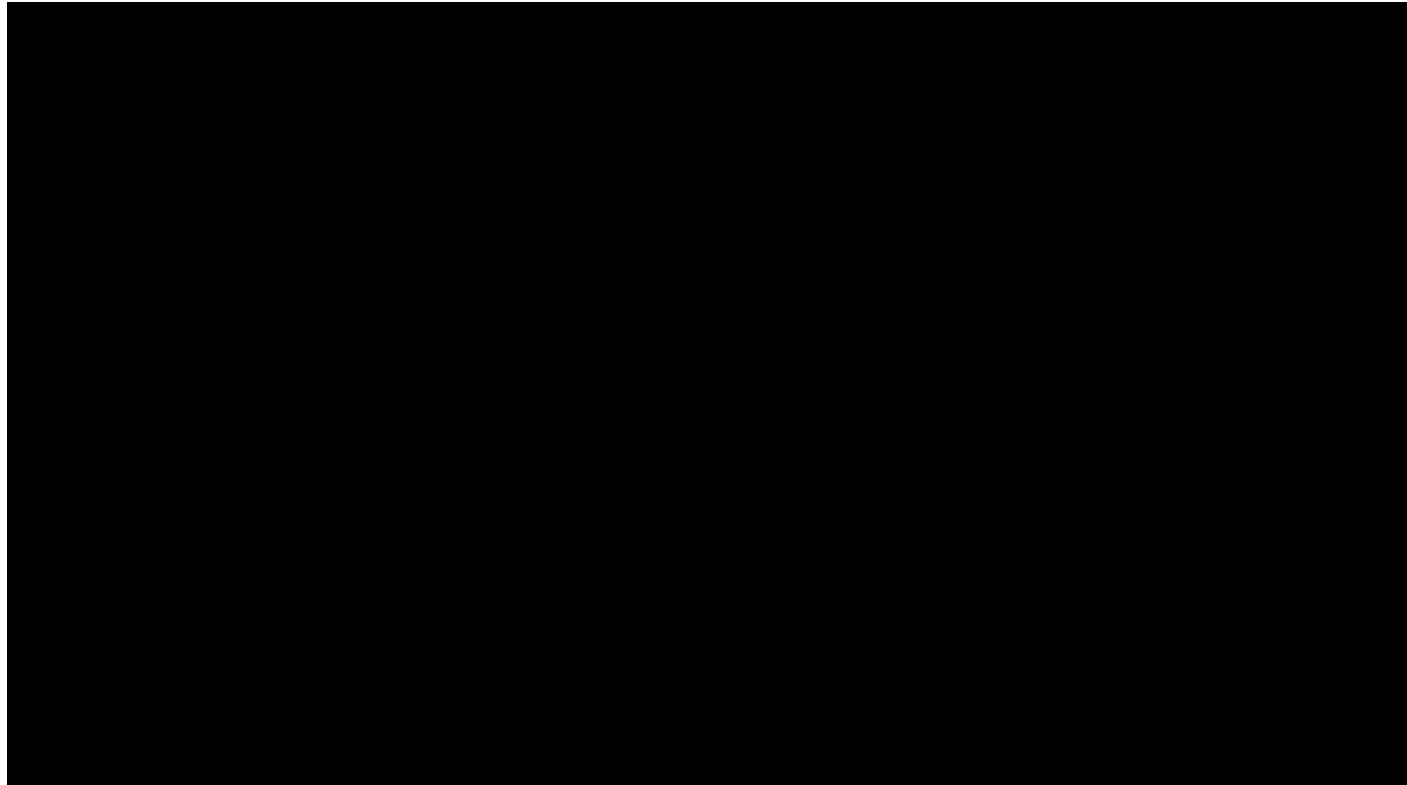


# Opening Remarks

Rick Gray, Director of New Student and Family Programs



# Land Acknowledgement Statement



---

# **Top Tips for Orientation & Becoming a PATRIOT**



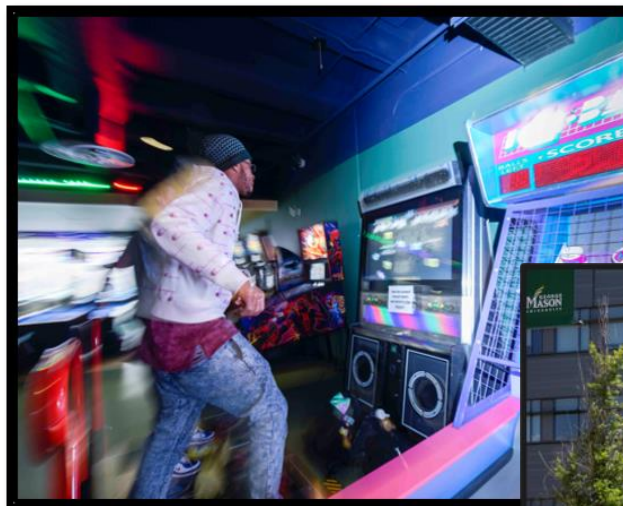
P

# Patriot Leaders



# A

## Activities



**Session Surveys**



# T

## Traditions



# R

## Register for Classes

### ACADEMIC PLANNING WORKSHEET

Name: \_\_\_\_\_ G-number: \_\_\_\_\_

To enhance your academic advising experience during Orientation, please take the time to review the George Mason advising information in this handbook as well as online. Additionally, please complete this planning form to facilitate the exchange of information with your academic advisor.

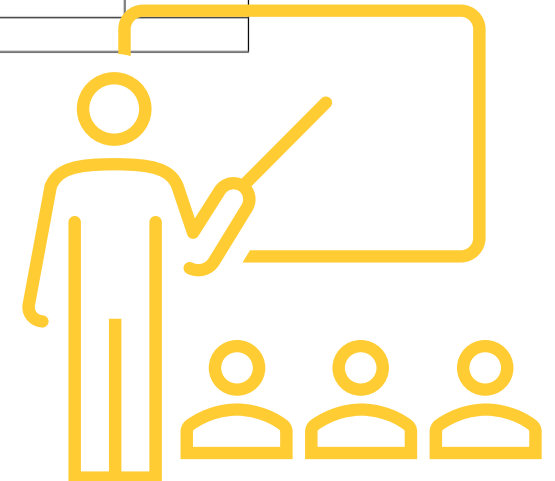
**STEP 1:** Please tell us what major you are enrolled in or, if undecided, what major(s) you may be thinking about.

---

---

**STEP 2:** Review your academic transcript and let us know if there is any missing coursework (last semester classes, AP/IB, or other exams or courses):

TYPE OF CREDIT	AP/IB/CLEP OR COURSE	SCORE/GRADE	SCHOOL NAME	GEORGE MASON EQUIVALENT
AP/IB/CLEP/Transfer				
AP/IB/CLEP/Transfer				
AP/IB/CLEP/Transfer				
AP/IB/CLEP/Transfer				
AP/IB/CLEP/Transfer				





# Institutional Policies



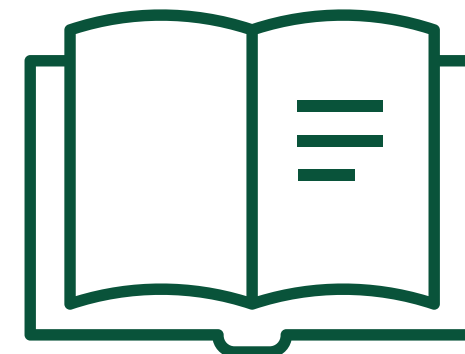
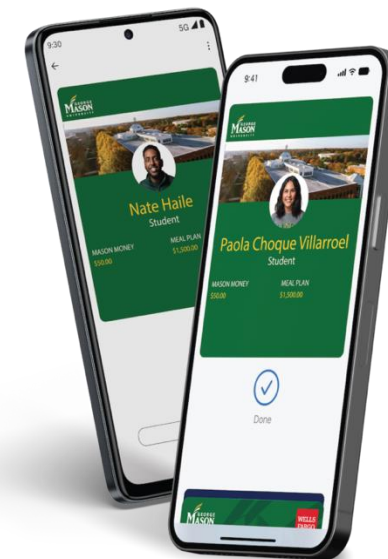
## FINAL STEPS TO BECOME A GEORGE MASON PATRIOT

Once you return home from Orientation, be sure to review these items and ensure you have completed all the final steps for success as a George Mason Patriot. Welcome to the Mason Nation!

- ❑ **Set up your George Mason email and Patriot Pass** if you have not done so already. Visit [mail.gmu.edu](mailto:mail.gmu.edu) for instructions.
- ❑ **Submit your final transcripts and test scores** to the Office of Admissions at [ugtrans@gmu.edu](mailto:ugtrans@gmu.edu).
- ❑ **Access financial aid information** on Patriot Web. Additional information can be found at [gmuedu/financial-aid](http://gmuedu/financial-aid).
- ❑ **Submit the George Mason Certificate of Immunization** by the required deadline. See page 35 for more information.
- ❑ **Review placement exam requirements** at [advising.gmu.edu/newstudent](http://advising.gmu.edu/newstudent).
- ❑ **Get your Mason ID.** Visit [masoncard.gmu.edu](http://masoncard.gmu.edu) to learn about your physical or mobile digital options.
- ❑ **Purchase a parking permit** at [parking.gmu.edu](http://parking.gmu.edu). Permits can be purchased after course registration is complete starting in July.
- ❑ **Plan for Move-In Day.** Find more information at [housing.gmu.edu](http://housing.gmu.edu). Find off-campus housing at [och.gmu.edu](http://och.gmu.edu).
- ❑ **Reserve copies of your textbooks** to rent or own through the campus bookstore at [gmubncollege.com](http://gmubncollege.com).
- ❑ **Attend the Preamble**, August 21–24, 2025. Open to all new students, freshmen, and transfers.
- ❑ **Plan your Welcome2Mason schedule.** For a list of events and a calendar, visit [welcome2mason.gmu.edu](http://welcome2mason.gmu.edu).
- ❑ **Take the CliftonStrengths Assessment** before classes begin by visiting [strengths.gmu.edu](http://strengths.gmu.edu).
- ❑ **Register for George Mason's Resilience Badge** at [wellbeing.gmu.edu/students/student-resilience-badge](http://wellbeing.gmu.edu/students/student-resilience-badge).

For help in navigating any other steps, feel free to contact New Student and Family Programs at [orientu@gmu.edu](mailto:orientu@gmu.edu) or 703-993-2475.

Scan here to access the new student orientation website.



# O

## Orientation Overview



**Register your  
Vehicle for  
Orientation  
Parking!**



T

Take risks  
and have  
fun!



# Welcome our Patriot Leaders!



**Hail to George Mason  
Don Your Green & Gold  
We're Going to Sing for George Mason,  
Patriots Brave & Bold!  
We're going to cheer (Woo!) for George Mason  
Proud for the World to See~  
We'll Prove Our Honor & Might  
And We'll Fight, Fight, Fight!  
As We March Onward to Victory**

**G...M...U...GMU Whaaat!**



# A Message from President Washington

