



ACADEMIC CALENDAR

FALL 2025	
First Day of Classes	Monday, August 25
Labor Day (University closed)	Monday, September 1
Last Day to Add (Census)	Tuesday, September 2
Last Day to Drop (100% refund)	Monday, September 8
Last Day to Drop (50% refund)	Tuesday, September 16
Unrestricted Withdrawal Period	Wednesday, September 17–Tuesday, September 30
Midterm Evaluation Period for Full Semester 100-200 Level Classes	Monday, September 22–Friday, October 17
Selective Withdrawal Period–Undergraduate Only	Wednesday, October 1–Monday, October 27
Fall Break (Classes do not meet)	Monday, October 13
Election Day (Classes do not meet)	Tuesday, November 4
Thanksgiving Recess	Wednesday, November 26–Sunday, November 30
Last Day of Class	Monday, December 8
Reading Day(s)	Tuesday, December 9
Examination Period	Wednesday, December 10–Wednesday, December 17
University Commencement	Thursday, December 18
SPRING 2026	
MLK Day (University closed)	Monday, January 19
First Day of Spring Classes	Tuesday, January 20
Last Day to Add (Census)	Tuesday, January 27
Last Day to Drop (100% refund)	Tuesday, February 3
Last Day to Drop (50% refund)	Tuesday, February 10
Unrestricted Withdrawal Period	Wednesday, February 11–Tuesday, February 24
Midterm Evaluation Period for Full Semester 100-200 Level Classes	Monday, February 16–Friday, March 20
Selective Withdrawal Period–Undergraduate Only	Wednesday, February 25–Monday, March 30
Spring Recess (Classes do not meet)	Monday, March 9–Sunday, March 15
Last Day of Class	Monday, May 4
Reading Day(s)	Tuesday, May 5 and Sunday, May 10
Examination Period	Wednesday, May 6–Wednesday, May 13
University Commencement	Thursday, May 14

University Services

Admissions

703-993-2000

Contemporary Student Services

masoncss@gmu.edu

Counseling and Psychological Services

703-993-2380

Disability Services

703-993-2474

Housing and Residence Life

703-993-2720

International Programs and Services

703-993-2970

Language Testing

703-993-1220

Mason Recreation

703-993-5323

Math Placement Testing

703-993-4237

New Student and Family Programs

703-993-2475

Student Accounts

703-993-2000

Student Financial Aid

703-993-2000

Student Health Services

703-993-2831

Student Services Center

703-993-2000

Student Success Coaching

703-993-2470

Student Support and Advocacy Center

703-993-3686

Campus Information and Visitor Services

703-993-1000

(Voice and Text)

Visit registrar.gmu.edu/calendars for the most up-to-date academic calendar or scan the QR code:





FINAL STEPS TO BECOME A GEORGE MASON PATRIOT

Once you return home from Orientation, be sure to review these items and ensure you have completed all the final steps for success as a George Mason Patriot. Welcome to the Mason Nation!

- ❑ **Set up your George Mason email and Patriot Pass** if you have not done so already. Visit mail.gmu.edu for instructions.
- ❑ **Submit your final transcripts and test scores** to the Office of Admissions at ugtrans@gmu.edu.
- ❑ **Access financial aid** information on Patriot Web. Additional information can be found at gmU.edu/financial-aid.
- ❑ **Submit the George Mason Certificate of Immunization** by the required deadline. See page 35 for more information.
- ❑ **Review placement exam requirements** at advising.gmu.edu/newstudent.
- ❑ **Get your Mason ID.** Visit masoncard.gmu.edu to learn about your physical or mobile digital options.
- ❑ **Purchase a parking permit** at parking.gmu.edu. Permits can be purchased after course registration is complete starting in July.
- ❑ **Plan for Move-In Day.** Find more information at housing.gmu.edu. Find off-campus housing at och.gmu.edu.
- ❑ **Reserve copies of your textbooks** to rent or own through the campus bookstore at gmU.bncollege.com.
- ❑ **Attend the Preamble**, August 21–24, 2025. Open to all new students, freshmen, and transfers.
- ❑ **Plan your Welcome2Mason schedule.** For a list of events and a calendar, visit welcome2mason.gmu.edu.
- ❑ **Take the CliftonStrengths Assessment** before classes begin by visiting strengths.gmu.edu.
- ❑ **Register for George Mason's Resilience Badge** at wellbeing.gmu.edu/students/student-resilience-badge

For help in navigating any other steps, feel free to contact New Student and Family Programs at orientu@gmu.edu or 703-993-2475.

Scan here to access the new student orientation website.



TABLE OF CONTENTS

New Student Resources

History and Traditions	6
Campus Events and Athletics	8
Navigating Fairfax and Washington, D.C.	10
New Student Programs	12
Student Success Coaching	14
Patriot Experience	15
Stay Connected as a George Mason Family	16
Get Involved	16
Come Back to Visit	17
Stay Informed	17
Connect with Us!	17
Parent and Family Council	18
Mason Family Connection	19
University Studies	20

Life at George Mason

University Life	24
Involvement and Engagement	25
George Mason's Regional Locations	25
Student Involvement	26
Center for Leadership and Intercultural Engagement (CLIE)	27
Student Media	28
Mason Recreation	29
Housing and Residence Life	30
Freedom of Expression at George Mason University	31
Belonging at George Mason	32
Contemporary Student Services	32
Office of International Programs and Services	32
LGBTQ+ Resources Center	33
First-Gen+ Center	33
Women and Gender Studies	33
Support Services	34
Counseling and Psychological Services	34
Student Health Services	34
Learning Services	36
Disability Services	36
Student Support and Advocacy Center	36

Student Rights and Responsibility	38
Code of Student Conduct	38
Academic Standards	38
Title IX	39
Meet the Patriot Leaders	40
Planning a Visit to George Mason	44
Handshake	45
Well-Being at George Mason	46
Mason Chooses Kindness	47
Libraries	48
Office of Student Creative Activities and Research (OSCAR)	49
Global Education Office	50
Smithsonian-Mason School of Conservation	51
Mason 360	52
Burnalong	53

University Services

Student Services Center	56
Student Accounts	57
Student Financial Aid	58
Information Technology Services	60
Shop Mason	62
Parking and Transportation	64
Mason Card Office	66
Mason Dining	67
Print and Mail Services	68
Bookstore and PatriotTech	70
Mason Arts	71
Fairfax Campus Map	72
George Mason Ready	74
Emergency Preparedness Training	75

The programs and services offered by George Mason University are open to all who seek them. George Mason does not discriminate on the basis of race, color, religion, ethnic national origin (including shared ancestry and/or ethnic characteristics), sex, disability, military status (including veteran status), sexual orientation, gender identity, gender expression, age, marital status, pregnancy status, genetic information, or any other characteristic protected by law. After an initial review of its policies and practices, the university affirms its commitment to meet all federal mandates as articulated in federal law, as well as recent executive orders and federal agency directives.

Academic Schools and Colleges

College of Education and Human Development . . .	78
College of Public Health	79
College of Humanities and Social Sciences.	80
College of Science	81
College of Visual and Performing Arts	82
Donald G. Costello College of Business.	83
Schar School of Policy and Government	84
School of Integrative Studies	85
Jimmy and Rosalynn Carter School for Peace and Conflict Resolution.	86
College of Engineering and Computing.	87
Academic Minors	88

Academic Essentials

Mason Core	92
Academic Planning Worksheet	96
Office of the University Registrar	99
Mason Online	100
Academic Advising at George Mason	101
George Mason Advising Timeline	102
Placement Testing	104
Patriot Success	105
Student Information Privacy (FERPA).	106
Academic Records FAQ	107
Transfer Credit Information	108
Transfer Credit Evaluation Worksheet	109





NEW STUDENT RESOURCES





HISTORY

GEORGE MASON'S STORY

1950S

1957

George Mason starts its journey as a two-year branch campus of the University of Virginia.



1960S

1964

George Mason College gets a permanent home in Fairfax.

1965

First Mason Day

1966

George Mason adopts green and gold as the official school colors.

George Mason College becomes a four-year college, though still a part of the University of Virginia.

1968

George Mason's first graduating class, which consists of 52 graduates, receives degrees.

1969

The Patriot is adopted as the official mascot.



1970S

1972

George Mason College separates from UVA and becomes George Mason University.

1977

George Mason changes from a commuter school to a residential university.

1979

Arlington Campus opens.



1980S

1981

First International Week

1985

The Patriot Center opens.

George Mason's women's soccer team wins the national championship.



1990S

1990

Center for the Arts opens.

1996

George Mason's track and field team wins division championship.

The George Mason statue is unveiled.

1997

Prince William Campus opens.



2000S

2004

George Mason releases the “Mason Star” athletics logo.

2006

George Mason’s men’s basketball team goes to the Final Four.



2010S

2013

George Mason joins the Atlantic 10 Conference.

Men’s soccer, women’s indoor and outdoor track and field, and George Mason baseball all win A-10 conference titles.

2015

The Patriot Center becomes EagleBank Arena.

Prince William Campus becomes the Science and Technology Campus.

2016

George Mason attains R1 very high research activity status.



2020S

2020

George Mason welcomes President Gregory Washington.

George Mason shifts to fully virtual operation during the COVID-19 pandemic.

2021

New academic building Horizon Hall opens for start of spring 2021 classes.

The Enslaved People of George Mason Memorial is installed on Wilkins Plaza.

2022

The Arlington Campus becomes Mason Square.

George Mason celebrates 50 years as an independent university.



The Fight Song—Onward to Victory

The George Mason University Fight Song has been around for more than 25 years, but it has largely been an instrumental tune. In 2009, the Green Machine bandleader Michael “Doc Nix” Nickens wrote the new fight song, “Onward to Victory.”

**HAIL TO
GEORGE MASON!**

**DON YOUR
GREEN AND GOLD!**

**WE'RE GOING TO SING FOR
GEORGE MASON,
PATRIOTS
BRAVE AND BOLD!**

**WE'RE GOING TO CHEER FOR
GEORGE MASON,
PROUD FOR THE WORLD TO SEE!**

**WE'LL PROVE OUR HONOR
AND MIGHT, AND WE'LL
FIGHT! FIGHT!
FIGHT!**

**AS WE MARCH ONWARD
TO VICTORY!**

**G! M! U! GMU! WHAAT!
GO GREEN! GO GOLD!
FIGHT! FIGHT! FIGHT!**



CAMPUS EVENTS

ANNUAL EVENTS HELD BY GEORGE MASON

9/11 DAY OF SERVICE SEPTEMBER



Fraternity and Sorority
Recruitment and Intake
Get Connected Fair
IVth Night
Transfer Nation

FAMILY WEEKEND OCTOBER

Mason Madness
Student Government Elections
Kings Dominion Haunt Trip



GOLD RUSH NOVEMBER



HIV/AIDS Awareness Fashion Show
Hunger and Homelessness
Action Week
First-Gen Week

HOMECOMING FEBRUARY

Black and African
Heritage Month
Winter Welcome2Mason



PRIDE WEEK MARCH



Geek Week
Kings Dominion Trip
Greek Week
Women's History Month

MASON DAY APRIL

International Week
Student Government Elections
Asian American Heritage Month



TRADITIONS

GENERATION TO GENERATION

- Find the class sign that matches the year you started at George Mason and add your name.
- Rub the toe of the George statue for good luck.
- Participate in Green and Gold Fridays.
- Take photos at the George statue.
- Avoid stepping on the plaque.
- Paint a student organization bench.
- Explore the old campus tunnels.
- Decorate the George statue.
- Decorate your cap for graduation!
- Paint the George Mason cubes.



ATHLETICS

NCAA, DIVISION I



- CROSS COUNTRY M/W
- BASKETBALL M/W
- TENNIS M/W
- SWIMMING AND DIVING M/W
- WRESTLING M
- TRACK AND FIELD M/W
- ROWING W
- BASEBALL/SOFTBALL M/W
- VOLLEYBALL W
- GOLF M
- LACROSSE W
- SOCCER M/W



NAVIGATING

FAIRFAX, VIRGINIA



New Student Bucket List

Indulge at the Fairfax Chocolate Lovers Festival in February.

Study with a friend and have coffee at De Clieu.

Experience the Community Farmer's Market.

Go hiking with some friends at Great Falls.

Go ice skating at the Fairfax Ice Arena.

Go shopping at Fair Oaks Mall.

Have lunch in Old Town Fairfax.

Sign up for an Outdoor Adventures trip.

Have a picnic at Burke Lake.

Attend the City of Fairfax Fall Festival in October.

Shop and Eat



Old Town Fairfax is filled with great restaurants, cafés, and stores! With options like Thai, Japanese, Mediterranean, and more, you will be able to find a place to eat that will leave everyone full and satisfied! Don't forget to check out patriotperks.gmu.edu to see where you get a discount in Fairfax and beyond!

Historic Fairfax



The City of Fairfax has a rich history. There are perfectly preserved historic buildings (including the site of the first fatality of the Civil War and a Civil War home featuring soldier graffiti) that many visitors find intriguing. The Fairfax Museum and Visitors Center is another fan favorite that everyone should check out!



NAVIGATING WASHINGTON, D.C.

Shop and Eat



The nation's capital is filled with history, monumental buildings, and striking landmarks, but it is also home to some of the greatest shops and restaurants around. From Indian, Creole, Mongolian, and Chinese, to traditional American cuisine, it can all be found in Washington, D.C. DuPont Circle, Union Station, U Street, and Chinatown are some fan favorite locations where you can experience delicious food and unique shops. Lastly, don't forget about the many tasty dessert locations the city has to offer.

The District of Columbia



The Smithsonian museums are free and open to the public every day of the year except Christmas Day. With 19 museums and galleries, you will be able to find something to keep you entertained, occupied, and educated. With our campus so close to D.C., you won't want to miss the opportunity to absorb the rich history and culture provided by the Smithsonian exhibits!

New Student Bucket List

- Ride the Metro into the city.
- Watch the Washington Commanders at Northwest Stadium.
- Visit the national monuments.
- Find the hidden George Mason statue.
- Go to a Nationals game.
- See the Smithsonian's ZooLights from November to January.
- Watch a free concert at the Yards Park.
- Celebrate the Cherry Blossom Festival in the spring.
- Enjoy a free performance at the Kennedy Center.
- Find a favorite food truck.
- Take a free tour of the White House or U.S. Capitol.
- Do a cupcake crawl in Georgetown.
- Go for a run on the National Mall.





NEW STUDENT PROGRAMS

WELCOME HOME, PATRIOTS!



New Student Bucket List

- Learn the fight song.
- Join or create an organization or club on campus.
- Play on an intramural sports team.
- Take a group fitness class at the AFC or RAC.
- Hang out at the Ridge.
- Try every dining hall on campus at least once.

The Preamble



August 21-24, 2025

Kick off your college experience at George Mason with the newest group of Patriots! There are a number of activities to help support your transition and first weekend on campus, such as the Opening Convocation in EagleBank Arena, social and academic programming, and the fall kick-off event. Visit welcome2mason.gmu.edu/thepreamble for more information.

Welcome2Mason



August 25—September 30, 2025

Join the rest of the George Mason community as we welcome new students to a new year. Welcome2Mason events span the first few weeks of the fall semester and provide countless opportunities for students to get involved, meet new people, and learn more about our beautiful campus. For a complete list of scheduled events, visit welcome2mason.gmu.edu. Signature events include Step Expo, George Mason Transfer Nation, academic department receptions, Involvement Fair and on-campus job fairs, "Ask Me" tents across campus, and other welcome activities.

First-Year Connections



Looking to meet new people, explore the Washington, D.C., area, and make the most of your first year at George Mason? **First-Year Connections** offers fun, meaningful opportunities to connect with fellow first-year students, engage with faculty and staff, and discover campus resources that support your success. From wellness activities and social gatherings to off-campus adventures, each event is designed to help students build community and feel at home. More details are available at fyc.gmu.edu.



Patriot Experience



Looking for a way to get connected to the campus community, while engaging in experiences related to well-being, career readiness, and global citizenship? Design your own George Mason experience through the Patriot Experience program! Patriot Experience is a great way to become involved on campus; network with faculty, staff, and your peers; increase leadership and critical thinking skills; and experience educational opportunities outside the classroom. Every fall, new students can participate in Patriot Experience's First Year Challenge, which encourages students to participate in at least 15 items within the Patriot Experience tracks and earn some great swag items. Follow Patriot Experience on Instagram (@PatriotExperience) and learn more about the program through Mason360!

New Student Bucket List

- Take a class in a subject you know nothing about.
- Go see a performance in the Center for the Arts.
- Visit the Presidents Park Greenhouse.
- Attend Mason Madness.
- Take the CliftonStrengths Assessment.
- Travel to a new country with the Global Education Office.
- Attend International Week events.



Success Coaches Are on the Journey with You!

Success Coaches discuss all aspects of a student's life that affects their overall well-being in a 45-60 minute appointment. The Success Coaching team helps students identify resources to enhance their Patriot experiences, and develop and implement personal, career, and academic goals.

Student Success Coaching helps students:

- Develop and set short- and long-term goals;
- Support skill building (e.g., time management, self-advocacy, boundary setting, etc.);
- Support overall well-being;
- Assist with action planning;
- Provide students feedback, support, and best practices to sustain goals and
- Support resource navigation.

All George Mason University students have access to a Success Coach and should meet with their Success Coach at least twice a semester to support their success journey.

Schedule an appointment through Patriot Connect to connect with your Success Coach today!



Success Coaches offer in-person and virtual appointments, scan below to find your Success Coach!



PATRIOT EXPERIENCE



OUR CORE TRACKS

ARE YOU A NEW OR RETURNING STUDENT AT GEORGE MASON? CHECK OUT PATRIOT EXPERIENCE!

MISSION

The Patriot Experience provides students with a focused approach to prepare for life after Mason by developing life skills through self-directed experiential learning.

VISION

The Patriot Experience adds intentionality to the student experience.

GLOBAL CITIZENSHIP

WELL-BEING

CAREER READINESS

Physical

Mental

Financial

Social

SCAN TO JOIN THE PATRIOT EXPERIENCE ON MASON360



Log into Mason360 and start completing Patriot Experience items today!

PATRIOT EXPERIENCE FIRST YEAR CHALLENGE



Looking to be more involved on campus?

Want to access campus resources that fit your needs and interests?

10 ITEMS
+ **15** WEEKS

= FREE PE SWAG

Participate in the First Year Challenge during your first year at George Mason!



TRANSFER TRACK

Exclusively for transfer students, the Transfer Track connects you to resources and services to support your success at George Mason.

Explore the Transfer Track in Mason360! To locate the Transfer Track, go to My Activity then My Checklists.

LEARN MORE AND STAY CONNECTED WITH US



masonpe@gmu.edu



@patriotexperience



coaching.gmu.edu/patriot experience

STAY CONNECTED AS A GEORGE MASON FAMILY

New Student and Family Programs (NSFP) recognizes the important role families play in their student's development and success at George Mason. NSFP serves as a liaison between the university and families and provides an outlet for families to become active members of the George Mason community through programming and outreach.

Take advantage of the following resources and stay connected to George Mason throughout the year!

Get Involved

PARENT AND FAMILY COUNCIL

The Parent and Family Council provides an opportunity for parents and families to meet with university leadership, volunteer at events, and become actively engaged and informed members of the George Mason community.

PARENT AND FAMILY FUND

The Parent and Family Fund offers parents and families the opportunity to play a role in building and shaping an exemplary educational experience for George Mason students. You can be part of every student's success by giving a gift of any size at any point throughout your student's time at George Mason.

FAMILY FAREWELL

All families are invited to attend Family Farewell on the same day(s) as First-Year Student Move-In prior to the start of the fall semester. Light refreshments will be provided after an exciting and emotional day of moving your student into their residence hall.

FAMILY SUPPORT SERIES

The Family Support Series is intended to help parents, families, and supporters understand how they can best support their student while at George Mason. Webinars are typically held in the evenings, last approximately one hour, and are recorded and made available following each session.





FAMILY WEEKEND

October 17–19, 2025

We encourage all families to join us for our annual university-wide celebration that takes place each fall. Events are designed to allow families to meet one another, become familiar with university resources, spend time with their student, and learn more about life as a George Mason Patriot!

Stay Informed

WEBSITE

If you have a question about George Mason and aren't sure where to start, visit masonfamily.gmu.edu and take advantage of the multitude of resources available for our George Mason families.

MASON FAMILY CONNECTION

Everything needed to make the most of your experience is within the Mason Family Connection at gmucampusesp.com. Find your community within our larger family network, customize the content and frequency you receive updates, and more.

WHERE TO STAY

Our website compiles local hotel options in the area for families and guests traveling to campus and seeking accommodations. Visit masonfamily.gmu.edu/resources/where-to-stay for more information and details on how to make a reservation directly.

WHAT GEORGE MASON FAMILIES ARE SAYING

Every semester, we survey families and ask about connection to George Mason, feelings of value as members of our community, and preferred methods and levels of communication and engagement.

- 80% feel connected to the university
- 81% feel the university values families as an important part of the community
- 80% feel communication and resources from the university are sufficient

Connect with Us!

✉ families@gmu.edu

☎ 703-993-2475

🏠 masonfamily.gmu.edu

🔗 Mason Family Connection (gmucampusesp.com)

📷 @masonnsfp

📘 /masonnsfp



University Life

**NEW STUDENT AND
FAMILY PROGRAMS**

George Mason University®



Meet the Parent and Family Council

The Parent and Family Council is a group of diverse, dedicated parent and family volunteers who serve as ambassadors for George Mason University among the parents and family members of undergraduate students and provide feedback to the Office of New Student and Family Programs on issues of particular interest to parents and families. The council meets two times each year to discuss issues; learn more about university developments affecting students; plan programs and events to involve parents and families in the life of the university; participate in broadening and deepening relationships in support of the university; and allocate finances through the Parent and Family Fund.

Expectations

- Attend the spring and fall meetings of the Parent and Family Council
- Participate in a minimum of two volunteer opportunities throughout the year
- Serve on one council committee
- Provide input and ideas at meetings and on a regular basis, and contribute knowledge of your student's experience to help inform practices
- Represent the interests of all George Mason families and serve as an ambassador, working to engage other parents and families in supporting University efforts

Benefits of joining the Parent and Family Council

- Meet two times a year with university leadership to hear first-hand, timely news and information about George Mason
- Attend Family Weekend annually free of charge
- Receive council-branded apparel and name badge to wear while volunteering
- Featured on the Family Programs website at MasonFamily.gmu.edu/Parent-and-Family-Council

For more information on the council, please visit our council membership page at bit.ly/GMUPAFCMembership.

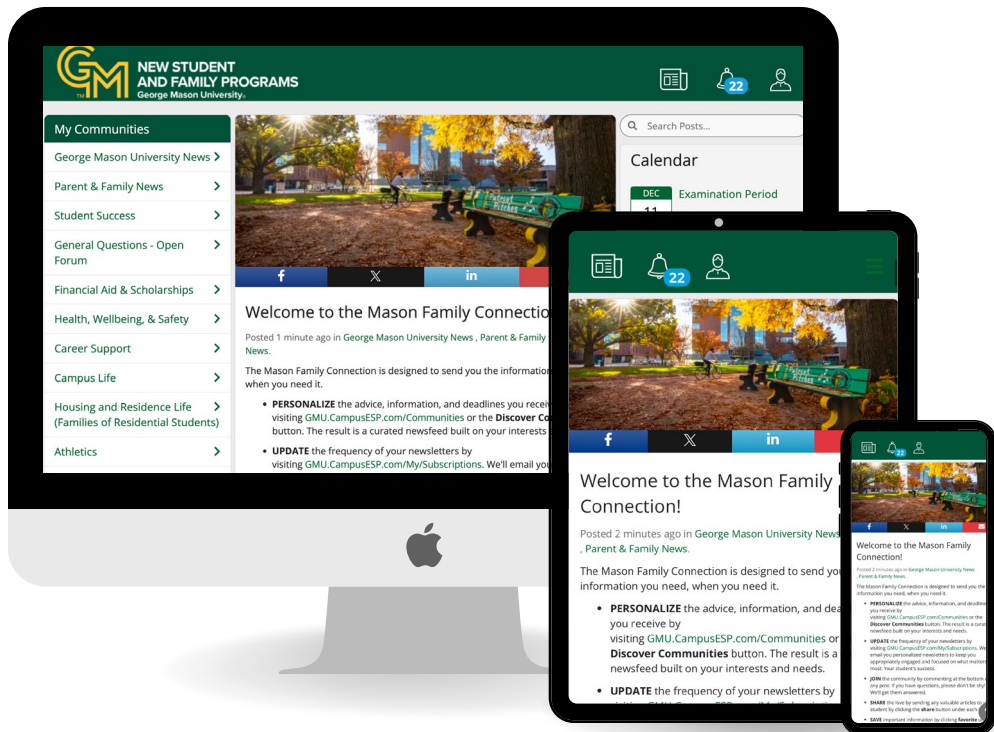


University Life
**NEW STUDENT AND
 FAMILY PROGRAMS**
 George Mason University®



A way to stay involved with your student and George Mason.

Access for George Mason families sponsored by New Student and Family Programs.



Your one-stop shop for:



Access to important campus news and deadlines



Personalized newsletters on your schedule



Announcements via email



Sharing of content with friends and family



University Studies

New to George Mason University?

Take UNIV 100 - Intro to George Mason

Learn:

- How college works, and build skills!
- Tips and resources for academic, career and personal success
- All about what George Mason has to offer!

Connect with:

- Peers and faculty
- Campus offices and opportunities
- Job and internship venues

Transfer Student?

UNIV 300 - Transfer Transition

Designed for transfer student success!

**Make the most out of college.
Start George Mason right!**

The Right Start!

UNIV 100 and 300:

Discussion-based, student-oriented, fun, 1-credit elective developed for students new to Mason.

No exams!

**REGISTER DURING
ORIENTATION ON
PATRIOT WEB!**

Speak with your academic advisor about which course is right for you.



univ@gmu.edu



703-993-3794



www.univstudies.gmu.edu



**GEORGE MASON
UNIVERSITY®**

NOTES

[illegible]



A young woman with dark hair is smiling at the camera. She is holding a bright yellow t-shirt with a green geometric pattern. She is also holding a white t-shirt with green lettering that says "ON" and "Y". She has a green drawstring bag and a black bag with white polka dots. The background shows a crowd of people at an outdoor event, possibly a fair or festival, with trees and a building visible in the distance.

LIFE AT GEORGE MASON



UNIVERSITY LIFE

University Life (UL) cares for the whole student by promoting inclusive well-being and fostering lifelong learning to prepare ethical leaders for the world.

Our four strategic goals and accompanying strategies serve as guideposts for all UL professional staff and the more than 1,000 undergraduate and graduate student assistants over the next four years in delivering an exceptional student experience where **every student succeeds**.

The University Life Mission

To engage students in educationally purposeful experiences resulting in student learning and development, academic success, and degree completion. We do so by:

1. Fostering self-discovery and teaching students to navigate transitions throughout their George Mason experience.
2. Engaging our diverse, global, and multicultural community to enrich the educational environment, promote mutual respect and civility, and develop global citizens.

3. Empowering students to be socially conscious leaders and promoting democratic and civic engagement.
4. Educating students about individual and community responsibility and holding them accountable for ethical practices, academic integrity, and high standards of personal conduct.
5. Promoting wellness, healthy lifestyle choices, and a culture of safety.
6. Creating opportunities and communities for student involvement and engagement with peers, faculty, staff, and administrators.
7. Embodying lifelong learning.

 ulife.gmu.edu

INVOLVEMENT AND ENGAGEMENT

George Mason's Regional Locations

MASON SQUARE

Mason Square, in the Virginia Square neighborhood of Arlington County near Washington, D.C., focuses on graduate and professional programs, with growing undergraduate offerings in the College of Engineering and Computing. It offers graduate degrees in law, peace and conflict resolution, policy, business, arts management, executive and professional education, and more. Mason Square is also home to the Institute for Digital Innovation and Mason Enterprise Center—Arlington. Available campus resources include a podcast studio, library, and a full range of University Life services. Open study lounges and a computer lab are available for student use. Mason Square is accessible via campus shuttle and is within walking distance of the Virginia Square—GMU Metro Station on the Orange Line.

🏠 masonsquare.gmu.edu

SCIENCE AND TECHNOLOGY CAMPUS

George Mason's Science and Technology Campus in Manassas is in Innovation Park, the largest research business park in Northern Virginia, home to technology companies and government agencies conducting cutting-edge research. The campus hosts select courses in applied information technology, advanced biomedical science, criminology, education, kinesiology, mechanical engineering, and more. It is also home to the 300-seat Verizon Auditorium, the Freedom Aquatic and Fitness Center, the George Mason Center for Team and Organizational Learning (The EDGE),

the Hylton Performing Arts Center, the Institute for Biohealth Innovation, the Biomedical Research Laboratory, the Life Sciences and Engineering Building, and Beacon Hall (graduate student housing). This campus is also accessible via campus shuttle.

🏠 scitechcampus.gmu.edu

MASON KOREA

Located 25 miles from Seoul in Songdo, South Korea, Mason Korea currently offers undergraduate programs in business, computational and data sciences, computer game design, conflict analysis and resolution, economics, and global affairs; graduate programs in computational science (master of science) and law (master of laws); and supports all Mason Core requirements. The campus includes state-of-the-art teaching facilities, performing arts centers, and student housing. To learn more about how you can study abroad at Mason Korea, visit the website.

🏠 masonkorea.gmu.edu/us

SMITHSONIAN-MASON SCHOOL OF CONSERVATION

Offering residential, hands-on, interdisciplinary programs in conservation biology for undergraduate and graduate students on the grounds of the Smithsonian Conservation Biology Institute in Front Royal, Virginia, learn how you can spend a semester at the Smithsonian-Mason School of Conservation by visiting the website.

🏠 smconservation.gmu.edu



Student Involvement

We help students get connected to the Mason Nation through campuswide events, student organizations, trainings, student advocacy, and personal interactions to bring ideas to fruition, create a sense of belonging, and prepare students for success in their future.

REGISTERED STUDENT ORGANIZATIONS

With more than 500 Registered Student Organizations (RSOs), George Mason opens up endless ways to get involved. From holding cultural events and lectures to expos and conferences, these student-led groups bring campus to life. Whether you want to connect, lead, or explore new interests, there's a place for you! Check out mason360.gmu.edu for a complete list.

STUDENT GOVERNMENT

Student Government (SG) is the voice of undergraduate George Mason students, advocating for student needs and enhancing campus life. There are plenty of ways to get involved in SG and make an impact during your time at George Mason University!

FRATERNITY AND SORORITY LIFE

Fraternity and Sorority Life (FSL) at George Mason is a vibrant community of more than 1,000 members across 40+ national and international organizations. Beyond creating chances for lifelong bonds, our chapters elevate campus life through service, leadership, and social events. With a commitment to excellence, FSL fosters academic success, networking, and unforgettable experiences.

PATRIOT ACTIVITIES COUNCIL

The Patriot Activities Council (PAC) brings the fun to George Mason with exciting, low- or no-cost events like concerts, carnivals, and trips to local attractions. Whether you're looking to meet new friends, make unforgettable memories, or help plan the next big event, PAC is your go-to for entertainment and campus connections!

STUDENT INVOLVEMENT MARKETING TEAM

The Student Involvement Marketing Team promotes student involvement events, traditions, and initiatives through creative and engaging marketing strategies. Our team develops career-ready skills in public speaking, innovation, and marketing while encouraging student participation and campus involvement.

GEORGE MASON UNIVERSITY ESPORTS

George Mason University Esports (GMU Esports), a Student Involvement organization, is the ultimate hub for gaming and competition on campus. We cultivate a vibrant community where students connect, compete, and level up their skills. From collegiate esports teams to casual gaming events and tournaments, we create unforgettable experiences for all gamers. To find out more, join our discord: discord.gg/gmuesports.

📍 The Hub, Suite 2300 📞 703-993-2909 🏠 si.gmu.edu
✉️ @MasonPatriots 📺 MasonInvolvement





Center for Leadership and Intercultural Engagement

The Center for Leadership and Intercultural Engagement (CLIE) is dedicated to fostering holistic growth, intercultural awareness, and leadership development. CLIE provides students of all backgrounds with opportunities to engage in meaningful dialogue, explore their identities, and navigate various cultural and social environments.

Through workshops, programs, courses, mentoring, advising, and service, CLIE empowers students to become effective, ethical leaders who understand themselves, interact empathetically with others, and create a legacy of positive change. Whether through leadership training, heritage programs, or community-building initiatives, CLIE supports students in developing a strong sense of self, cultivating global competencies, and preparing for success in an interconnected world. We provide a variety of opportunities throughout the year; one example is our dialogue across difference programs.

BUILDING BRIDGES THROUGH DIALOGUE

CLIE fosters spaces for open, meaningful conversations that connect people across different perspectives. Through dialogue, active listening, and shared understanding, we empower individuals to engage in challenging discussions, find common ground, and lead with empathy. We are committed to fostering a community where diverse voices come together to create positive change! Some of our dialogue across difference programs include:

- A Braver Campus Series
- Community-Driven Heritage Programs
- Bridging Differences, Increasing Understanding

- Creating Community
- Engaged Citizens
- The Intercultural Development Inventory (IDI)
- Right, Wrong, or Different Discussions
- Voices in Motion

GET INVOLVED WITH CLIE!

Looking to grow as a leader and make a difference? Your ideas, creativity, and expertise can help shape impactful programs and workshops that foster leadership, humanity, and global connections. Gain hands-on experience, develop key skills, and contribute to a more engaging campus. No matter your passion—social change, community building, or personal growth—there's a place for you here. Be part of something bigger and help create a lasting impact!

STAY CONNECTED!

For a complete listing of the programs and services we provide, be sure to follow us on Instagram (@mason_clie) or check out our website at clie.gmu.edu.

📍 The Hub, Suite 2400 📍 SUB I, Suite 2400
 🏠 clie.gmu.edu 📷 @mason_clie



Student Media

Student Media's mission is empowering students to exercise their First Amendment rights and creativity through creating works that inform, enrich, and entertain the George Mason community. Writer, editor, photographer, videographer, anchor, DJ, designer, peer reviewer, director, and producer are just a few of the roles students can explore when they get involved.

With more than 10 unique publications and media groups that include George Mason's official student newspaper (*Fourth Estate*), radio station (WGMU), and television network (Mason Cable Network), we offer a wide variety of opportunities to apply academic concepts beyond the classroom and build practical skills that can open up new career pathways. We meet students where they are and offer hands-on training to help them find success and enhance their resume.

We are always looking for talented students to join our dynamic team! Become an audience member, attend an event, join a media group's staff, or submit your original works for publication consideration.

HOW DO I GET INVOLVED?

Visit our office in the lower level of The Hub, Room 1201, or fill out our interest form online at c2ms.info/osmapply.

WHY STUDENT MEDIA?

- Be creative.
- Meet great people.
- Build skills to add to your resume.
- Get your original work published.
- Gain practical hands-on experience.
- Work in a professional and fun environment.

1-CREDIT COCURRICULAR COURSES

- COMM 145/345 Newspaper Workshop I and II
- COMM 148/348 Radio Workshop I and II
- COMM 347 Cable TV Programming and Marketing

Each course can be repeated for credit up to three times!

PICK UP A PUBLICATION

Get your copy of our latest print publications at one of our literature racks around campus or visit our office in The Hub, Room 1201.

Student Media

☎ 703-993-9745 ✉ stumedia@gmu.edu

🏠 studentmedia.gmu.edu 📱📺📷📺 @gmustudentmedia

Mason Recreation

Mason Recreation inspires an inclusive atmosphere that fosters lifelong well-being for the university's diverse students and community through active experiences, education, and engagement.

We offer three state-of-the-art recreation facilities for the university and surrounding community: the Aquatic and Fitness Center, the Recreation and Athletic Complex (RAC), and Skyline Fitness Center. Membership is free for all full-time students. Part-time students may activate their membership at any of our three facilities for a small fee.

AQUATICS

If you enjoy the water, the Aquatic and Fitness Center is the place for you. Relax in our recreation pool or swim a few laps in our Olympic-size competition pool. Fun activities to watch for are our Dive In Movies, Aqua Aerobics, Key Log Rolling, and Splash Night held during Welcome2Mason each fall. Those looking for instructional/certification courses will find lifeguard certification, swim lessons, and CPR/AED/First Aid offerings.

FITNESS

Each of our facilities is fully equipped to support all of your fitness needs, including cardio equipment, free weights, squat racks, benches, and much more! Are group workouts more your style? We have more than 30 group fitness classes each week, including Zumba, yoga, Pilates, cycling, capoeira, tai chi, boot camp, HIIT, and more. All classes are perfect for people of all fitness levels. Do you have fitness goals? Let our certified personal trainers help you get to where you want to be. Remember, our friendly staff is always here to guide you on your fitness journey!

INTRAMURAL SPORTS

Intramural Sports offers students the opportunity to compete in recreational and competitive sports leagues and special events on campus. We have the usual favorites like flag football, basketball, volleyball, and soccer, but don't forget about table tennis, e-sports, cricket, and kickball!

BURNALONG

BurnAlong with George Mason and Feed Your Flame! BurnAlong provides free, on-demand virtual health, wellness, and fitness resources to help you stay motivated and focused on empowering your well-being. Find out more at fit.burnalong.com/gmu.



CLUB SPORTS

Club Sports offers students looking for something more competitive a chance to compete and represent George Mason on a local, regional, and national level. With 30+ clubs, there is something for everyone. Club teams are student-led organizations and provide a great opportunity for individuals who are looking for leadership and development opportunities. If we do not offer the club you are looking for, simply contact our office to begin the application process and start your own.

OUTDOOR ADVENTURES

Enjoy the great outdoors by participating in trips conducted most weekends throughout the fall and spring semesters. Outdoor Adventures also offers a variety of equipment to rent if you wish to embark on your own trip. The Outdoor Adventures office is located in the Skyline Fitness Center, adjacent to the Southside dining hall.

THE EDGE

The EDGE provides hands-on experiential learning programs that offer cutting-edge team development activities and workshops. This program features a challenge course, Alpine climbing tower, and a mobile program. If your club, class, or group is looking to develop and grow as leaders, book a program with the EDGE today!

WELL-BEING

There is no time like the present to empower your well-being! We provide a variety of engaging well-being programs for Patriots, including our Now What? learning series, Leading through Reading book discussions, and Fun Fridays at the RAC. Our educational well-being resources include Voices of Well-Being, Let's Eat Healthy series, and our Monthly Awareness Topics.

📞 703-993-5323 🏠 recreation.gmu.edu

📱 @GeorgeMasonRec

Housing and Residence Life

Welcome, Patriots! This is an exciting time in your journey, and we are thrilled to be a part of it! Housing and Residence Life is home to more than 6,000 students. With so many students calling George Mason home, you'll have abundant opportunities to connect with your peers and our diverse university community.

Every first-year first-time residential student is required to reside on campus and will have the opportunity to live in a Residential Learning Community (RLC). These communities consist of three different categories—academic, identity, and interest based—and are located in specific buildings and floors. Residential Learning Communities allow you to live and learn alongside other students who share a common passion, major, or identity in an environment tailored to that topic. Students living in our RLCs will have opportunities to engage with academic faculty and staff outside of the classroom in a variety of activities. Our RLCs help make a big campus feel smaller and can connect you to your peers as well as faculty and staff members who are invested in your success. On your housing application you can apply for your top RLC choice and you will be accepted based on your application, answers, and space availability.

Students who live on campus have convenient access to numerous dining options, Fenwick Library, multiple recreation facilities, a wealth of study spaces, and so much more! Our Housing and Residence Life staff are committed to ensuring you have a successful transition to George Mason. From community events to one-on-one conversations, we are here to provide support and activities along the way. With opportunities and resources like these, we are confident George Mason will feel like home in no time.

In order to foster the community built within RLCs, each one is located on a specific floor(s) and building. Those who have been accepted into a Residential Learning Community will have the opportunity to connect with those who are also accepted into the same RLC through roommate grouping. This process will allow all students to meet other students in their community through the Housing Portal to find a roommate to live with! All students will have the opportunity to connect and match with future roommates in late May. Students should continue to check their George Mason emails as well as the housing website, **housing.gmu.edu**, throughout the summer for information on move-in dates and times.

Our residence halls open on Wednesday, August 20, 2025, for all incoming first-year students. All students will be assigned a specific move-in time. Move-in details will be posted on the Housing and Residence Life website beginning July 1. In addition to the housing website, be sure to check your George Mason email and the Housing Portal throughout the summer for further instructions.

Students living on campus have the opportunity to join the Residence Hall Association (RHA) as a way to advocate for and create the experience they want in the residence halls. Students can serve as officers and as neighborhood representatives. Students can talk to their resident assistant for more information.

To help prepare you for the year ahead, be sure to mark these important dates on your calendar!

- First-Year Move-In: August 20–21
- Upper Level Move-In: August 22–24
- Thanksgiving Break: November 26–30 (all residence halls remain open)
- Winter Break Closing: December 17 at 5 p.m. (Residents will need to apply for Winter Break Housing to retain access to their space.)
- Residence Halls Open for Spring 2026: January 16
- Spring Break 2026: March 9–15 (all residence halls remain open)
- Residence Halls Close: May 13, 2026, at 5 p.m.

We hope you are as excited to be at George Mason as we are to have you join our community! Be a part of the conversation on our social media channels or visit our website for more information.

☎ 703-993-2720

🏠 housing.gmu.edu ✉ housing@gmu.edu

✉️ [f](#) [i](#) [@MasonHousing](#)

FREEDOM OF EXPRESSION AT GEORGE MASON UNIVERSITY

At George Mason University we include and embrace a multitude of people and ideas in everything we do and protect the freedom of all members of our community to seek truth and express their views. Freedom of expression in an intellectually and culturally diverse environment provides all members of our community the opportunity to learn, grow, and contribute to our shared mission to create a more just, free, and prosperous world. George Mason University is committed to protecting free speech and free expression on its campus and in its education programs.

Being exposed to competing perspectives is essential for questioning our assumptions, testing our beliefs, and refining our knowledge. Our goal as a community must be to create an environment where we can engage in difficult and challenging conversations with civility and mutual respect, where confronting opposing ideas and perspectives becomes an opportunity to learn from and with each other.

Our commitment to freedom of expression is not incompatible with our commitment to diversity and to nurturing a positive and collaborative environment where everyone can thrive. On the contrary, it is by achieving the latter that freedom of expression becomes a powerful tool for personal learning and growth. But our efforts to build a civil and respectful environment cannot be used as reasons to limit the rights of others to express views that we may consider misguided or even offensive. As articulated by a 2014 report from the University of Chicago, we must hold a fundamental commitment to “the principle that debate or deliberation may not be suppressed because the ideas put forth are thought by some or even by most members of the university community to be offensive, unwise, immoral, or wrongheaded.”

George Mason facilities are intended primarily for the use of its students, faculty, and employees in their efforts to advance the educational mission of the university. No use shall be permitted that is unlawful, threatens the safety of the George Mason community, or is inconsistent with the mission of the university. In maintaining a safe campus, in which its students, faculty, and employees can advance the educational

mission of George Mason without disruption, the university may establish constitutionally permissible time, place, and manner restrictions on the use of its facilities and property (e.g., registration requirements, times when use is permitted, limitations on amplified sound). These can be found in University Policies 1103, 1109, 1140, and other applicable policies and procedures. These policies and procedures ensure that George Mason can focus on its educational mission, provide a safe environment for learning, and preserve the aesthetics of its campus.

The campus community is encouraged to participate in all university-sponsored programs and activities. Members of the George Mason community maintain the right to criticize and contest speech they disagree with, whether by members of the George Mason community or outside speakers who are invited to the campus. But freedom of expression does not permit disrupting or preventing another person's ability to speak or hindering the ability of others to see or hear that speech. The First Amendment protects the right to peacefully protest, demonstrate, and speak in opposition to others' speech, as long as it does not impede the constitutionally protected speech of others.

All members of the George Mason University community enjoy the right to freedom of speech and expression. Individuals are encouraged to speak, write, listen, challenge, and demonstrate as a natural platform for intellectual engagement. This is the true spirit of freedom and learning.

If you would like additional information about George Mason policies related to speech and expression, you can visit gmU.edu/1stAmendment. If you believe your freedom of speech or expression has been disrupted, you may report an incident of disruption of constitutionally protected speech by selecting the “Submit a Report” button on that web page. You can also visit campusclimate.gmU.edu for more information about speech, expression, and other campus climate topics at George Mason.



BELONGING AT GEORGE MASON

Contemporary Student Services

At George Mason, Contemporary Students include adult learners, transfer students, student-parents and caregivers, off-campus students, military- and veteran-connected students, foster care alumni, and other post-traditional students.

Contemporary Student Services (CSS) advocates, celebrates, educates, and serves. We offer resources, peer support, and social opportunities to specifically meet the needs of contemporary college students and those transitioning to off-campus living.

🏠 contemporary.gmu.edu

CONTEMPORARY STUDENT LOUNGE

Stop by our Contemporary Student Lounge in room 1012 of The Hub. You will always find welcoming folks, free coffee and tea, opportunities to make new friends or simply relax and study, and our kid-friendly Kids Zone. Our Contemporary Student Peer Mentors also work out of the lounge.

Monday–Thursday, 10 a.m.–7 p.m.

Friday, 10 a.m.–2 p.m.

OPPORTUNITIES FOR CONTEMPORARY STUDENTS

- Campus and community resources for parenting, pregnant, transfer, and all contemporary students
- Contemporary Student Advisory Board: Open to all contemporary students to share your experiences, provide leadership within the community, and amplify the voices of students
- University Studies (UNIV) course sections specifically for contemporary students: UNIV 100 is for off-campus students, UNIV 300 is for transfer students to support their transition to George Mason, and BIS 301 is a course to support adult learners as they transition to George Mason
- Peer mentors and professional staff to support self-advocacy and help with any questions about George Mason life on and off campus
- Social opportunities geared toward specific student population identity groups

Signature events and programs include:

- Preamble Events: An opportunity to get to know campus and connect with fellow contemporary students
- Trunk or Treat: A service opportunity for all students and a fun day of fall festivities for student-parents, caregivers, and area families. Sign up to decorate a trunk or bring your junior Patriots!
- Monthly Community Meet-Ups: Monthly meet-ups for transfer students, adult learners, and student-parents and caregivers

- Contemporary Student Appreciation Week: A week of educational and fun programming
- Contemporary Student Graduation Celebration: A celebration acknowledging the accomplishments of our contemporary student graduates

OFF-CAMPUS HOUSING

CSS supports students looking for off-campus housing by hosting an online housing locator at och.gmu.edu that includes a roommate finder restricted to the George Mason community. The site also includes resources like our Off-Campus Housing Handbook.

📍 The Hub, Room 1012, Contemporary Student Lounge

🏠 contemporary.gmu.edu @mason_css

✉ masoncss@gmu.edu

Office of International Programs and Services (OIPS)

Our mission is to educate, celebrate, and serve.

We connect members of the George Mason community to foster friendships, celebrate each other's cultures, explore global issues and themes, and promote learning beyond the classroom. Additionally, we provide immigration advising, endorse immigration documents, and recommend and approve immigration benefits for international students, faculty, and exchange visitors. For immigration questions and concerns, you can meet with OIPS advisors during walk-in hours or schedule an appointment.

OIPS-sponsored events and programs are primarily organized by students for students and offer excellent opportunities to enhance your understanding of the world through personal interaction. Signature events and programs include:

- **International Buddy Program:** Aims to build cross-cultural friendships between George Mason's international and domestic students by fostering mutual appreciation for cultures different from their own through a variety of campus events and activities
- **International Café:** An opportunity offered multiple times a semester for students to showcase various countries and cultures
- **International Education Week (November):** A weeklong multicultural exchange with specific educational objectives
- **International Week (March/April):** A weeklong celebration of George Mason's diverse and international cultures

📍 SUB I, Suite 4300 ✉ oips@gmu.edu 🏠 oips.gmu.edu

🌐 Mason International ✉ @OIPSMason @MasonOIPS

LGBTQ+ RESOURCES CENTER

The LGBTQ+ Resources Center cultivates the success, retention, and well-being of George Mason students. Our work is deeply collaborative and rooted in intersectional approaches. We build identity-affirming programs, develop leaders, provide critical resources, and foster a culture of meaningful community and allyship at George Mason.

- LGBTQ+ Peer Mentoring Program
- LGBTQ+ Residential Learning Community
- Safe Zone+ Program

📍 SUB I, Room 2200
 📞 703-993-2702 🏠 lgbtq.gmu.edu
 📘 Mason LGBTQ+ Resources
 📷 @gmu.lgbtq

FIRST-GEN+ CENTER

The First-Gen+ Center supports all students who are historically underrepresented in higher education and their allies. It specifically centers college students who identify as first generation, who identify as undocumented, who have refugee status, and whose families have limited income.

Are you first-gen? Our department defines first-generation students as a college student whose parent(s) and/or legal guardians did not receive or complete a bachelor's degree within the United States. Even if you have an older sibling or cousins who attended college, you are still first-gen. We offer a variety of programs throughout the year:

- First-Gen Week (National First-Gen Day is November 8)
- First-Gen Pinning Ceremony for graduating students
- I AM FIRST Podcast
- First-Gen+ Resource Guide
- First-Gen Faculty and Staff List
- One-on-one meetings with full-time staff
- Student Transition Empowerment Program (STEP)
- UndocuAlly Training
- Every Campus a Refuge Training

📍 SUB I, Suite 2400 🏠 firstgen.gmu.edu
 ✉ firstgen@gmu.edu 📘 📷 📷 @masonfgpc

WOMEN AND GENDER STUDIES

The Women and Gender Studies Center raises awareness of issues related to women, gender, race, and sexuality, and fosters an intersectional approach to the student experience at George Mason. The center is a cocurricular program providing learning opportunities through programming, events, activism, and courses through a feminist lens.

The center is located in Room 240K of the Johnson Center and is open to all students to come study, rest, hang out, have lunch, or just to nap for a few minutes between classes.

Women and Gender Studies maintains a dual program of academics and University Life through signature events such as World AIDS Day, Sojourner Truth Lecture, and Women's History Month in collaboration with various campus departments.

📍 Johnson Center, Room 240K 🏠 wmst.gmu.edu
 📘 MasonWGST 📷 @MasonWGST 📷 @mason_wgst

SUPPORT SERVICES

Counseling and Psychological Services

George Mason University's Counseling and Psychological Services (CAPS) provides free and confidential services to George Mason students. The range of services offered includes:

- Individual and group counseling
- Psychiatric services
- Outreach events
- Skills-based workshops
- Psychological referral services
- Peer educators
- Consultation with faculty, staff, parents, and friends

All students enrolled in classes at George Mason are eligible for services. During the the initial check-in appointment, the counselor will speak with you briefly to obtain information on your current mental health needs and determine next steps for your care. Students are referred to services based on their concerns to help promote psychological health and academic success.

Students may use CAPS to address a variety of concerns, including managing anxiety, depression, grief, and/or anger; personal, family, and relationship concerns; traumatic experiences; difficulty with alcohol, other substances, or food; sexual identity; race/ethnicity, culture, and diversity; and attaining educational and academic goals.

Services are provided by a staff of professional clinical psychologists, counselors, social workers, doctoral-level trainees, and psychiatric providers. For students who need more intensive services, we offer referrals to community-based providers and facilitate successful connections with these resources.

In addition to working directly with students, CAPS provides consultation to faculty, staff, parents, and friends who may be concerned about another student. By speaking with an on-call clinician, individuals can gain information and support about how they might approach and address issues with the student of concern. Refer to the Student Support and Advocacy Center section in this guide (page 36) for information on how to make a referral for students of concern.

📍 SUB I, Suite 3129 📞 703-993-2380

🏠 caps.gmu.edu

Student Health Services

Student Health Services is staffed by dedicated doctors, nurse practitioners, and nurses who provide easily accessible and affordable health care to all enrolled students in a caring and confidential environment. We offer a wide variety of services to keep our George Mason community healthy.

SERVICES

- Treatment of illness and injury
- Health and wellness counseling
- Immunizations and flu shots
- Laboratory tests
- Sexually transmitted infection (STI) testing and treatment
- Help quitting smoking or tobacco
- Travel clinic
- Allergy clinic
- Screening and treatment for mental health concerns
- Nutrition counseling
- Physical health exams
- Basic gynecological care, pap tests
- Pregnancy testing and counseling
- Contraceptive education and prescriptions, emergency contraception
- Video telehealth and in-person visits

There is no charge to be seen by one of our health care providers. There are fees for lab tests, medications, immunizations, supplies, and some procedures.

Students do not need health insurance to be seen at Student Health Services.

To make an appointment, call or schedule online. There are often same-day appointments available for students with acute care needs.

📍 Fairfax: SUB I, Room 2300 📞 703-993-2831

📍 Mason Square: Van Metre Hall, Room B102

📍 Science and Technology: Colgan Hall, Room 229

📞 After Hours Nurse Advice Line: 703-993-2831

🏠 shs.gmu.edu

TIMELYCARE

Patriots have free 24/7 access to TimelyCare, a high-quality, virtual mental health platform. You can access TimelyCare services 365 days a year—that means access during breaks, after hours, and any time you need support!

Free for Students

Available 24/7, 365 Days a Year

To learn more, visit: ulife.gmu.edu/timely-care.

STUDENT HEALTH INSURANCE PLAN

George Mason University offers a student health insurance plan and a dental plan, which are available to eligible undergraduate and graduate students who would like to purchase health insurance. Students with a plan can purchase coverage for eligible dependents.

🏠 shs.gmu.edu/insurance

TIPS FOR INCOMING STUDENTS

- Turn in your immunization records early to ensure you have met the requirements.
- If you have health insurance, check with your insurance provider about coverage in the Northern Virginia area. Keep your insurance card or a copy with you.
- Do you have a chronic medical condition? Talk with your doctor about how to care for yourself at George Mason. Consider scheduling a new patient appointment with Student Health.
- Know your personal and family medical history and if you have any allergies. These are common questions if you seek health care.
- Bring your medications and prescriptions with you. Have a plan for any refills and understand what your medication is for.
- Pack a first-aid kit. A few items can ensure you are prepared for basic self-care.
- Under 18? Have your parent/guardian sign the minor consent on the Certificate of Immunization.

IMMUNIZATION REQUIREMENTS

All newly admitted students and re-admitted students must complete the George Mason Certificate of Immunization and submit the form and any supporting documents to the Immunization Office before the deadline. Upload the form to the Patient Portal.

Immunization Record Deadlines

Deadlines vary for fall and spring semesters. Check the website for dates.

Students must complete the student sections and a health care provider must complete the remaining sections of the Certificate of Immunization. If a student is not able to provide appropriate documentation, immunizations and/or titers are available for a fee.

Students can check their immunization status in the Patient Portal.

A late fee will be charged and a hold will be placed on the student's Patriot Web account if immunization records or documentation are incomplete. This may delay future class registration.

🏠 shs.gmu.edu/immunizations



Learning Services

Learning Services assists George Mason students in achieving their academic goals. Many students find that learning and studying at George Mason is different than what they were accustomed to in high school or in community college. The staff provides a variety of free services to empower students to help them study effectively, manage assignments, and prepare for tests.

ACADEMIC COACHING

Peer Academic Coaches are available to meet with students to discuss their academic goals, develop study plans, and learn new study strategies. Coaches are trained and supervised by a Learning Specialist. Make an appointment online at learningservices.gmu.edu.

ACADEMIC SUCCESS WORKSHOPS

Workshops on a wide variety of academic strategies are offered each week throughout the academic year. Space is limited, so students are encouraged to register in advance. Topics include time management, procrastination, reading strategies, exam strategies, and improving concentration, to name a few.

ONLINE MEDIA LIBRARY

Videos on adjusting to college, motivation, goal setting, and critical thinking are available online.

KNACK TUTORING

George Mason University is partnering with Knack, a peer-to-peer tutoring platform, to provide access to high-level tutoring services for select courses each semester. These tutors are current George Mason students who have previously succeeded in the same courses, and the tutoring is free for our students. Visit gmujoinknack.com to learn more.

TUTORING RESOURCES

A list of campus-based tutoring resources is available at learningservices.gmu.edu/tutoring-resources2.

📍 SUB I, Suite 3600 📞 703-993-2999

🏠 learningservices.gmu.edu

Disability Services

Disability Services will help to transform George Mason University into an inclusive and accessible university where programs, services, and environments are accessible by all people. We will do this by

- Promoting equitable access for students with disabilities in all activities within the university experience
- Fostering partnerships with students, faculty, and staff to create an accessible, diverse, and inclusive community
- Increasing inclusivity within the university community for individuals who identify with the disability community

Disability Services provides long- and short-term academic, nonacademic, housing, and meal plan accommodations for George Mason students. To register with Disability Services, students must complete the following steps:

- Complete and submit the intake form.
- Submit any appropriate impairment, condition, or disability documentation. In the event that a student does not have documentation, they may contact Disability Services to discuss the next steps.
- Participate in an interactive initial meeting to discuss accommodations.

Contact Disability Services directly with questions or concerns.

📍 SUB I, Suite 2500

📞 703-993-2474 📧 ods@gmu.edu 🏠 ds.gmu.edu

Student Support and Advocacy Center

The Student Support and Advocacy Center (SSAC) is committed to providing an empowering environment for all George Mason students to seek support services and to explore healthy life choices. We offer educational programming, one-on-one consultations, and resources in the areas of sexual and interpersonal violence, financial well-being, substance use, and collegiate recovery. We assist students encountering barriers to personal success.

SSAC provides the following services:

- Intervention with students encountering personal challenges that prevent them from achieving their academic and personal goals;
- Confidential support for students who have been affected by sexual and interpersonal violence (sexual assault, domestic or partner violence, sexual harassment, stalking, etc.);
- Education for students addressing their use of alcohol and other drugs;
- Campuswide training and education on bystander engagement, healthy relationships, financial well-being, and substance use;
- Operation of the Patriot Pantry and emergency meal vouchers supporting students who face food insecurity; and
- 24-Hour Sexual and Intimate Partner Violence Crisis Line (703-380-1434) for students in crisis seeking support related to sexual and interpersonal violence.

Students seeking to connect with a center staff member, and individuals referring students about whom they are concerned, should do so via SSAC's website at ssac.gmu.edu by clicking the "Request Support and Make Referrals" tab.

📍 SUB I, Suite 3200 📞 703-993-3686 🏠 ssac.gmu.edu

NOTES

STUDENT RIGHTS AND RESPONSIBILITY



Code of Student Conduct

What is the Code of Student Conduct?

Do you know what is expected of a George Mason University Patriot? With independence comes responsibility.

The Office of Student Conduct hosts the Code of Student Conduct that outlines behavioral expectations for all students. Description of policies include:

- Living on campus
- Alcohol violations
- Drug policy violations
- Sexual misconduct and sexual harassment
- Interpersonal violence
- Possible sanctions and outcomes for violations

This is your chance to get involved! Read about the Community Adjudication Board, as well as the Residential Adjudication Board (Res Board), as an opportunity to get involved with helping and educating fellow George Mason students by resolving student conduct cases.

📞 703-993-6209 🏠 studentconduct.gmu.edu

Academic Standards

Our former Honor Code has been reworked into a statement of Academic Standards that all community members pledge to uphold. As members of the George Mason University community, we are committed to fostering an environment of trust, respect, and scholarly excellence. Our academic standards are the foundation of this commitment, guiding our behavior and interactions within this academic community. The practices for implementing these standards adapt to modern practices, disciplinary contexts, and technological

advancements. Our standards are embodied in our courses, policies, and scholarship, and are upheld in the following principles:

Honesty: Accurate information in all academic endeavors, including communications, assignments, and examinations.

Acknowledgment: Proper credit is provided for all contributions to one's work. This involves the use of accurate citations and references for any ideas, words, or materials created by others in the style appropriate to the discipline. It also includes acknowledging shared authorship in group projects, co-written pieces, and project reports.

Uniqueness of Work: All submitted work is the result of one's own effort and is original, free from plagiarism or self-plagiarism. This principle extends to written assignments, code, presentations, exams, and all other forms of academic work.

Violations of these standards—including but not limited to plagiarism, fabrication, and cheating—are taken seriously and will be addressed in accordance with university policies. The process for reporting, investigating, and adjudicating violations is outlined in the university's procedures. Consequences of violations may include academic sanctions, disciplinary actions, and other measures necessary to uphold the integrity of our academic community.

The principles outlined in these academic standards reflect our collective commitment to upholding the highest standards of honesty, acknowledgment, and uniqueness of work. By adhering to these principles, we ensure the continued excellence and integrity of George Mason University's academic community.

🏠 academicstandards.gmu.edu

Title IX

Title IX of the Education Amendments of 1972 prohibits discrimination on the basis of sex and/or gender under any education program or activity receiving federal financial aid. Sexual harassment, sexual assault, domestic violence, dating violence, stalking, and sexual exploitation are forms of sex discrimination.

George Mason University is committed to providing a learning, living, and working environment free from discrimination. Any sex or gender-based discrimination, including those identified as Prohibited Conduct listed in University Policy 1202, which includes but is not limited to sexual assault, sexual or gender-based harassment, stalking, interpersonal violence, and sexual exploitation, complicity, or retaliation committed by George Mason students, staff, or faculty will not be tolerated. This applies to academic, educational, athletic, residential, and all other university operated and affiliated programs. George Mason encourages individuals who believe they have been subjected to Prohibited Conduct under University Policy 1202 by a George Mason student or employee to seek assistance and to report their concerns to the Title IX Office.

When should I contact the Title IX Coordinator?

Any student, faculty member, staff member, or applicant who has concerns about sex/gender discrimination or sexual misconduct is encouraged to seek the assistance of the Title IX Coordinator.

Contact the Title IX Coordinator if you

- Seek resources or need help on how to handle a situation
- Wish to understand your options if you think you may have encountered sex/gender discrimination or sexual misconduct (sexual assault, sexual or gender-based harassment, stalking, interpersonal violence, sexual exploitation, complicity, or retaliation)
- Observe or learn of a situation that you feel may warrant a formal university investigation
- Seek guidance on possible informal remedies or administrative measures to de-escalate or alleviate a difficult situation
- Have questions about George Mason's policies and procedures
- Wish to inquire about supportive measures as they relate to your academics, your job, your living arrangements, or your travel to school
- Want to learn about No Contact Orders

CONFIDENTIAL RESOURCES

(not required to notify Title IX Office)
 Student Support and Advocacy Center
 Student Health Services
 Counseling and Psychological Services

NONCONFIDENTIAL OR PRIVATE RESOURCES

Housing and Residence Life
 LGBTQ+ Resources Office
 Office of Student Conduct
 Office of the University Ombudsperson
 University Police and Public Safety

To make a Title IX Report, visit oacc.gmu.edu.

GEORGE MASON'S TITLE IX COORDINATOR

Thomas M. Bluestein, JD
 Office of Access, Compliance, and Community
 📍 Aquia Building, Suite 373
 📞 703-993-8730 ✉ titleix@gmu.edu
 🏠 oacc.gmu.edu

Patriots Against Hazing

At George Mason, we take pride in providing a safe and inclusive environment for our students, faculty, and staff. Hazing has no place in our community, and no one should be demeaned or exposed to harm to be involved in campus life. It is all our responsibility to keep our fellow Patriots safe and healthy. Let's all work together on hazing prevention to ensure hazing has no place at George Mason.

George Mason defines hazing as any action taken or situation created, recklessly or intentionally, to produce mental or physical discomfort, embarrassment, ridicule, or possibly cause mental or physical harm or injury to any person on or off the university's campuses, regardless of the participant's consent.

Per [Virginia Code Section 23.1-822](#)

(Adam's Law), George Mason provides a report of past hazing misconduct involving student organizations. The information includes the name of the student organization, the dates (if known) of the hazing behavior, the date such behavior was reported to the university, the dates of investigation and when the organization was found responsible, and a description of the findings. Reports of hazing that did not result in a finding of responsibility are not included. George Mason updates this information at least 10 calendar days prior to the start of each fall and spring semester and maintains the information for 10 years following the date of initial disclosure. For questions about this report, please contact the Office of Student Conduct at OSC@gmu.edu.



AVAILABLE RESOURCES:

Patriots Against Hazing Website:
si.gmu.edu/patriots-against-hazing

The website includes details on the following:

- Virginia Hazing Laws
- George Mason's Hazing Policy
- Patriots Against Hazing Workshops
- Hazing Prevention Resources
- Report Possible Hazing



MEET THE PATRIOT LEADERS



Aden Ahmed
 he/him
 Fairfax, VA; Kismayu, Somalia
Engineering—Undeclared



Kadija Al Aydarous
 she/her
 Saudi Arabia
Community Health



Syed Rayan Ali
 he/him
 Islamabad, Pakistan
*Business, Management Information
 Systems Concentration*



Karen Araya-Porras
 she/her
 Alexandria, VA
English



Tobey Basham
 he/him
 Fairfax, VA
Computer Engineering



Tereana Battle
 she/her
 Chesapeake, VA
Global Affairs



Shandy Cerda
 N/A
 Falls Church, VA
*Art and Visual Technology,
 Graphic Design Concentration*



Hyerin Cha
 she/her
 Incheon, Republic of Korea
Global Affairs



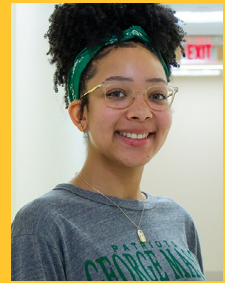
Kate Craig
she/her
Stafford, VA
Nursing



Adannaya Crumpton
she/her
Woodbridge, VA
Neuroscience



Kate DeCarlo
she/her
Fairfax, VA
*Art and Visual Technology,
Graphic Design Concentration*



Faith Dixon
she/her
Richmond, VA
Criminology, Law and Society



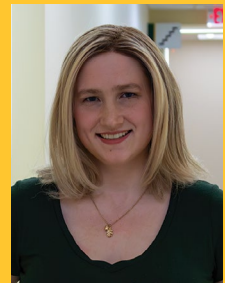
Quoc Khanh Do
he/him
Hanoi, Vietnam
Computer Science



Donesha George
she/her
Salisbury, MD
Psychology



Morsal Hamdard
she/her
Fairfax, VA
Information Technology



Emma Howard
she/her
Woodbridge, VA
English



Batul Idris
she/her
Pakistan
Computer Science



Maria Angelica Anne Intal
she/her
Manila, Philippines; Reston, VA
Business, Accounting Concentration



Terina Ishaqzai
she/her
Fairfax, VA
*Applied Computer Science, Software
Engineering Concentration*



CharanRaj Jayaraja
he/him
Karnataka, India
Computer Science



CeCe Keen
she/her
Danville, VA
Psychology



Milky Kuma
she/her
Arlington, VA
Criminology, Law and Society



Clarisse Ladaban
she/her
Centreville, VA
Information Technology



Destiny Lawrence
she/her
Fredericksburg, VA
*Business, Accounting
Concentration*

Meet the Patriot Leaders (continued)



Sandra Le
she/her
Fairfax, VA
Community Health, Global Health Concentration



John Lizama
he/him
Fairfax, VA
Computer Science



Malat Michael
she/her
Woodbridge, VA
Pre-Health (Pre-Nursing)



Yasir Mohamed
he/him
Fairfax, VA; Somalia
Engineering—Undeclared



Sol Moreno
she/her
Santa Cruz, Bolivia
Cyber Security Engineering



Molly O'Shea
she/her
Norfolk, VA
Film and Video Studies



Jade Peddamekala
she/her
Richmond, VA
Business



Andrea Pinto
she/her
Fairfax, VA
Biology



Kaylah Pratt
she/her
Waldorf, MD
Integrative Studies, Legal Studies Concentration



Shoebur Rahman
he/him
Dhaka, Bangladesh
Information Technology



Nehal Reddy
he/him
Ashburn, VA
Business, Finance Concentration



CJ Reynolds
he/him
Springfield, VA
Business, Marketing Concentration



Amanda Roman Ogg
she/her
San Juan, Puerto Rico
Criminology, Law and Society



Aahil Shaik
he/him
Leesburg, VA
Computer Science



Amartya Shome
he/him
Dhaka, Bangladesh
Computer Science



Shriganesh Sivakumar
he/him
Fairfax, VA
Business, Finance Concentration



Emily Sponaugle
she/her
Elkton, VA
Computer Game Design



Samriddhi Subedi
she/her/they
Kathmandu, Nepal
Psychology



Janna Tosson
she/her
Cairo, Egypt
*Conflict Analysis and Resolution;
Government and International Politics*



Sreemayukha Varshapally
she/her
Hyderabad, India
Forensic Science

STUDENT COORDINATORS



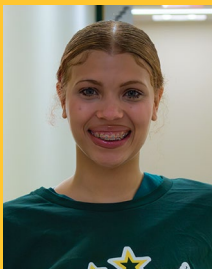
Rylee Back
she/her
Hicksville, NY
History



Emma Bosies
she/her
Salisbury, MD
Criminology, Law and Society



Nicholas Cuevas
he/him
Arlington Heights, IL
*Business, Management
Concentration*



Jade Ridout
she/her
Washington, D.C.
Nursing



Quon Shines
he/him
Virginia Beach, VA
Health Administration; Theater

Patriot Leader applications open in the fall.
Visit greenpolo.gmu.edu for more information!

NOTES

[illegible]

want to find an on-campus or part-time job?

LET **HANDSHAKE** DO THE WORK FOR YOU

LIFE AT GEORGE MASON



handshake.gmu.edu



log in to your account now



University Life
UNIVERSITY CAREER SERVICES
George Mason University®



Patriots Thriving Together

Mental Health and Well-Being Resources
for the George Mason Community.



SCAN TO
LEARN MORE



Well-Being at George Mason



The Center for the Advancement of Well-Being (CWB)

supports students in building resilience, purpose, and well-being. We offer resources and practices that help you thrive academically, socially, and emotionally to succeed in a complex and changing world.



Mason Chooses Kindness

offers students resources and activities to spread kindness across campus. By promoting compassion and connection, we aim to create a supportive environment for everyone at George Mason.



LIBRARIES

George Mason University Libraries provide resources and services at four locations and online to help you with all your research needs. Fenwick Library houses most of George Mason Libraries' research collections, services, and programs in new dynamic spaces. Gateway Library in the Johnson Center provides a supportive environment for undergraduate learning and research. Mason Square Library supports the Schar School of Policy and Government, the Jimmy and Rosalynn Carter School for Peace and Conflict Resolution, and other graduate and professional programs. Mercer Library supports the undergraduate, graduate, and special programs offered on the Science and Technology Campus in Manassas.

Ace Your Research Project in Three Easy Steps

STEP ONE: GET HELP

- ❑ **Ask a Librarian (library.gmu.edu/ask)**
Chat online, email, or schedule a visit with a subject librarian for one-on-one research help.
- ❑ **Tutorials (library.gmu.edu/tutorials)**
Quick and easy tutorials on everything to get you research-ready, from "How to Read a Call Number" to "Anatomy of a Research Paper."
- ❑ **Workshops (library.gmu.edu/workshops)**
Free hands-on workshops on current research resources, strategies, and specialized software.
- ❑ **Subject Guides (infoguides.gmu.edu)**
Subject- and discipline-specific resources curated by experts are at your fingertips!

STEP TWO: FIND YOUR SOURCES (AND SAVE MONEY!)

- ❑ **Books, Journals, and News**
Use your George Mason username and password to log in, locate, and use more than 800 research databases filled with journal articles, images, data, media, and more.

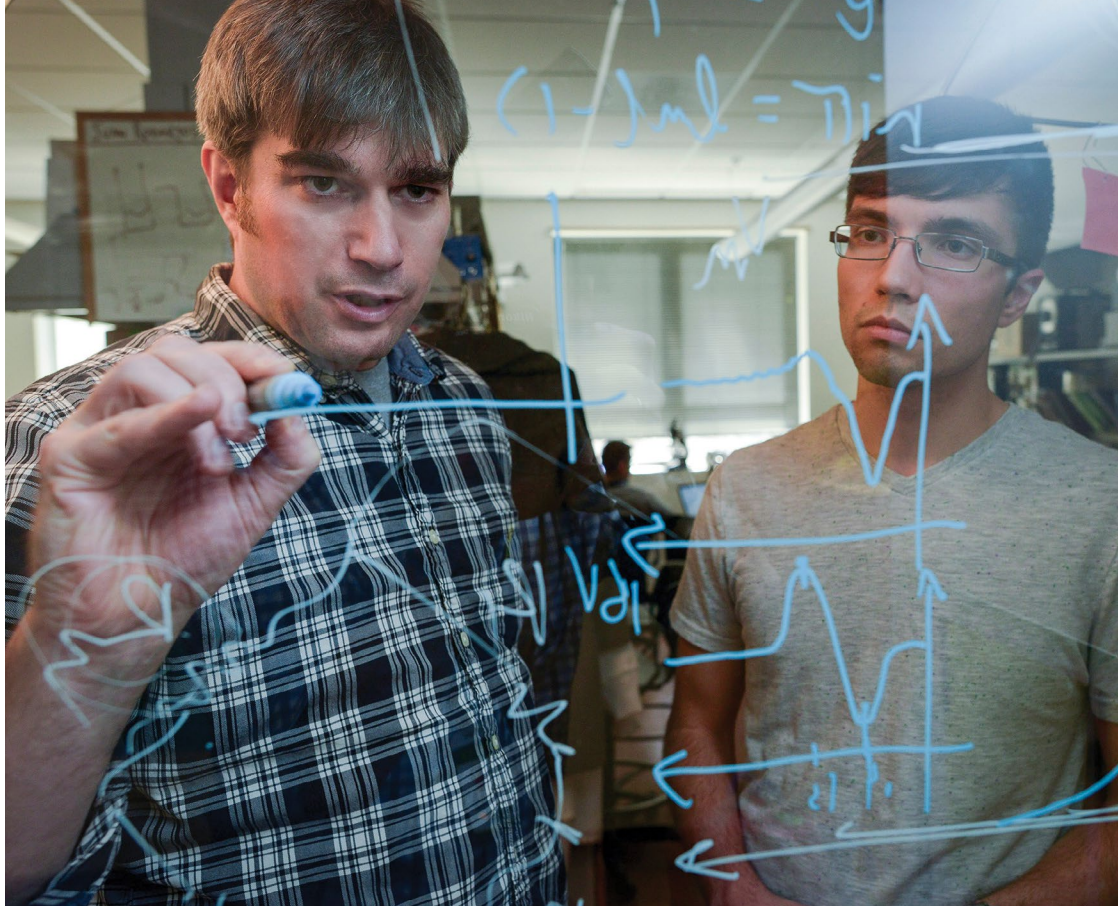
- ❑ **TextSelect (library.gmu.edu/textselect)**
Check out required textbooks for required courses and save money!
- ❑ **Skill Development (library.gmu.edu/use/tech/rosetta)**
Unlimited 24/7 access to Rosetta Stone language software and LinkedIn Learning online training. Learn business skills, photography, web design and development, animation, and 30 different languages for free!
- ❑ **InterLibrary Loan (library.gmu.edu/use/ill)**
Can't find what you need at George Mason? You can request books, media, and articles from other libraries around the world.

STEP THREE: REFINE AND PUBLISH

- ❑ **Scholarly Productions @ the Research Commons (library.gmu.edu/sparc)**
Get help producing your research projects! SP@RC offers help on document design, poster design, citation software, presentations, and author rights.
- ❑ **George Mason Libraries Group Study Rooms (library.gmu.edu/use/study-rooms)**
Fenwick Library provides study rooms that can be scheduled up to 2 weeks in advance through the room reservation system.

🏠 library.gmu.edu





OFFICE OF STUDENT CREATIVE ACTIVITIES AND RESEARCH (OSCAR)

Do you want to assist a professor with their research while getting paid or earning credit?

Do you have a particular topic you would like to investigate?

Do you have an idea for a musical composition, dance production, theater performance piece, or any other creative work that you would like to create?

Do you want to travel to conferences to present your project?

The Office of Student Creative Activities and Research can help you do all of that!

We support undergraduates of all majors in the scholarly and creative endeavors through our work-study research assistantships, Undergraduate Research Scholars Program, and Undergraduate Student Travel Fund. Student scholarship is an integral part of your undergraduate experience and can open the door to many opportunities down the road, so take advantage of this valuable resource.

OSCAR is part of the Mason Impact initiative.

📍 Johnson Center, Room 228 📞 703-993-3794

✉️ oscar@gmu.edu 🏠 oscar.gmu.edu

GLOBAL EDUCATION OFFICE— STUDY ABROAD

The mission of the Global Education Office (GEO) is to foster global learning and understanding by providing transformative educational experiences that prepare students, faculty, and staff to thrive in a diverse, interconnected world.

Benefits of Studying Abroad

Studying abroad is a great resume-builder, and it sets you apart from the regular crowd of job seekers who have not gained an international perspective. You can enhance your George Mason experience and benefit from studying abroad in various ways:

- Gain proficiency in a foreign language.
- Adapt to new situations and apply them to “old” habits.
- Develop an understanding of different cultures.
- Learn how to tolerate ambiguity.
- Grow personally, professionally, and academically.

Global Faculty-Led Programs

Experience the George Mason classroom abroad through a wide range of programs led by George Mason faculty. Programs are offered during winter break, summer, spring, and fall and are open to all.

Semester and Summer School Abroad

George Mason works with dozens of partner universities worldwide to provide quality study-abroad experiences at prestigious host institutions around the globe for summer, semester, and yearlong programs. Students gain invaluable experience through full immersion at the host institution to develop cross-cultural and interpersonal skills.

Global Internships

Students gain experience and earn academic credit while interning at an international company or organization. Virtual, hybrid, and travel internships are available year-round, including part-time and full-time options for all majors and most career fields. First-year students are eligible to participate in their first spring or summer terms.

Freshman Global Gateway

Students can participate in George Mason’s freshman study-abroad program. Gateway destinations are situated in exciting international cities. Students spend their fall semester at George Mason and spring semester on site, pursuing coursework for their major and the Mason Core. Interested students must join before the fall semester. Incoming first-year students interested in the Global Gateway program can refer to their admission portal for the open invitation and link to the application.



Featured Scholarships

GEO Diversifying Study Abroad Scholarship

- \$250 to \$1,500 per award for a GEO study abroad program

GEO Global Perspectives Scholarship

- \$250 to \$1,000 per award for a GEO study abroad program

GEO Donor: Jacquemin Family Foundation Education Abroad Scholarship

- \$1,000 per award for first-time study-abroad applicants

GEO Donor: Earnest and Florrie J. Walker Education Abroad Scholarship

- \$1,000 per award for students majoring or minoring in African and African American Studies

Build-Your-Own Internship Grant

- \$250 to \$1,000 guaranteed award based on number of credits

Featured Exchange Program Grant

- \$1,000 guaranteed award if applying to a Featured Partner School

Scholarships are intended to help defray the costs associated with studying abroad. Award amounts are based on need and subject to availability of funds.

How to Apply

Visit studyabroad.gmu.edu for comprehensive listings and applications. Log in with your George Mason NetID, create a personal profile, and apply.

📍 Johnson Center, Room 235 📞 703-993-2154

✉ goabroad@gmu.edu 🏠 studyabroad.gmu.edu

Start your conservation career now!

Our three residential semester-away programs are open to students in all academic majors.

Conservation, Biodiversity, and Society

Explore the ways that science, management and policy address current conservation issues in and out of the field.

Endangered Species Conservation

Learn to evaluate the vulnerabilities of small populations and develop successful conservation actions to save them from extinction.

Wildlife Ecology and Conservation

Apply cutting-edge field techniques to survey species in the wild and investigate ecological patterns and processes from local to global scales.



The Smithsonian-Mason School of Conservation (SMSC) offers compelling interdisciplinary conservation-based programming at the 3,200-acre Smithsonian Conservation Biology Institute in Front Royal, Virginia. SMSC students receive instruction from world-class Smithsonian researchers and Mason faculty, and gain incomparable hands-on conservation experience extending beyond classroom walls.

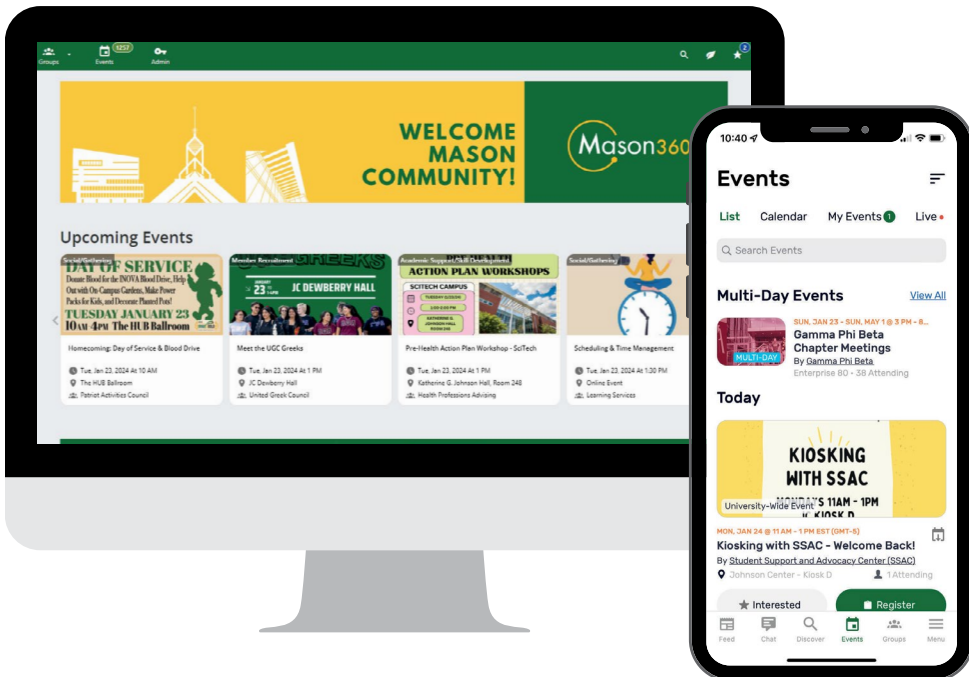
smc@gmu.edu

540-635-0115

smconservation.gmu.edu

GET INVOLVED, GET CONNECTED USING MASON360

Enriching Student Experiences with Seamless Event Access and Engagement!



Your dedicated platform to:



Join Groups



Discover Service Opportunities



Register for Events and More

Visit mason360.gmu.edu or download on the App Store and Google Play

Virtual well-being
platform with 76+
categories ranging
from financial
wellness to fitness.



FREE WELL-BEING FOR YOU AND YOUR FAMILY



SCAN TO REGISTER

Each account comes with four additional subaccounts!



UNIVERSITY SERVICES



STUDENT SERVICES CENTER

The Student Services Center is the first stop and the central resource for students seeking information and solutions related to registration, enrollment, financial aid, billing, academic records, and other student support services. The center assists new and continuing students at all points in their academic career, in one convenient location, thus eliminating the need to visit multiple offices on campus.

LOCATION

The Student Services Center provides in-person services on the lower level of SUB I on the Fairfax Campus and on the first floor of Van Metre Hall at Mason Square in Arlington. Upon arrival, students should proceed to an available kiosk station and check in online. After checking in, students will be greeted by a center representative who can answer both general and specific questions, provide assistance with navigating university resources, and provide referrals to specialists when necessary.

Walk-in services are available Monday through Friday, 9 a.m. to 5 p.m., on the Fairfax Campus and Tuesday through Thursday, 2:30 to 6:30 p.m., at Mason Square.

Visit the Student Services Center Community at **knowledge.mssc.gmu.edu** to find answers on topics like admissions, billing and payments, financial aid, registration, and more.

Other virtual services are available at **mssc.gmu.edu** and via phone at 703-993-2000.



STUDENT ACCOUNTS

The mission of the Student Accounts Office is to provide excellent service for our students, staff, and faculty, while maintaining internal controls that ensure financial transactions are accurately processed and proper records are maintained.

Our website, studentaccounts.gmu.edu provides additional information and guides on the following topics:

Communication Policy

The Student Accounts Office communicates with students via their George Mason email address. Students are required to activate their George Mason email account and check it regularly.

Electronic Billing

We bill tuition and fees electronically through the Bill and Payment System. Paper invoices are not mailed. Semester ebills are sent electronically to students and authorized users. The ebill is a snapshot of the account at the time of invoicing; real-time account charges and balances may be viewed at any time via the My Account tab in the Bill and Payment System.

Authorized Users

For ease in submitting payments and staying up to date on financial information, students should set up their parents as authorized users in the Bill and Payment System. Authorized users will receive ebill notices and be able to access student accounts but are not able to view academic information.

Semester Payment Plans

Payment plans are available online through the Bill and Payment System for students who need to budget their accounts. Please note there is no convenience fee for electronic check payments. All payment plans require a \$30 contract fee, which is nonrefundable.

Late Payment Fee

A late payment fee of 10%, up to a maximum of \$125, may be charged to your account if your balance remains unpaid by the due date. You will be sent a message at your George Mason email address giving you the opportunity to avoid a late fee by paying your balance. Failure to receive a reminder e-bill confirming your charges does not waive the requirement to pay on time.

Collections

Accounts that remain unpaid at the end of each semester may be referred to a collection agency, credit bureaus, the Virginia Department of Taxation, and the Office of the Virginia Attorney General and may be subject to a collection fee.

Registration Policies and Class Drop Deadlines

Classes will not be canceled for nonpayment or nonattendance. Students are responsible for confirming their withdrawal from any classes by the published deadlines. Approved late schedule adjustments after the deadline to add classes will incur additional fees of up to \$125. Please visit studentaccounts.gmu.edu for penalty deadlines.

Tuition Insurance

We offer tuition insurance through GradGuard, which helps students and families overcome the financial losses that may result from events that force students to withdraw from the semester due to a covered medical reason. This coverage strengthens and broadens the scope of our existing refund policy by ensuring reimbursement for tuition, housing, and other payments if a student withdraws for any covered medical reason at any time during the semester. The deadline to purchase each term is up until the last day to drop classes with a 100% refund for the semester.

Direct Deposit

We encourage students to enroll in direct deposit to receive refunds electronically.

Financial Good Standing

Financial good standing and a university record clear of holds are required for students to receive services. Services, including, but not limited to, diploma release, class registration (add, drop, withdrawal, and so forth), and/or housing and meal plans will not be provided to students with a financial balance due or a hold of any kind on their record.

Third-Party Billing

Third-party billing requirements and procedures are available at studentaccounts.gmu.edu/third-party-billing-office.

STUDENT FINANCIAL AID

The mission of the Office of Student Financial Aid is to help make it financially possible for all admitted applicants to attend George Mason University. The office provides financial aid services to assist prospective and current students and their families. During the 2025–26 academic year, students will receive more than \$300 million in some form of financial assistance (grants, scholarships, work-study, and loans). An array of federal, state, and institutional financial aid programs help students at all economic levels pay for their college education.

Types of Financial Aid

FEDERAL GRANTS (Do not need to be repaid.)

Federal Pell Grant: These need-based grants for low-income undergraduate students provide access to postsecondary education. Grant amounts are dependent on the student's Free Application for Federal Student Aid (FAFSA) results, cost of attendance, and enrollment status.

Federal Supplemental Educational Opportunity Grant (FSEOG): This grant is for undergraduate students with exceptional financial need.

STATE GRANTS (Do not need to be repaid.)

George Mason Out-of-State Grant: The purpose of the grant is to provide assistance to financially needy undergraduate out-of-state residents.

Virginia Guaranteed Assistance Program (VGAP): The purpose of the grant is to provide financially needy students who graduated from a Virginia high school with an incentive to attend college.

Virginia Commonwealth Award: This grant provides assistance to financially needy undergraduate Virginia residents.

SCHOLARSHIPS (Do not need to be repaid.)

There are many different resources for students to use when searching for scholarship opportunities. George Mason's Office of Student Financial Aid posts a list of scholarships offered to students by George Mason University (referred to as "internal" scholarships) and a list of outside or external scholarships offered by a variety of external sources (agencies, companies, private donors, etc.) for undergraduate and graduate students as the scholarships become available.

FEDERAL WORK-STUDY (FWS)

George Mason University offers Federal Work-Study for eligible students to help pay for college expenses. This program allows students to work in a variety of part-time positions while building their resumes, time management skills, and job abilities.

LOANS

Various types of loans are available to assist in financing a student's education. After a student completes and submits a FAFSA, based on the student's eligibility, the Office of Student Financial Aid can offer Federal Direct Subsidized and/or Unsubsidized Loans.

Finances Should *Not* Be a Barrier to Investing in Your Future.

📍 SUB I

☎ 703-993-2000, 703-993-2350 (fax)

✉ finaid@gmu.edu

🏠 financialaid.gmu.edu





FEDERAL DIRECT LOANS (UNDERGRADUATE STUDENTS)

DEPENDENT STUDENTS

YEAR	SUBSIDIZED	ADD'L UNSUBSIDIZED	TOTAL
Freshman	\$3,500	\$2,000	\$5,500
Sophomore	\$4,500	\$2,000	\$6,500
Junior	\$5,500	\$2,000	\$7,500
Senior	\$5,500	\$2,000	\$7,500

INDEPENDENT STUDENTS

YEAR	SUBSIDIZED	ADD'L UNSUBSIDIZED	TOTAL
Freshman	\$3,500	\$6,000	\$9,500
Sophomore	\$4,500	\$6,000	\$10,500
Junior	\$5,500	\$7,000	\$12,500
Senior	\$5,500	\$7,000	\$12,500

FEDERAL DIRECT LOANS (GRADUATE STUDENTS)

YEAR	ADD'L UNSUBSIDIZED	TOTAL
Graduate	\$20,500	\$20,500

IMPORTANT DATES TO REMEMBER

March 1 FAFSA and VASA Priority Deadline for Freshman and Returning Undergraduate Students (to be considered for state grant eligibility)

March 15 FAFSA Priority Deadline for All New Fall Transfer Undergraduate Students (to be considered for state grant eligibility)

November 1 FAFSA Priority Deadline for All New Spring Transfer Undergraduate Students (to be considered for state grant eligibility)

INFORMATION TECHNOLOGY SERVICES

🏠 its.gmu.edu 📞 703-993-8870

Check out our “Getting Started for Students” guide at its.gmu.edu/get-started.

🏠 chat.its.gmu.edu

Don't forget to download the Mobile Mason app for Apple and Android devices.

Getting Started Guide
its.gmu.edu/get-started



Help and Support Resources

NEED HELP?

Information Technology Services (ITS) support is available 24/7, 365 days/year.

TWO-FACTOR AUTHENTICATION

George Mason uses Duo Security to deliver two-factor authentication (2FA) when students access certain websites and applications. This second layer of protection makes personal information less vulnerable.

🏠 2fa.gmu.edu

Telecommunications

STUDENT EMAIL

Office 365 email is the official email for students. Directions for logging in for the first time are available at its.gmu.edu/get-started.

ZOOM

Zoom, gmu.zoom.us, is a cloud-based web conferencing tool for video and audio conferencing, collaboration, chat, and webinars.

Network Services

For more information about George Mason's network services see its.gmu.edu/network-access.

WI-FI NETWORK

Wi-Fi network access is provided in all academic, administrative, residential, recreational, and dining spaces. For the best Wi-Fi experience, connect to the eduroam network or ResNet in residence halls.

WIRED NETWORK

Wired network access is provided in all classrooms, residence halls, and public spaces.

GUEST NETWORK

Guests of students may self-register for internet access over George Mason's Wi-Fi networks.

RESIDENT HALL SUPPORT (RESNET)

ResNet, provided by Boldyn Higher Education/Apogee, is a new and improved wired and Wi-Fi system located in the residence halls.

🏠 its.gmu.edu/resnet



GM GEORGE MASON
UNIVERSITY

timelycare

**Virtual mental health platform
designed for college students
to have 24/7 access to various
resources.**

Scan the QR code to
learn more about
the resources
available.





Learning and Technology Resources

PATRIOT VIRTUAL COMPUTING AND LABS (PVCL)

The Patriot Virtual Computing and Labs provides remote access to academic software to support coursework.

🏠 lts.gmu.edu/pvcl

LINKEDIN LEARNING

George Mason has partnered with LinkedIn Learning to provide free, unlimited online training. The online subscription library offers students 24/7 access to thousands of videos on a broad range of subjects.

🏠 lil.gmu.edu

CANVAS

Canvas by Instructure, George Mason's learning management system, provides a secure login system and a variety of tools to manage both in-person and online courses. Some tools include assignments, discussions, modules, pages, and quizzes.

🏠 canvas.gmu.edu

MICROSOFT 365

🏠 mso365.gmu.edu

MICROSOFT 365 APPS FOR ENTERPRISE

George Mason students can download and install the latest version of Microsoft 365 apps on up to five devices.

MICROSOFT TEAMS

Microsoft Teams is an enterprise-wide collaboration suite within Office 365 and provides chat, audio calling, video calling, screen sharing, and more.

ONEDRIVE

George Mason students can access OneDrive within Office 365 to store files in the cloud.

Technology Spaces

COLLABORATIVE LEARNING HUB (CLUB)

The walk-in lab features Windows and Mac workstations, a walk-up help bar, sound space, 3D printers, and collaborative spaces that include digital imaging, video-editing, web development, and other software.

♥ **Fairfax:** Johnson Center, Room 311

COMPUTER LABS

♥ **Fairfax:** Innovation Hall, Room 301, and Johnson Center, Room 342

♥ **Mason Square:** Van Metre Hall, Room 211

♥ **Science and Technology:** Katherine G. Johnson Hall, Room 250

STUDENT TECHNOLOGY ASSISTANCE AND RESOURCE LAB (STAR)

The multimedia computer and equipment checkout facility provides students with the space and resources to complete creative projects.

♥ **Fairfax:** Johnson Center, Room 229

AMPLIFY YOUR CAMPUS EXPERIENCE



SHOPMASON

SCAN ME



TO LEARN
MORE

Your one-stop shop for your everyday needs at George Mason. From dining, vending machines, and campus shuttles to package delivery, locker rentals, video games and billiards, and even event tickets—we have got you covered!

PATRIOT PERKS

SCAN ME



TO LEARN
MORE

Explore 200+ exclusive discounts offered to students, faculty, staff, retirees, and alumni in and around Northern Virginia!



Follow us @shopmason

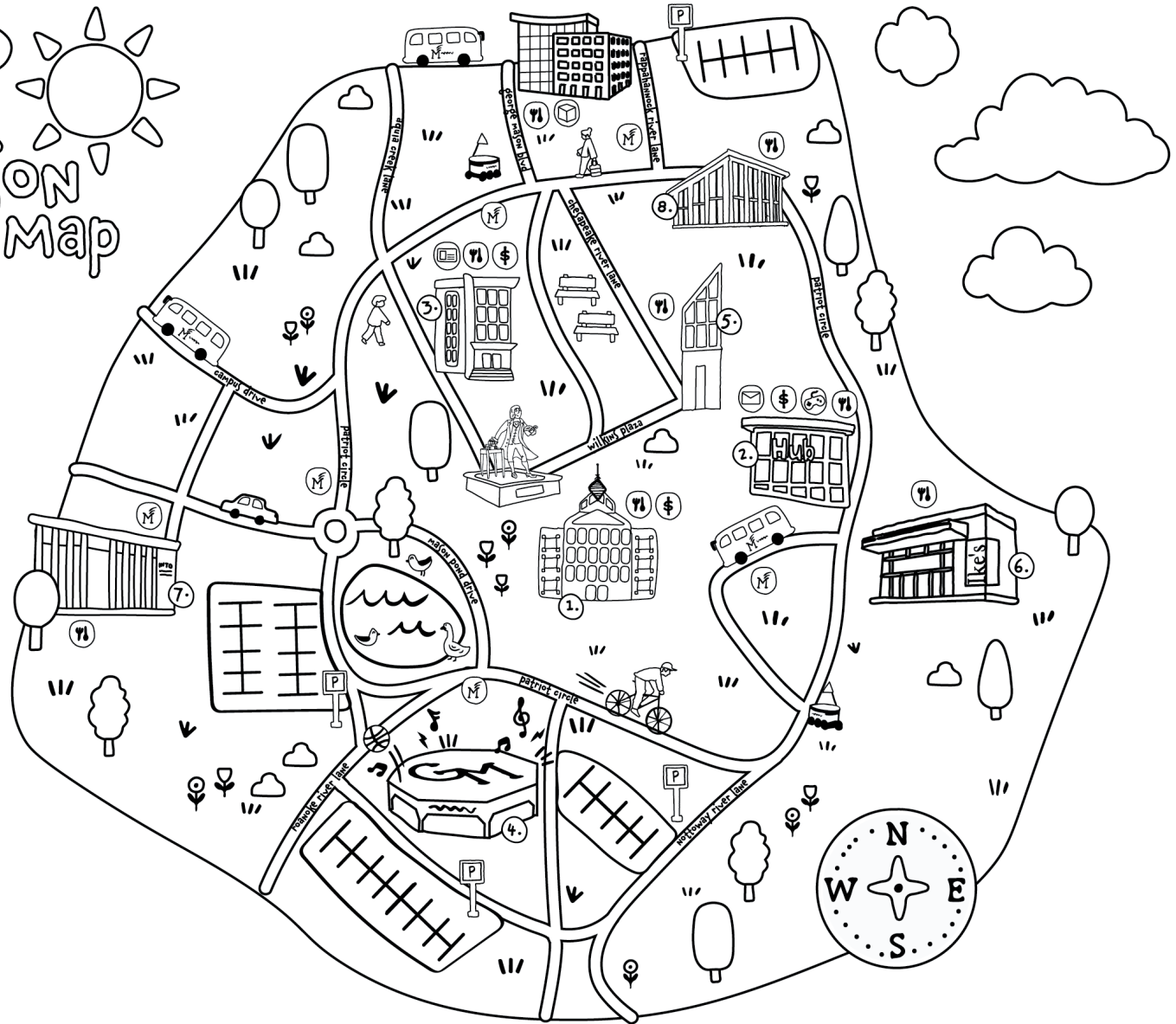
Visit shopmason.gmu.edu to explore more



the ShopMason Map

MAP KEY

- 1. The Johnson Center
- 2. The Hub
- 3. Sub 1
- 4. EagleBank Arena
- 5. Southside Dining Hall
- 6. Ike's Dining Hall
- 7. The Globe Dining Hall
- 8. The Spot Dining Hall
- M Mason Shuttle Stops
- U The UPS Store
- ✉ Print & Mail Hub
- 🍴 Dining Locations
- 👤 Corner Pocket
- 🏦 Wells Fargo ATMs
- 🏢 Mason Card Office





PARKING AND TRANSPORTATION

George Mason offers an array of parking, transit, and transportation choices to students, faculty, and staff. We encourage you to have more than one way to get to campus in order to reduce the number of times you drive alone.

Below is a brief overview of your options. For more details, visit our website at transportation.gmu.edu.

We are happy to assist you with any questions. Contact us at transpo@gmu.edu, by phone at 703-993-2828, or on X @MasonParking and @MasonShuttles.

George Mason Commutes

Looking for someone to share a ride or commute together by car, bike, or transit? Visit masoncommutes.com to get started.

Parking

- On the Fairfax Campus, we offer a host of daily, weekly, monthly, and semester parking options at various price points.
- For parking options, pricing, and permit purchase, including those at Mason Square and the Science and Technology Campus, please visit parking.gmu.edu to get started.
- Free Parking Available: There is a no-cost parking option that utilizes George Mason Shuttles. You can park for free at the Manassas Mall and take the Fairfax/SciTech shuttle route to either campus. For all shuttle schedules, visit shuttle.gmu.edu.

♥ Parking Services Building
(next to Shenandoah Parking Deck)
☎ 703-993-2710 ✉ parking@gmu.edu
🏠 parking.gmu.edu ✕ @MasonParking

George Mason Shuttles

George Mason Shuttles offer multiple routes to transport the university community to a variety of destinations. George Mason Shuttles are free, but require a Mason ID to ride.

- For times and stops, please visit shuttle.gmu.edu. Schedules can be impacted by traffic volume, accidents, and road conditions. Don't cut it too close. Schedule yourself to arrive early, just in case. George Mason Shuttles use the RideSystems real-time bus tracking site.
- Shuttle schedules are subject to change during emergencies, extreme weather conditions, holidays, and student breaks. Be sure to check shuttle.gmu.edu for the latest scheduling information.

Transit

CUE BUS

George Mason students, faculty, and staff have free access to the Fairfax City CUE Bus. The CUE Bus has routes in Fairfax City, all of which end at the Vienna Metro Station. For details and the schedule, visit cuebus.org. The CUE Bus stops on campus at Rappahannock River Lane (next to Merten Hall) and uses the TransLoc website and app to track bus arrival times.

METRO

The closest Metro stop in Fairfax is the Vienna Metro Station on the Orange Line. From there, you can travel to various locations in Washington, D.C., and to Mason Square in Arlington (Virginia Square-GMU Metro Station). For a Metro rail map, visit wmata.com/schedules/maps. Please note that Metro schedules and service levels are subject to change. To stay up to date, sign up for Metro Alerts at wmata.com/rider-guide/subscribe.

PUBLIC BUSES

The Washington Metropolitan Area Transit Authority (WMATA) runs bus services in multiple jurisdictions in Virginia, Maryland, and Washington, D.C. If you are traveling within Fairfax County, check out the Fairfax Connector. Within Arlington County, you can ride on the ART buses and in Prince William County, look into the PRTC buses. All of these buses, the CUE Bus, Metro trains, and more can be routed using the WMATA trip planner at wmata.com. Map it out before you go!

Transportation

BIKING OPTIONS

George Mason has more than 1,300 bike parking spots on campus and is a silver-rated Bicycle-Friendly University in Fairfax and bronze-rated at Mason Square. Register your bicycle at bike.gmu.edu and receive a free U-lock, registration sticker, bike light, and more.

As a student, you also have access to a \$25 annual membership to Capital Bikeshare. Bikeshare stations are located on the Fairfax Campus and at Mason Square, as well as throughout the region.

To find out more about bicycling at George Mason and to see a map of facilities, visit bike.gmu.edu.

CARPOOL

CARPOOL ZONES: FLEXIBLE AND EASY

- Premium Carpool Program: Save some money!
- Application required

More information on the premium student carpool option is available at transportation.gmu.edu by clicking on the transportation tab.

ZIPCAR

- Rent a car just when you need it, by the hour or the day
- Available on the Fairfax Campus
- Sign up at zipcar.com/zipgmu
- Gas and secondary insurance are included in the rental rate

TRANSPORTATION ADMINISTRATION

☎ 703-993-2828 ✉ transpo@gmu.edu

🏠 transportation.gmu.edu ✉ @MasonShuttles



MASON CARD OFFICE

The Mason Card Office issues Mason IDs, administers meal plans, and coordinates the Mason Money program.

Mason ID

The Mason ID is an integral part of campus life and provides access to the following:

- Meal Plans
- Residence Halls
- George Mason Athletic Events
- University Libraries
- George Mason Shuttles
- Printing
- Mason Money
- Exams
- Lab/Room Access
- Center for the Arts Performances

Students should submit a picture for the Mason ID online. It must be taken against a white background from the shoulders up. For additional requirements, visit the following site: masonmoneyonline.gmu.edu.

You must visit the Mason Card Office located in Student Union Building I and show a government-issued photo ID (passport, military ID, or driver's license) to obtain a physical Mason ID. Or, mobile digital credentials can be provided once the uploaded photo has been approved.

Only one Mason ID is allowed, either mobile or physical. Visit the Mason Mobile ID website for more information at masoncard.gmu.edu/mobile.

Lost Mason IDs

There is a \$25 fee for lost, stolen, or damaged Mason IDs. The Office of Housing and Residence Life offers temporary cards for residence hall access for 48 hours.

Meal Plans

George Mason University's dining program promotes community dining and healthy choices. Choose from three dining halls and 20+ venues across three campuses. Plans are billed to the student account, which allows for tax-exempt dining. Visit mealsplans.gmu.edu for more information.

Meal plan usage and changes can be viewed on the Atrium Campus Connect app or online at masonmoneyonline.gmu.edu.

Students Living on Campus

Students choose their freshman meal plan during housing selection. The Independence plan provides unlimited access into the dining halls, three guest swipes, and Dining Dollars.

Dining Dollars are accepted in all dining venues and available in \$100 increments up to \$500. Unused balances roll over from fall to spring semesters.

Students Living Off Campus

Students living off campus are welcome to take advantage of cost-saving meal plans. The meal plan website has all the details.

Mason Money

Mason Money is a debit card program. Funds can be loaded onto the Mason ID to make purchases both on and off campus. For deposits and a complete list of retailers visit masonmoneyonline.gmu.edu

Dining Dollars vs. Mason Money

Dining Dollars	Mason Money
Part of the meal plan accessed with the Mason ID	A declining account attached to Mason ID
Tax-exempt purchases in select dining locations	Taxable on all purchases
Remaining balance rolls from fall to spring	Balance stays throughout matriculation
Accepted by Starship (robot delivery)	Accepted by Starship (robot delivery) and Grubhub
Only accepted at dining venues on campus	Accepted at all on- and off-campus dining venues, the bookstore, for printing, etc.
Billed to the student account	Funds deposited via Online Card Office or Mason Card Office. Visa/MasterCard accepted.

📍 SUB I, Room 1203

☎ 703-993-1004 🏠 mealsplans.gmu.edu

🏠 Masonid.gmu.edu



MASON DINING

Whether you are living on or off campus, our meal plan options are available to all students. Choose from a variety of plans that suit your lifestyle and preferences—from all-you-care-to-eat in our dining halls to more than 20 retail locations across three campuses. Discover your choices online at **dining.gmu.edu** by taking a dining quiz.

View the menus for all dining halls on our website or by downloading the Everyday app. Within the app, menu items will display allergens and nutritional content.

We take pride in being the first university in the nation to be verified as allergy-friendly by Spokin.

We have several options across campus that serve allergen-friendly meals including our exclusive Simple Servings station, Simple Zone allergen-free pantry, and our certified allergen-friendly bakery. Your health and dietary needs are important to us, and our award-winning healthy eating and allergen-friendly dining programs make it easy to find foods that fit you.

Sustainability and diversity are at the core of our dining program. With four dining halls to choose from, we proudly observe eco-friendly practices and diverse culinary choices, and we are committed to making a positive impact on both your dining experience and the environment. Indulge in vegetarian and vegan-friendly options at our exclusive plant-forward dining hall, The Spot! All our dining halls serve halal offerings, and The Eaterie features The Mason Mensch—our dedicated kosher station—providing delicious, certified kosher meals. George Mason also participates in food waste prevention via LeanPath and preconsumer composting.

Busy studying? Don't give up your table in the library—order delivery via Mason Dining's Starship robot delivery fleet! You can also order ahead with Starship for a quick and convenient pickup. Download the Starship Deliveries app from the App Store or Google Play to start placing orders today.

Elevate your college dining experience at George Mason! If you have any questions or need assistance, feel free to email **dining@gmu.edu** or visit our website, **dining.gmu.edu**.



Scan the QR code to take the dining quiz!

✉ dining@gmu.edu 🗨 Text DiningLive to 82257

🏠 dining.gmu.edu 📷 @mason_dining



PRINT AND MAIL SERVICES

Student Printing

George Mason University has partnered with Canon to provide print services for all students. George Mason uses a “Follow Me Print” system in which students can send their print jobs from any computer connected to the university’s computer network. This network includes campus-owned devices and personal computers or mobile devices. Students can retrieve their print jobs from any of the almost 300 multifunction devices located across all George Mason campuses.

Students are not required to purchase a personal printer, as Canon devices are available in all on-campus residence halls. Each residence hall will have at least one device available 24 hours a day, seven days a week. Devices are also available in all areas frequented by students.

The Canon devices can also be used for copying and scanning.

Mason Money is used to pay for printing at a cost of \$0.10 for each black-and-white print/copy and \$0.25 for each color print/copy. There is no charge for scanning. Students will not be charged until they release their job(s) at a device.

Canon operates a full-service print shop on campus to fulfill all printing needs. Products include, but are not limited to, posters, banners, flyers, business cards, bound items, and yard signs. More information about the Canon Print Hub can be found at gmuprinthub.com.

Mail Procedures

All students living on campus are assigned a mailbox number by mail services free of charge. This number will be each student’s unique identifier for sending and receiving paper mail and packages.

Student mailing addresses are written as follows:

First Name Last Name

4450 Rivanna River Way #XXXX (Student’s unique mailbox number)

Fairfax, VA 22030

All mail and packages **MUST** contain the mailbox number.

All student mail is stored at The Hub on the lower level in the Mail Services area.

Paper mail (letters, magazines, etc.) is stored in file folders behind the Mail Services counter. Students will walk up to the counter and request their paper mail from a Mail Services representative.

Packages are stored in computerized smart lockers. Students will receive an email/text message alerting them to the presence of a package. This message will contain the locker number and four-digit code to retrieve the package. If the item is oversized, oddly sized, or perishable, the message will instruct them to pick up the package at the counter.

There is no notification for paper mail.

Mail Services offers outbound parcel service through the U.S. Postal Service and UPS. Payment can be made by credit/debit card or Mason Money.

For more information, please visit printandmail.gmu.edu.





NEW LOOK,
SAME PATRIOT PRIDE

We've Got a New Look That's
All Together Different

Auxiliary Services and Operations UNIVERSITY BOOKSTORE George Mason University®

Course Materials

3 Easy Ways to Order

In Store · Patriot Web · Online

Textbooks

Pricing Options:

- New
- Used
- Rental
- Digital



Tech

*Shop our university
recommended laptops!*



Auxiliary Services and Operations
UNIVERSITY BOOKSTORE
George Mason University®

gmu.bncollege.com
703-993-2666

MASON ARTS FOR MASON CORE

EMBRACE YOUR CREATIVE ENERGY AND COMPLETE
YOUR MASON CORE ARTS REQUIREMENT AT THE SAME TIME.



Step into the spotlight with THR 210

Start your screenplay with FAVS 280

Toot your horn or lift your voice in MUSI 383 or 381

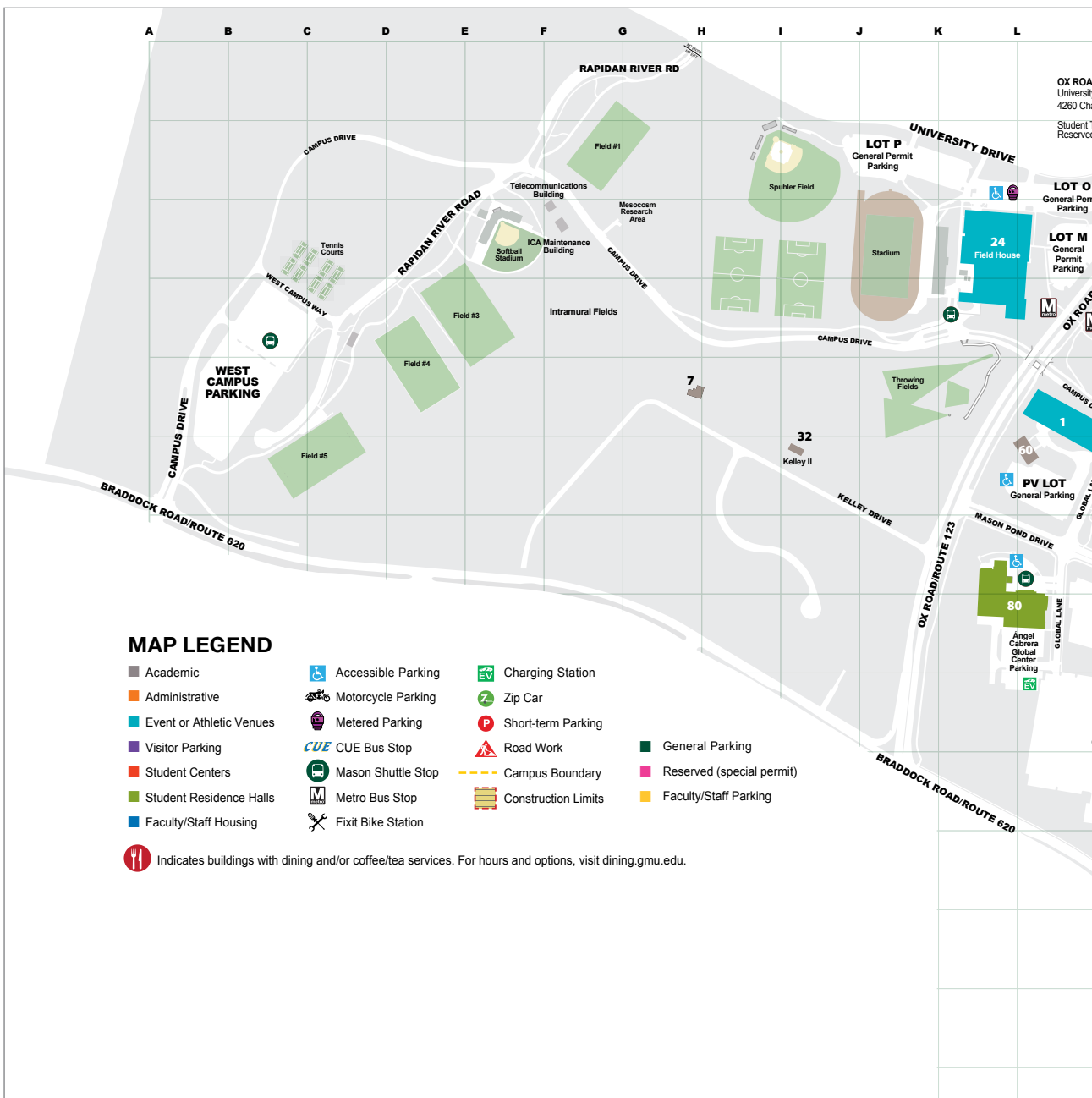
For a full list of all your Mason Arts for
Mason Core options, explore the catalog.

catalog.gmu.edu/mason-core

MASONARTS



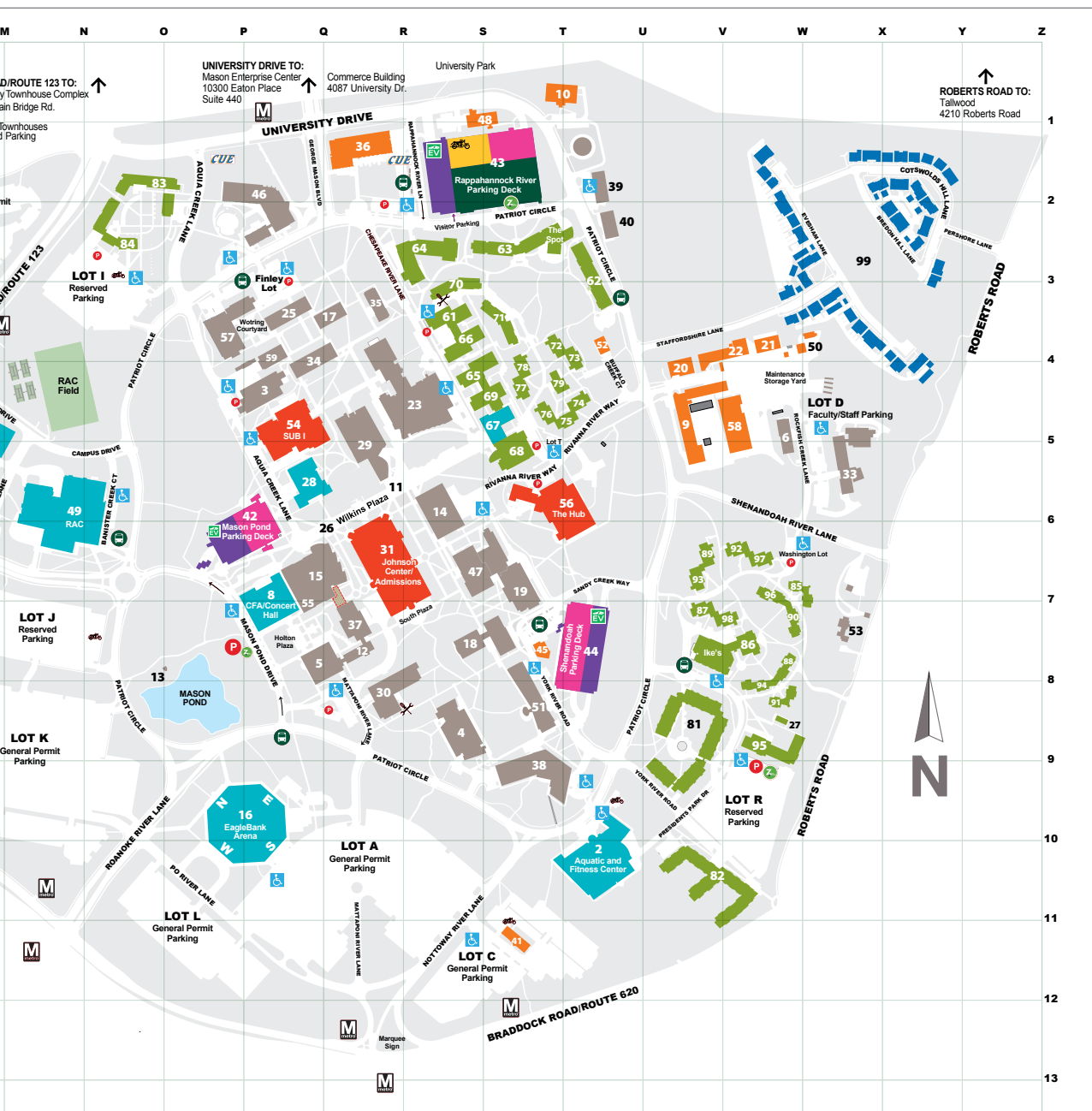
COLLEGE OF VISUAL
AND PERFORMING ARTS
George Mason University®



MAP LEGEND

- Academic
 - Administrative
 - Event or Athletic Venues
 - Visitor Parking
 - Student Centers
 - Student Residence Halls
 - Faculty/Staff Housing
 - Accessible Parking
 - Motorcycle Parking
 - Metered Parking
 - CUE Bus Stop
 - Mason Shuttle Stop
 - Metro Bus Stop
 - Fixit Bike Station
 - Charging Station
 - Zip Car
 - Short-term Parking
 - Road Work
 - Campus Boundary
 - Construction Limits
 - General Parking
 - Reserved (special permit)
 - Faculty/Staff Parking
- Indicates buildings with dining and/or coffee/tea services. For hours and options, visit dining.gmu.edu.

- | | | |
|------------------------------------------|------------------------------------------------|----------------------------------------------|
| 1 L-4 Activities Building | 21 V-4 Facilities Management, Archives | 39 T-2 Northeast Module |
| 2 T-10 Aquatic and Fitness Center | 22 V-4 Facilities Management, Operations | 40 T-2 Northeast Module II |
| 3 P-4 Aquia Building | 23 R-4 Fenwick Library | 41 S-11 Nottoway Annex |
| 4 R-9 Art and Design Building | 24 K-3 Field House and Module | 42 P-6 Parking Deck, Mason Pond |
| 5 Q-8 Buchanan Hall | 25 Q-3 Finley Building | 43 S-1 Parking Deck, Rappahannock River |
| 6 W-5 Carow Hall | 26 Q-6 George Mason Statue and Enslaved People | 44 T-8 Parking Deck, Shenandoah |
| 7 H-4 Carty House | of George Mason Memorial | 45 S-7 Parking Services |
| 8 P-7 Center for the Arts/Concert Hall | 27 W-9 Greenhouse | 46 P-2 Peterson Hall |
| 9 V-5 Central Heating and Cooling Plant | 28 Q-6 Harris Theatre | 47 S-7 Planetary Hall |
| 10 T-1 Child Development Center | 29 Q-5 Horizon Hall | 48 S-1 Police and Safety Headquarters |
| 11 R-6 Clock | 30 R-8 Innovation Hall | 49 N-6 Recreation and Athletic Complex (RAC) |
| 12 Q-8 College Hall | 31 R-6 Johnson Center/Admissions | 50 W-4 Recycling Center |
| 13 O-8 Cross Cottage | 32 I-5 Kelley II - 10716 Kelley Drive | 51 T-8 Research Hall |
| 14 R-6 David King Hall | 33 W-5 Krasnow Institute | 52 U-4 Rivanna Module |
| 15 Q-7 de Laski Performing Arts Building | 34 Q-4 Krug Hall | 53 X-7 Roberts House |
| 16 P-10 EagleBank Arena | 35 R-3 Lecture Hall | 54 Q-5 Student Union Building I |
| 17 Q-3 East Building | 36 Q-1 Merten Hall | 55 Q-7 TheaterSpace/Black Box |
| 18 S-8 Enterprise Hall | 37 Q-7 Music/Theater Building | 56 T-6 The Hub |
| 19 S-7 Exploratory Hall | 38 T-9 Nguyen Engineering Building | 57 P-4 Thompson Hall |
| 20 U-4 Facilities Administration | | 58 V-5 Warehouse, Customer Service Center |



- 59 P-4 West Building
- 60 L-6 West PE Module

STUDENT HOUSING
Rappahannock Neighborhood

- 61 R-3 Blue Ridge (P)
- 62 T-3 Eastern Shore
- 63 S-3 Hampton Roads and the Spot (P)
- 64 R-3 Northern Neck (P)
- 65 S-4 Piedmont*/Housing Office
- 66 S-4 Sandbridge
- 67 S-5 Skyline Fitness Center
- 68 S-5 Southside Dining (P)
- 69 S-4 Tidewater (P)
- 70 S-3 Commonwealth
- 71 S-3 Dominion

The Commons

- 72 T-4 Amherst
- 73 T-4 Brunswick

- 74 T-5 Carroll
- 75 T-5 Dickenson
- 76 T-5 Essex
- 77 S-4 Franklin
- 78 S-4 Grayson
- 79 T-4 Hanover

Shenandoah Neighborhood

- 80 L-7 Angel Cabrera Global Center (P)
- 81 V-9 Liberty Square
- 82 V-11 Potomac Heights
- 83 O-2 Rogers (P)
- 84 O-2 Whitetop

Presidents Park

- 85 W-7 Adams
- 86 V-7 Eisenhower* and Ike's Diner (P)
- 87 V-7 Harrison
- 88 W-8 Jackson
- 89 V-6 Jefferson

- 90 W-7 Kennedy
- 91 W-8 Lincoln
- 92 V-6 Madison
- 93 V-7 Monroe
- 94 V-8 Roosevelt
- 95 V-9 Taylor
- 96 W-7 Truman
- 97 W-6 Washington
- 98 V-7 Wilson

FACULTY/STAFF HOUSING

- 99 X-3 Masonvale

*24-hour Residential Desk

Stay up to date with construction information at building.gmu.edu.

Revised 04/2025



ARE YOU MASON READY?

 ready.gmu.edu

Emergency Notifications

Mason Alert is George Mason University's **emergency notification system** that is used to send emergency notifications and timely warnings to the university community via text, email, telephone call, and digital signage. **Scan the QR code below** or visit **alert.gmu.edu** to learn more.



Emergency Preparedness App

Rave Guardian is a campus safety mobile application that enhances preparedness and safety on campus using interactive features and allowing students to create a virtual network of friends, family, and campus safety personnel. The application also includes anonymous, two-way crime reporting through text and picture messaging.

The application is available to all students with a university email address for free through the iTunes store and Google Play store.

Learn more by visiting
ready.gmu.edu/rave-guardian

Visit **ready.gmu.edu** to learn more about emergency preparedness and fire safety at George Mason University

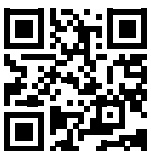


University Life
MASON RECREATION
George Mason University®

MASON RECREATION



Patriots learn big, play hard, and live well! Come explore all that Mason Recreation has to offer. Whether you are into fitness, aquatics, intramurai sports, club sports, outdoor adventures, or team building—Mason Recreation has something for everyone!



Scan the QR code to learn more!

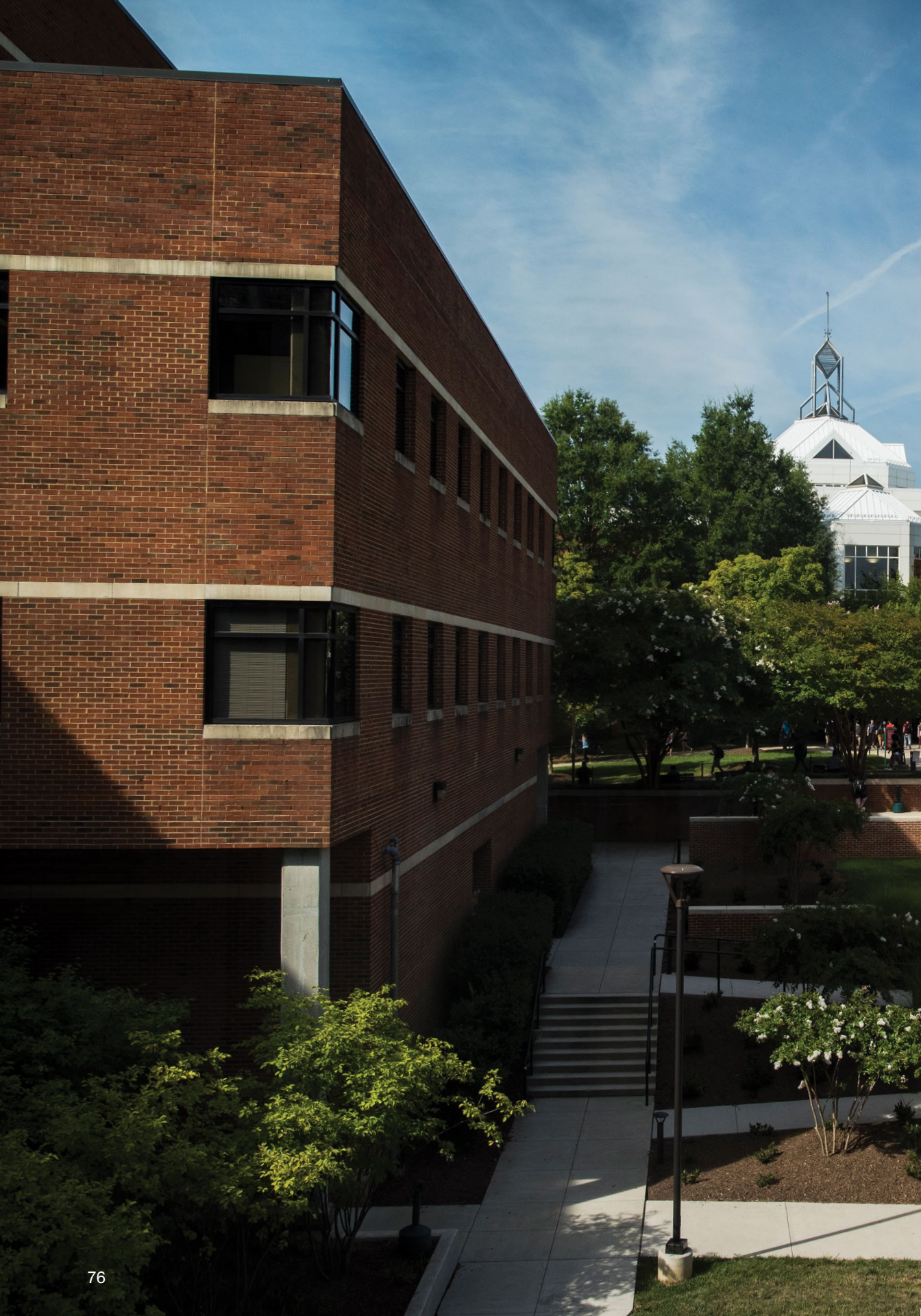
recreation.gmu.edu



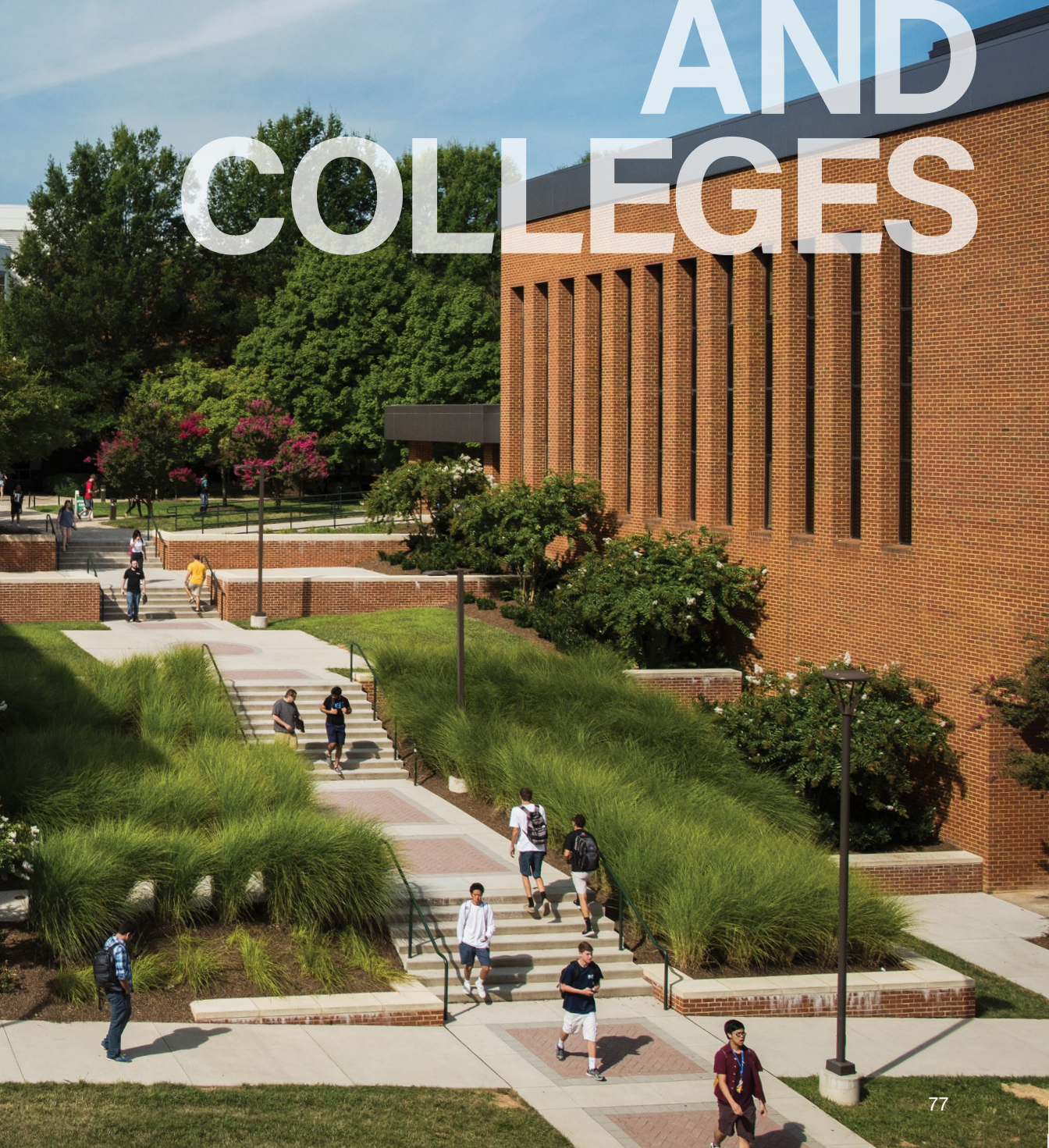
703-993-5323



masonrec@gmu.edu



ACADEMIC SCHOOLS AND COLLEGES



COLLEGE OF EDUCATION AND HUMAN DEVELOPMENT

The College of Education and Human Development is a vibrant and inclusive scholarly community promoting learning and development across the life span. Our three schools offer a diverse range of academic programs and transdisciplinary opportunities that integrate theory with practical experience to equip students with the knowledge, skills, and preparation needed to address the challenges of today's dynamic workforce. Our School of Education—the largest and most comprehensive in Virginia—is the alma mater for one third of teachers and administrators in Northern Virginia's world-class school systems. Our School of Sport, Recreation, and Tourism Management's comprehensive sport management, event management, tourism, and recreation programs engage students in real-world experiences in our nation's capital and provide graduates with a unique and competitive advantage in the marketplace. Our School of Kinesiology offers students a variety of experiential learning opportunities that prepare them to improve the health, movement, and performance of people in their communities.

CEHD Student and Academic Affairs

Your home for student communications and support, including

- General CEHD information
- Student involvement
- Academic success assistance
- Scholarships
- Appeals and exceptions to policy
- Student concerns and grievances

Email CEHDSAA@gmu.edu to learn more about any of these services.

ACADEMIC ADVISING

Find your advisor at cehd.gmu.edu/current-students/advising.

Office of Teacher Preparation

- Teacher preparation pathway advising for current and prospective students
- Licensure information
- Content area coursework review

Email preteach@gmu.edu for more information on teacher preparation.

Undergraduate Academic Majors

SCHOOL OF EDUCATION

Early Childhood Education for Diverse Learners, BSEd*
Elementary Education, BSEd
Physical Education, BSEd
Special Education, BSEd
Secondary Education, BSEd

SCHOOL OF SPORT, RECREATION, AND TOURISM MANAGEMENT

Recreation Management, BS
Sports Management, BS
Tourism and Events Management, BS

SCHOOL OF KINESIOLOGY

Kinesiology, BS

Minors and Undergraduate Certificates

Consider adding a minor or certificate to complement your interests and career goals. Visit cehd.gmu.edu/academics/undergraduate for more information.

American Sign Language Minor
Assistive Technology Minor
Coaching Minor
Early Childhood Education for Diverse Learners Minor
Educational Psychology Minor
Esports Management Minor
Event Technical Production Minor
Food and Beverage Management Certificate
Hospitality Management Minor
Kinesiology Minor
Mild Disabilities Minor
Personal Health and Wellness Minor
Recreation Management Minor
Secondary Education Certificates (Biology, Chemistry, Computer Science, Earth Science, English, Mathematics, Physics, 6-12)
Severe Disabilities Minor
Sport and American Culture Minor
Sport and Computer Game Design Minor
Sport and Conflict Resolution Minor
Sport Communication Minor
Sport Management Minor
Sports Analytics Minor
Tourism and Events Management Minor
Visual Impairment and Blindness Minor
Wine and Craft Beverage Management

Bachelor's/Accelerated Master's Programs

Many CEHD undergraduate programs have an associated accelerated master's program. Learn more at cehd.gmu.edu/bachelors-accelerated-masters-program.

 cehd.gmu.edu  703-993-2080

**New 2025–26 name: Inclusive Early Childhood Education, BSEd*

COLLEGE OF PUBLIC HEALTH

The College of Public Health (CPH) is home to the Departments of Global and Community Health, Health Administration and Policy, Nutrition and Food Studies, and Social Work, and the School of Nursing. We are located in Peterson Family Health Sciences Hall, which includes a community clinic, state-of-the-art nursing simulation and health informatics labs, and a high-tech nutrition kitchen where students can practice the skills they are learning within the classroom.

Our students prepare to be leaders in health care, public health, and social services, making them ready to solve the challenges of a rapidly changing health care environment. We have more than 1,800 undergraduate students enrolled in our six bachelor's degree programs and more than 1,350 graduate students enrolled in nearly 20 graduate degree programs and certificates.

The college emphasizes the importance of experiential learning so that students' education occurs both within and beyond the walls of the college. Student opportunities include collaborative research projects with faculty, professional development, networking with alumni, community service activities, health-related study-abroad courses, and the chance to gain leadership experience through student organizations and honor societies. For example, our Mason and Partners Clinics give our students valuable health care experience in an innovative multidisciplinary environment. At the same time, they provide more than \$90,000 a month in free health care to the most vulnerable members of our community.

CPH values diversity in its student body and faculty and provides an interdisciplinary education that enables students to develop analytical and creative thinking skills and to make well-founded ethical decisions. A team of professional and faculty advisors support and guide CPH students as they work toward their educational and professional goals.

CPH has strong relationships with many health care and human service agencies in the area. Students in CPH have the opportunity to complete a practicum course, and we have more than 200 active practicum sites for them to work with and gain hands-on experience that can lead to a job after graduation.

ACADEMIC MAJORS

Community Health, BS

Concentrations: Standard Program, Global Health, Clinical Science, Nutrition, Physical Activity and Public Health

Health Administration, BS

Concentrations: Health Systems Management, Assisted Living/Senior Housing Administration

Health Informatics, BS

Nursing, BSN

Pathways: Direct Entry Freshman, Direct Entry Transfers and/or current George Mason students, Accelerated Second Degree, RN to BSN, Co-Enrollment (Veteran and Non-Veteran), Direct Admission

Social Work, BSW

BACHELOR'S/ACCELERATED MASTER'S DEGREES

Bachelor's degree (any)/Health Informatics, MS

Bachelor's degree (any)/Nutrition, MS

Bachelor's degree (any)/Public Health, MPH

Health Administration, BS/Health Systems Management, MHA

ACADEMIC MINORS

Aging Studies

Food Systems

Global Health

Health and Social Policy

Health Information Technology

Health Systems Management

Nutrition

Physical Activity in Public Health

Public Health

Senior Housing Administration

Social Work

Health Practice Management Undergraduate Certificate

 publichealth.gmu.edu  703-993-1901

COLLEGE OF HUMANITIES AND SOCIAL SCIENCES

Offering more than 20 academic programs and numerous opportunities to blend the intellectual with the practical, the College of Humanities and Social Sciences (CHSS) prepares students to meet the needs of today's society and the demands of the future.

As a student in CHSS, you will develop career-relevant skills sought by employers, challenge yourself through academic pursuits and individual research projects, and take advantage of experiential learning opportunities.

Here are a few ways you can:

CONNECT TO THE COLLEGE

- Take on a leadership role as a CHSS Ambassador
- Join or start a club in your major
- Attend a lunch with the dean
- Attend one of our LinkUp events geared toward connecting students with our alumni and discussing career choices and paths

LEARN FROM EXPERIENCE

- Conduct individual research projects or fieldwork
- Complete honors in the major coursework
- Share your research with the George Mason community at our annual CHSS Undergraduate Research Symposium
- Study abroad to learn a new language, pursue an international internship, or fulfill degree requirements

DISCOVER CAREER GOALS

- Meet with our Career Services-CHSS liaison
- Enroll in one of our College-to-Career courses
- Pursue an internship in your field

For more information about our academic majors, concentrations, and more than 70 minors, please visit our website.

BACHELOR'S/ACCELERATED MASTER'S PROGRAMS

Many of our majors have an associated accelerated master's pathway. If you would like to learn more about these pathways, please visit chss.gmu.edu/programs/accelerated.

ACADEMIC MAJORS

Anthropology, BA
Art History, BA
Communication, BA
Creative Writing, BFA
Criminology, Law and Society, BA or BS
Economics, BA or BS
English, BA
Environmental and Sustainability Studies, BA*
Foreign Languages, BA

Concentrations: Arabic, Chinese, French, Korean and Spanish

Global Affairs, BA
History, BA
Human Development and Family Science, BA**
Individualized Study, BIS*
Integrative Studies, BA or BS*
Philosophy, BA
Psychology, BA or BS
Religious Studies, BA
Russian and Eurasian Studies, BA
Sociology, BA

* Offered by the School of Integrative Studies within CHSS

** Co-offered by the College of Education and Human Development

🏠 academicaffairs.chss.gmu.edu 📞 703-993-8725



COLLEGE OF SCIENCE

The College of Science (COS) plays the central role in undergraduate and graduate education and research in science and math at George Mason University. The college serves the local community and the nation by providing world-class leadership in a wide variety of areas important to modern society. All students within the college are strongly encouraged to take advantage of the many research opportunities available to them.

ACADEMIC MAJORS

Astronomy, BS*

Atmospheric Science, BS*

Biology, BA or BS*

Concentration for BA: Biological Illustration

Concentrations for BS: Biopsychology, Biotechnology and Molecular Biology, Environmental and Conservation Biology, Microbiology

Chemistry, BA or BS*

Concentrations: Analytical Chemistry, Biochemistry, Environmental Chemistry, Materials Chemistry

Computational and Data Sciences, BS*

Environmental Science, BS*

Concentrations: Conservation; Ecological Science; Environmental Health; Human and Ecosystem Response to Climate Change; Marine, Estuarine, and Freshwater Ecology; Wildlife

Environmental and Sustainability Studies, BA**

Forensic Science, BS*

Concentrations: Criminalistics, Forensic Biology, Forensic Chemistry, Interdisciplinary Forensic Science

Geography, BA or BS*

Concentrations (BA only): Environmental Geography, Geanthropology, Geoinformatics, Geospatial Intelligence, Health Geography, Urban Science

Geology, BA or BS*

Concentrations (BS only): Earth Surface Processes, Environmental Geoscience, Geology, Oceanography and Estuarine Science, Paleontology

Mathematics, BA or BS*

Concentrations (BS only): Actuarial Mathematics, Applied Mathematics, Data Science, Individualized, Mathematical Statistics, Pure Mathematics

Medical Laboratory Sciences, BS

Neuroscience, BS*

Physics, BS*

Concentrations: Applied and Engineering Physics, Astrophysics, Computational Physics

Undeclared COS

**Also available as a minor*

***Joint program with the College of Humanities and Social Sciences*

ACADEMIC MINORS

Astronomy

Astrophysics

Atmospheric Science

Bioinformatics

Biology

Chemistry

Computational and Data Sciences

Conservation Biology

Conservation Studies

Earth Science

Environmental Consulting

Environmental Policy

Environmental Science

Forensic Science

Geographic Information Science

Geography

Geology

Government Analytics

Mathematics

Mathematics for Costello College of Business

Neuroscience

Ocean and Estuarine Science

Paleontology

Physics

Renewable Energy

Science and Technology Policy

Scientific Leadership and Practice

STEM in Society

Sustainability Studies

Sustainable Enterprise

Urban Informatics

 science.gmu.edu  703-993-9532

COLLEGE OF VISUAL AND PERFORMING ARTS

Our College of Visual and Performing Arts (CVPA) students regularly perform, create, exhibit, and develop unique and inspired art—in whatever form that takes. Each program features a wide range of discipline-based technique courses and academic preparation in the history and theory of the art form. Many classes within CVPA are also open to non-majors, and numerous courses fulfill Mason Core requirements.

An audition, portfolio, or writing sample review is required for acceptance into most CVPA majors.

A Community of Artists

CVPA students have many ways to express their creativity:

- The CVPA Residential Learning Community for first-year students and Arts Residential Learning Community for upper-level students
- Navigation Press—artists work directly with students
- Mason Players and theatrical productions are **open to all George Mason students** for both technical positions and casting
- Music lessons and many ensembles, including the Green Machine, are also **open to all George Mason students**
- Free student tickets to performances at the Center for the Arts (cfa.gmu.edu/tickets/free-student-tickets)
- Fall Film Showcase and spring Mason Film Festival
- Senior Game Design Expo
- Mason Dance Company performances throughout the year, highlighted by the Spring Dance Gala

Schools and Programs in the College

SCHOOL OF ART (art.gmu.edu)

Faculty and students in the School of Art work together and across disciplines to experiment and challenge conventional thinking in a hands-on adaptive curriculum. We offer concentrations in graphic design or studio arts, including photography, printmaking, painting, drawing, and sculpture.

COMPUTER GAME DESIGN (game.gmu.edu)

Computer game design students use state-of-the-art technology to create their own games. Because our program leads to a BFA, our approach goes beyond basic coding and programming to incorporate graphic design elements, animation, and game theory. Students work in a team environment but specialize in what speaks to them.

SCHOOL OF DANCE (dance.gmu.edu)

Dance majors train and perform with the rigor of a conservatory. The program also offers courses in a variety of dance styles, plus many global dance experiences for all university students.

FILM AND VIDEO STUDIES (favs.gmu.edu)

The Film and Video Studies Program trains students to take a project from conception through creation, production, and post-production in a variety of film and video styles. Students can choose optional pathways in cinematography, directing, editing, producing, screenwriting, or sound.

REVA AND SID DEWBERRY FAMILY SCHOOL OF MUSIC (music.gmu.edu)

Dewberry School of Music students learn from active performers, conductors, and composers who are among the most distinguished experts in their fields. Instruction is rigorous, yet conducted in a nurturing environment.

SCHOOL OF THEATER (theater.gmu.edu)

The School of Theater explores and expresses the human spirit through the study of drama's historical, contemporary, and cultural traditions; training in the craft; and the presentation of plays.

ARTS MANAGEMENT (artsmanagement.gmu.edu)

The arts management minor is open to CVPA and art history majors. Arts management offers many career paths that rely on a strong foundation in one or more art forms and requires specific knowledge and skills in administration and management.

Accelerated Master's Programs

Undergraduate CVPA majors in the School of Art and the Dewberry School of Music lead into certain master's degree programs—in art education with licensure (MAT), graphic design (MA), and music performance (MM). Any bachelor's degree at George Mason can lead to an accelerated master of arts (MA) in arts management. See cvpa.gmu.edu/academics/accelerated-programs for full details.

🏠 cvpa.gmu.edu 📞 703-993-5572

DONALD G. COSTELLO COLLEGE OF BUSINESS

The Donald G. Costello College of Business is ranked in the top 10 percent of the nation's undergraduate business schools and offers a bachelor of science degree in business with innovative concentrations. The Costello College of Business also offers several options for a minor for business and nonbusiness majors, as well as one undergraduate certificate program in accounting. In addition, there is an advanced accelerated accounting program for students in the accounting concentration to complete the required coursework for a bachelor's in business and a master's degree in accounting in four years. The Costello College of Business programs are designed to prepare graduates for work in a rapidly changing and competitive marketplace with local, regional, and global companies. With George Mason's location in Northern Virginia and proximity to Washington, D.C., combined with the assistance of the Costello College of Business's own Career Services and Student Success and Academic Services staff, students are also afforded exceptional opportunities to gain practical experience and global engagement opportunities to complement their academic coursework.

ACADEMIC ADVISING

The Costello College of Business has a dynamic team of professional academic advisors available to help students navigate their undergraduate business degree.

CAREER SERVICES

A wide variety of career services are provided specifically for Costello College of Business students by a dedicated team of professionals who are prepared to help students through their career development process. Visit Enterprise Hall, call **703-993-2140**, or email **mycareer@gmu.edu** for more information.

UNDERGRADUATE ACADEMIC CONCENTRATIONS

Accounting
Business Analytics
Finance
Financial Planning and Wealth Management
Management
Management Information Systems
Marketing
Operations and Supply Chain Management

UNDERGRADUATE CERTIFICATES

Accounting

ACCELERATED MASTER'S PROGRAMS

Accounting, BS and MS
Advanced Accelerated Master's Program in Accounting,
BS and MS (four-year program)
Business Analytics, BS and MS
Finance, BS and MS
Management, MS (for nonbusiness majors only)
Real Estate Development, MS

UNDERGRADUATE ACADEMIC MINORS

Business (for nonbusiness majors only)
Business Analytics
Energy Transition Management
Entrepreneurship
Finance
Government Contracting
International Business
Management Information Systems
Marketing
Operations and Supply Chain Management
Organizational Conflict Resolution
Real Estate Development
Wine and Craft Beverage Management

GRADUATE PROGRAMS

Accounting, MS
Business, PhD
Business Analytics, MS
Finance, MS
Management, MS
Master of Business Administration, MBA
Real Estate Development, MS
Technology Management, MS

📍 Enterprise Hall, Room 008 ✉ masonbus@gmu.edu
🏠 business.gmu.edu 📞 703-993-1880



SCHAR SCHOOL OF POLICY AND GOVERNMENT

At the Schar School of Policy and Government, future leaders learn to tackle real-world problems from prominent and dedicated faculty members, many of whom are active practitioners in government and politics in Washington, D.C. Whether you take a diplomacy course with a retired ambassador, study money markets and economic policy with a Pulitzer Prize-winning *Washington Post* columnist, or study abroad to learn about oil politics in the Middle East with an expert from a nongovernmental organization, you will learn from and study alongside the very best.

OPPORTUNITIES TO BUILD EXPERTISE

In and out of the classroom, you can cultivate your connections and take your academic experience to the next level:

- Internships on Capitol Hill and with law firms, nonprofits, and federal agencies
- Undergraduate Research Assistant Program
- Pre-Law advising
- Global Politics Fellows
- Peace Corps Prep Program
- Accelerated master's option
- Faculty-led Learning Communities (LCs)
- Short-term international courses

ACADEMIC MAJORS

GOVERNMENT AND INTERNATIONAL POLITICS, BA

This degree program is ideal for students who are interested in a career path in political analysis, international relations and security, public service, campaigns, or research. As a student in the program, you will learn to critically examine political issues, prominent actors, and processes in government, foreign policy, and international affairs. As governments and politics around the world respond to the rapid advancement of technology, this degree program equips students to face new challenges boldly and effectively.

PUBLIC ADMINISTRATION, BS

Do you dream of a career where you can change the world and advance the public good through work, policy advocacy, or service in federal, state, or local government? The public

administration bachelor's degree program reflects a community of talented and professional individuals who are driven to make a difference. Students in the program gain the analytical and decision-making skills to design, manage, and implement policies and programs that address complex challenges facing communities locally and around the world. Majors graduate with a firm understanding of what it means to effectively manage a public or nonprofit organization and with the budgetary, statistical, and information systems skills that are in such high demand in government positions.

INTERNATIONAL SECURITY AND LAW, BA

Traditional and nontraditional security threats affect the lives of millions around the globe every day. This dynamic program combines national and international security and law and is designed to help students understand how to most effectively respond to these threats—from weather disasters to cyber attacks to nuclear proliferation and more.

Whether you aspire to lead a government or nonprofit organization, develop public policies and programs, create innovative consulting solutions, or provide expert analysis, you will graduate from the Schar School prepared to meet the challenges of a changing world.

🏠 schar.gmu.edu 📞 703-993-1400

📍 Aquia Building, Room 337

SCHOOL OF INTEGRATIVE STUDIES

Connecting the classroom to the world! School of Integrative Studies students address contemporary social and environmental challenges. Based in the College of Humanities and Social Sciences, the school offers small, seminar-style classes that emphasize critical and creative thinking, effective communication, and diversity in thought. Students connect academic interests with hands-on learning to prepare for a life and career with meaning and impact. The school prepares graduates to assume leadership roles in the fields of business, law, government, health care, education, and the nonprofit sector, among others.

ACADEMIC MAJORS

HUMAN DEVELOPMENT AND FAMILY

SCIENCE, BA

INDIVIDUALIZED STUDY, BIS

Concentrations

Individualized

Early Childhood Education Studies

INTEGRATIVE STUDIES, BS OR BA

Concentrations

African and African American Studies, BA

Childhood Studies, BA

Education Studies, BA

Individualized Study, BA or BS
(consult an advisor)

Integrated Conservation, BS

Leadership and Organizational
Development, BA

Legal Studies, BA

Life Sciences, BS

Emphasis Areas

Pre-Dentistry, Pre-Medicine,

Pre-Occupational Therapy, Pre-

Optometry, Pre-Pharmacy, Pre-

Physical Therapy, Pre-Physician's

Assistant, Pre-Veterinary

Social Justice and Human Rights, BA

Social Science for Education, BA

Women and Gender Studies, BA

ENVIRONMENTAL AND

SUSTAINABILITY STUDIES, BA

Concentrations

Business and Sustainability

Climate Change and Society

Conservation and Sustainability

Environmental Policy and Economics

Equity and Environmental Justice

Sustainable Food and Agriculture

ACADEMIC MINORS

Childhood Studies

Conservation Studies

Human Development

and Family Science

Leadership

Nonprofit Studies

Social Justice and Human Rights

Well-Being

 integrative.gmu.edu





JIMMY AND ROSALYNN CARTER SCHOOL FOR PEACE AND CONFLICT RESOLUTION

Challenges are everywhere: polarized social and political issues, disputes within families and workplaces, limited resources, and complex issues of violence, inequality, and justice. Internationally recognized in the field of peace and conflict studies, we prepare you to understand and creatively address these real-world problems.

As a bachelor's student, you'll be able to select one of seven multidisciplinary concentrations, selecting courses from across George Mason to tailor your degree to match your personal and professional goals. Additionally, our interdisciplinary faculty are committed to moving the educational experience beyond the classroom. Practical experience is important, and we'll prepare you with skills and expertise through service and experiential learning opportunities that will prepare you for a meaningful career. Our alumni are leaders and innovators working in academia, government agencies, international peace-building organizations, and the private sector.

BE PREPARED, MAKE A DIFFERENCE

- The No. 1 public university for peace and conflict resolution studies in the United States
- The chance to develop in-demand job skills with 100 percent of students completing field experience
- International learning experiences, with more than 50 percent of students studying abroad
- Small class sizes and a close-knit community
- Alumni who are leaders and innovators in management, peacebuilding, education, development, human resources, nonprofit organizations, and mediation
- Exceptional student support that is consistently recognized for excellence in advising and student services

DEGREE PROGRAMS

Bachelor of Arts, Bachelor of Science, Accelerated Master's

ACADEMIC MINORS

Conflict Analysis and Resolution
Conflict Resolution Education (*Currently Pending*)
Organizational Conflict Resolution
Peace Engineering
Sport and Conflict Resolution

CONCENTRATIONS

Building Peace in Divided Societies—Learn how societies with a history of conflict seek to transform relationships, violence, and injustice

Collaborative Leadership—Build skills for improving the capacity of leaders to work with conflict and manage change

Environmental Conflict and Collaboration—Examine how communities are dealing with environmental issues, and develop skills to promote collaborative solutions

Global Engagement—Study the dynamics of global conflict resolution and its impact on international relations

Interpersonal Dynamics—Develop knowledge and skills for transforming conflict in relationships, families, and organizations

Justice and Reconciliation—Focus on relationships between human rights, justice, and conflict resolution

Political and Social Action—Examine ways people organize to effect change in their societies

🏠 carterschool.gmu.edu 📞 703-993-4165

✉️ ugradcar@gmu.edu

COLLEGE OF ENGINEERING AND COMPUTING

The College of Engineering and Computing offers degrees in many of today's most rewarding and challenging fields. Students explore the frontiers of technology, gain valuable work experience, and make professional contacts while earning their degrees. After graduation, alumni have many choices, including pursuing advanced graduate programs, heading straight to work for some of the area's high-tech companies, or starting their own businesses.

ACADEMIC MAJORS

Applied Computer Science 703-993-1530

Concentrations: Bioinformatics, Business Management, Business Marketing, Computer Game Design, Geoinformatics, Software Engineering, Technology Policy

Bioengineering 703-993-5846

Concentrations: Biomedical Imaging and Devices, Biomaterials and Nanomedicine, Computational Biomedical Engineering, Healthcare Informatics, Neurotechnology and Computational Neuroscience, Pre-Health

Civil and Infrastructure Engineering 703-993-5607

Computer Engineering 703-993-1569

Concentrations: Computer Networks, Embedded Systems, Hardware and System Security, Internet of Things, Power and Energy Systems, Robotics

Computer Science 703-993-1530

Cyber Security Engineering 703-993-1502

Electrical Engineering 703-993-1569

Concentrations: Controls and Robotics, Communications and Signal Processing, Electronics, Embedded Systems, Internet of Things, Power and Energy Systems, Sustainable Data Center Engineering

Information Technology 703-993-3565

Concentrations: Cloud Computing, Cybersecurity, Database Technology and Programming, Health Information Technology, Network and Telecommunications, Web Development

Mechanical Engineering 703-993-5383

Concentrations: Aerospace Engineering, Engineering Mechanics, Microfabrication, Robotics, Specialized Facilities

Statistics 703-993-3645

Concentrations: Applied Statistics, Mathematical Statistics, Sports Analytics, Statistical Analytics

Systems and Industrial Engineering 703-993-1670

CEC Undeclared and Undecided 703-993-1511

ACADEMIC MINORS

Aviation Flight Training and Management 703-993-1670

Bioengineering 703-993-5846

Computer Science 703-993-1530

Data Analysis 703-993-3645

Electrical and Computer Engineering 703-993-1569

Environmental Engineering 703-993-1675

Information Technology 703-993-3565

Mechanical Engineering 703-993-5383

Software Engineering 703-993-1530

Statistics 703-993-3645

STEM in Society (CEC) 703-993-5778

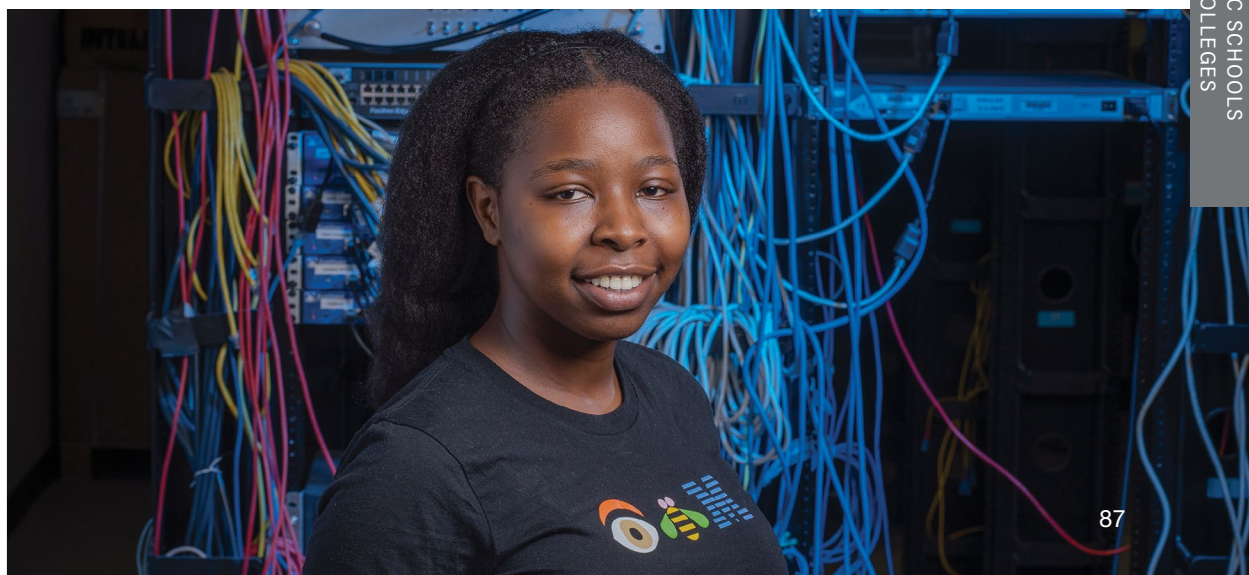
Sustainable Systems Engineering

Systems Engineering and Operations Research
703-993-1670

📍 Nguyen Engineering Building, Room 2500

📞 703-993-1511 🏠 cec.gmu.edu

✉ cecugrad@gmu.edu



ACADEMIC MINORS



College of Education and Human Development

American Sign Language
Assistive Technology
Coaching
Early Childhood Education
for Diverse Learners
Educational Psychology
Esports Management
Event Technical Production
Hospitality Management
Kinesiology
Mild Disabilities
Personal Health and Wellness
Recreation Management
Severe Disabilities
Sport and American Culture
Sport and Computer Game Design
Sport and Conflict Resolution
Sport Communication
Sport Management
Sports Analytics
Tourism and Events Management
Visual Impairment and Blindness
Wine and Craft Beverage Management



College of Engineering and Computing

Aviation Flight Training and
Management
Computer Science
Data Analysis
Environmental Engineering
Information Technology
Peace Engineering
Mechanical Engineering
Software Engineering
Statistics
Sustainable Systems Engineering
Systems Engineering



College of Humanities and Social Sciences

African and African American Studies
Ancient History and Mediterranean
Archaeology
Anthropology
Arabic
Art History
Asia-Pacific and Northeast Asian Studies
Brain, Body, and Behavior
Childhood Studies
Chinese
Classical Studies
Clinical Psychology
Communication
Community and Public Writing
Conservation Studies
Criminology, Law and Society
Design Thinking
Developmental Psychology
Digital Humanities
Digital Media and Web Design
Dynamic Publishing
Economics
English
Ethics and AI
Folklore and Mythology
Forensic Psychology
French
German Studies
Global Affairs
Health, Disease, and Culture
Health Communication
Health Psychology
History
Human Development and Family
Science
Immigration Studies
Industrial/Organizational Psychology
Intelligence Studies
Islamic Studies
Italian Studies
Japanese Studies
Journalism
Judaic Studies
Korean Studies
Latin American Studies
Latin
Leadership

LGBTQ Studies
Linguistics
Medieval Studies
Middle East Studies
Museum Studies
Native American and Indigenous
Studies
Nonprofit Studies
Philosophy
Philosophy and Law
Philosophy for Social Change
Photojournalism
Political Communication
Political Philosophy
Professional and Technical Writing
Professional Experience in
Communication
Psychology
Religious Studies
Russian
Screen Cultures
Social Justice and Human Rights
Sociology
Spanish
Sport and American Culture
Sport Communication
STEM in Society
Sustainability Studies
Teaching English as a Second
Language
Well-Being
Women and Gender Studies



College of Public Health

Aging Studies
Food Systems
Global Health
Health and Social Policy
Health Information Technology
Nutrition
Public Health
Senior Housing Administration
Social Work

ACADEMIC MINORS



College of Science

Astronomy
 Astrophysics
 Atmospheric Science
 Bioinformatics
 Biology
 Chemistry
 Computational and Data Sciences
 Conservation Biology
 Conservation Studies
 Earth Science
 Environmental Consulting
 Environmental Policy
 Environmental Science
 Forensic Science
 Geographic Information Systems
 Geography
 Geology
 Government Analytics
 Mathematics
 Mathematics for Costello College
 of Business Students
 Neuroscience
 Ocean and Estuarine Science
 Paleontology
 Physics
 Renewable Energy Interdisciplinary
 Science and Technology Policy
 Scientific Leadership and Practice
 STEM in Society
 Sustainability Studies
 Sustainable Enterprise
 Urban Informatics



College of Visual and Performing Arts

Animation
 Arts and Social Change
 Arts Management
 Audio Production
 Computer Game Design
 Dance Appreciation
 Design and Technical Theater
 Digital Media and Web Design
 Dynamic Publishing
 Ethnomusicology
 Event Technical Production
 Film and Video Studies
 Global Dance
 Graphic Design
 Illustration
 Jazz Studies
 Music for Well-Being
 Music
 Music Composition
 Music Pedagogy
 Music Technology
 Photography
 Photojournalism
 Sport and Computer Game Design
 Studio Art
 Theater
 Theater Performance
 Web Design



Jimmy and Rosalynn Carter School for Peace and Conflict Resolution

Conflict Analysis and Resolution
 Conflict Resolution Education (pending approval)
 Organizational Conflict Resolution
 Peace Engineering
 Sport and Conflict Resolution



Schar School of Policy and Government

American Government
 Global Systems
 International Security
 International/Comparative Studies
 Legal Studies
 Political Philosophy
 Public Policy and Management
 Urban and Suburban Studies



Donald G. Costello College of Business

Business Analytics
 Business
 Energy Transition Management
 Entrepreneurship
 Finance
 Globally Responsible Business Practices
 Government Contracting
 International Business
 Management Information Systems
 Marketing
 Operations and Supply Chain Management
 Organizational Conflict Resolution
 Real Estate Development
 Wine and Craft Beverage Management

ACADEMIC ESSENTIALS





MASON CORE

What is the Mason Core?

Mason Core is George Mason's general education program that builds the foundation for the George Mason Graduate—an engaged citizen and well-rounded scholar who is prepared to act. Mason Core is a set of required courses that create the foundation of a student's undergraduate degree. It provides a breadth of liberal education courses, complementing the depth of knowledge and skills students build in their majors and minors.

HOW IS MASON CORE CONNECTED TO YOUR MAJOR?

The courses taken in Mason Core will help develop the skills needed to achieve the learning required in all academic majors and prepare you for a career in your chosen field. Research has shown that most employers, regardless of the field, have high expectations that their college-educated employees will come to the workplace well prepared to write and speak clearly, think critically, and solve problems creatively. If you have not yet selected a major, Mason Core courses can help in choosing a major, while also beginning to develop the skills and habits of thinking that will stay with you throughout your life.

For more information about all Mason Core options, courses, and credits, visit the University Catalog at catalog.gmu.edu or Mason Core's website at masoncore.gmu.edu.

How is the Mason Core completed?

Mason Core begins in your first year at George Mason, starting with the Foundation-level courses, which provide key skills needed for academic success. Exploration courses provide a breadth of learning across the university. Integration courses are upper-level courses that are designed to integrate knowledge and skills learned from Foundation and Exploration courses into your major. Academic advisors assist you in selecting Mason Core courses, which makes working with an advisor important to create the best possible Mason Core experience. It is critical that you meet with your advisor regularly as you continue toward graduation.

Foundation Requirements

Foundation courses emphasize skills—in writing, speaking, working with numbers, and technology—that can be applied to any major and career.

WRITTEN COMMUNICATION (LOWER) (3 CREDITS)

The first-year composition course (ENGH 101 or equivalent) is the first step in a three-course sequence to build your writing skills. This course develops your ability to use written communication as a means of discovering and expressing

ideas and meaning. You will learn to use writing as a way of thinking by analyzing and responding to a variety of writing situations and genres that engage a range of audiences.

ORAL COMMUNICATION (3 CREDITS)

Oral Communication focuses on developing your ability to create and deliver a variety of message types. You will learn to monitor and ethically practice your own verbal and nonverbal communication to become an effective communicator, demonstrating respect and consideration for the multitude of audiences with whom you will communicate in a range of intercultural, personal, and professional contexts. You will learn to use oral communication as a way of thinking and learning, as well as to share ideas.

QUANTITATIVE REASONING (3 CREDITS)

Quantitative Reasoning courses develop critical thinking skills using mathematical and statistical concepts (i.e., formulas, graphs, tables, models, and schematics) to analyze and make sense of data, patterns, and relationships. By learning to evaluate problems using quantitative reasoning, you will be better equipped to make well-supported decisions in personal, academic, and workplace situations.

INFORMATION TECHNOLOGY AND COMPUTING (3 CREDITS)

The purpose of the Information Technology and Computing requirement is to ensure that you achieve an essential understanding of information technology infrastructure encompassing systems and devices, learn to make the most of the web and other network resources, protect your digital data and devices, take advantage of the latest technologies, and become a more sophisticated technology user and consumer.

Exploration Requirements

Exploration courses ensure that you experience subject matter and ways of knowing in a variety of fields so that you are better able to synthesize new knowledge, respond to fresh challenges, and meet the demands of a complex world.

You may wish to complete your Exploration-level requirements with courses that are marked with a Just Societies “flag.” These courses are specifically designed to help you learn how to interact effectively with others from all walks of life, including those with backgrounds and beliefs that differ from your own. These courses focus on understanding key terms commonly used in society and the workplace today, engaging with your peers effectively while using these terms, and collaboratively identifying processes for change when warranted. If you are interested in gaining this type of additional knowledge and expanded skills, you are encouraged to work closely with your advisor to identify Exploration courses with this flag.



ARTS (3 CREDITS)

Through this category, you will develop an understanding of the relationship among artistic process, a work's underlying concept, and the social and cultural contexts associated with the work. Mason Core courses in filmmaking, visual, and performing arts stress generative, inquiry-based learning through hands-on experience in the studio environment. In art history courses, you will visually analyze artworks within a historical context, addressing the relationship between personal and cultural creativity.

GLOBAL CONTEXTS (3 CREDITS)

The goal of the Global Contexts requirement is to enable you to explore global connections through a disciplinary lens and to understand how global systems have created both interdependence and inequalities that engaged citizens must understand in order to work toward an equitable and sustainable future.

GLOBAL HISTORY (3 CREDITS)

By focusing on historical experiences that reflect the diversity of George Mason's student body, you will be able to see how your family and community fit within, and contribute to, global history from the pre-modern period to our present day. The courses will offer a long-term historical perspective on structural issues challenging our world today, including demographic and environmental changes, national and global inequalities, and the underrepresentation of marginalized groups. You will gain an understanding of how interconnections and inter-dependencies have been forged through the global movement of people, pathogens, goods, and ideas.

LITERATURE (3 CREDITS)

Courses in the Literature category develop your ability to read for comprehension, detail, and nuance; identify specific literary qualities of language as employed in texts you read; analyze the ways specific literary devices contribute to the meaning of a text; identify and evaluate the contribution of the social, political, historical, and cultural contexts in which a literary text is produced; and evaluate a critical argument in your own and others' writing.

NATURAL SCIENCE (7 CREDITS)

Natural Science courses engage you in scientific exploration, foster your curiosity, enhance your enthusiasm for science, and enable you to apply scientific knowledge and reasoning to personal, professional, and public decision-making. At least one of the courses you take in this category must include a laboratory experience.

SOCIAL AND BEHAVIORAL SCIENCE (3 CREDITS)

In this category, you will develop the ability to explain how individuals, groups, or institutions are influenced by contextual factors; demonstrate awareness of changes in social and cultural constructs; and use appropriate methods and resources to apply social and behavioral science concepts, terminology, principles, and theories in analysis of significant human issues, past or present.

Integration Requirements

Integration courses represent the culmination of knowledge and skills learned throughout your time at George Mason, both through Mason Core and within your major. You will further refine the communication, critical thinking, and problem-solving skills that are imperative for your career, for engaging in the world around you, and for lifelong learning.

WRITTEN COMMUNICATION (UPPER) (3 CREDITS)

Advanced Composition (ENGH 302), the second course in George Mason's writing sequence, builds on learning in your first-year composition course (ENGH 101 or equivalent) through advanced rhetorical analysis, research, and writing oriented toward investigating, engaging with, and responding to meaningful disciplinary questions in a variety of academic and nonacademic contexts.

WRITING-INTENSIVE COURSE REQUIREMENT (3 CREDITS)

Writing-Intensive (WI) Courses, which are taught within your chosen major, serve as the third course in George Mason's integrated writing curriculum. Students use writing to investigate questions and discover new knowledge, develop and refine their thinking through interactive writing processes, and learn field-specific ways to communicate their discoveries to a range of audiences. Faculty devote significant class time to instruction on writing in the major and provide constructive feedback on student drafts. Students further refine the writing skills required to succeed in their chosen fields.

MASON APEX (3 CREDITS)

The Mason Apex courses or, in some cases, sequence of courses will provide you with a high-impact culminating experience that requires you to utilize critical thinking skills and prepares you for lifelong learning. You will be challenged to draw connections across your George Mason undergraduate academic experience. Mason Apex courses provide you opportunities to apply and communicate your knowledge, and involve integrative, applied, or experiential projects.

 masoncore.gmu.edu



NOTES

[illegible]

ACADEMIC PLANNING WORKSHEET

Name: _____ G-number: _____

To enhance your academic advising experience during Orientation, please take the time to review the George Mason advising information in this handbook as well as online. Additionally, please complete this planning form to facilitate the exchange of information with your academic advisor.

STEP 1: Please tell us what major you are enrolled in or, if undecided, what major(s) you may be thinking about.

STEP 2: Review your academic transcript and let us know if there is any missing coursework (last semester classes, AP/IB, or other exams or courses):

TYPE OF CREDIT	AP/IB/CLEP OR COURSE	SCORE/GRADE	SCHOOL NAME	GEORGE MASON EQUIVALENT
AP/IB/CLEP/Transfer				
AP/IB/CLEP/Transfer				
AP/IB/CLEP/Transfer				
AP/IB/CLEP/Transfer				
AP/IB/CLEP/Transfer				

MASON CORE is the university's general education requirement. It is equivalent to roughly one-third of your credits and is distributed among fundamental courses in writing, math, communication, and information technology, as well as those in the humanities, physical and biological sciences, social sciences, the arts, and more. The topic areas remain constant across majors, but students have the flexibility to select courses of interest from an approved list to complete each requirement. Additionally, these requirements may be met via transfer, AP, or IB credits. Many majors will have lower-level requirements specific to the degree that may also meet a Mason Core area requirement. For more specific information about Mason Core, please search "Mason Core" and/or review the Mason Core pages in your Orientation handbook.

MAJOR REQUIREMENTS: All majors have a set of required courses that are specific to that program. These courses range from lower-level courses appropriate for freshmen and sophomores to upper-level courses that are geared toward juniors and seniors. Some courses have prerequisites, which are a specific course or courses that must be taken first. Additionally, some major requirements may also meet a Mason Core requirement.

COLLEGE OR SCHOOL REQUIREMENT: Certain colleges have a set of requirements that are unique to their majors. For instance, the College of Humanities and Social Sciences requires all their students completing a bachelor of arts degree to meet intermediate proficiency in a foreign language. These students are also asked to complete an additional social science course beyond the one needed to fulfill the Mason Core, a philosophy or religious studies course, and a non-Western culture course. Please check with your advisor to make sure that you meet the requirements specific to your college.

ELECTIVES: These are credits that don't meet a specific requirement, such as a Mason Core, major, or college requirement. They are credits that go toward those necessary to complete the minimum number of credits needed to graduate, typically 120, and may be lower- or upper-level credits. This could be individual courses or those courses going toward a minor. It is all dependent upon your degree. Check with your advisor.

MASON CORE	SATISFIED	1ST CHOICE	2ND CHOICE
Written Communication			
Oral Communication			
Quantitative Reasoning			
Information Technology and Computing			
Arts			
Global Contexts			
Global History			
Literature			
Natural Science Lab			
Natural Science (lab or not)			
Social and Behavioral Science			

STEP 3: Review your academic transcript and place an “X” in the satisfied column for any requirement(s) that you have met via AP, IB, or transfer credit. Once those requirements have been identified, review and select courses for your remaining Mason Core. Please identify more than one course for each area in the event you need an option beyond your first choice.

STEP 4: Review course descriptions and identify preferred courses in the spaces below. For minimum full-time status (12 credits) you will need approximately four classes. Your schedule should be a mix of Mason Core, major and/or college requirements, and exploration courses or electives.



OFFICE OF THE UNIVERSITY REGISTRAR

Detailed information regarding the steps to registration and waitlisting can be found at registrar.gmu.edu. Before registering via Patriot Web (patriotweb.gmu.edu), you will need to have accessed your Patriot Pass account and obtained a George Mason username and secure password. If you have not yet done so, visit password.gmu.edu.

What Can You Do Online?

The Office of the University Registrar website contains useful tools to assist you through the course registration process.

- **View the Academic Calendar** for specific **registration activities and dates** including the last day to add and drop a course at registrar.gmu.edu/calendars.
 - **View the *University Catalog*** for specific university information on academic policies, tuition and fees, course offerings, and admissions and graduation requirements at catalog.gmu.edu.
 - **View your time ticket** for registration on Patriot Web. Select “Student Services,” “Registration,” “Registration and Planning,” select a term, and then scroll down to view your time ticket.
 - **Order an official transcript** at registrar.gmu.edu/students/transcripts.
 - **Order an Enrollment Verification:**
 1. Log in to Patriot Web.
 2. Select Student Services.
 3. Select Student Profile.
 4. Select Order Enrollment Verification.
 5. If this is your first time logging on to Myhub, you will be required to create an account and set up Multifactor Authentication.
Continue as follows:
 - a. Log in to Myhub Service.
 - b. Follow subsequent prompts to receive an authentication code.
 - c. Enter the code and click on Verify.
 6. Once you are logged on to Myhub, a variety of options will be displayed:
 - a. Scroll down and select the Self-Service box on the lower right side.
 - b. Below the Download an Enrollment Certificate title select George Mason University from the Select a School drop-down, then select a certificate:
 - i. All Enrollment Certificates
 - ii. Current Enrollment Certificates
 - iii. Advanced Registration Certificate
 7. Once selected, click on the Download Certificate button to receive your certificate.
- **View your holds on Patriot Web.** Click “Student Services,” “Student Records,” and then “View Holds.”
 - **View common registration error messages** at registrar.gmu.edu/topics/common-registration-error-messages.
 - **Learn about in-state tuition eligibility** and request a tuition reclassification at registrar.gmu.edu/students/domicile.
 - **Submit the Veterans Registration Reporting Form (VRRF)** each semester to have classes certified for veteran education benefits.
 - The Office of the University Registrar has many forms online. Visit registrar.gmu.edu/forms for a full list of all available forms.
 - **View Patriot Web tutorials** at go.gmu.edu/patriot-web-tutorials to learn how to navigate Patriot Web and register for classes.

Full-Time Student Classification

Full-time undergraduate students are classified as those students enrolled in 12 or more credits per semester. Completed hours are defined as a combination of all credits earned at the university plus credits transferred from other institutions or obtained by testing. Please note that different criteria for full-time status may apply for tuition, verification, and financial aid purposes.

CLASS CODE	COMPLETED CREDIT HOURS
Freshman	0-29
Sophomore	30-59
Junior	60-89
Senior	90 or more

Graduation Information

DEGREE EVALUATION

George Mason's degree evaluation system tracks your progress toward degree completion. Detailed information regarding the steps to access and understand your degree evaluation can be found at registrar.gmu.edu/students/degree-evaluation.

Questions about your degree evaluation should be directed to your academic advisor.

GRADUATION

Graduation is not an automatic process. The first step is to view your Degree Evaluation on Patriot Web to ensure that all your degree requirements will be met by the conferral date. If you have questions about how courses are applied in your degree evaluation, you should contact your academic advisor. Apply to graduate on Patriot Web by the application deadline. Deadlines and other important information can be found at **registrar.gmu.edu/students/graduation**.

Check your George Mason email regularly for important messages and be sure to complete the Student Exit Survey. The final graduation review to determine whether you have completed all degree requirements is conducted by the Registrar's Office. Transcripts showing conferred degrees will be available after the conferral date as degrees are evaluated and posted. Diplomas will be mailed six to eight weeks after each conferral date.

 registrar.gmu.edu

NOTES

[illegible]

MASON ONLINE

Did you know that any George Mason student can take an online course? It's true! If you're currently a George Mason University student, then you can take online courses. There is no separate application process. Registration and financial aid work in the exact same way for your online and face-to-face courses. The instructors who teach online are the same instructors who teach face-to-face.

Whether you work, intern, commute, or live on campus, online courses offer an active and collaborative learning environment while allowing for greater flexibility in your academic schedule. For a full list of available online courses, visit masononline.gmu.edu/courses.

To find out what technologies you will need and how to get started with online courses, visit masononline.gmu.edu/online-learning-basics.

Online Learning Terminology

DELIVERY MODE

What percentage of the course is delivered online?

Hybrid online: 51 to 99 percent of scheduled class time is online. The remaining class time is face-to-face.

Fully online: 100 percent of scheduled class time is online. Orientations, tests, exams, or labs may be face-to-face.

INTERACTION MODE

When do the instructor and students interact?

Synchronous: Same time, different locations. All students join the instructor for scheduled online class meetings using teleconferencing tools like Blackboard Collaborate.

Asynchronous: Different times, different locations. All class instruction is available online with no set class meetings. Students still follow an established schedule of due dates.

Earn a Degree Online

George Mason currently offers more than 60 fully online and hybrid undergraduate and graduate programs! Online degree options include (but are not limited to)

UNDERGRADUATE

Applied Science, Cybersecurity Concentration, BAS

Applied Science, Health, Wellness, and Social Services Concentration, BAS

Applied Science, Technology and Innovation Concentration, BAS
Business, BS

Computer Game Design, BFA

Global Affairs, BA

Health Administration, BS

Information Technology, BS

International Law and Security, BS

Psychology, BS

GRADUATE

Accounting, MS

Applied Industrial and Organizational Psychology, MPS

Applied Information Technology, MS

Biodefense, MS

Bioinformatics and Computational Biology, MS

Business Administration, MBA

Conflict Analysis and Resolution, MS

Curriculum and Instruction, MEd

Data Analytics Engineering, MS

Economics, MA

Education Leadership, MEd

Family Nurse Practitioner Program, MSN

Health Informatics, MS

Health Systems Management, MHA

Learning Design and Technology, MS

Social Work, MSW

Special Education, MEd

Systems Engineering, MS

Teaching English as a Second Language (Curriculum and Instruction, MEd)

For a full list of online programs, visit masononline.gmu.edu/programs.

CONTACT US

✉ online@gmu.edu 🏠 masononline.gmu.edu



ACADEMIC ADVISING AT GEORGE MASON

Vision

Academic advising at George Mason University is an integral part of the educational process that enhances student learning and development by supporting, teaching, and connecting students to curricular and cocurricular experiences relevant to becoming an exemplary George Mason graduate: an engaged, reflective citizen and well-rounded scholar who is prepared to act.

Mission

The academic advising community at George Mason University commits to creating ongoing, personal, and purposeful educational partnerships with students and colleagues. Advisors contribute to student success by providing resources and by teaching students to develop the skills required to become lifelong learners capable of effective self-advocacy.

Advisor Responsibilities

- Support students in setting and reaching educational goals.
- Teach students to engage in a process of self-reflection and self-discovery, guiding them to find degree pathways that match their interests, skills, and abilities.
- Clearly and accurately communicate academic requirements and policies.
- Connect students to campus resources and cocurricular opportunities to integrate learning and experience.

Student Responsibilities

- Be responsible for understanding and reviewing academic and degree policies, regulations, and procedures.
- Use the Mason Degree Audit to track your degree progress (registrar.gmu.edu/degreeaudit).
- Meet with an academic advisor each semester to discuss academic, educational, and career goals. Use Patriot Connect (connect.gmu.edu) to schedule appointments with your academic advisor.
- Be responsible for knowing how to find important institutional and college policies.

Contact your academic advisor if you need additional assistance.

Advising at George Mason is unique to each department. Students should contact their department to identify how advising is handled for their major. You may search for more information about advising and identify your academic advisor at advising.gmu.edu.



GEORGE MASON ADVISING TIMELINE

Before Classes Begin

- ☐ Familiarize yourself with the academic deadlines and calendar. Scan here to find the Academic Calendars.
- ☐ Confirm payment of your George Mason account or establish a payment plan if necessary (A deadline exists and missing it could lead to the prevention/delay of future registration and late fees).
- ☐ Review degree and major requirements.
- ☐ Identify advisor contact information and reach out to address any questions.
- ☐ Identify your financial aid counselor, if applicable.
- ☐ Schedule math and foreign language placement testing if required.
- ☐ Submit final transcripts, vaccination records, and any other remaining documents. Transfer students who do not submit all prior college transcripts by the middle of their first semester at George Mason will have a hold placed on their account preventing them from registering for second semester classes.



First Month

- ☐ Meet with an advisor if you have questions or are experiencing any challenges.
- ☐ Attend Welcome Week events (connect with your major and students with similar interests).
- ☐ Familiarize yourself with academic policies (i.e., selective withdrawal, dropping courses, etc.).
- ☐ Familiarize yourself with academic support resources and opportunities (Learning Services, the Writing Center, math tutoring).
- ☐ Review all course syllabi for detailed and specific information. Also, identify instructors' contact hours. Notify them of any conflict with your schedule so that, if necessary, alternate arrangements can be made.
- ☐ Review your academic transcript for any previous coursework. If not posted by the end of the first month, please contact an advisor, complete the Transfer Credit Inquiry Form via bit.ly/TransferCreditInquiryForm, and submit it to credeval@gmu.edu.
- ☐ Get involved and connected on campus.

Second Month

- See your advisor to discuss the current semester and begin planning for the next. Some advisors require appointments, others have walk-in advising, and some have a mix of both. Please know what your advisor or department requires so you can plan accordingly.
- Identify the selective withdrawal deadline.
- Review midterm grades (middle to end of month).
- Attend the George Mason Career Fair.
- Take math or language placement tests if required, but not completed.

Third Month

- Follow up with your advisor to clarify requirements, registration questions, or academic difficulty.
- Create an academic plan that outlines all your required classes until you graduate. If you need help, search 4-Year Graduation Plans. Review it with your advisor.
- Review your next semester registration time ticket.
- Talk with your advisor about courses elsewhere if thinking about studying at another institution during the summer/winter. This action requires advance approval with specific deadlines.
- Address any holds on your account that may prevent registration.
- Register for classes as soon as your time ticket allows.

Fourth Month

- Review the final exam schedule and discuss any conflicts with your instructor immediately.
- Discuss any academic concerns with your advisor and make sure you are registered for next semester.
- Prepare for and take your finals.

After Finals/End of Semester

- Review all your grades and contact/email instructors immediately with any questions or concerns.
- Review next semester's registration and verify eligibility for courses based on any prerequisites that may not have been met.
- Review your academic standing and contact your advisor with any questions.
- Review next semester's academic calendar.

Search the following terms on **gmu.edu** for more information:

- Academic Advising
- Majors @ Mason
- *University Catalog*
- Mason Core
- University Career Services
- GetConnected
- Four-Year Graduation Plans
- Learning Services
- Math tutoring
- Writing Center
- Counseling and Psychological Services
- Student Health Services
- Patriot Web
- Math placement test
- Foreign language placement test
- **Patriot Connect**



PLACEMENT TESTING

Foreign Language

If you are pursuing a bachelor of arts degree in the College of Humanities and Social Sciences or the College of Science, you must prove intermediate proficiency in a foreign language. Some programs within the College of Visual and Performing Arts also have a language requirement. This requirement may be fulfilled by

- completing an intermediate 202 language course at George Mason or the equivalent at another college or university,
- earning a qualifying score on one of the tests listed at admissions.gmu.edu/exams, or
- taking the foreign language placement test offered by the Department of Modern and Classical Languages.

For more information on testing, visit mcl.gmu.edu/placement-testing or call 703-993-1220.

The Department of Modern and Classical Languages offers language placement tests in Arabic, Chinese, French, German, Korean, Latin, Russian, and Spanish during Orientation. Students interested in Italian and Japanese testing need to contact the MCL Department directly to make testing reservations. It is recommended that students with two or more years of experience with a foreign language take the corresponding placement test. Students with less than two years or no experience do not need to take the placement test and should instead enroll in a 110 or 115 language course. Students should take less than one hour to complete testing. All students should arrive with their photo identification and George Mason G number.

English

The English 101 Exam is a three-hour online optional skills assessment essay exam. Any admitted student who has not transferred equivalent credit from another university or has not taken ENGH 101 is eligible to take the exam. If you receive a pass, you will not be awarded credits but you will meet your ENGH 101 requirement. If you receive a no-pass, you will not be able to retake the exam and will be required to complete the course. Summer exam (given between May 1 and August 22) results will not be available until after the exam closing date and before the drop deadline for fall. There is no cost to take the exam and registration is required. Contact Stacey Remick (sremicks@gmu.edu) for more information, or visit composition.gmu.edu/waivers/engh-101 for the schedule and registration process.

English 302 Exemption Portfolio and Exam Option

The English 302 exemption involves a two-part process. Students must schedule a meeting with Jennifer Janisch (jjanisch@gmu.edu) before submitting a portfolio. If your portfolio receives a pass, you are required to complete the exam. You must pass the exam to meet the ENGH 302 requirement. You will not be awarded credits, but you will meet the ENGH 302 requirement for graduation. Prerequisites for submitting a portfolio include a minimum 3.00 cumulative GPA and completion of at least 30 credits (transferred or completed). Additionally, you must have your ENGH 100-level and literature requirements completed or transferred in at the time of submission. There is no cost. Contact Stacey Remick (sremicks@gmu.edu) for more information. For portfolio requirements and information on the process, please visit composition.gmu.edu/waivers/waiver-of-english-302.

Math

Most George Mason students, regardless of major, will need to take at least one math course to graduate; however, the math course required varies from major to major. Each initial math course has a prerequisite and requires a particular score on the math placement test to enroll. Therefore, most students need to take the math placement test. If you are not taking a math course in the fall semester, you do not need to take the placement test during Orientation. The test is offered during Orientation as a courtesy, but it is given throughout the academic year, as well as during the summer. Math placement test scores are valid for one year and must be attained before registering for the desired math course. We encourage you to talk to your advisor about whether you need to take the math placement test, as well as when it would be best for you to take it.

For more information, please visit math.gmu.edu.

Reva and Sid Dewberry Family School of Music

The Reva and Sid Dewberry Family School of Music offers placement tests in theory, sight singing, ear training, and keyboard skills. These tests are optional for incoming freshman music majors but are required for incoming transfer students who plan to major in music. Prior notice to the School of Music is not necessary; you may simply show up and take the exams. These exams are only available the semester you enter George Mason and cannot be scheduled for a later time. Exams are typically offered in August on the last Saturday prior to the start of fall classes. For full information on placement test scheduling, please visit the School of Music website, select "Academics," and then select "Advising."



**IT
STARTS
WITH
YOU!**

PATRIOT SUCCESS

Whether you are a freshman or a senior, keeping track of how you are doing in your college career is important. Taking this survey helps you identify programs and opportunities that interest you, and lets the Patriot Success team know if you need some additional support.

For more information, visit PatriotSuccess.gmu.edu.



STUDENT INFORMATION PRIVACY (FERPA)

The Family Educational Rights and Privacy Act of 1974 (FERPA) is a federal law that protects the privacy of student education records and restricts how and when their education records can be disclosed. Education Records are records directly related to a student that are maintained by George Mason University, or a party acting on behalf of the university. For additional information about FERPA, including the Annual Notification of Rights under FERPA, please visit ferpa.gmu.edu.

What Families Need to Know

The best way for families to stay involved and informed about their student's progress is to keep open lines of communication with their student. When a student attends a postsecondary institution such as George Mason, educational records belong to the student and not the parent or family member. This means George Mason students control access to all of their educational records and must provide written consent if parts of an educational record are to be disclosed to a third party, including parents or family members, unless the release is to the parent of a dependent student, as required by § 23.1-1303.B.5 of the Code of Virginia, or the disclosure meets a qualified exception under FERPA.

GRADES

George Mason does not mail grades to students or to families. Grades are available for students to view online through Patriot Web. Students can request an official transcript be sent to an address of their choice for a fee. Students may order their official transcript or print unofficial transcripts via Patriot Web.

ACADEMIC ADVISING

In accordance with the FERPA law, school officials can speak only to a student regarding their record. An exception can be made in the instance of a student who wants to release portions of their educational record to a third party and has submitted a Consent to Release Student Information (FERPA

Form). This form is available on the Office of the University Registrar's website at registrar.gmu.edu/forms. Be aware that consent remains in effect until revoked. To revoke a release, submit another Consent to Release Student Information (FERPA Form) and select "remove an existing release."

FINANCIAL AID AND STUDENT ACCOUNTS

The Offices of Student Accounts and Financial Aid will speak to students at any time regarding their account; however, if the student would like either office to speak to a parent or family member, the student is required to submit a Consent to Release Student Information (FERPA Form), located on the Office of the University Registrar's website, at registrar.gmu.edu/forms. Be aware that consent remains in effect until revoked. To revoke a release, submit another Consent to Release Student Information (FERPA Form) and select "remove an existing release."

STUDENT CONDUCT

Educational records affiliated with the Office of Student Conduct are covered by FERPA and require a separate Privacy Waiver to authorize the discussion of a particular case or situation to someone other than the student, such as a family member.

A Privacy Waiver can be filed only by a student once a conduct situation arises; waivers cannot be submitted preemptively. The Privacy Waiver expires at the end of the particular case or situation for which it was signed, or a date of the student's choosing. The waiver can be found at studentconduct.gmu.edu under the "Contact Us" tab.

The Office of the University Registrar can assist with FERPA-related questions. Contact ferpa@gmu.edu with questions or concerns.

ACADEMIC RECORDS FAQ

My transfer credits are not posted. What do I need to do?

The Office of Admissions evaluates transfer credit at the point students confirm their intent to enroll at George Mason. Once you have signed up for Orientation, you should be able to view your Transfer Credit Evaluation under Student Records on Patriot Web. If credits are missing from your record, please first make sure you have submitted your final transcript and allow seven business days after the transcript has been received. If, after that time, no credits are posted, please contact credeval@gmu.edu. Please note that during the busy periods, like January and the summer months, evaluations may take longer. If some, but not all, credits have been posted and it has been more than seven business days since your transcript or document was received by George Mason, please submit the Transfer Credit Inquiry Form to credeval@gmu.edu.

You can find the Transfer Credit Inquiry Form via bit.ly/TransferCreditInquiryForm.

How can I change my name in university records?

To change your name, you must access registrar.gmu.edu/forms and choose the "Change of Personal Information" form. There, you can request a change or update to your name, birth date, or social security number.

Can I get permission to take classes at another institution? What do I do after I have taken the class?

You should speak to your academic advisor for guidance before making a request for permission to enroll in a course at another institution. You will need to appeal to the academic dean's office of the course in which you wish to enroll in elsewhere. The Request for Permission to Study Elsewhere form can be found at registrar.gmu.edu/forms. If the request is approved, the Office of the University Registrar must receive the form before the course begins. On course completion, an official transcript should be sent from the transfer institution directly to the university via mail at George Mason University, Office of Admissions, 4400 University Drive, MS 3A4, Fairfax, VA 22030 or electronically to ugtrans@gmu.edu.

How do I order a copy of my transcript?

Please visit registrar.gmu.edu/records/transcripts for steps on ordering your official transcript.

How can I change my address in university records?

You may use Patriot Web to make any changes to your address. Visit patriotweb.gmu.edu and click on "Personal Information" and "Personal Profile" to make any needed updates to your address.

Why has my change of grade not been processed?

Please check your student email address for information regarding your case submission. If you have any additional questions regarding your request, please follow up with the instructor or the course department for additional assistance.

How can I get a copy of a class syllabus?

To obtain course syllabi, you will need to contact the academic department.

How can I get a copy of class descriptions from the previous year?

For recent academic years, this information can be found at catalog.gmu.edu. You can find this information for specific academic years by accessing catalog.gmu.edu/archives.

How do I receive credit for AP, IB, CLEP, or high school dual enrollment coursework?

If you are eligible for AP, CLEP, IB, or high school dual enrollment transfer credit, official transcripts should be provided to the Office of Admissions (see gmueu.edu/transfer/credits/process for instructions) during the application process. At gmueu.edu/freshman/requirements/exam-credit you can access a complete list of transfer credit by exam. We highly recommend that you finalize all your transfer credit within the first academic year of enrollment at George Mason.

TRANSFER CREDIT INFORMATION

Transfer Credit Evaluations for first-year students are available on Patriot Web within approximately 10 days after the student submits their enrollment deposit and for transfer students within 10 days after an admission decision notification has been sent. Students will receive an email with instructions on how to access their evaluation.

All transfer students are responsible for providing a complete and final transcript from each previous institution to the Office of Admissions. A FINAL transcript is defined as the transcript that includes ALL coursework, ALL grades, and ALL degrees awarded from your previous institution. Re-admitted students will receive a new transfer credit evaluation based upon current transfer credit policy. A previous transfer credit evaluation will not be applicable to the new catalog year. The university reserves the right to revise a transfer credit evaluation.

Things to Remember About Your Transfer Credit

- Transfer credit is granted only from institutions accredited by a **George Mason-recognized*** U.S. institutional accrediting agency or international equivalent with an earned grade of "C" or better.
- Developmental coursework does not transfer.
- Credits from institutions that operate on a quarter system calendar are transferred by multiplying the quarter hours by two-thirds in order to equal semester credits.

**You can find a list of George Mason-recognized U.S. institutional accrediting agencies here: gmu.edu/transfer/credits/accredited-universities.*

- Not all transfer credits will apply toward every major.
- If you are eligible for AP, CLEP, IB, or high school dual enrollment transfer credit, official transcripts should be sent directly from the organization, college, or university to George Mason's Office of Admissions at **ugtrans@gmu.edu** during the application process. A complete list of transfer credit by exam is located at **gmu.edu/freshman/requirements/exam-credit**.

Important Recommendations

- All new transfer students are responsible for meeting with their academic advisor to ensure that their final transfer credit evaluation is correct and that they understand the way their transfer credit applies toward their degree program. Students should also ensure that they know how to run and read their individual degree evaluation.
- If you are missing credit or have questions about your credit, contact **credeval@gmu.edu**.
- To see the list of current course equivalencies, go to the transfer equivalency matrix at **gmu.edu/transfer/credits/credit-matrix**.

Academic holds will be placed on all new transfer students who have not provided the required final transcript by the end of the add/drop deadline. An academic hold will prevent registration for the following semester.



TRANSFER CREDIT EVALUATION WORKSHEET

TRANSFER EQUIVALENCY WORKSHEET			
Date: 11/2/23 3:32		George Mason University	
Student: Patriot, Mason	G#####	Fall 2024	Undergraduate
College: Engineering and Computing			
Major: Information Technology			
Program: BS Information Technology			
Mason Core Waiver: Lower-Level			

1. ADVANCED PLACEMENT EXAMS						
ATTENDANCE PERIOD		ATTENDANCE	EVALUATION			
1 SP18			6/4/19			
TRANSFER COURSES				GEORGE MASON EQUIVALENT		
COURSE	TITLE	CR.HRS	GRD	COURSE	TITLE	CR.HRS
HIST UH 5	AP United States History	6	5	HIST 122	Development of Modern America	3
				HIST 121	Formatn of Amer Republic	

2. COLLEGE ABC						
Attendance Period		Attendance Dates	Eval. Date	Transfer Degree Awarded		
1 FA19-SU22		08/19/19-08/08/22	8/7/23	AS		
Transfer Courses				George Mason Equivalent		
COURSE	TITLE	CR.HRS	GRD	COURSE	TITLE	CR.HRS
ITE 221	PC Hardware & OS Architecture	3		A		
ITN 100	Intro/Telecommunications	3	A	IT 105	IT Architecture Fundamentals	3
				IT ----	IT Elective	3
ART 100	Art Appreciation	3	A	ARTH 101	Intro to Visual Arts	3
CST 110	Intro to Communication	3	A	COMM 101	Interperson and Group Interact	3
ECO 201	Principles of Macroeconomics	3	B	ECON 104	Macroeconomic Principles	3
HIS 111	Hist of Wrld Civ I	3	A	HIST L387	Topics in Global History	3
HIS 121	U.S. History I	3	B	HIST 121	Formatn of Amer Republic	3
ITE 115	Intro Computer Appl/Concepts	3	B	IT 103	Intro to Computing	3
MTH 261	Applied Calculus I	3	B	MATH 108	Intro Calc:Business Applicatio	3
PHY 101	Intro to Physics I	4	B	PHYS 103	Princ/Devel Modern Phys	4
SDV 100	College Success Skills	1	A	UNIV 100	Freshman Transition	1

3. COLLEGE XYZ						
Attendance Period		Attendance Dates	Eval. Date			
1 FA19-SU22		08/19/19-08/08/22	8/7/23			
Transfer Courses				George Mason Equivalent		
COURSE	TITLE	CR.HRS	GRD	COURSE	TITLE	CR.HRS
LA 248	Business Law	3	B	BULE ----	Business Elective	3
MKT 301	Princ of Marketing	3	C	MKTG 303	Principles of Marketing	3
PH 200	Intro to Philosophy	3	B	PHIL 100	Intro to Philosophy	3
TOTAL TRANSFER CREDIT HRS:		47.00		TOTAL GEORGE MASON CREDIT HOURS:		47.00

NOTE: Some departments require a syllabus review prior to awarding transfer credit. Please refer to the Transfer Credit Policy posted on the university website for information on the acceptance of transfer credit and the appeal process. All transfer credit, including credit by exam, should be submitted to the Office of Admissions prior to the end of your first semester of enrollment. George Mason University reserves the right to modify a transfer credit evaluation at any time.



#WELCOME2MASON