

NEW STUDENT GUIDE

2026–2027



ACADEMIC CALENDAR

| FALL 2026 | |
|---|---|
| First Day of Classes | Monday, August 24 |
| Last Day to Add (Census) | Monday, August 31 |
| Labor Day (University closed) | Monday, September 7 |
| Last Day to Drop (100% refund) | Tuesday, September 8 |
| Last Day to Drop (50% refund) | Tuesday, September 15 |
| Unrestricted Withdrawal Period | Wednesday, September 16–Tuesday, September 29 |
| Midterm Evaluation Period for Full Semester 100-200 Level Classes | Monday, September 21–Friday, October 16 |
| Selective Withdrawal Period–Undergraduate Only | Wednesday, September 30–Monday, October 26 |
| Fall Break (Classes do not meet) | Monday, October 12 |
| Election Day (Classes do not meet) | Tuesday, November 3 |
| Thanksgiving Recess | Wednesday, November 25–Sunday, November 29 |
| Last Day of Class | Monday, December 7 |
| Reading Day(s) | Tuesday, December 8 |
| Examination Period | Wednesday, December 9–Wednesday, December 16 |
| University Commencement | Thursday, December 17 |
| SPRING 2027 | |
| MLK Day (University closed) | Monday, January 18 |
| First Day of Spring Classes | Tuesday, January 19 |
| Last Day to Add (Census) | Tuesday, January 26 |
| Last Day to Drop (100% refund) | Tuesday, February 2 |
| Last Day to Drop (50% refund) | Tuesday, February 9 |
| Unrestricted Withdrawal Period | Wednesday, February 10–Tuesday, February 23 |
| Midterm Evaluation Period for Full Semester 100-200 Level Classes | Monday, February 15–Friday, March 19 |
| Selective Withdrawal Period–Undergraduate Only | Wednesday, February 24–Monday, March 29 |
| Spring Recess (Classes do not meet) | Monday, March 8–Sunday, March 14 |
| Last Day of Class | Monday, May 3 |
| Reading Day(s) | Tuesday, May 4 and Sunday, May 9 |
| Examination Period | Wednesday, May 5–Wednesday, May 12 |
| University Commencement | Thursday, May 13 |

UNIVERSITY SERVICES

Admissions

703-993-2000

Campus Information and Visitor Services

703-993-1000
(Voice and Text)

Contemporary Student Services

masoncss@gmu.edu

Counseling and Psychological Services

703-993-2380

Disability Services

703-993-2474

Housing and Residence Life

703-993-2720

International Programs and Services

703-993-2970

Language Testing

703-993-1220

Mason Recreation

703-993-5323

Math Placement Testing

703-993-4237

New Student and Family Programs

703-993-2475

Student Accounts

703-993-2000

Student Financial Aid

703-993-2000

Student Health Services

703-993-2831

Student Services Center

703-993-2000

Student Success Coaching

703-993-2470

Student Support and Advocacy Center

703-993-3686

Visit registrar.gmu.edu/calendars for the most up-to-date academic calendar or scan the QR code:





FINAL STEPS TO BECOME A GEORGE MASON PATRIOT

Once you return home from Orientation, be sure to review these items and ensure you have completed all the final steps for success as a George Mason Patriot. Welcome to the Mason Nation!

- **Set up your George Mason email and Patriot Pass** if you have not done so already. Visit mail.gmu.edu for instructions.
- **Submit your final transcripts and test scores** to the Office of Admissions at ugtrans@gmu.edu.
- **Access financial aid** information on Patriot Web. Additional information can be found at gmU.edu/financial-aid.
- **Submit the George Mason Certificate of Immunization** by the required deadline. See page 37 for more information.
- **Review placement exam requirements** at advising.gmu.edu/newstudent.
- **Get your Mason ID.** Visit masoncard.gmu.edu to learn about your physical or mobile digital options.
- **Purchase a parking permit** at parking.gmu.edu. Permits can be purchased after course registration is complete starting in July.
- **Plan for Move-In Day.** Find more information at housing.gmu.edu. Find off-campus housing at och.gmu.edu.
- **Reserve copies of your textbooks** to rent or own through the campus bookstore at gmU.bncollege.com.
- **Attend the Preamble**, August 20-23, 2026. Open to all new students, freshmen, and transfers.
- **Plan your Welcome2Mason schedule.** For a list of events and a calendar, visit welcome2mason.gmu.edu.
- **Take the CliftonStrengths Assessment** before classes begin by visiting strengths.gmu.edu.
- **Register for George Mason's Resilience Badge** at wellbeing.gmu.edu/students/student-resilience-badge.

For help in navigating any other steps, feel free to contact New Student and Family Programs at orientu@gmu.edu or 703-993-2475.



Scan here to access the new student orientation website.

Table of Contents



NEW STUDENT RESOURCES

| | |
|---|----|
| History and Traditions | 6 |
| Campus Events and Athletics | 8 |
| Navigating Fairfax and Washington, D.C. | 10 |
| New Student Programs | 12 |
| Student Success Coaching | 14 |
| Stay Connected as a George Mason Family | 16 |
| Get Involved | 16 |
| Stay Informed | 17 |
| Connect with Us! | 17 |
| Parent and Family Council | 18 |
| Mason Family Connection | 19 |
| SNAP Benefits | 20 |
| PNC | 21 |
| University Studies | 22 |
| Wear Mason | 23 |

LIFE AT GEORGE MASON

| | |
|--|----|
| University Life | 26 |
| Involvement and Engagement | 27 |
| George Mason's Regional Locations | 27 |
| Student Involvement | 28 |
| Center for Leadership and Intercultural Engagement (CLIE) | 29 |
| Student Media | 30 |
| Mason Recreation | 31 |
| Housing and Residence Life | 32 |
| Freedom of Expression at George Mason University | 33 |

| | |
|---|----|
| Belonging at George Mason | 34 |
| Contemporary Student Services | 34 |
| Office of International Programs and Services | 34 |
| LGBTQ+ Resources Center | 35 |
| First-Gen+ Center | 35 |
| Women and Gender Studies | 35 |
| Support Services | 36 |
| Counseling and Psychological Services | 36 |
| Student Health Services | 36 |
| Immunization Requirements | 37 |
| Learning Services | 38 |
| Disability Services | 38 |
| Student Support and Advocacy Center | 38 |
| Student Rights and Responsibility | 40 |
| Code of Student Conduct | 40 |
| Academic Standards | 40 |
| Nondiscrimination and Harassment | 41 |
| Title IX | 41 |
| Title VI and Title VII | 41 |
| Harassment and Discrimination Resources | 42 |
| Patriots Against Hazing | 42 |
| Meet the Patriot Leaders | 44 |
| Handshake | 49 |
| Well-Being at George Mason | 50 |
| Mason Chooses Kindness | 51 |
| Libraries | 52 |
| Office of Student Creative Activities and Research (OSCAR) | 53 |
| Global Education Office | 54 |
| Mason 360 | 56 |
| Smithsonian-Mason School of Conservation | 57 |



UNIVERSITY SERVICES

| | |
|---------------------------------------|----|
| Student Services Center | 60 |
| Student Accounts | 61 |
| Student Financial Aid | 62 |
| Information Technology Services | 64 |
| Timely Care | 65 |
| Shop Mason | 66 |
| Parking and Transportation | 68 |
| Mason Card Office | 70 |
| Mason Dining | 71 |
| Print and Mail Services | 72 |
| Mason Arts | 75 |
| Fairfax Campus Map | 76 |
| George Mason Ready | 78 |
| Mason Recreation | 79 |

ACADEMIC SCHOOLS AND COLLEGES

| | |
|---|----|
| College of Education and Human Development | 82 |
| College of Public Health | 83 |
| College of Humanities and Social Sciences | 84 |
| College of Science | 85 |
| College of Visual and Performing Arts | 86 |
| Donald G. Costello College of Business | 87 |
| Schar School of Policy and Government | 88 |
| School of Integrative Studies | 89 |
| Jimmy and Rosalynn Carter School for Peace and Conflict Resolution | 90 |
| College of Engineering and Computing | 91 |
| Academic Minors | 92 |

ACADEMIC ESSENTIALS

| | |
|--|-----|
| Mason Core | 96 |
| Academic Planning Worksheet | 100 |
| Office of the University Registrar | 102 |
| Mason Online | 104 |
| Academic Advising at George Mason | 105 |
| George Mason Advising Timeline | 106 |
| Placement Testing | 108 |
| Patriot Success | 109 |
| Student Information Privacy (FERPA) | 110 |
| Academic Records FAQ | 111 |
| Transfer Credit Information | 112 |
| Transfer Credit Evaluation Worksheet | 113 |

The programs and services offered by George Mason University are open to all who seek them. George Mason does not discriminate on the basis of race, color, religion, ethnic national origin (including shared ancestry and/or ethnic characteristics), sex, disability, military status (including veteran status), sexual orientation, gender identity, gender expression, age, marital status, pregnancy status, genetic information, or any other characteristic protected by law. After an initial review of its policies and practices, the university affirms its commitment to meet all federal mandates as articulated in federal law, as well as recent executive orders and federal agency directives.

[f /masonnsfp](https://www.facebook.com/masonnsfp)

[@masonnsfp](https://www.instagram.com/masonnsfp)





New Student Resources

HISTORY

GEORGE MASON'S STORY

1950s

1957

George Mason starts its journey as a two-year branch campus of the University of Virginia.



1970s

1972

George Mason College separates from UVA and becomes George Mason University.

1977

George Mason changes from a commuter school to a residential university.

1979

Arlington Campus opens.

1990s

1990

Center for the Arts opens.

1996

George Mason's track and field team wins division championship.

The George Mason statue is unveiled.

1997

Prince William Campus opens.

1960s

1964

George Mason College gets a permanent home in Fairfax.

1965

First Mason Day

1966

George Mason adopts green and gold as the official school colors.

George Mason College becomes a four-year college, though still a part of the University of Virginia.

1968

George Mason's first graduating class, which consists of 52 graduates, receives degrees.

1969

The Patriot is adopted as the official mascot.

1980s

1981

First International Week

1985

The Patriot Center opens.

George Mason's women's soccer team wins the national championship.





2010s

2013

George Mason joins the Atlantic 10 Conference.

Men's soccer, women's indoor and outdoor track and field, and George Mason baseball all win A-10 conference titles.

2015

The Patriot Center becomes Eagle Bank Arena.

Prince William Campus becomes the Science and Technology Campus.

2016

George Mason attains R1 very high research activity status.



THE FIGHT SONG—ONWARD TO VICTORY

The George Mason University Fight Song has been around for more than 25 years, but it has largely been an instrumental tune. In 2009, the Green Machine bandleader Michael "Doc Nix" Nickens wrote the new fight song, "Onward to Victory."

**Hail to George Mason!
Don your green
and gold!**

**We're going to sing for
George Mason, patriots
brave and bold!**

**We're going to cheer for
George Mason, proud
for the world to see!**

**We'll prove our honor
and might, and we'll
FIGHT, FIGHT, FIGHT!**

**As we march onward
to victory!**

**G! M! U! GMU! WHAAT?
GO GREEN, GO GOLD!
FIGHT! FIGHT! FIGHT!**

2000s

2004

George Mason releases the "Mason Star" athletics logo.

2006

George Mason's men's basketball team goes to the Final Four.



2020s

2020

George Mason welcomes President Gregory Washington.

George Mason shifts to fully virtual operation during the COVID-19 pandemic.

2021

New academic building Horizon Hall opens for start of spring 2021 classes.

The Enslaved People of George Mason Memorial is installed on Wilkins Plaza.

2022

The Arlington Campus becomes Mason Square.

George Mason celebrates 50 years as an independent university.

CAMPUS EVENTS

ANNUAL EVENTS HELD BY GEORGE MASON



SEPTEMBER 9/11 DAY OF SERVICE

Fraternity and Sorority
Recruitment and Intake
Get Connected Fair
IVth Night
Transfer Nation



OCTOBER FAMILY WEEKEND

Mason Madness
Student Government Elections
Kings Dominion Haunt Trip



NOVEMBER GOLD RUSH

HIV/AIDS Awareness
Fashion Show
Hunger and Homelessness
Action Week
First-Gen Week



FEBRUARY HOMECOMING

Black and African
Heritage Month
Winter Welcome2Mason



MARCH SPRING RECESS

Geek Week
Kings Dominion Trip
Women's History Month



APRIL MASON DAY

International Week
Student Government Elections
Asian American Heritage Month

TRADITIONS

GENERATION TO GENERATION

- Find the class sign that matches the year you started at George Mason and add your name.
- Rub the toe of the George statue for good luck.
- Wear George Mason gear on Fridays!
- Take photos at the George statue.
- Avoid stepping on the plaque.
- Paint a student organization bench.
- Explore the old campus tunnels.
- Decorate the George statue.
- Decorate your cap for graduation!
- Paint the George Mason cubes.



ATHLETICS

NCAA DIVISION I

- CROSS COUNTRY M/W
- BASKETBALL M/W
- TENNIS M/W
- SWIMMING AND DIVING M/W
- WRESTLING M
- TRACK AND FIELD M/W
- ROWING W
- BASEBALL/SOFTBALL M/W
- VOLLEYBALL W
- GOLF M
- LACROSSE W
- SOCCER M/W



NEW STUDENT BUCKET LIST

- Indulge at the Fairfax Chocolate Lovers Festival in February.
- Study with a friend and have coffee at De Clieu.
- Experience the Community Farmer's Market.
- Go hiking with some friends at Great Falls.
- Go ice skating at the Fairfax Ice Arena.
- Go shopping at Fair Oaks Mall.
- Have lunch in Old Town Fairfax.
- Sign up for an Outdoor Adventures trip.
- Have a picnic at Burke Lake.
- Attend the City of Fairfax Fall Festival in October.

NAVIGATING

FAIRFAX, VIRGINIA

Historic Fairfax

The City of Fairfax has a rich history. There are perfectly preserved historic buildings (including the site of the first fatality of the Civil War and a Civil War home featuring soldier graffiti) that many visitors find intriguing. The Fairfax Museum and Visitors Center is another fan favorite that everyone should check out!

Shop and Eat

Old Town Fairfax is filled with great restaurants, cafés, and stores! With options like Thai, Japanese, Mediterranean, and more, you will be able to find a place to eat that will leave everyone full and satisfied! Don't forget to check out patriotperks.gmu.edu to see where you get a discount in Fairfax and beyond!

NAVIGATING

WASHINGTON, D.C.

The District of Columbia

The Smithsonian museums are free and open to the public every day of the year except Christmas Day. With 19 museums and galleries, you will be able to find something to keep you entertained, occupied, and educated. With our campus so close to D.C., you won't want to miss the opportunity to absorb the rich history and culture provided by the Smithsonian exhibits!

Shop and Eat

The nation's capital is filled with history, monumental buildings, and striking landmarks, but it is also home to some of the greatest shops and restaurants around. From Indian, Creole, Mongolian, and Chinese, to traditional American cuisine, it can all be found in Washington, D.C. DuPont Circle, Union Station, U Street, and Chinatown are some fan favorite locations where you can experience delicious food and unique shops. Lastly, don't forget about the many tasty dessert locations the city has to offer.



NEW STUDENT BUCKET LIST

- Ride the Metro into the city.
- Watch the Washington Commanders at Northwest Stadium.
- Visit the national monuments.
- Find the hidden George Mason statue.
- Go to a Nationals game.
- See the Smithsonian's ZooLights from November to January.
- Watch a free concert at the Yards Park.
- Celebrate the Cherry Blossom Festival in the spring.
- Find a favorite food truck.
- Take a free tour of the White House or U.S. Capitol.
- Do a cupcake crawl in Georgetown.
- Go for a run on the National Mall.

NEW STUDENT PROGRAMS

WELCOME HOME, PATRIOTS!

NEW STUDENT BUCKET LIST

- Take a class in a subject you know nothing about.
- Go see a performance in the Center for the Arts with a free student ticket.
- Visit the Presidents Park Greenhouse.
- Attend Mason Madness.
- Take the CliftonStrengths Assessment.
- Travel to a new country with the Global Education Office.

The Preamble

August 20-August 23, 2026

Kick off your college experience at George Mason with the newest group of Patriots! There are a number of activities to help support your transition and first weekend on campus, such as the Opening Convocation in EagleBank Arena, social and academic programming, and the fall kick-off event. Visit welcome2mason.gmu.edu/thepreamble for more information.

Welcome2Mason

August 24-September 30, 2026

Join the rest of the George Mason community as we welcome new students to a new year. Welcome2Mason events span the first few weeks of the fall semester and provide countless opportunities for students to get involved, meet new people, and learn more about our beautiful campus. For a complete list of scheduled events, visit welcome2mason.gmu.edu. Signature events include Step Expo, George Mason Transfer Nation, academic department receptions, Involvement Fair and on-campus job fairs, "Ask Me" tents across campus, and other welcome activities.





First-Year Connections

Looking to meet new people, explore the Washington, D.C., area, and make the most of your first year at George Mason? **First-Year Connections** offers fun, meaningful opportunities to connect with fellow first-year students, engage with faculty and staff, and discover campus resources that support your success. From wellness activities and social gatherings to off-campus adventures, each event is designed to help students build community and feel at home. More details are available at fyc.gmu.edu.

Staying Informed on Campus

Staying connected to campus life is an important part of a successful first year at George Mason. From events and activities to resources and deadlines, there are several tools designed specifically to help first-year students stay informed, involved, and supported throughout the year.

- **First Year Focus e-Newsletter:** All first-year students are automatically enrolled in this e-newsletter and will receive it twice a month. It highlights upcoming events, important dates, campus resources, and opportunities curated especially for new students.
- **Mason360 "First-Year" Event Tag:** Mason360 is the go-to platform for campus events and organizations. Look for the "First-Year" event tag to quickly find programs created with first-year students in mind.
- **New Student and Family Programs Instagram:** Follow @masonsnsp on Instagram for timely reminders, event spotlights, and helpful tips from New Student and Family Programs to keep you connected all year long.
- In addition to these resources, first-year students are encouraged to visit the First-Year Student Resources website at orientation.gmu.edu/first-year-student-resources. This site serves as a central hub for information on academics, involvement, wellness, and support services, making it a helpful reference throughout your transition to George Mason.

NEW STUDENT BUCKET LIST

- Attend International Week events.
- Learn the fight song.
- Join or create an organization or club on campus.
- Play on an intramural sports team.
- Take a group fitness class at the AFC or RAC.
- Hang out at the Ridge.
- Try every dining hall on campus at least once.



Success Coaches Are on the Journey with You!

Success Coaches discuss all aspects of a student's life that affects their overall well-being in a 45-60 minute appointment. The Success Coaching team helps students identify resources to enhance their Patriot experiences, and develop and implement personal, career, and academic goals.

Student Success Coaching helps students:

- Develop and set short- and long-term goals;
- Support skill building (e.g., time management, self-advocacy, boundary setting, etc.);
- Support overall well-being;
- Assist with action planning;
- Provide students feedback, support, and best practices to sustain goals and
- Support resource navigation.

All George Mason University students have access to a Success Coach and should meet with their Success Coach at least twice a semester to support their success journey.

Schedule an appointment through Patriot Connect to connect with your Success Coach today!



Success Coaches offer in-person and virtual appointments, scan below to find your Success Coach!



mycoach@gmu.edu



703-993-2670



coaching.gmu.edu



MyMasonCoach



University Life
STUDENT SUCCESS COACHING
George Mason University.



STAY CONNECTED AS A GEORGE MASON FAMILY

New Student and Family Programs (NSFP) recognizes the important role families play in their student's development and success at George Mason. NSFP serves as a liaison between the university and families and provides an outlet for families to become active members of the George Mason community through programming and outreach.

Take advantage of the following resources and stay connected to George Mason throughout the year!

Get Involved

PARENT AND FAMILY COUNCIL

The Parent and Family Council provides an opportunity for parents and families to meet with university leadership, volunteer at events, and become actively engaged and informed members of the George Mason community.

PARENT AND FAMILY FUND

The Parent and Family Fund offers parents and families the opportunity to play a role in building and shaping an exemplary educational experience for George Mason students. You can be part of every student's success by giving a gift of any size at any point throughout your student's time at George Mason.

FAMILY FAREWELL

All families are invited to attend Family Farewell on the same day(s) as First-Year Student Move-In prior to the start of the fall semester. Light refreshments will be provided after an exciting and emotional day of moving your student into their residence hall.

FAMILY SUPPORT SERIES

The Family Support Series is intended to help parents, families, and supporters understand how they can best support their student while at George Mason. Webinars are typically held in the evenings, last approximately one hour, and are recorded and made available following each session.





FAMILY WEEKEND

October 16–18, 2026

We encourage all families to join us for our annual university-wide celebration that takes place each fall. Events are designed to allow families to meet one another, become familiar with university resources, spend time with their student, and learn more about life as a George Mason Patriot!

Stay Informed

WEBSITE

If you have a question about George Mason and aren't sure where to start, visit masonfamily.gmu.edu and take advantage of the multitude of resources available for our George Mason families.

MASON FAMILY CONNECTION

Everything needed to make the most of your experience is within the Mason Family Connection at gmucampusesp.com. Find your community within our larger family network, customize the content and frequency you receive updates, and more.

WHERE TO STAY

Our website compiles local hotel options in the area for families and guests traveling to campus and seeking accommodations. Visit masonfamily.gmu.edu/resources/where-to-stay for more information and details on how to make a reservation directly.

WHAT GEORGE MASON FAMILIES ARE SAYING

Every semester, we survey families and ask about connection to George Mason, feelings of value as members of our community, and preferred methods and levels of communication and engagement.

- 80% feel connected to the university
- 81% feel the university values families as an important part of the community
- 80% feel communication and resources from the university are sufficient

Connect with Us!

✉ families@gmu.edu

☎ 703-993-2475

🏠 masonfamily.gmu.edu

🗣️ Mason Family Connection (gmucampusesp.com)

📷 @masonnsfp

📘 /masonnsfp



Meet the Parent and Family Council

The Parent and Family Council is a group of diverse, dedicated parent and family volunteers who serve as ambassadors for George Mason among the parents and family members of undergraduate students and provide feedback to the Office of New Student and Family Programs on issues of particular interest to parents and families. The council meets two times each year to discuss issues; learn more about university developments affecting students; plan programs and events to involve parents and families in the life of the university; participate in broadening and deepening relationships in support of the university; and allocate finances through the Parent and Family Fund.

Expectations

- Attend the Spring and Fall meetings of the Parent and Family Council
- Participate in a minimum of two volunteer opportunities throughout the year
- Serve on one Council committee
- Provide input and ideas at meetings and on a regular basis, and contribute knowledge of your student's experience to help inform practices
- Represent the interests of all George Mason families and serve as an ambassador, working to engage other parents and families in supporting university efforts

Benefits of joining the Parent and Family Council

- Meet two times a year with university leadership to hear first-hand, timely news and information about George Mason
- Attend Family Weekend annually free of charge
- Receive Council-branded apparel and name badge to wear while volunteering
- Featured on the Family Programs website at MasonFamily.gmu.edu/Parent-and-Family-Council

For more information on the Council, please visit our Council Membership page at: bit.ly/GMUPAFCMembership

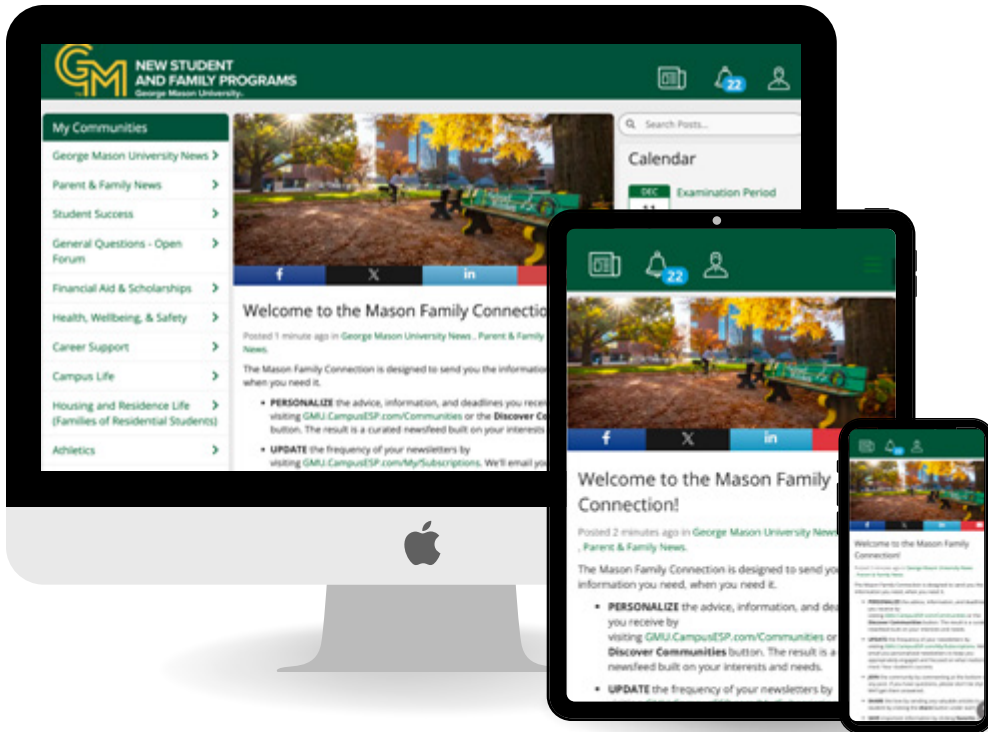


University Life
NEW STUDENT AND FAMILY PROGRAMS
 George Mason University®



A way to stay involved with your student and George Mason.

Access for George Mason families sponsored by New Student and Family Programs.



Your one-stop shop for:



Access to important campus news and deadlines



Personalized newsletters on your schedule



Announcements via email



Sharing of content with friends and family



Supplemental Nutrition Assistance Program (SNAP)

SNAP benefits help you buy nutritious food, seeds or plants for your household.



It's easy to apply! WWW.

Online: commonhelp.virginia.gov



Call: 833-522-5582

Visit: **your Local Department of Social Services**

- » SNAP can be used in grocery stores and online
- » Can also purchase fresh, nutritious food at farmers markets that accept EBT



SNAP benefits are issued electronically to eligible households on a card

similar to a debit card to use at authorized retailers to buy food.



This institution is an equal opportunity provider.

Am I eligible?

View the most current household income limits chart on our website.



Additional information about SNAP

is available at: www.dss.virginia.gov/snap



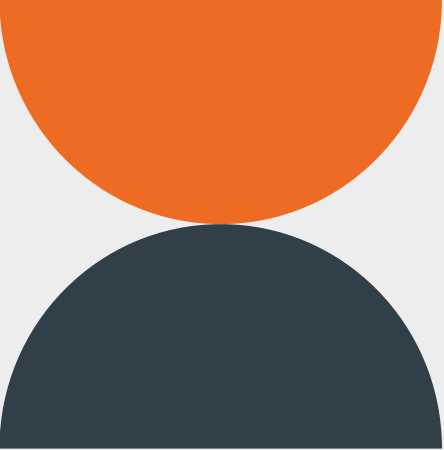
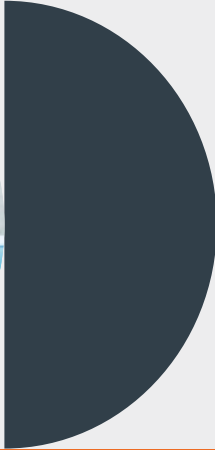
You may **not** use SNAP benefits to buy:

alcoholic beverages, tobacco, soap, paper products or other nonfood items or already prepared hot food at the store.



VIRGINIA DEPARTMENT OF SOCIAL SERVICES





Boring helps your financial goals stay the course.

Simplify the money side of college life with PNC Student Banking.

pnc.com/studentbanking

Find your nearest PNC branch at locator.pnc.com.



Online and mobile banking¹



Financial education



Fee-free PNC and Partner ATM access nationwide²



International student support

¹ A supported mobile device is needed to use Mobile Banking. Standard message and data rates may apply.

² Must be PNC card holder. Partner ATMs are not owned by PNC and may be limited to cash withdrawal functionality.

Brilliantly Boring since 1865 is a service mark of The PNC Financial Services Group, Inc. ©2025 The PNC Financial Services Group, Inc. All rights reserved. PNC Bank, National Association. Member FDIC.

UNV PDF 1024-062-2552205



BRILLIANTLY
BORING
SINCE 1865SM

University Studies

New to George Mason University?

Take UNIV 100 - Intro to George Mason

Learn:

- How college works, and build skills!
- Tips and resources for academic, career and personal success
- All about what George Mason has to offer!

Connect with:

- Peers and faculty
- Campus offices and opportunities
- Job and internship venues

Transfer Student?

UNIV 300 - Transfer Transition

Designed for transfer student success!

**Make the most out of college.
Start George Mason right!**

The Right Start!

UNIV 100 and 300:

Discussion-based, student-oriented, fun, 1-credit elective developed for students new to Mason.

No exams!

**REGISTER DURING
ORIENTATION ON
PATRIOT WEB!**

Speak with your academic advisor about which course is right for you.



univ@gmu.edu



703-993-3794



www.univstudies.gmu.edu



Be Brave. Be Bold...Wear Your Green & Gold!

Every Friday is Spirit Friday! Wear Your Colors!

Do you know where your colors are?



Follow Us on Instagram



Subscribe to Email List



Keep a look out for new
product releases and
giveaways!



CLUB

THERE'S A COURT FOR



Life at George Mason

PICKLEBALL



UNIVERSITY LIFE

University Life (UL) cares for the whole student by promoting inclusive well-being and fostering lifelong learning to prepare ethical leaders for the world.

Our four strategic goals and accompanying strategies serve as guideposts for all UL professional staff and the more than 1,000 undergraduate and graduate student assistants over the next four years in delivering an exceptional student experience where *every student succeeds*.

The University Life Mission

To engage students in educationally purposeful experiences resulting in student learning and development, academic success, and degree completion. We do so by:

1. Fostering self-discovery and teaching students to navigate transitions throughout their George Mason experience.
2. Engaging our diverse, global, and multicultural community to enrich the educational environment, promote mutual respect and civility, and develop global citizens.

3. Empowering students to be socially conscious leaders and promoting democratic and civic engagement.
4. Educating students about individual and community responsibility and holding them accountable for ethical practices, academic integrity, and high standards of personal conduct.
5. Promoting wellness, healthy lifestyle choices, and a culture of safety.
6. Creating opportunities and communities for student involvement and engagement with peers, faculty, staff, and administrators.
7. Embodying lifelong learning.

 ulife.gmu.edu

INVOLVEMENT AND ENGAGEMENT

George Mason's Regional Locations

MASON SQUARE

Mason Square, in the Virginia Square neighborhood of Arlington County near Washington, D.C., offers graduate programs in law, peace and conflict resolution, policy, business, arts management, executive and professional education, and more. Mason Square is also home to Fuse, which hosts the Institute for Digital Innovation, and acts as a pivotal hub of robotics, cybersecurity, and artificial intelligence research. Mason Enterprise Center—Arlington, which provides a range of services for Virginia start-ups and innovators, is also located at Mason Square. Campus resources include a full range of University Life services, a podcast studio, library, study lounges, and a computer lab. Mason Square is accessible via campus shuttle and is within walking distance of the Virginia Square—GMU Metro Station on the Orange Line.

🏠 masonsquare.gmu.edu

SCIENCE AND TECHNOLOGY CAMPUS

George Mason's Science and Technology Campus in Manassas is in Innovation Park, the largest research business park in Northern Virginia, home to technology companies and government agencies conducting cutting-edge research. The campus hosts select courses in applied information technology, advanced biomedical science, forensic science, criminology, education, kinesiology, mechanical engineering, and more. It is also home to the 300-seat Verizon Auditorium, the Freedom Aquatic and Fitness Center, the George Mason Center for Team and

Organizational Learning (The EDGE), the Hylton Performing Arts Center, the Institute for Biohealth Innovation, the Biomedical Research Laboratory, the Life Sciences and Engineering Building, and Beacon Hall (graduate student housing). This campus is also accessible via campus shuttle.

🏠 scitechcampus.gmu.edu

MASON KOREA

Located 25 miles from Seoul in Songdo, South Korea, Mason Korea currently offers undergraduate programs in business, computational and data sciences, computer game design, conflict analysis and resolution, economics, and global affairs; graduate programs in computational science (master of science) and law (master of laws); and supports all Mason Core requirements. The campus includes state-of-the-art teaching facilities, performing arts centers, and student housing. To learn more about how you can study abroad at Mason Korea, visit the website.

🏠 masonkorea.gmu.edu/us

SMITHSONIAN-MASON SCHOOL OF CONSERVATION

The Smithsonian-Mason School of Conservation offers residential, hands-on, interdisciplinary programs in conservation biology for undergraduate and graduate students on the grounds of the Smithsonian Conservation Biology Institute in Front Royal, Virginia. Learn how you can spend a semester at the Smithsonian-Mason School of Conservation by visiting the website.

🏠 smconservation.gmu.edu



Student Involvement

We help students get connected to the Mason Nation through campuswide events, student organizations, trainings, student advocacy, and personal interactions to bring ideas to fruition, create a sense of belonging, and prepare students for success in their future.

REGISTERED STUDENT ORGANIZATIONS

With more than 500 Registered Student Organizations (RSOs), George Mason opens up endless ways to get involved. From holding cultural events and lectures to expos and conferences, these student-led groups bring campus to life. Whether you want to connect, lead, or explore new interests, there's a place for you! Check out [mason360.gmu.edu](#) for a complete list.

STUDENT GOVERNMENT

Student Government (SG) is the voice of undergraduate George Mason students, advocating for student needs and enhancing campus life. There are plenty of ways to get involved in SG and make an impact during your time at George Mason University!

FRATERNITY AND SORORITY LIFE

Fraternity and Sorority Life (FSL) at George Mason is a vibrant community of more than 1,000 members across 40+ national and international organizations. Beyond creating chances for lifelong bonds, our chapters elevate campus life through service, leadership, and social events. With a commitment to excellence, FSL fosters academic success, networking, and unforgettable experiences.

PATRIOT ACTIVITIES COUNCIL

The Patriot Activities Council (PAC) brings the fun to George Mason with exciting, low- or no-cost events like concerts, carnivals, and trips to local attractions. Whether you're looking to meet new friends, make unforgettable memories, or help plan the next big event, PAC is your go-to for entertainment and campus connections!

STUDENT INVOLVEMENT MARKETING TEAM

The Student Involvement Marketing Team promotes student involvement events, traditions, and initiatives through creative and engaging marketing strategies. Our team develops career-ready skills in public speaking, innovation, and marketing while encouraging student participation and campus involvement.

GEORGE MASON UNIVERSITY ESPORTS

George Mason University Esports (GMU Esports), a Student Involvement organization, is the ultimate hub for gaming and competition on campus. We cultivate a vibrant community where students connect, compete, and level up their skills. From collegiate esports teams to casual gaming events and tournaments, we create unforgettable experiences for all gamers. To find out more, join our discord: [discord.gg/gmuesports](#).

📍 The Hub, Suite 2300 📞 703-993-2909

🏠 [si.gmu.edu](#)

📧 @MasonPatriots 📘 MasonInvolvement





Center for Leadership and Intercultural Engagement

The Center for Leadership and Intercultural Engagement is dedicated to fostering holistic growth, intercultural awareness, and leadership development. We provide students of all backgrounds with opportunities to engage in meaningful dialogue, explore their identities, and navigate various cultural and social environments.

Through workshops, programs, courses, mentoring, advising, and service, we empower students to become effective, ethical leaders who understand themselves, interact empathetically with others, and create a legacy of positive change. Whether through leadership training, heritage programs, or community-building initiatives, we support students in developing a strong sense of self, cultivating global competencies, and preparing for success in an interconnected world. We provide a variety of opportunities throughout the year; one example is our dialogue across difference programs.

BUILDING BRIDGES THROUGH DIALOGUE

We foster spaces for open, meaningful conversations that connect people across different perspectives. Through dialogue, active listening, and shared understanding, we empower individuals to engage in challenging discussions, find common ground, and lead with empathy. We are committed to fostering a community where diverse voices come together to create positive change! Some of our dialogue across difference programs include:

- A Braver Campus Series
- Community-Driven Heritage Programs
- Bridging Differences, Increasing Understanding
- Creating Community
- Engaged Citizens

- The Intercultural Development Inventory (IDI)
- Right, Wrong, or Different Discussions
- Voices at the Center
- Voices in Motion
- Interfaith Dialogue series
- Interfaith Dinner

Also check out our new Spiritual and Interfaith Center on the Fairfax Campus. The center offers a tranquil environment for reflection, meditation, prayer, and connection. Open to all students, faculty, and staff regardless of spiritual or cultural background, this center is meant to serve as an on-campus sanctuary for personal growth and interfaith dialogue. The Spiritual and Interfaith Center is open Monday through Friday from 9 a.m. to 9 p.m.

GET INVOLVED WITH CLIE!

Looking to grow as a leader and make a difference? Your ideas, creativity, and expertise can help shape impactful programs and workshops that foster leadership, humanity, and global connections. Gain hands-on experience, develop key skills, and contribute to a more engaging campus. No matter your passion—social change, community building, or personal growth—there's a place for you here. Be part of something bigger and help create a lasting impact!

STAY CONNECTED!

For a complete listing of the programs and services we provide, be sure to follow us on Instagram (@mason_clie) or check out our website at clie.gmu.edu.

- ♥ The Hub, Suite 2400 ♥ SUB I, Suite 2400
- ♥ Spiritual and Interfaith Center (Fenwick A)
- 🏠 clie.gmu.edu @mason_clie



Student Media

Student Media's mission is empowering students to exercise their First Amendment rights and creativity through creating works that inform, enrich, and entertain the George Mason community. Writer, editor, photographer, videographer, anchor, DJ, designer, peer reviewer, director, and producer are just a few of the roles students can explore when they get involved.

With more than 10 unique publications and media groups that include George Mason's official student newspaper (Fourth Estate), radio station (WGMU), and television network (Mason Cable Network), we offer a wide variety of opportunities to apply academic concepts beyond the classroom and build practical skills that can open up new career pathways. We meet students where they are and offer hands-on training to help them find success and enhance their resume.

We are always looking for talented students to join our dynamic team! Become an audience member, attend an event, join a media group's staff, or submit your original works for publication consideration.

HOW DO I GET INVOLVED?

Visit our office in the lower level of The Hub, Room 1201, or fill out our interest form online at c2ms.info/osmapply.

WHY STUDENT MEDIA?

- Be creative.
- Meet great people.
- Build skills to add to your resume.
- Get your original work published.
- Gain practical hands-on experience.
- Work in a professional and fun environment.

PICK UP A PUBLICATION

Get your copy of our latest print publications at one of our literature racks around campus or visit our office in The Hub, Room 1201.

Student Media

☎ 703-993-9745 ✉ stumedia@gmu.edu

🏠 studentmedia.gmu.edu

📺 📷 📱 📺 @gmustudentmedia

Mason Recreation

Mason Recreation promotes well-being through dynamic, inclusive experiences. We provide space for the George Mason community to move, play, connect, and thrive in a culture of active living and lifelong growth.

We offer four state-of-the-art recreation facilities for the university and surrounding community: the Activities Building, Aquatic and Fitness Center, the Recreation and Athletic Complex, and Skyline Fitness Center. Membership is free for all full-time students. Part-time students may activate their membership at any of our facilities for a small fee.

AQUATICS

If you enjoy the water, the Aquatic and Fitness Center is the place for you. Relax in our recreation pool or swim a few laps in our Olympic-size competition pool. Fun activities to watch for are our Dive In Movies, Aqua Aerobics, and Splash Night held during Welcome2Mason each fall. Those looking for instructional/certification courses will find lifeguard certification, swim lessons, and CPR/AED/First Aid offerings.

FITNESS

Each of our facilities is fully equipped to support all of your fitness needs, including cardio equipment, free weights, squat racks, benches, and much more! Are group workouts more your style? We have more than 30 group fitness classes each week, including Zumba, yoga, Pilates, cycling, capoeira, tai chi, boot camp, HIIT, and more. All classes are perfect for people of all fitness levels. Do you have fitness goals? Let our certified personal trainers help you get to where you want to be. Remember, our friendly staff is always here to guide you on your fitness journey!

INTRAMURAL SPORTS

Intramural Sports offers you the opportunity to compete in recreational and competitive sports leagues and special events on campus. We have the usual favorites like flag football, basketball, volleyball, and soccer, but don't forget about table tennis, cricket, and kickball!

CLUB SPORTS

Club Sports offers something more competitive and a chance to compete and represent George Mason on a local, regional, and national level. With 30+ clubs, there is something for everyone. Club teams are student-led organizations and provide a great opportunity for individuals who are looking for leadership and development opportunities. If we do not offer the club you are looking for, simply contact our office to begin the application process and start your own.

OUTDOOR ADVENTURES

Enjoy the great outdoors by participating in trips conducted most weekends throughout the fall and spring semesters. Outdoor Adventures also offers a variety of equipment to rent if you wish to embark on your own trip. The Outdoor Adventures office is located in the Skyline Fitness Center, adjacent to the Southside dining hall.

THE EDGE

The EDGE provides hands-on experiential learning programs that offer cutting-edge team development activities and workshops. This program features a challenge course, Alpine climbing tower, and a mobile program. If your club, class, or group is looking to develop and grow as leaders, book a program with the EDGE today!

WELL-BEING

There is no time like the present to empower your well-being! We provide a variety of engaging well-being programs for Patriots, including our Now What? learning series and Fun Fridays. Our educational well-being resources include Voices of Well-Being and our Monthly Awareness Topics.

📞 703-993-5323 🏠 recreation.gmu.edu
 📱 📧 📷 @GeorgeMasonRec



Housing and Residence Life

Welcome, Patriots! This is an exciting time in your journey, and we are thrilled to be a part of it! Housing and Residence Life is home to more than 6,000 students. With so many students calling George Mason home, you'll have abundant opportunities to connect with your peers and our diverse university community. Students who live on campus have convenient access to numerous dining options, Fenwick Library, multiple recreation facilities, a wealth of study spaces, and so much more! Our Housing and Residence Life staff are committed to ensuring you have a successful transition to George Mason. From community events to one-on-one conversations, we are here to provide support and activities along the way. With opportunities and resources like these, we are confident George Mason will feel like home in no time.

Every first-year first-time residential student is required to reside on campus and will have the opportunity to live in a Residential Learning Community (RLC). These communities consist of three different categories—academic, identity, and interest based—and are located in specific buildings and floors. Residential Learning Communities allow you to live and learn alongside other students who share a common passion, major, or identity in an environment tailored to that topic. Students living in our RLCs will have opportunities to engage with academic faculty and staff outside of the classroom in a variety of activities. Our RLCs help make a big campus feel smaller and can connect you to your peers as well as faculty and staff members who are invested in your success. On your housing application you can apply for your top RLC choice and you will be accepted based on your application, answers, and space availability.

Our residence halls open on Wednesday, August 19, 2026, for all incoming first-year students. All students will be assigned a specific move-in time. Move-in details will be posted on the Housing and Residence Life website beginning July 1. In addition to the housing website, be sure to check your George Mason email and the Housing Portal throughout the summer for further instructions.

Students living on campus have the opportunity to join the Residence Hall Association (RHA) as a way to advocate for and create the experience they want in the residence halls. Students can serve as officers and as neighborhood representatives. Students can talk to their resident assistant for more information.

To help prepare you for the year ahead, be sure to mark these important dates on your calendar!

- First-Year Move-In: August 19–20
- Upper Level Move-In: August 21–23
- Winter Break Closing: December 16 at 5 p.m. (Residents will need to apply for Winter Break Housing to retain access to their space.)
- Residence Halls Open for Spring 2027: January 15
- Residence Halls Close: May 12, 2027, at 5 p.m.

We hope you are as excited to be at George Mason as we are to have you join our community! Be a part of the conversation on our social media channels or visit our website for more information.

☎ 703-993-2720

🏠 housing.gmu.edu ✉ housing@gmu.edu

📱 [@MasonHousing](#)





FREEDOM OF EXPRESSION AT GEORGE MASON UNIVERSITY

At George Mason University we include and embrace a multitude of people and ideas in everything we do and protect the freedom of all members of our community to seek truth and express their views. Freedom of expression in an intellectually and culturally diverse environment provides all members of our community the opportunity to learn, grow, and contribute to our shared mission to create a more just, free, and prosperous world. George Mason University is committed to protecting free speech and free expression on its campus and in its education programs.

Being exposed to competing perspectives is essential for questioning our assumptions, testing our beliefs, and refining our knowledge. Our goal as a community must be to create an environment where we can engage in difficult and challenging conversations with civility and mutual respect, where confronting opposing ideas and perspectives becomes an opportunity to learn from and with each other.

Our commitment to freedom of expression is not incompatible with our commitment to diversity and to nurturing a positive and collaborative environment where everyone can thrive. On the contrary, it is by achieving the latter that freedom of expression becomes a powerful tool for personal learning and growth. But our efforts to build a civil and respectful environment cannot be used as reasons to limit the rights of others to express views that we may consider misguided or even offensive. As articulated by a 2014 report from the University of Chicago, we must hold a fundamental commitment to “the principle that debate or deliberation may not be suppressed because the ideas put forth are thought by some or even by most members of the university community to be offensive, unwise, immoral, or wrongheaded.”

George Mason facilities are intended primarily for the use of its students, faculty, and employees in their efforts to advance the educational mission of the university. No use shall be permitted that is unlawful, threatens the safety of the George Mason community, or is inconsistent with the mission of the university. In maintaining a safe campus, in

which its students, faculty, and employees can advance the educational mission of George Mason without disruption, the university may establish constitutionally permissible time, place, and manner restrictions on the use of its facilities and property (e.g., registration requirements, times when use is permitted, limitations on amplified sound). These can be found in University Policies 1103, 1109, 1140, and other applicable policies and procedures. These policies and procedures ensure that George Mason can focus on its educational mission, provide a safe environment for learning, and preserve the aesthetics of its campus.

The campus community is encouraged to participate in all university-sponsored programs and activities. Members of the George Mason community maintain the right to criticize and contest speech they disagree with, whether by members of the George Mason community or outside speakers who are invited to the campus. But freedom of expression does not permit disrupting or preventing another person's ability to speak or hindering the ability of others to see or hear that speech. The First Amendment protects the right to peacefully protest, demonstrate, and speak in opposition to others' speech, as long as it does not impede the constitutionally protected speech of others.

All members of the George Mason University community enjoy the right to freedom of speech and expression. Individuals are encouraged to speak, write, listen, challenge, and demonstrate as a natural platform for intellectual engagement. This is the true spirit of freedom and learning.

If you would like additional information about George Mason policies related to speech and expression, you can visit [gmu.edu/1stAmendment](https://www.gmu.edu/1stAmendment). If you believe your freedom of speech or expression has been disrupted, you may report an incident of disruption of constitutionally protected speech by selecting the “Submit a Report” button on that web page. You can also visit [campusclimate.gmu.edu](https://www.gmu.edu/campusclimate) for more information about speech, expression, and other campus climate topics at George Mason.

BELONGING AT GEORGE MASON

Contemporary Student Services

At George Mason, Contemporary Students include adult learners, transfer students, student-parents and caregivers, off-campus students, military- and veteran-connected students, foster care alumni, and other post-traditional students. Contemporary Student Services (CSS) advocates, celebrates, educates, and serves. We offer resources, peer support, and social opportunities to specifically meet the needs of contemporary college students and those transitioning to off-campus living.

🏠 contemporary.gmu.edu

CONTEMPORARY STUDENT LOUNGE

Stop by our Contemporary Student Lounge in room 1012 of The Hub. You will always find welcoming folks, free coffee and tea, opportunities to make new friends or simply relax and study, and our kid-friendly Kids Zone. Our Contemporary Student Peer Mentors also work out of the lounge.

Monday–Thursday, 10 a.m.–7 p.m.

Friday, 10 a.m.–2 p.m.

OPPORTUNITIES FOR CONTEMPORARY STUDENTS

- Campus and community resources for parenting, pregnant, transfer, and all contemporary students
- Contemporary Student Advisory Board: Open to all contemporary students to share your experiences, provide leadership within the community, and amplify the voices of students
- University Studies (UNIV) course sections specifically for contemporary students: UNIV 100 is for off-campus students, UNIV 300 is for transfer students to support their transition to George Mason, and BIS 301 is a course to support adult learners as they transition to George Mason
- Peer mentors and professional staff to support self-advocacy and help with any questions about George Mason life on and off campus
- Social opportunities geared toward specific student population identity groups

Signature events and programs include:

- Preamble Events: An opportunity to get to know campus and connect with fellow contemporary students
- Trunk or Treat: A service opportunity for all students and a fun day of fall festivities for student-parents, caregivers, and area families. Sign up to decorate a trunk or bring your junior Patriots!
- Monthly Community Meet-Ups: Monthly meet-ups for transfer students, adult learners, and student-parents and caregivers

- Contemporary Student Appreciation Week: A week of educational and fun programming
- Contemporary Student Graduation Celebration: A celebration acknowledging the accomplishments of our contemporary student graduates

OFF-CAMPUS HOUSING

CSS supports students looking for off-campus housing by hosting an online housing locator at och.gmu.edu that includes a roommate finder restricted to the George Mason community. The site also includes resources like our Off-Campus Housing Handbook.

📍 The Hub, Room 1012, Contemporary Student Lounge

🏠 contemporary.gmu.edu @mason_css

✉️ masoncss@gmu.edu

Office of International Programs and Services (OIPS)

Our mission is to educate, celebrate, and serve.

We connect members of the George Mason community to foster friendships, celebrate each other's cultures, explore global issues and themes, and promote learning beyond the classroom. Additionally, we provide immigration advising, endorse immigration documents, and recommend and approve immigration benefits for international students, faculty, and exchange visitors. For immigration questions and concerns, you can meet with OIPS advisors during walk-in hours or schedule an appointment.

OIPS-sponsored events and programs are primarily organized by students for students and offer excellent opportunities to enhance your understanding of the world through personal interaction. Signature events and programs include:

- **International Buddy Program:** Aims to build cross-cultural friendships between George Mason's international and domestic students by fostering mutual appreciation for cultures different from their own through a variety of campus events and activities
- **International Café:** An opportunity offered multiple times a semester for students to showcase various countries and cultures
- **International Education Week (November):** A weeklong multicultural exchange with specific educational objectives
- **International Week (March/April):** A weeklong celebration of George Mason's diverse and international cultures

📍 SUB I, Suite 4300 ✉️ oips@gmu.edu

🏠 oips.gmu.edu

📘 Mason International ✉️ @OIPSMason 📷 @MasonOIPS

LGBTQ+ RESOURCES CENTER

The LGBTQ+ Resources Center cultivates the success, retention, and well-being of George Mason students. Our work is deeply collaborative and rooted in intersectional approaches. We build identity-affirming programs, develop leaders, provide critical resources, and foster a culture of meaningful community and allyship at George Mason.

- Center Internship Program
- LGBTQ+ Residential Learning Community
- Safe Zone+ Program

📍 SUB I, Room 2200

☎ 703-993-2702 🏠 lgbtq.gmu.edu

📘 Mason LGBTQ+ Resources

📷 @gmu.lgbtq

FIRST-GEN+ CENTER

The First-Gen+ Center supports all students who are historically underrepresented in higher education and their allies. It specifically centers college students who identify as first generation, who identify as undocumented, who have refugee status, and whose families have limited income.

Are you first-gen? Our department defines first-generation students as a college student whose parent(s) and/or legal guardians did not receive or complete a bachelor's degree within the United States. Even if you have an older sibling or cousins who attended college, you are still first-gen. We offer a variety of programs throughout the year:

- First-Gen Week (National First-Gen Day is November 8)
- First-Gen Pinning Ceremony for graduating students
- I AM FIRST Podcast
- First-Gen+ Resource Guide
- First-Gen Faculty and Staff List
- One-on-one meetings with full-time staff
- Student Transition Empowerment Program (STEP)
- UndocuAlly Training
- Every Campus a Refuge Training

📍 SUB I, Suite 2400 🏠 firstgen.gmu.edu

✉ firstgen@gmu.edu 📘 📷 @masonfgpc

WOMEN AND GENDER STUDIES

The Women and Gender Studies Center raises awareness of issues related to women, gender, race, and sexuality, and fosters an intersectional approach to the student experience at George Mason. The center is a cocurricular program providing learning opportunities through programming, events, activism, and courses through a feminist lens.

The center is located in Room 240K of the Johnson Center and is open to all students to come study, rest, hang out, have lunch, or just to nap for a few minutes between classes.

Women and Gender Studies maintains a dual program of academics and University Life through signature events such as World AIDS Day, Sojourner Truth Lecture, and Women's History Month in collaboration with various campus departments.

📍 Johnson Center, Room 240K 🏠 wmst.gmu.edu

📘 MasonWGST ✉ @MasonWGST 📷 @mason_wgst

SUPPORT SERVICES

Counseling and Psychological Services

George Mason University's Counseling and Psychological Services (CAPS) provides free and confidential services to George Mason students. The range of services offered includes:

- Individual and group counseling
- Psychiatric services
- Outreach events
- Skills-based workshops
- Psychological referral services
- Peer educators
- Consultation with faculty, staff, parents, and friends

All students enrolled in classes at George Mason are eligible for services. During the the initial check-in appointment, the counselor will speak with you briefly to obtain information on your current mental health needs and determine next steps for your care. Students are referred to services based on their concerns to help promote psychological health and academic success.

Students may use CAPS to address a variety of concerns, including managing anxiety, depression, grief, and/or anger; personal, family, and relationship concerns; traumatic experiences; difficulty with alcohol, other substances, or food; sexual identity; race/ethnicity, culture, and diversity; and attaining educational and academic goals.

Services are provided by a staff of professional clinical psychologists, counselors, social workers, doctoral-level trainees, and psychiatric providers. For students who need more intensive services, we offer referrals to community-based providers and facilitate successful connections with these resources.

In addition to working directly with students, CAPS provides consultation to faculty, staff, parents, and friends who may be concerned about another student. By speaking with an on-call clinician, individuals can gain information and support about how they might approach and address issues with the student of concern. Refer to the Student Support and Advocacy Center section in this guide (page 38) for information on how to make a referral for students of concern.

📍 SUB I, Suite 3129 📞 703-993-2380
🏠 caps.gmu.edu

Student Health Services

Student Health Services is staffed by dedicated doctors, nurse practitioners, and nurses who provide easily accessible and affordable health care to all enrolled students in a caring and confidential environment. We offer a wide variety of services to keep our George Mason community healthy.

SERVICES

- Treatment of illness and injury
- Health and wellness counseling
- Immunizations and flu vaccine
- Laboratory tests
- Sexually transmitted infection (STI) testing and treatment
- Help quitting smoking or tobacco
- Travel clinic
- Allergy clinic
- Screening and treatment for mental health concerns
- Nutrition counseling
- Physical health exams
- Basic gynecological care, pap tests
- Pregnancy testing and counseling
- Contraceptive education and prescriptions, emergency contraception
- Video telehealth and in-person visits

There is no charge to be seen by one of our health care providers. There are fees for lab tests, medications, immunizations, supplies, and some procedures.

Students do not need health insurance to be seen at Student Health Services.

To make an appointment, call or schedule online. There are often same-day appointments available for students with acute care needs.

🏠 shs.gmu.edu 📞 703-993-2831
📍 Fairfax: SUB I, Room 2300
📍 Mason Square: Van Metre Hall, Room B102
📍 Science and Technology: Colgan Hall, Room 229
📞 After Hours Nurse Advice Line: 703-993-2831



TIMELYCARE

Patriots have free 24/7 access to TimelyCare, a high-quality, virtual mental health platform. You can access TimelyCare services 365 days a year—that means access during breaks, after hours, and any time you need support!

Free for Students, Available 24/7, 365 Days a Year

To learn more, visit: ulife.gmu.edu/timely-care.



STUDENT HEALTH INSURANCE PLAN

George Mason University offers a student health insurance plan and a dental plan, which are available to eligible undergraduate and graduate students who would like to purchase health insurance. Students with a plan can purchase coverage for eligible dependents.

shs.gmu.edu/insurance

TIPS FOR INCOMING STUDENTS

- Turn in your immunization records early to ensure you have met the requirements.
- If you have health insurance, check with your insurance provider about coverage in the Northern Virginia area. Keep your insurance card or a copy with you.
- Do you have a chronic medical condition? Talk with your doctor about how to care for yourself at George Mason. Consider scheduling a new patient appointment with Student Health.
- Know your personal and family medical history and if you have any allergies. These are common questions if you seek health care.
- Bring your medications and prescriptions with you. Have a plan for any refills and understand what your medication is for.
- Pack a first-aid kit. A few items can ensure you are prepared for basic self-care.
- Under 18? Have your parent/guardian sign the minor consent on the Certificate of Immunization.

IMMUNIZATION REQUIREMENTS

All newly admitted students and re-admitted students must complete the George Mason Certificate of Immunization and submit the form and any supporting documents to the Immunization Office before the deadline. Upload the form to the Patient Portal.

Immunization Record Deadlines

Deadlines vary for fall and spring semesters. Check the website for dates.

Students must complete the student sections and a health care provider must complete the remaining sections of the Certificate of Immunization. If a student is not able to provide appropriate documentation, immunizations and/or titers are available for a fee.

Students can check their immunization status in the Patient Portal.

A late fee will be charged and a hold will be placed on the student's Patriot Web account if immunization records or documentation are incomplete. This may delay future class registration.

shs.gmu.edu/immunizations

Learning Services

Learning Services assists George Mason students in achieving their academic goals. Many students find that learning and studying at George Mason is different than what they were accustomed to in high school or in community college. The staff provides a variety of free services to empower students to help them study effectively, manage assignments, and prepare for tests.

ACADEMIC COACHING

Peer Academic Coaches are available to meet with students to discuss their academic goals, develop study plans, and learn new study strategies. Coaches are trained and supervised by a Learning Specialist. Make an appointment online at learningservices.gmu.edu.

ACADEMIC SUCCESS WORKSHOPS

Workshops on a wide variety of academic strategies are offered each week throughout the academic year. Space is limited, so students are encouraged to register in advance. Topics include time management, procrastination, reading strategies, exam strategies, and improving concentration, to name a few.

ONLINE MEDIA LIBRARY

Videos on adjusting to college, motivation, goal setting, and critical thinking are available online.

KNACK TUTORING

George Mason University is partnering with Knack, a peer-to-peer tutoring platform, to provide access to high-level tutoring services for select courses each semester. These tutors are current George Mason students who have previously succeeded in the same courses, and the tutoring is free for our students. Visit gmjknack.com to learn more.

TUTORING RESOURCES

A list of campus-based tutoring resources is available at learningservices.gmu.edu/tutoring-resources2.

📍 SUB I, Suite 3600 📞 703-993-2999

🏠 learningservices.gmu.edu

Disability Services

Disability Services will help to transform George Mason University into an inclusive and accessible university where programs, services, and environments are accessible by all people. We will do this by

- Promoting equitable access for students with disabilities in all activities within the university experience
- Fostering partnerships with students, faculty, and staff to create an accessible, diverse, and inclusive community
- Increasing inclusivity within the university community for individuals who identify with the disability community

Disability Services provides long- and short-term academic, nonacademic, housing, and meal plan accommodations for George Mason students. To register with Disability Services, students must complete the following steps:

- Complete and submit the intake form.
- Submit any appropriate impairment, condition, or disability documentation. In the event that a student does not have documentation, they may contact Disability Services to discuss the next steps.
- Participate in an interactive initial meeting to discuss accommodations.

Contact Disability Services directly with questions or concerns.

📍 SUB I, Suite 2500

📞 703-993-2474 📧 ods@gmu.edu 🏠 ds.gmu.edu

Student Support and Advocacy Center

The Student Support and Advocacy Center (SSAC) is committed to providing an empowering environment for all George Mason students to seek support services and to explore healthy life choices. In addition to assisting students encountering barriers to personal success, we offer educational programming, one-on-one consultations, and resources in the areas of sexual and interpersonal violence, financial well-being, substance use, and basic needs services.

SSAC provides the following services:

- **Supporting Students in Distress:** Intervention with students encountering hardships that prevent them from achieving their academic and personal goals
- **Financial Well-Being:** Financial literacy education and guidance on navigating financial challenges
- **Basic Needs Services:** Support and initiatives to address food and housing insecurity
- **Patriot Pantry:** On-campus food pantry providing nonperishable food and hygiene items for students experiencing food insecurity
- **Survivor Support:** Confidential support, resource navigation, and advocacy services for students impacted by sexual and interpersonal violence
- **Respondent Services:** Confidential case management services for students responding to a Title IX allegation
- **Substance Use:** Support and prevention education programs addressing substance use concerns
- **Single Stop:** Connects students to an array of benefits and resources using an online screening tool

Students seeking to connect with a center staff member, and individuals referring students about whom they are concerned, should do so via SSAC's website at ssac.gmu.edu by clicking the "Request Support and Make Referrals" tab.

📍 SUB I, Suite 3200 📞 703-993-3686 🏠 ssac.gmu.edu



STUDENT RIGHTS AND RESPONSIBILITY

Code of Student Conduct

What is the Code of Student Conduct?

Do you know what is expected of a George Mason University Patriot? With independence comes responsibility.

The Office of Student Conduct hosts the Code of Student Conduct that outlines behavioral expectations for all students. Description of policies include:

- Living on campus
- Alcohol violations
- Drug policy violations
- Sexual misconduct and sexual harassment
- Interpersonal violence
- Possible sanctions and outcomes for violations

This is your chance to get involved! Read about the Community Adjudication Board, as well as the Residential Adjudication Board (Res Board), as an opportunity to get involved with helping and educating fellow George Mason students by resolving student conduct cases.

☎ 703-993-6209 🏠 studentconduct.gmu.edu

Academic Standards

As members of the George Mason University community, we are committed to fostering an environment of trust, respect, and scholarly excellence. Our academic standards are the foundation of this commitment, guiding our behavior and interactions within this academic community. The practices for implementing these standards adapt to modern practices, disciplinary contexts, and technological advancements. Our standards are embodied in our courses,

policies, and scholarship, and are upheld in the following principles:

Honesty: Providing accurate information in all academic endeavors, including communications, assignments, and examinations.

Acknowledgment: Giving proper credit for all contributions to one's work. This involves the use of accurate citations and references for any ideas, words, or materials created by others in the style appropriate to the discipline. It also includes acknowledging shared authorship in group projects, co-written pieces, and project reports.

Uniqueness of Work: Ensuring that all submitted work is the result of one's own effort and is original, including being free from self-plagiarism. This principle extends to written assignments, code, presentations, exams, and all other forms of academic work.

Violations of these standards—including but not limited to plagiarism, fabrication, and cheating—are taken seriously and will be addressed in accordance with university policies. The process for reporting, investigating, and adjudicating violations is outlined in the university's procedures. Consequences of violations may include academic sanctions, disciplinary actions, and other measures necessary to uphold the integrity of our academic community.

The principles outlined in these academic standards reflect our collective commitment to upholding the highest standards of honesty, acknowledgment, and uniqueness of work. By adhering to these principles, we ensure the continued excellence and integrity of George Mason University's academic community.

🏠 catalog.gmu.edu/policies/academic-standards

Nondiscrimination and Harassment

Office of Access, Compliance, and Community

George Mason University policy and federal and state law prohibit discrimination and/or harassment on the basis of any protected characteristic (race, religion, disability status, gender, etc.) protected by law. The Office of Access, Compliance, and Community ("OACC") is charged with receiving reports of discrimination/harassment, responding to them, and enforcing University Policies related to nondiscrimination and harassment (among other responsibilities). OACC houses the Title IX Coordinator who is responsible for monitoring the university's compliance with Title IX of the Education Amendments of 1972. Additionally, OACC is responsible for monitoring compliance with Titles VI and VII of the Civil Rights Act of 1964, the Americans with Disabilities Act, and all other federal and state nondiscrimination laws and regulations.

TITLE IX

Title IX of the Education Amendments of 1972 prohibits discrimination on the basis of sex in any education program or activity receiving federal financial aid. Sexual harassment, sexual assault, domestic violence, dating violence, stalking, and sexual exploitation are forms of sex discrimination, and are prohibited by law and university policy.

George Mason University is committed to providing a learning, living, and working environment free from discrimination. Any sex or gender-based discrimination, including those identified as Prohibited Conduct listed in University Policy 1202 (sexual assault, sexual or gender-based harassment, sex-based stalking, dating and domestic violence, and sexual exploitation, complicity, or retaliation) committed by George Mason students, staff, or faculty will not be tolerated. This applies to academic, educational, athletic, residential, and all other university operated and affiliated programs. George Mason encourages individuals who believe they have been subjected to Prohibited Conduct under University Policy 1202 to seek assistance and to report their concerns to the Title IX Office.

To make a Title IX Report, visit oacc.gmu.edu.

George Mason's Title IX Coordinator
Thomas M. Bluestein, PhD, JD
Office of Access, Compliance, and Community

📍 Aquia Building, Suite 373

☎ 703-993-8730

✉ Titleix@gmu.edu

🏠 oacc.gmu.edu

EQUAL OPPORTUNITY AND NONDISCRIMINATION

In accordance with federal, state, and local laws and regulations, George Mason maintains several nondiscrimination policies and employs professional staff and applicable procedures to ensure compliance in and access to all its educational programs and services. George Mason is a recipient of federal financial assistance with educational programs and activities that cover a wide range of student, faculty, and staff experiences. These experiences include matters related to the educational environment such as academics, athletics, housing, and all other university operated and affiliated programs.

In accordance with Titles VI and VII of the Civil Rights Act of 1964 and other laws, University Policy 1201 prohibits discrimination on the basis of race, color, religion, ethnic national origin (including shared ancestry and/or ethnic characteristics), sex, disability, military status (including veteran status), sexual orientation, gender identity, gender expression, age, marital status, pregnancy status, genetic information, or any other characteristic protected by law.

TITLE VI

Title VI of the Civil Rights Act of 1964 is a federal law that prohibits discrimination on the basis of race, color, and national origin and ensures equal access to educational programs and activities. OACC is charged with enforcing University Policy 1201, which complies with the requirements of Title VI. If you believe you have been discriminated against based on race, color, national origin, or any protected identity, please contact the Equal Opportunity team in OACC (George MasonEO). This team can also assist with the provision of supportive measures and connect students with George Mason partners and resources.

Further, under Title VI, discrimination on the basis of actual or perceived Jewish shared ancestry is prohibited by law (and University Policy). In accordance with applicable state and federal guidance and university Board of Visitors' resolution, upon receiving a report of alleged discrimination on the basis of actual or perceived Jewish shared ancestry, OACC will evaluate reports of antisemitism using the International Holocaust Remembrance Alliance ("IHRA") definition of antisemitism and IHRA Contemporary Examples of Antisemitism to determine whether alleged conduct constitutes antisemitic conduct, which illustrates discriminatory intent in analyzing whether conduct creates a hostile environment.

To make an Equal Opportunity or Nondiscrimination Report, visit oacc.gmu.edu

WHEN SHOULD I CONTACT OACC WITH MY CONCERNS ABOUT DISCRIMINATION OR HARASSMENT? ANY TIME.

Any student, faculty member, staff member, or applicant who has concerns about being subjected to unfavorable treatment based on a protected category cited in our nondiscrimination policies should contact OACC.

The Title IX Coordinator and team can help you understand your options if you think you may have encountered sex/gender discrimination or sexual misconduct (sexual assault, sexual or gender-based harassment, sex-based stalking, dating or domestic violence, sexual exploitation, complicity, or retaliation) or any related form of discrimination or harassment based on protected identity or identities.

Additionally, all OACC compliance professionals (Title VI, VII, and IX) can provide information about:

- George Mason's policies, procedures, and/or resources related to discrimination or harassment;
- Supportive measures, such as academic support, no contact orders, or schedule changes, which can be implemented to restore or preserve access to George Mason and/or protect the safety of the community;
- Resolution options for allegations of engaging in Prohibited Conduct or Prohibited Discrimination (formal investigation or informal resolution).

CONFIDENTIAL RESOURCES

(Individuals working in these spaces may not notify Title IX/OACC of possible Prohibited Conduct or Prohibited Discrimination):

- Student Support and Advocacy Center
- Student Health Services
- Counseling and Psychological Services
- Office of the University Ombudsperson

NONCONFIDENTIAL RESOURCES

(Individuals in these offices may offer support, but must still report possible Prohibited Conduct or Prohibited Discrimination to Title IX/OACC):

- Housing and Residence Life
- LGBTQ+ Resources Office
- Office of Student Conduct
- University Police and Public Safety

AMERICANS WITH DISABILITIES ACT

OACC is also charged with ensuring compliance with the Americans with Disabilities Act. OACC provides a process for employees to obtain workplace accommodations for disability, monitors and redresses physical accessibility barriers on campus, and ensures that individuals with disabilities do not face prohibited discrimination. Students seeking academic disability accommodations should

contact Disability Services within University Life for assistance. The ADA Coordinator also serves as the final level of appeal for a student who has concerns about their final, approved accommodations from Disability Services. Finally, OACC houses the Assistive Technology Initiative (ATI), which ensures all members of the George Mason community are provided with equivalent access to all information and communications technology (ICT) resources.

To make a workplace disability accommodation request or notify the university of an access barrier, visit oacc.gmu.edu

PATRIOTS AGAINST HAZING

At George Mason, we take pride in providing a safe and inclusive environment for our students, faculty, and staff. Hazing has no place in our community, and no one should be demeaned or exposed to harm to be involved in campus life. It is all our responsibility to keep our fellow Patriots safe and healthy. Let's all work together on hazing prevention to ensure hazing has no place at George Mason.

George Mason defines hazing as any action taken or situation created, recklessly or intentionally, to produce mental or physical discomfort, embarrassment, ridicule, or possibly cause mental or physical harm or injury to any person on or off the university's campuses, regardless of the participant's consent.

Per **Virginia Code Section 23.1-822 (Adam's Law)**,

George Mason provides a report of past hazing misconduct involving student organizations. The information includes the name of the student organization, the dates (if known) of the hazing behavior, the date such behavior was reported to the university, the dates of investigation and when the organization was found responsible, and a description of the findings. Reports of hazing that did not result in a finding of responsibility are not included. George Mason updates this information at least 10 calendar days prior to the start of each fall and spring semester and maintains the information for 10 years following the date of initial disclosure. For questions about this report, please contact the Office of Student Conduct at OSC@gmu.edu.

AVAILABLE RESOURCES:

Patriots Against Hazing Website:

si.gmu.edu/patriots-against-hazing

The website includes details on the following:

- Virginia Hazing Laws
- George Mason's Hazing Policy
- Patriots Against Hazing Workshops
- Hazing Prevention Resources
- Report Possible Hazing



MEET THE PATRIOT LEADERS



Afsana Ahmadi
she/her
Herat, Afghanistan
*Government and
International Politics*



Aden Ahmed
he/him
Kenya
Accounting



Mohammed Ali
he/him
Addis Ababa, Ethiopia
Computer Science



Douglas Alvarez-Perez
he/him
Alexandria, VA
*Systems and Industrial
Engineering*



Imani Anzaya
she/her
Charlotte, NC
*Communication, Public Relations
Concentration*



Ayreana Baskerville
she/her
Louisa, VA
Psychology; Sociology



Jalen Batten
he/him
Virginia Beach, VA
Education



Liliana Belen
she/her
Broadlands, VA
Social Work



Dani Booth
she/her
Alexandria, VA
Bioengineering



Mohamed Diallo
he/him
Senegal and France
Mechanical Engineering



Donesha George
she/her
Salisbury, MD
Psychology



Nargis Hamdard
she/her
Woodbridge, VA
Civil and Infrastructure Engineering



A'Mya Holland
she/her
Sterling, VA
Government and International Politics



Mehar Imam
she/her
India
Computer Science



Raj Jayaraja
he/him
India
Computer Science



Suemin Jeong
he/him
South Korea
Business, Accounting Concentration



China Jones-Burgess
she/her
Washington, D.C.
Human Development and Family Science



Mehreen Khan
she/her
Pakistan
Cyber Security Engineering



Vincent Le
he/him
Fairfax, VA
Mechanical Engineering



Beth Lipartiani
she/her
Fairfax, VA
Business, Accounting Concentration



Taniya Love
she/they
Hampton, VA
Kinesiology



Kalaya Luckey
she/her
West Point, VA
Computer Game Design



Isabella Magezi
she/her
Kampala, Uganda
Business, Finance and Accounting Concentrations



Ollie Maxted
they/them
Springfield, VA
Theater



Kendall McCard
she/her
Washington, D.C.
Psychology



Phoenix McCoy
she/her
Farmingville, NY
Public Administration



Yasir Mohamed
he/him
Nairobi, Kenya
Cyber Security Engineering



Shreyas Nagaradona
he/him
Hyderabad, Telangana, India
Computer Science



Nara Naranbaatar
she/her
Mongolia
Psychology



Kinguech Nguon
she/her
Phnom Penh, Cambodia
Business, Finance Concentration



Elyse Bendeck Ogren
she/her
Fairfax, VA
Psychology; Conflict Analysis and Resolution



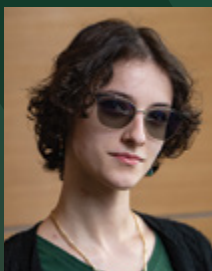
Zoe Oliver
she/her
Bear, DE
Communication



Evie Perks
she/her
Blacksburg, VA
Elementary Education



Andrea Pinto
she/her
Fairfax, VA
Biology



Celenia Plemmons
she/they
Stafford, VA
Forensic Science



Skylar Ringo
she/her
Waynesville, MO
Government and International Politics



Jalaysia Robinson
she/her
Richmond, VA
Sport Management



Devin Sampong
he/him
Winchester, VA
Civil and Infrastructure Engineering



Yazan Taha
he/him
Falls Church, VA
Biology; History



Sneha Thapa
she/her
Kathmandu, Nepal
Computational and Data Sciences



Grayson Tibbett
 he/him
 Tampa, FL
*Government and International
 Politics; Conflict Analysis
 and Resolution*



Arianna Torrez
 she/her
 Arlington, VA
Psychology



Jo Tromans
 she/her
 Fairfax, VA
Geography



Cynthia Urquiaga
 she/her
 Ellicott City, MD
Criminology, Law and Society

STUDENT COORDINATORS



Emma Howard
 she/her
 Woodbridge, VA
English



Clarisse Ladaban
 she/her
 Centreville, VA
Information Systems



Karen Araya Porras
 she/her
 Alexandria, VA
*Government and
 International Politics*



Kaylah Pratt
 she/her
 Waldorf, MD
*Integrative Studies,
 Legal Studies Concentration*



Sreemayukha Varshapally
 she/her
 Fairfax, VA
Forensic Science

**Patriot Leader applications open in the fall.
 Visit greenpolo.gmu.edu for more information!**

want to find an on-campus or part-time job?

LET **HANDSHAKE** DO THE WORK FOR YOU

handshake.gmu.edu



log in to your account now



University Life
UNIVERSITY CAREER SERVICES
George Mason University®

PATRIOTS

THRIVING  TOGETHER



SCAN FOR
RESOURCES

Mental Health and Well-Being Resources
for the George Mason Community



Well-Being at George Mason



The Center for the Advancement of Well-Being (CWB)

The Center for the Advancement of Well-Being (CWB) supports students in building lives filled with vitality, purpose, resilience, and engagement. We offer resources and practices that help you thrive academically, socially, and emotionally to succeed in a complex and changing world.



Mason Chooses Kindness

offers students resources and activities to spread kindness across campus. By promoting compassion and connection, we aim to create a supportive environment for everyone at George Mason.



LIBRARIES

George Mason University Libraries provide resources and services at four locations and online to help you with all your research needs. Fenwick Library houses most of George Mason Libraries' research collections, services, and programs in new dynamic spaces. Gateway Library in the Johnson Center provides a supportive environment for undergraduate learning and research. Mason Square Library supports the Schar School of Policy and Government, the Jimmy and Rosalynn Carter School for Peace and Conflict Resolution, and other graduate and professional programs. Mercer Library supports the undergraduate, graduate, and special programs offered on the Science and Technology Campus in Manassas.

Ace Your Research Project in Three Easy Steps

STEP ONE: GET HELP

- **Ask a Librarian (library.gmu.edu/ask)**
Chat online, email, or schedule a visit with a subject librarian for one-on-one research help.
- **Tutorials (library.gmu.edu/tutorials)**
Quick and easy tutorials on everything to get you research-ready, from "How to Read a Call Number" to "Anatomy of a Research Paper."
- **Workshops (library.gmu.edu/workshops)**
Free hands-on workshops on current research resources, strategies, and specialized software.
- **Subject Guides (infoguides.gmu.edu)**
Subject- and discipline-specific resources curated by experts are at your fingertips!

STEP TWO: FIND YOUR SOURCES (AND SAVE MONEY!)

- **Books, Journals, and News**
Use your George Mason username and password to log in, locate, and use more than 800 research databases filled with journal articles, images, data, media, and more.
- **TextSelect (library.gmu.edu/textselect)**
Check out required textbooks for required courses and save money!

- **Skill Development (library.gmu.edu/use/tech/rosetta)**

Unlimited 24/7 access to Rosetta Stone language software and LinkedIn Learning online training. Learn business skills, photography, web design and development, animation, and 30 different languages for free!

- **InterLibrary Loan (library.gmu.edu/use/ill)**

Can't find what you need at George Mason? You can request books, media, and articles from other libraries around the world.

STEP THREE: REFINE AND PUBLISH

- **Scholarly Productions @ the Research Commons (library.gmu.edu/sparc)**

Get help producing your research projects! SP@RC offers help on document design, poster design, citation software, presentations, and author rights.

- **George Mason Libraries Group Study Rooms (library.gmu.edu/use/study-rooms)**

Fenwick Library provides study rooms that can be scheduled up to 2 weeks in advance through the room reservation system.

🏠 library.gmu.edu





OFFICE OF STUDENT CREATIVE ACTIVITIES AND RESEARCH (OSCAR)

Do you want to assist a professor with their research while getting paid or earning credit?

Do you have a particular topic you would like to investigate?

Do you have an idea for a musical composition, dance production, theater performance piece, or any other creative work that you would like to create?

Do you want to travel to conferences to present your project?

The Office of Student Creative Activities and Research can help you do all of that!

We support undergraduates of all majors in the scholarly and creative endeavors through our work-study research assistantships, Undergraduate Research Scholars Program, and Undergraduate Student Travel Fund. Student scholarship is an integral part of your undergraduate experience and can open the door to many opportunities down the road, so take advantage of this valuable resource.

OSCAR is part of the Mason Impact initiative.

📍 Johnson Center, Room 228 📞 703-993-3794

✉️ oscar@gmu.edu 🏠 oscar.gmu.edu

GLOBAL EDUCATION OFFICE— STUDY ABROAD

The Global Education Office (GEO) fosters global learning through transformative experiences that prepare George Mason students, faculty, and staff to thrive in a connected world.

Benefits of Studying Abroad

Studying abroad is a great resume builder, and it sets you apart from the regular crowd of job seekers who have not gained an international perspective. You can enhance your George Mason experience and benefit from studying abroad in various ways:

- Gain proficiency in a foreign language.
- Adapt to new situations and apply them to “old” habits.
- Develop an understanding of different cultures.
- Learn how to tolerate ambiguity.
- Grow personally, professionally, and academically.

Global Faculty-Led Programs

Experience the George Mason classroom abroad through a wide range of programs led by George Mason faculty. Programs are offered during winter break, summer, spring, and fall, and are open to all.

Global Partner Programs

George Mason works with dozens of partner universities worldwide to provide quality study-abroad experiences at prestigious host institutions for summer, semester, and year-long programs. Students gain invaluable experience through full immersion at the host institution to earn credit toward their degree and develop cross-cultural and interpersonal skills.

Global Internships

Students gain experience and earn academic credit while interning at an international company or organization. Virtual, hybrid, and travel internships are available year-round, including part-time and full-time options for all majors and most career fields. First-year students are eligible to participate in their first spring or summer terms.

Global Gateway for Freshman Students

Students can participate in George Mason's freshman study-abroad program. Gateway destinations are situated in exciting international cities. Students spend their fall semester at George Mason and spring semester on site, pursuing coursework for their major and the Mason Core. Interested students must join before the fall semester. Incoming freshman students interested in the Global Gateway program can refer to their admission portal for the open invitation and link to the application.

Global Career Accelerator

George Mason's Global Career Accelerator offers online for-credit project-based courses in partnership with Podium Education. It prepares students with in-demand skills that combine applied technology and intercultural communication, which are both highly valued by employers in a global workforce.

Featured Scholarships

GEO Global Perspectives Scholarship

GEO Donor: Earnest and Florrie J. Walker

Education Abroad Scholarship

Build-Your-Own Internship Grant

Featured Exchange Program Grant

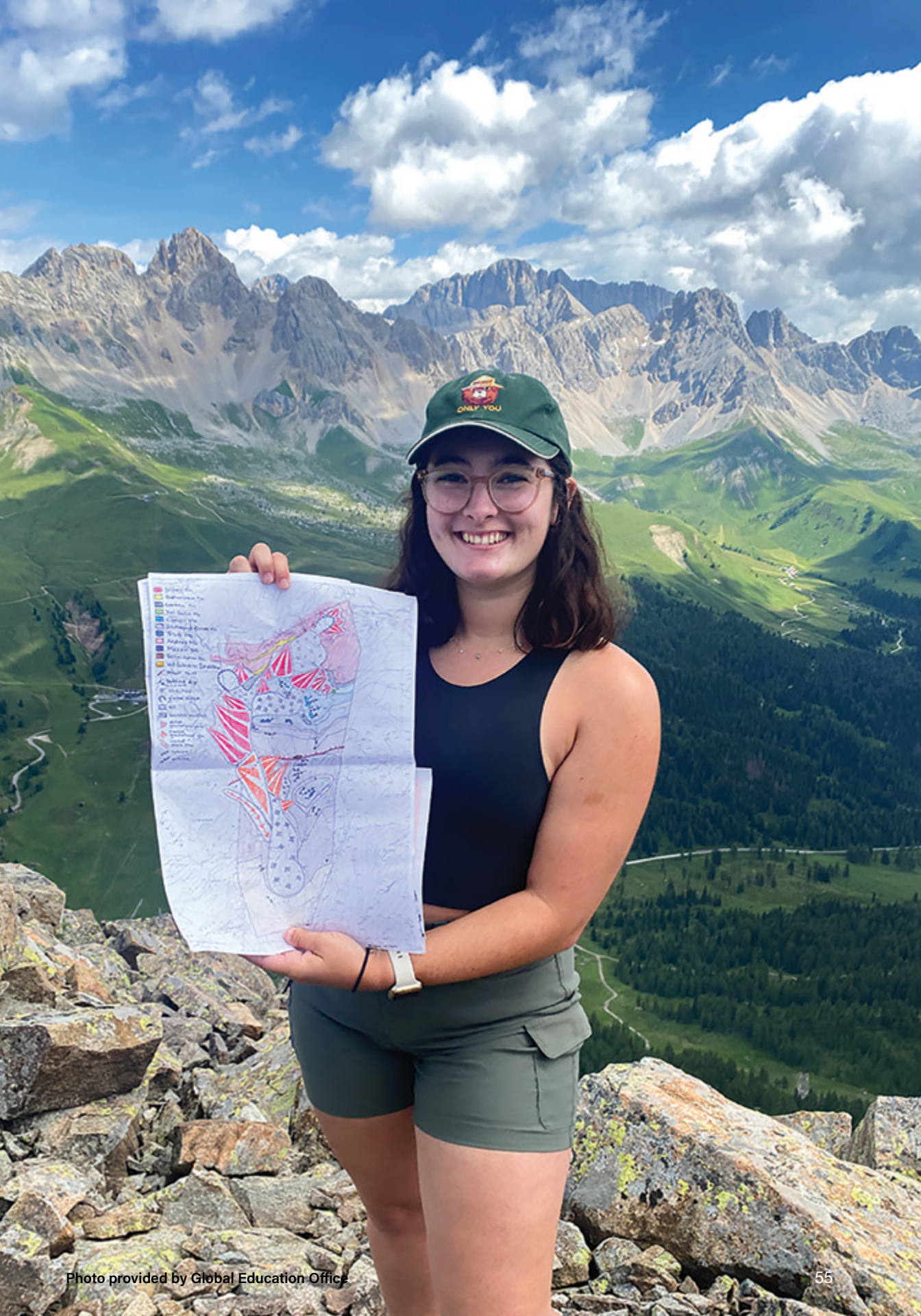
Scholarships are intended to help defray the costs associated with studying abroad. Award amounts are based on need and subject to availability of funds.

How to Apply

Visit studyabroad.gmu.edu for comprehensive listings and applications. Log in with your George Mason NetID, create a personal profile, and apply.

📍 Johnson Center, Room 235 📞 703-993-2154

✉️ goabroad@gmu.edu 🏠 studyabroad.gmu.edu



GET INVOLVED, GET CONNECTED USING MASON360

Enriching Student Experiences with Seamless Event Access and Engagement!



Your dedicated platform to:



Join Groups



Discover Service Opportunities



Register for Events and More

Visit mason360.gmu.edu or download on the App Store and Google Play

Start your conservation career now!

Our three residential semester-away programs are open to students in all academic majors.

Conservation, Biodiversity, and Society

Explore the ways that science, management and policy address current conservation issues in and out of the field.

Endangered Species Conservation

Learn to evaluate the vulnerabilities of small populations and develop successful conservation actions to save them from extinction.

Wildlife Ecology and Conservation

Apply cutting-edge field techniques to survey species in the wild and investigate ecological patterns and processes from local to global scales.



The Smithsonian-Mason School of Conservation (SMSC) offers compelling interdisciplinary conservation-based programming at the 3,200-acre Smithsonian's National Zoo and Conservation Biology Institute location in Front Royal, Virginia. SMSC students receive instruction from world-class Smithsonian researchers and Mason faculty, and gain incomparable hands-on conservation experience extending beyond classroom walls.

smc@gmu.edu

540-635-0115

smconservation.gmu.edu



ZAKO · DOHLUK · SULATMANITAH · URMIA ·
ERBIL · AKRE · NERMANSHAH · ROBANI ·

A photograph of a university campus in autumn. A student with a backpack is walking on a paved path from left to right. In the background, there is a large tree with green and yellowing leaves, and a blue brick building with several windows. In the foreground, there are several white benches with red and blue accents. The ground is covered with fallen leaves. A large yellow graphic overlay is on the right side of the image, containing the text 'University Services'.

University Services

STUDENT SERVICES CENTER

The Student Services Center is the first stop and the central resource for students seeking information and solutions related to registration, enrollment, financial aid, billing, academic records, and other student support services. The center assists new and continuing students at all points in their academic career, in one convenient location, thus eliminating the need to visit multiple offices on campus.

LOCATION

The Student Services Center provides in-person services on the lower level of SUB I on the Fairfax Campus and in Fuse (Suite 1200) at Mason Square in Arlington. Upon arrival, students should proceed to an available kiosk station and check in online. After checking in, students will be greeted by a center representative who can answer both general and specific questions, provide assistance with navigating university resources, and provide referrals to specialists when necessary.

Walk-in services are available Monday through Friday, 9 a.m. to 5 p.m., on the Fairfax Campus and Tuesday through Thursday, 2:30 to 6:30 p.m., at Mason Square.

Visit the Student Services Center Community at knowledge.mssc.gmu.edu to find answers on topics like admissions, billing and payments, financial aid, registration, and more.

Other virtual services are available at mssc.gmu.edu and via phone at 703-993-2000.



STUDENT ACCOUNTS

The mission of the Student Accounts Office is to provide excellent service for our students, staff, and faculty, while maintaining internal controls that ensure financial transactions are accurately processed and proper records are maintained.

Our website, studentaccounts.gmu.edu provides additional information and guides on the following topics:

Communication Policy

The Student Accounts Office communicates with students via their George Mason email address. Students are required to activate their George Mason email account and check it regularly.

Electronic Billing

We bill tuition and fees electronically through the Bill and Payment System. Paper invoices are not mailed. Semester ebills are sent electronically to students and authorized users. The ebill is a snapshot of the account at the time of invoicing; real-time account charges and balances may be viewed at any time via the My Account tab in the Bill and Payment System.

Authorized Users

For ease in submitting payments and staying up to date on financial information, students should set up their parents as authorized users in the Bill and Payment System. Authorized users will receive ebill notices and be able to access student accounts but are not able to view academic information.

Semester Payment Plans

Payment plans are available online through the Bill and Payment System for students who need to budget their accounts. Please note there is no convenience fee for electronic check payments. All payment plans require a \$30 contract fee, which is nonrefundable.

Late Payment Fee

A late payment fee of 10%, up to a maximum of \$125, may be charged to your account if your balance remains unpaid by the due date. You will be sent a message at your George Mason email address giving you the opportunity to avoid a late fee by paying your balance. Failure to receive a reminder e-bill confirming your charges does not waive the requirement to pay on time.

Collections

Accounts that remain unpaid at the end of each semester may be referred to a collection agency, credit bureaus, the Virginia Department of Taxation, and the Office of the Virginia Attorney General and may be subject to a collection fee.

Registration Policies and Class Drop Deadlines

Classes will not be canceled for nonpayment or nonattendance. Students are responsible for confirming their withdrawal from any classes by the published deadlines. Approved late schedule adjustments after the deadline to add classes will incur additional fees of up to \$125. Please visit studentaccounts.gmu.edu for penalty deadlines.

Tuition Insurance

We offer tuition insurance through GradGuard, which helps students and families overcome the financial losses that may result from events that force students to withdraw from the semester due to a covered medical reason. This coverage strengthens and broadens the scope of our existing refund policy by ensuring reimbursement for tuition, housing, and other payments if a student withdraws for any covered medical reason at any time during the semester. The deadline to purchase each term is up until the last day to drop classes with a 100% refund for the semester.

Direct Deposit

We encourage students to enroll in direct deposit to receive refunds electronically.

Financial Good Standing

Financial good standing and a university record clear of holds are required for students to receive services. Services, including, but not limited to, diploma release, class registration (add, drop, withdrawal, and so forth), and/or housing and meal plans will not be provided to students with a financial balance due or a hold of any kind on their record.

Third-Party Billing

Third-party billing requirements and procedures are available at studentaccounts.gmu.edu/third-party-billing-office.

STUDENT FINANCIAL AID

The mission of the Office of Student Financial Aid is to help make it financially possible for all admitted applicants to attend George Mason University. The office provides financial aid services to assist prospective and current students and their families. During the 2026–27 academic year, students will receive more than \$300 million in some form of financial assistance (grants, scholarships, work-study, and loans). An array of federal, state, and institutional financial aid programs help students at all economic levels pay for their college education.

Types of Financial Aid

FEDERAL GRANTS (Do not need to be repaid.)

Federal Pell Grant: These need-based grants for low-income undergraduate students provide access to postsecondary education. Grant amounts are dependent on the student's Free Application for Federal Student Aid (FAFSA) results, cost of attendance, and enrollment status.

Federal Supplemental Educational Opportunity Grant (FSEOG):

This grant is for undergraduate students with exceptional financial need.

STATE GRANTS (Do not need to be repaid.)

George Mason Out-of-State Grant: The purpose of the grant is to provide assistance to financially needy undergraduate out-of-state residents.

Virginia Guaranteed Assistance Program (VGAP): The purpose of the grant is to provide financially needy students who graduated from a Virginia high school with an incentive to attend college.

Virginia Commonwealth Award: This grant provides assistance to financially needy undergraduate Virginia residents.

SCHOLARSHIPS (Do not need to be repaid.)

There are many different resources for students to use when searching for scholarship opportunities. George Mason's Office of Student Financial Aid posts a list of

scholarships offered to students by George Mason University (referred to as "internal" scholarships) and a list of outside or external scholarships offered by a variety of external sources (agencies, companies, private donors, etc.) for undergraduate and graduate students as the scholarships become available.

FEDERAL WORK-STUDY (FWS)

George Mason University offers Federal Work-Study for eligible students to help pay for college expenses. This program allows students to work in a variety of part-time positions while building their resumes, time management skills, and job abilities.

LOANS

Various types of loans are available to assist in financing a student's education. After a student completes and submits a FAFSA, based on the student's eligibility, the Office of Student Financial Aid can offer Federal Direct Subsidized and/or Unsubsidized Loans. Loans offered will be based on full-time enrollment and are subject to proration if you do not attend full time.

Finances Should Not Be a Barrier to Investing in Your Future.

📍 SUB I

☎ 703-993-2000, 703-993-2350 (fax)

✉ finaid@gmu.edu

🏠 financialaid.gmu.edu





FEDERAL DIRECT LOANS (UNDERGRADUATE STUDENTS)

DEPENDENT STUDENTS

| YEAR | SUBSIDIZED | ADD'L UNSUBSIDIZED | TOTAL |
|-----------|------------|--------------------|---------|
| Freshman | \$3,500 | \$2,000 | \$5,500 |
| Sophomore | \$4,500 | \$2,000 | \$6,500 |
| Junior | \$5,500 | \$2,000 | \$7,500 |
| Senior | \$5,500 | \$2,000 | \$7,500 |

INDEPENDENT STUDENTS

| YEAR | SUBSIDIZED | ADD'L UNSUBSIDIZED | TOTAL |
|-----------|------------|--------------------|----------|
| Freshman | \$3,500 | \$6,000 | \$9,500 |
| Sophomore | \$4,500 | \$6,000 | \$10,500 |
| Junior | \$5,500 | \$7,000 | \$12,500 |
| Senior | \$5,500 | \$7,000 | \$12,500 |

FEDERAL DIRECT LOANS (GRADUATE STUDENTS)

| YEAR | ADD'L UNSUBSIDIZED | TOTAL |
|-------------------------|--------------------|----------|
| Graduate (Professional) | \$50,000 | \$50,000 |

IMPORTANT DATES TO REMEMBER

- March 1** FAFSA and VASA Priority Deadline for Freshman and Returning Undergraduate Students (to be considered for state grant eligibility)
- March 15** FAFSA Priority Deadline for All New Fall Transfer Undergraduate Students (to be considered for state grant eligibility)

- November 1** FAFSA Priority Deadline for All New Spring Transfer Undergraduate Students (to be considered for state grant eligibility)



INFORMATION TECHNOLOGY SERVICES



🏠 its.gmu.edu 📞 703-993-8870

Check out our “Getting Started for Students” guide at its.gmu.edu/get-started.

Don't forget to download the Mobile Mason app for Apple and Android devices.

Help and Support Resources

NEED HELP?

Information Technology Services (ITS) support is available 24/7, 365 days/year at its.gmu.edu/help.

TWO-FACTOR AUTHENTICATION

George Mason uses Duo Security to deliver two-factor authentication (2FA) when students access certain websites and applications. This second layer of protection makes personal information less vulnerable.

🏠 2fa.gmu.edu

STUDENT EMAIL

Microsoft 365 email is the official email for students. Directions for logging in for the first time are available at its.gmu.edu/get-started.

CANVAS

Canvas by Instructure, George Mason's learning management system, provides a secure login system and a variety of tools to manage both in-person and online courses. Some tools include assignments, discussions, modules, pages, and quizzes.

🏠 canvas.gmu.edu

Network Services

For more information about George Mason's network services see its.gmu.edu/network-access.

WI-FI NETWORK

Wi-Fi network access is provided in all academic, administrative, residential, recreational, and dining spaces. For the best Wi-Fi experience, connect to the eduoam network or ResNet in residence halls.

GUEST NETWORK

Guests of students may self-register for internet access over George Mason's Wi-Fi networks.

RESIDENT HALL SUPPORT (RESNET)

ResNet, provided by Boldyn Higher Education/Apogee, is a new and improved wired and Wi-Fi system located in the residence halls.

🏠 its.gmu.edu/resnet

PATRIOT VIRTUAL COMPUTING AND LABS (PVCL)

The Patriot Virtual Computing and Labs provides remote access to academic software to support coursework.

🏠 its.gmu.edu/pvcl

LINKEDIN LEARNING

George Mason has partnered with LinkedIn Learning to provide free, unlimited online training. The online subscription library offers students 24/7 access to thousands of videos on a broad range of subjects.

🏠 lil.gmu.edu

ZOOM

Zoom, gm.zoom.us, is a cloud-based web conferencing tool for video and audio conferencing, collaboration, chat, and webinars.

MICROSOFT 365

🏠 mso365.gmu.edu

MICROSOFT 365 APPS FOR ENTERPRISE

George Mason students can download and install the latest version of Microsoft 365 apps on up to five devices.

MICROSOFT COPILOT CHAT

Microsoft Copilot Chat is a secure, web-based AI assistant that can be used to solve problems, generate content, summarize documents, and explore ideas.

MICROSOFT TEAMS

Microsoft Teams is an enterprise-wide collaboration suite within Microsoft 365 and provides chat, audio calling, video calling, screen sharing, and more.

ONEDRIVE

George Mason students can access OneDrive within Microsoft 365 to store files in the cloud.

PATRIOTAI

PatriotAI offers secure, university-managed access to large language models that can aid academic work, studies, and student life.

🏠 patriotai.gmu.edu

Technology Spaces

COLLABORATIVE LEARNING HUB (CLUB)

The walk-in lab features Windows and Mac workstations, a walk-up help bar, sound space, 3D printers, and collaborative spaces that include digital imaging, video-editing, web development, and other software.

♥ **Fairfax:** Johnson Center, Room 311

COMPUTER LABS

♥ **Fairfax:** Innovation Hall, Room 301, and Johnson Center, Room 342

♥ **Mason Square:** Van Metre Hall, Room 211

♥ **Science and Technology:** Katherine G. Johnson Hall, Room 250

STUDENT TECHNOLOGY ASSISTANCE AND RESOURCE LAB (STAR)

The multimedia computer and equipment checkout facility provides students with the space and resources to complete creative projects.

♥ **Fairfax:** Johnson Center, Room 229



Virtual mental health platform designed for college students to have 24/7 access to various resources.

Scan the QR code to learn more about the resources available.



AMPLIFY YOUR CAMPUS EXPERIENCE



SHOPMASON

SCAN ME



TO LEARN MORE

Your one-stop shop for your everyday needs at George Mason. From dining, vending machines, and campus shuttles to package delivery, locker rentals, video games and billiards, and even event tickets—we have got you covered!

PATRIOT PERKS

SCAN ME



TO LEARN MORE

Explore 200+ exclusive discounts offered to students, faculty, staff, retirees, and alumni in and around Northern Virginia!



Follow us @shopmason

Visit shopmason.gmu.edu to explore more





the ShopMason Map

MAP KEY

- 1. The Johnson Center
- 2. The Hub
- 3. S&S 1
- 4. Eaglebank Area
- 5. Southside dining hall
- 6. Ike's dining hall
- 7. The globe dining hall
- 8. The Spot dining hall
- M Mason Shuttle Stops
- The UPS Store
- Print & Mail Hub
- Dining Locations
- Cover Packet
- Mills Fargo + ATMS
- Mason Card Office



PARKING AND TRANSPORTATION

George Mason offers an array of parking, transit, and transportation choices to students, faculty, and staff. We encourage you to have more than one way to get to campus in order to reduce the number of times you drive alone.

Below is a brief overview of your options. For more details, visit our website at transportation.gmu.edu.

We are happy to assist you with any questions. Contact us at transpo@gmu.edu, by phone at 703-993-2828, or on X [@MasonShuttles](https://twitter.com/MasonShuttles).

George Mason Commutes

Looking for someone to share a ride or commute together by car, bike, or transit? Visit masoncommutes.com to get started.

Parking

- On the Fairfax Campus, we offer a host of daily, weekly, monthly, and semester parking options at various price points.
- For parking options, pricing, and permit purchase, including those at Mason Square and the Science and Technology Campus, please visit parking.gmu.edu to get started.
- Free Parking Available: There is a no-cost parking option that utilizes George Mason Shuttles. You can park for free at the Manassas Mall and take the Fairfax/SciTech shuttle route to either campus. For all shuttle schedules, visit shuttle.gmu.edu.

◆ **Parking Services** Building (next to Shenandoah Parking Deck)

☎ 703-993-2710 ✉ parking@gmu.edu

🏠 parking.gmu.edu 📍 [@MasonParking](https://twitter.com/MasonParking)

George Mason Shuttles

George Mason Shuttles offer multiple routes to transport the university community to a variety of destinations. George Mason Shuttles are free, but require a Mason ID to ride.

- For times and stops, please visit shuttle.gmu.edu. Schedules can be impacted by traffic volume, accidents, and road conditions. Don't cut it too close. Schedule yourself to arrive early, just in case. George Mason Shuttles use the TransLoc real-time bus tracking site.
- Shuttle schedules are subject to change during emergencies, extreme weather conditions, holidays, and student breaks. Be sure to check shuttle.gmu.edu for the latest scheduling information.



See shuttle routes or get the shuttle tracker app at shuttle.gmu.edu

Transit

CUE BUS

George Mason students, faculty, and staff have free access to the Fairfax City CUE Bus. The CUE Bus has routes in Fairfax City, all of which end at the Vienna Metro Station. For details and the schedule, visit cuebus.org. The CUE Bus stops on campus at Rappahannock River Lane (next to Merten Hall) and uses the TransLoc website and app to track bus arrival times.

METRO

The closest Metro stop in Fairfax is the Vienna Metro Station on the Orange Line. From there, you can travel to various locations in Washington, D.C., and to Mason Square in Arlington (Virginia Square-GMU Metro Station). For a Metro rail map, visit wmata.com/schedules/maps. Please note that Metro schedules and service levels are subject to change. To stay up to date, sign up for Metro Alerts at wmata.com/riders-guide/subscribe.

PUBLIC BUSES

The Washington Metropolitan Area Transit Authority (WMATA) runs bus services in multiple jurisdictions in Virginia, Maryland, and Washington, D.C. If you are traveling within Fairfax County, check out the Fairfax Connector. Within Arlington County, you can ride on the ART buses and in Prince William County, look into the PRTC buses. All of these buses, the CUE Bus, Metro trains, and more can be routed using the WMATA trip planner at wmata.com. Map it out before you go!

REGIONAL SHUTTLES

Our regional shuttle program provides students with convenient, affordable transportation between the Fairfax Campus and major destinations like New York City and the Hampton Roads and Virginia Beach area during Thanksgiving and spring break. With multiple stops along the way, including Baltimore, Philadelphia, and New Jersey, students can easily travel home or to popular destinations without the stress of driving or coordinating rides. The program continues to grow each year and helps hundreds of students travel safely and efficiently during peak break periods.

Transportation

BIKING OPTIONS

George Mason has more than 1,300 bike parking spots on campus and is a silver-rated Bicycle-Friendly University in Fairfax and bronze-rated at Mason Square. Register your bicycle at bike.gmu.edu and receive a free U-lock, registration sticker, bike light, and more.

As a student, you also have access to a \$25 annual membership to Capital Bikeshare. Bikeshare stations are located on the Fairfax Campus and at Mason Square, as well as throughout the region.

To find out more about bicycling at George Mason and to see a map of facilities, visit bike.gmu.edu.

CARPOOL ZONES: FLEXIBLE AND EASY

Unlock a 20 to 40 percent rebate on your parking permit when you sign up for our carpool program.

- Premium Carpool Program: Save some money!
- Application required

More information on the premium student carpool option is available at transportation.gmu.edu/carpool-programs.

ZIPCAR

- Rent a car just when you need it, by the hour or the day
- Available on the Fairfax Campus
- Sign up at zipcar.com/zipgmu
- Gas and secondary insurance are included in the rental rate

TRANSPORTATION ADMINISTRATION

☎ 703-993-2828 ✉ transpo@gmu.edu
 🏠 transportation.gmu.edu 📧 @MasonShuttles

MASON CARD OFFICE

The Mason Card Office issues Mason IDs, administers meal plans, and coordinates the Mason Money program.

Mason ID

The Mason ID is an integral part of campus life and provides access to the following:

- Meal Plans
- Residence Halls
- George Mason Athletic Events
- University Libraries
- George Mason Shuttle
- Printing
- Mason Money
- Exams
- Lab/Room Access
- Center for the Arts Performances
- Patriot Perks Discounts

Students should submit a picture for the Mason ID online. It must be taken against a white background from the shoulders up. For additional requirements, visit the following site: masoncard.gmu.edu/mason-id.

You must visit the Mason Card Office located in Student Union Building I and show a government-issued photo ID (passport, military ID, or driver's license) to obtain a physical Mason ID. Or, mobile credentials can be provided once the uploaded photo has been approved.

Only one Mason ID is allowed, either mobile or physical. Visit the Mason Mobile ID website for more information at masoncard.gmu.edu/mason-ide.

LOST MASON IDS

There is a fee for lost, stolen, or damaged Mason IDs. The Office of Housing and Residence Life offers temporary cards for residence hall access for 48 hours.

Meal Plans

George Mason University's dining program promotes community dining and healthy choices. Choose from four dining halls and 25 retail locations across three campuses. Plans are billed to the student account, which allows for tax-exempt dining. Visit mealplans.gmu.edu for more information.

Meal plan usage and changes can be viewed on the Atrium Campus Connect app or online at masoncard.gmu.edu/meal-plans.

Students Living on Campus

Students choose their freshman meal plan during housing selection. The Independence plan provides unlimited access into the dining halls, three guest swipes, and Dining Dollars.

Dining Dollars are accepted in all dining venues and available in \$100 increments up to \$500. Unused balances roll over from fall to spring semesters.

Students Living Off Campus

Students living off campus can take advantage of meal plans designed specifically for them. Save time, money, and up to 11 percent with tax-free dining.

Visit mealplans.gmu.edu for more information.

Mason Money

Mason Money is a debit card program. Funds can be loaded onto the Mason ID to make purchases both on and off campus. For deposits and a complete list of retailers visit masoncard.gmu.edu/mason-money.

Dining Dollars vs. Mason Money

| DINING DOLLARS | MASON MONEY |
|--|--|
| Part of the meal plan accessed with the Mason ID | A declining account attached to Mason ID |
| Save up to 11 percent with tax-free dining | Taxable on all purchases |
| Remaining balance rolls from fall to spring | Balance stays throughout matriculation |
| Accepted by Starship (robot delivery) | Accepted by Starship (robot delivery) and Grubhub |
| Only accepted at dining venues on campus | Accepted at all on- and off-campus dining venues, the bookstore, for printing, etc. |
| Billed to the student account | Funds deposited via Online Card Office or Mason Card Office. Visa/MasterCard/Discover/AMEX are accepted. |

 SUB I, Room 1203
 703-993-1004  mealplans.gmu.edu
 masoncard.gmu.edu



MASON DINING

Whether you are living on or off campus, our meal plan options are available to all students. Choose from a variety of plans that suit your lifestyle and preferences: from all-you-care-to-eat experiences in our dining halls to 25 retail locations featuring national brands and diverse culinary choices. Discover your choices online at dining.gmu.edu by taking a dining quiz.

View menus for every dining hall on our website or by downloading the Dine On Campus app. Menu items include detailed nutritional information and allergen content to help you make informed choices each day.

Mason Dining is proud to be recognized by Spokin as the #1 allergy-friendly college dining program in the nation. Our commitment to inclusive dining is reflected in offerings such as Delicious Without, our allergen-conscious station, and the AG Zone, an allergen-controlled pantry designed to support students with dietary restrictions. Students also have access to our dedicated on-campus dietitian for personalized nutritional guidance.

Sustainability and diversity are at the core of our dining program. Our four dining halls incorporate eco-friendly practices and emphasize local sourcing and responsible purchasing. Through initiatives such as Waste Not 2.0, partnerships with regional farms, and our reusable container program, we are committed to reducing our environmental impact while enhancing your dining experience. Plant-forward diners can enjoy a wide variety

of vegetarian and vegan selections across all dining halls, each offering extensive plant-forward options every day, while The Spot provides an exclusively plant-forward experience. All dining halls serve halal meats, and The Eaterie features The Mason Mensch, our certified kosher station, which also offers certified halal meals.

Need a quick meal between classes or during a late-night study session? Order delivery through Mason Dining's Starship robot fleet, or place a mobile pickup order for convenience and speed. The Starship Deliveries app is available on both the App Store and Google Play. Elevate your dining experience at George Mason! For questions or assistance, please email dining@gmu.edu or visit dining.gmu.edu.

✉ dining@gmu.edu



📷 @mason_dining



Scan the QR code to take the dining quiz!



PRINT AND MAIL SERVICES

Student Printing

George Mason University has partnered with Canon to provide print services for all students. George Mason uses a "Follow Me Print" system in which students can send their print jobs from any computer connected to the university's computer network. This network includes campus-owned devices and personal computers or mobile devices. Students can retrieve their print jobs from any of the almost 300 multifunction devices located across all George Mason campuses.

Students are not required to purchase a personal printer, as Canon devices are available in all on-campus residence halls. Each residence hall will have at least one device available 24 hours a day, seven days a week. Devices are also available in all areas frequented by students.

The Canon devices can also be used for copying and scanning.

Mason Money is used to pay for printing at a cost of \$0.10 for each black-and-white print/copy and \$0.25 for each color print/copy. There is no charge for scanning. Students will not be charged until they release their job(s) at a device.

Canon operates a full-service print shop on campus to fulfill all printing needs. Products include, but are not limited to, posters, banners, flyers, business cards, bound items, and yard signs. More information about the Canon Print Hub can be found at gmuprinthub.com.

Mail Procedures

All students living on campus are assigned a mailbox number by mail services free of charge. This number will be each student's unique identifier for sending and receiving paper mail and packages.

Student mailing addresses are written as follows:

First Name Last Name
4450 Rivanna River Way #XXXX (Student's
unique mailbox number)
Fairfax, VA 22030

All mail and packages MUST contain the mailbox number.

All student mail is stored at The Hub on the lower level in the Mail Services area.

Paper mail (letters, magazines, etc.) is stored in file folders behind the Mail Services counter. Students will walk up to the counter and request their paper mail from a Mail Services representative.

Packages are stored in computerized smart lockers. Students will receive an email/text message alerting them to the presence of a package. This message will contain the locker number and four-digit code to retrieve the package. If the item is oversized, oddly sized, or perishable, the message will instruct them to pick up the package at the counter.

There is no notification for paper mail.

Mail Services offers outbound parcel service through the U.S. Postal Service and UPS. Payment can be made by credit/debit card or Mason Money.

For more information, please visit printandmail.gmu.edu.



MASON ARTS FOR MASON CORE

EMBRACE YOUR CREATIVE ENERGY AND COMPLETE
YOUR MASON CORE ARTS REQUIREMENT AT THE SAME TIME.



Step into the spotlight with THR 210

Start your screenplay with FAVS 280

Toot your horn or lift your voice in MUSI 383 or 381

For a full list of all your Mason Arts for
Mason Core options, explore the catalog.

catalog.gmu.edu/mason-core

MASONARTS



FAIRFAX CAMPUS MAP KEY
 4400 University Drive, Fairfax, Virginia 22030
 703-993-1000 | gmu.edu



Find out where you are and where you need to go.
 Stay connected with the **MOBILE MASON** app. Visit gettheapp.gmu.edu.

- | | | |
|--|--|--|
| 1 L-5 Activities Building | 20 U-5 Facilities Administration | 38 S-10 Nguyen Engineering Building |
| 2 T-11 Aquatic and Fitness Center | 21 V-4 Facilities Management, Archives | 39 T-2 Northeast Module |
| 3 P-5 Aquia Building | 22 V-4 Facilities Management, Operations | 40 T-3 Northeast Module II |
| 4 R-9 Art and Design Building | 23 R-5 Fenwick Library | 41 S-12 Nottoway Annex |
| 5 P-8 Buchanan Hall | 24 K-3 Field House and Module | 42 O-7 Parking Deck, Mason Pond |
| 6 V-5 Carow Hall | 25 P-4 Finley Building | 43 R-2 Parking Deck, Rappahannock River |
| 7 G-5 Carty House | 26 Q-7 George Mason Statue and Enslaved People of George Mason Memorial | 44 T-8 Parking Deck, Shenandoah |
| 8 P-7 Center for the Arts/Concert Hall | 27 V-9 Greenhouse | 45 S-8 Parking Services |
| 9 U-5 Central Heating and Cooling Plant | 28 P-6 Harris Theatre | 46 P-2 Peterson Hall |
| 10 S-1 Child Development Center | 29 Q-5 Horizon Hall | 47 R-7 Planetary Hall |
| 11 Q-6 Clock | 30 Q-9 Innovation Hall | 48 R-1 Police and Safety Headquarters |
| 12 Q-8 College Hall | 31 Q-7 Johnson Center/Admissions | 49 M-6 Recreation and Athletic Complex (RAC) |
| 13 O-8 Cross Cottage | 32 I-6 Kelley II - 10716 Kelley Drive | 50 W-4 Recycling Center |
| 14 R-6 David King Hall | 33 W-6 Krasnow Institute | 51 S-9 Research Hall |
| 15 P-7 de Laski Performing Arts Building | 34 P-4 Krug Hall | 52 T-4 Rivanna Module |
| 16 O-10 EagleBank Arena | 35 Q-4 Lecture Hall | 53 W-8 Roberts House |
| 17 Q-4 East Building | 36 Q-2 Merten Hall | 54 P-5 Student Union Building I (SUB I) |
| 18 R-8 Enterprise Hall | 37 Q-8 Music/Theater Building | 55 P-8 TheaterSpace/Black Box |
| 19 S-7 Exploratory Hall | | 56 S-6 The Hub |



UNIVERSITY SERVICES

- 57 O-4 Thompson Hall
- 58 V-5 Warehouse, Customer Service Center
- 59 P-4 West Building
- 60 L-6 West PE Module

STUDENT HOUSING
Rappahannock Neighborhood

- 61 R-4 Blue Ridge
- 62 T-3 Eastern Shore
- 63 S-3 Hampton Roads and the Spot
- 64 R-3 Northern Neck
- 65 R-5 Piedmont*/Housing Office
- 66 R-4 Sandbridge
- 67 S-5 Skyline Fitness Center
- 68 S-6 Southside Dining
- 69 S-5 Tidewater
- 70 R-4 Commonwealth
- 71 S-4 Dominion

The Commons

- 72 S-4 Amherst
- 73 T-4 Brunswick
- 74 T-5 Carroll
- 75 T-5 Dickenson
- 76 S-5 Essex
- 77 S-5 Franklin
- 78 S-5 Grayson
- 79 S-5 Hanover

Shenandoah Neighborhood

- 80 K-7 Ángel Cabrera Global Center
- 81 U-9 Liberty Square
- 82 U-11 Potomac Heights
- 83 N-2 Rogers
- 84 N-3 Whitetop

Presidents Park

- 85 V-7 Adams
- 86 V-8 Eisenhower* and Ike's Diner
- 87 U-8 Harrison

- 88 V-8 Jackson
- 89 U-7 Jefferson
- 90 V-8 Kennedy
- 91 V-9 Lincoln
- 92 V-7 Madison
- 93 U-7 Monroe
- 94 V-9 Roosevelt
- 95 V-9 Taylor
- 96 V-7 Truman
- 97 V-7 Washington
- 98 V-8 Wilson

FACULTY/STAFF HOUSING

- 99 W-3 Masonvale

*24-hour Residential Desk
Stay up to date with construction information at building.gmu.edu.
Revised 04/2026



ARE YOU MASON READY?

 ready.gmu.edu

Emergency Notifications

Mason Alert is George Mason University's **emergency notification system** that is used to send emergency notifications and timely warnings to the university community via text, email, telephone call, and digital signage. **Scan the QR code below** or visit alert.gmu.edu to learn more.



Emergency Preparedness App

Rave Guardian is a campus safety mobile application that enhances preparedness and safety on campus using interactive features and allowing students to create a virtual network of friends, family, and campus safety personnel. The application also includes anonymous, two-way crime reporting through text and picture messaging.

The application is available to all students with a university email address for free through the iTunes store and Google Play store.

Learn more by visiting
ready.gmu.edu/rave-guardian



University Life
MASON RECREATION
 George Mason University®

MASON RECREATION



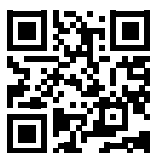
Patriots learn big, play hard, and live well! Come explore all that Mason Recreation has to offer. Whether you are into fitness, aquatics, intramurai sports, club sports, outdoor adventures, or team building—Mason Recreation has something for everyone!



UNIVERSITY SERVICES



Scan the QR code to learn more!



recreation.gmu.edu



703-993-5323



masonrec@gmu.edu





Academic Schools and Colleges

COLLEGE OF EDUCATION AND HUMAN DEVELOPMENT

The College of Education and Human Development is a vibrant and inclusive scholarly community promoting learning and development across the life span. Our three schools offer a diverse range of academic programs and transdisciplinary opportunities that integrate theory with practical experience to equip students with the knowledge, skills, and preparation needed to address the challenges of today's dynamic workforce. Our School of Education—the largest and most comprehensive in Virginia—is the alma mater for one third of teachers and administrators in Northern Virginia's world-class school systems. Our School of Sport, Recreation, and Tourism Management's comprehensive sport management, event management, tourism, and recreation programs engage students in real-world experiences in our nation's capital and provide graduates with a unique and competitive advantage in the marketplace. Our School of Kinesiology offers students a variety of experiential learning opportunities that prepare them to improve the health, movement, and performance of people in their communities.

CEHD Student and Academic Affairs

Your home for student communications and support, including

- General CEHD information
- Student involvement
- Academic success assistance
- Scholarships
- Appeals and exceptions to policy
- Student concerns and grievances

Email CEHDSAA@gmu.edu to learn more about any of these services.

ACADEMIC ADVISING

Find your advisor at cehd.gmu.edu/current-students/advising.

Office of Teacher Preparation

- Teacher preparation pathway advising for current and prospective students
- Licensure information
- Content area coursework review

Email preteach@gmu.edu for more information on teacher preparation.

Undergraduate Academic Majors

SCHOOL OF EDUCATION

Elementary Education, BSEd
Inclusive Early Childhood Education, BSEd
Physical Education, BSEd
Special Education, BSEd
Secondary Education, BSEd

SCHOOL OF SPORT, RECREATION, AND TOURISM MANAGEMENT

Recreation Management, BS
Sports Management, BS
Tourism and Events Management, BS

SCHOOL OF KINESIOLOGY

Kinesiology, BS

Minors and Undergraduate Certificates

Consider adding a minor or certificate to complement your interests and career goals. Visit cehd.gmu.edu/academics/undergraduate for more information.

American Sign Language Minor
Assistive Technology Minor
Coaching Minor
Conflict Resolution Education Minor
Early Childhood Education for Diverse Learners Minor
Educational Psychology Minor
Esports Management Minor
Event Technical Production Minor
Food and Beverage Management Certificate
Hospitality Management Minor
Human Dimensions of Natural Resource Recreation Minor
Kinesiology Minor
Mild Disabilities Minor
Personal Health and Wellness Minor
Recreation Management Minor
Severe Disabilities Minor
Sport and American Culture Minor
Sport and Computer Game Design Minor
Sport and Conflict Resolution Minor
Sport Communication Minor
Sport Management Minor
Sports Analytics Minor
Tourism and Events Management Minor
Visual Impairment and Blindness Minor
Wine and Craft Beverage Management

Bachelor's/Accelerated Master's Programs

Many CEHD undergraduate programs have an associated accelerated master's program. Learn more at cehd.gmu.edu/bachelors-accelerated-masters-program.

cehd.gmu.edu ☎ 703-993-2080

COLLEGE OF PUBLIC HEALTH

The College of Public Health (CPH) includes the Departments of Global and Community Health, Health Administration and Policy, Nutrition and Food Studies, and Social Work as well as the School of Nursing. Located in Peterson Family Health Sciences Hall, the college features a community clinic, advanced nursing simulation and informatics labs, and a high-tech nutrition kitchen. CPH enrolls more than 1,800 undergraduates and 1,350 graduate students across a range of degree and certificate programs.

Experiential learning is central to the CPH mission. Students participate in faculty research, professional development, community service, study-abroad programs, and leadership activities. Through the Mason and Partners Clinics, they gain hands-on experience while providing more than \$90,000 in free monthly health care to vulnerable community members.

CPH cultivates a vibrant, inclusive community grounded in interdisciplinary education, helping students develop analytical, creative, and ethical decision-making skills. With strong partnerships across regional health and human service organizations and more than 200 practicum sites, students receive extensive real-world training supported by professional and faculty advisors as they work toward their academic and career goals.

ACADEMIC MAJORS

Community Health, BS

Concentrations: Standard Program, Global Health, Clinical Science, Nutrition, Physical Activity and Public Health

Health Administration, BS

Concentrations: Health Systems Management, Assisted Living/Senior Housing Administration

Health Informatics, BS

Nursing, BSN

Pathways: Direct Entry Freshman, Direct Entry Transfers and/or current George Mason students, Accelerated Second Degree, RN to BSN, Co-Enrollment (Veteran and Non-Veteran), Direct Admission

Social Work, BSW

ACADEMIC MINORS

Aging Studies

Food Systems

Global Health

Health and Social Policy

Health Information Technology

Health Systems Management

Nutrition

Physical Activity in Public Health

Public Health

Senior Housing Administration

Social Work

Health Practice Management Undergraduate Certificate

 publichealth.gmu.edu  703-993-1901

BACHELOR'S/ACCELERATED MASTER'S DEGREES

Bachelor's degree (any)/Health Informatics, MS

Bachelor's degree (any)/Nutrition, MS

Bachelor's degree (any)/Public Health, MPH

Health Administration, BS/Health Systems Management, MHA



COLLEGE OF HUMANITIES AND SOCIAL SCIENCES

Offering more than 20 academic programs and numerous opportunities to blend the intellectual with the practical, the College of Humanities and Social Sciences (CHSS) prepares students to meet the needs of today's society and the demands of the future.

As a student in CHSS, you will develop career-relevant skills sought by employers, challenge yourself through academic pursuits and individual research projects, and take advantage of experiential learning opportunities.

Here are a few ways you can:

CONNECT TO THE COLLEGE

- Take on a leadership role as a CHSS Ambassador
- Join or start a club in your major
- Attend a lunch with the dean
- Serve as a peer mentor for other CHSS students

LEARN FROM EXPERIENCE

- Complete honors in the major coursework
- Engage in faculty-mentored research and share it at our annual CHSS Undergraduate Research Symposium
- Become a Learning Assistant for an introductory level course in your major
- Study abroad to learn a new language, pursue an international internship, or fulfill degree requirements

DISCOVER CAREER GOALS

- Meet with our Career Services-CHSS liaison
- Enroll in one of our College-to-Career courses
- Pursue an internship in your field
- Attend one of our LinkUp events geared toward connecting students with our alumni and discussing career choices and paths

For more information about our academic majors, concentrations, and more than 70 minors, please visit our website.

BACHELOR'S/ACCELERATED MASTER'S PROGRAMS

Many of our majors have an associated accelerated master's pathway. If you would like to learn more about these pathways, please visit chss.gmu.edu/programs/accelerated.

ACADEMIC MAJORS

Anthropology, BA
Art History, BA
Communication, BA
Creative Writing, BFA
Criminology, Law and Society, BA or BS
Economics, BA or BS
English, BA
Environmental and Sustainability Studies, BA*
Foreign Languages, BA
Concentrations: Arabic, Chinese, French, Korean and Spanish
Global Affairs, BA
History, BA
Human Development and Family Science, BA**
Individualized Study, BIS*
Integrative Studies, BA or BS*
Philosophy, BA
Psychology, BA or BS
Religious Studies, BA
Russian and Eurasian Studies, BA
Sociology, BA

* Offered by the School of Integrative Studies within CHSS

** Co-offered by the College of Education and Human Development

🏠 academicaffairs.chss.gmu.edu 📞 703-993-8725

COLLEGE OF SCIENCE

The College of Science (COS) plays the central role in undergraduate and graduate education and research in science and math at George Mason University. The college serves the local community and the nation by providing world-class leadership in a wide variety of areas important to modern society. All students within the college are strongly encouraged to take advantage of the many research opportunities available to them.

ACADEMIC MAJORS

Astronomy, BS*

Atmospheric Science, BS*

Biology, BA or BS*

Concentration for BA: Biological Illustration

Concentrations for BS: Biopsychology, Biotechnology and Molecular Biology, Environmental and Conservation Biology, Microbiology

Chemistry, BA or BS*

Concentrations: Analytical Chemistry, Biochemistry, Environmental Chemistry, Materials Chemistry

Computational and Data Sciences, BS*

Environmental Science, BS*

Concentrations: Conservation; Ecological Science; Environmental Health; Human and Ecosystem Response to Climate Change; Marine, Estuarine, and Freshwater Ecology; Wildlife

Environmental and Sustainability Studies, BA**

Forensic Science, BS*

Concentrations: Criminalistics, Forensic Biology, Forensic Chemistry, Interdisciplinary Forensic Science

Geography, BA or BS*

Concentrations (BA only): Environmental Geography, Geanthropology, Geoinformatics, Geospatial Intelligence, Health Geography, Urban Science

Geology, BA or BS*

Concentrations (BS only): Earth Surface Processes, Environmental Geoscience, Geology, Oceanography and Estuarine Science, Paleontology

Mathematics, BA or BS*

Concentrations (BS only): Actuarial Mathematics, Applied Mathematics, Data Science, Individualized, Mathematical Statistics, Pure Mathematics

Medical Laboratory Sciences, BS

Neuroscience, BS*

Physics, BS*

Concentrations: Applied and Engineering Physics, Astrophysics, Computational Physics

Undeclared COS

**Also available as a minor*

***Joint program with the College of Humanities and Social Sciences*

Refer to the Academic Minors pages for the full list of minors available (page 92).

science.gmu.edu ☎ 703-993-9532



COLLEGE OF VISUAL AND PERFORMING ARTS

Our College of Visual and Performing Arts (CVPA) students regularly perform, create, exhibit, and develop unique and inspired art—in whatever form that takes. Each program features a wide range of discipline-based technique courses and academic preparation in the history and theory of the art form. Many classes within CVPA are also open to non-majors, and numerous courses fulfill Mason Core requirements.

An audition, portfolio, or writing sample review is required for acceptance into most CVPA majors.

A Community of Artists

CVPA students have many ways to express their creativity:

- The CVPA Residential Learning Community for first-year students and Arts Residential Learning Community for upper-level students
- Navigation Press—artists work directly with students
- Mason Players and theatrical productions are **open to all George Mason students** for both technical positions and casting
- Music lessons and many ensembles, including the Green Machine, are also **open to all George Mason students**

Free student tickets to performances at the Center for the Arts (cfa.gmu.edu/tickets/free-student-tickets)

- Fall Film Showcase and spring Mason Film Festival
- Senior Game Design Expo
- Mason Dance Company performances throughout the year, highlighted by the Spring Dance Gala

Schools and Programs in the College

SCHOOL OF ART (art.gmu.edu)

Faculty and students in the School of Art work together and across disciplines to experiment and challenge conventional thinking in a hands-on adaptive curriculum. We offer concentrations in graphic design or studio arts, including photography, printmaking, painting, drawing, and sculpture.

COMPUTER GAME DESIGN (game.gmu.edu)

Computer game design students use state-of-the-art technology to create their own games. Because our program leads to a BFA, our approach goes beyond basic coding and programming to incorporate graphic design elements, animation, and game theory. Students work in a team environment but specialize in what speaks to them.

SCHOOL OF DANCE (dance.gmu.edu)

Dance majors train and perform with the rigor of a conservatory. The program also offers courses in a variety of dance styles, plus many global dance experiences for all university students.

FILM AND VIDEO STUDIES (favs.gmu.edu)

The Film and Video Studies Program trains students to take a project from conception through creation, production, and post-production in a variety of film and video styles. Students can choose optional pathways in cinematography, directing, editing, producing, screenwriting, or sound.

REVA AND SID DEWBERRY FAMILY SCHOOL OF MUSIC (music.gmu.edu)

Dewberry School of Music students learn from active performers, conductors, and composers who are among the most distinguished experts in their fields. Instruction is rigorous, yet conducted in a nurturing environment.

SCHOOL OF THEATER (theater.gmu.edu)

The School of Theater explores and expresses the human spirit through the study of drama's historical, contemporary, and cultural traditions; training in the craft; and the presentation of plays.

ARTS MANAGEMENT (artsmanagement.gmu.edu)

The arts management minor is open to CVPA and art history majors. Arts management offers many career paths that rely on a strong foundation in one or more art forms and requires specific knowledge and skills in administration and management.

Accelerated Master's Programs

Undergraduate CVPA majors in the School of Art and the Dewberry School of Music lead into certain master's degree programs—in art education with licensure (MAT), graphic design (MA), and music performance (MM). Any bachelor's degree at George Mason can lead to an accelerated master of arts (MA) in arts management. See cvpa.gmu.edu/academics/accelerated-programs for full details.

cvpa.gmu.edu ☎ 703-993-5572

DONALD G. COSTELLO COLLEGE OF BUSINESS

The Donald G. Costello College of Business is ranked in the top 10 percent of the nation's undergraduate business schools and offers a bachelor of science degree in business with innovative concentrations. The Costello College of Business also offers several options for a minor in business for both business and nonbusiness majors, as well as an undergraduate certificate program in accounting. In addition, all master's programs have a bachelor's to accelerated master's degree pathway, which provides any George Mason undergraduate the opportunity to further their education with graduate business coursework applicable to both their current bachelor's degree and a business master's program.

The Costello College of Business programs are designed to prepare graduates for work in a rapidly changing and competitive marketplace with local, regional, and global companies. With George Mason's location in Northern Virginia and proximity to Washington, D.C., combined with the assistance of the Costello College of Business's own Career Services and Student Success and Academic Services staff, students are also afforded exceptional opportunities to gain practical experience and global engagement opportunities to complement their academic coursework.

ACADEMIC ADVISING

The Costello College of Business has a dynamic team of professional academic advisors available to help students navigate their undergraduate business degree.

CAREER SERVICES

A wide variety of career services are provided specifically for Costello College of Business students by a dedicated team of professionals who are prepared to help students through their career development process. Visit Enterprise Hall, call 703-993-2140, or email mycareer@gmu.edu for more information.

UNDERGRADUATE ACADEMIC CONCENTRATIONS

- Accounting
- Business Analytics
- Finance
- Financial Planning and Wealth Management
- Management
- Management Information Systems
- Marketing
- Operations and Supply Chain Management

UNDERGRADUATE CERTIFICATES

Accounting

ACCELERATED MASTER'S PROGRAMS

- Accounting, MS
- Business Administration, MBA
- Business Analytics, MS
- Finance, MS
- Management, MS
- Real Estate Development, MS

Learn more at business.gmu.edu/BAM

UNDERGRADUATE ACADEMIC MINORS

- Business (for nonbusiness majors only)
- Business Analytics
- Energy Transition Management
- Entrepreneurship
- Finance
- Government Contracting
- International Business
- Management Information Systems
- Marketing
- Operations and Supply Chain Management
- Organizational Conflict Resolution
- Real Estate Development
- Wine and Craft Beverage Management

📍 Enterprise Hall, Room 008 ✉ masonbus@gmu.edu
🏠 business.gmu.edu 📞 703-993-1880

SCHAR SCHOOL OF POLICY AND GOVERNMENT

At the Schar School of Policy and Government, future leaders learn to tackle real-world problems from prominent and dedicated faculty members, many of whom are active practitioners in government and politics in Washington, D.C. Whether you take a diplomacy course with a retired ambassador, study money markets and economic policy with a Pulitzer Prize-winning *Washington Post* columnist, or study abroad to learn about oil politics in the Middle East with an expert from a nongovernmental organization, you will learn from and study alongside the very best.

OPPORTUNITIES TO BUILD EXPERTISE

In and out of the classroom, you can cultivate your connections and take your academic experience to the next level through experiential learning opportunities:

- Internships on Capitol Hill and with law firms, nonprofits, and federal agencies
- Undergraduate Research Assistant Program
- Patriot Pre-Law Program
- Global Politics Fellows
- Peace Corps Prep Program
- Faculty-led Learning Communities (LCs)
- Short-term study abroad programs

ACADEMIC MAJORS

GOVERNMENT AND INTERNATIONAL POLITICS, BA

With this traditional political science program, students learn to critically examine political issues, prominent actors, and processes in government, foreign policy, and international affairs. As governments and politics around the world respond to the rapid advancement of technology, this degree program equips students to face new challenges boldly and effectively.

INTERNATIONAL SECURITY AND LAW, BA

Traditional and nontraditional security threats affect the lives of millions around the globe every day. This dynamic program combines national and international security and law and is designed to help students understand how to most effectively respond to these threats—from weather disasters to cyberattacks to nuclear proliferation and more.

PUBLIC ADMINISTRATION, BS

Students in this program gain the analytical and decision-making skills to design, manage, and implement policies and programs that address complex challenges facing communities locally and around the world. Majors graduate with a firm understanding of what it means to effectively manage a public or nonprofit organization and with the skills that are in such high demand in government positions.

ACADEMIC MINORS

- American Government
- Global Systems
- Government Analytics
- International and Comparative Studies
- International Security
- Legal Studies
- Lobbying and Advocacy
- Political Communication
- Political Philosophy
- Public Policy and Management

ACCELERATED MASTER'S PROGRAMS

- Biodefense, MS
- Global Commerce and Policy, MA
- International Security, MA
- Organization Development and Knowledge Management, MS
- Political Science, MA
- Public Administration, MPA
- Public Policy, MPP

🏠 schar.gmu.edu 📞 703-993-1400
📍 Aquia Building, Room 337



SCHOOL OF INTEGRATIVE STUDIES

Connecting the classroom to the world! School of Integrative Studies students address contemporary social and environmental challenges. Based in the College of Humanities and Social Sciences, the school offers small, seminar-style classes that emphasize critical and creative thinking, effective communication, and diversity in thought. Students connect academic interests with hands-on learning to prepare for a life and career with meaning and impact. The school prepares graduates to assume leadership roles in the fields of business, law, government, health care, education, and the nonprofit sector, among others.

Academic Majors

HUMAN DEVELOPMENT AND FAMILY SCIENCE, BA

INDIVIDUALIZED STUDY, BIS

Concentrations

- Individualized
- Early Childhood Education Studies

INTEGRATIVE STUDIES, BS OR BA

Concentrations

- African and African American Studies, BA
- Childhood Studies, BA
- Education Studies, BA
- Individualized Study, BA or BS
(consult an advisor)
- Integrated Conservation, BS

Emphasis Areas

- Biodiversity, Conservation, Biodiversity and Society, Endangered Species Conservation, Wildlife Ecology and Conservation, and Collaborative Leadership
- Leadership and Organizational Development, BA
- Legal Studies, BA
- Life Sciences, BS

Emphasis Areas

- Pre-Dentistry, Pre-Medicine, Pre-Occupational Therapy, Pre-Optometry, Pre-Pharmacy, Pre-Physical Therapy, Pre-Physician's Assistant, Pre-Veterinary
- Social Justice and Human Rights, BA
- Social Science for Education, BA
- Women and Gender Studies, BA

ENVIRONMENTAL AND SUSTAINABILITY STUDIES, BA

Concentrations

- Business and Sustainability
- Climate Change and Society
- Conservation and Sustainability
- Environmental Policy
- Equity and Environmental Justice
- Sustainable Food and Agriculture

ACADEMIC MINORS

- Childhood Studies
- Human Development and Family Science
- Leadership
- Nonprofit Studies
- Social Justice and Human Rights
- Well-Being

 integrative.gmu.edu

JIMMY AND ROSALYNN CARTER SCHOOL FOR PEACE AND CONFLICT RESOLUTION

Challenges are everywhere: polarized social and political issues, disputes within families and workplaces, limited resources, and complex issues of violence, inequality, and justice. Internationally recognized in the field of peace and conflict studies, we prepare you to understand and creatively address these real-world problems.

As a bachelor's student, you'll be able to choose one of seven multidisciplinary concentrations, selecting courses from across George Mason to tailor your degree to match your personal and professional goals. Additionally, our interdisciplinary faculty are committed to moving the educational experience beyond the classroom. We prioritize hands-on opportunities, offering experiential learning that helps students build the skills and professional insight needed for meaningful, purpose-driven careers. Our alumni are leaders and innovators working in academia, government agencies, international peace-building organizations, and the private sector.

BE PREPARED, MAKE A DIFFERENCE

- The No. 1 public university for peace and conflict resolution studies in the United States
- The chance to develop in-demand job skills with 100 percent of students completing field experience
- International learning experiences, with more than 50 percent of students studying abroad
- Small class sizes and a close-knit community
- Alumni who are leaders and innovators in management, peacebuilding, education, development, human resources, nonprofit organizations, and mediation
- Exceptional student support that is consistently recognized for excellence in advising and student services

DEGREE PROGRAMS

Bachelor of Arts, Bachelor of Science, Accelerated Master's

ACADEMIC MINORS

Conflict Analysis and Resolution
Conflict Resolution Education
Genocide Prevention
Organizational Conflict Resolution
Peace Engineering
Sport and Conflict Resolution

CONCENTRATIONS

Building Peace in Divided Societies—Learn how societies with a history of conflict seek to transform relationships, violence, and injustice

Collaborative Leadership—Build skills for improving the capacity of leaders to work with conflict and manage change

Environmental Conflict and Collaboration—Examine how communities are dealing with environmental issues, and develop skills to promote collaborative solutions

Global Engagement—Study the dynamics of global conflict resolution and its impact on international relations

Interpersonal Dynamics—Develop knowledge and skills for transforming conflict in relationships, families, and organizations

Justice and Reconciliation—Focus on relationships between human rights, justice, and conflict resolution

Political and Social Action—Examine ways people organize to effect change in their societies

🏠 carterschool.gmu.edu 📞 703-993-4165
✉️ ugradcar@gmu.edu



COLLEGE OF ENGINEERING AND COMPUTING

The College of Engineering and Computing offers degrees in many of today's most rewarding and challenging fields. Students explore the frontiers of technology, gain valuable work experience, and make professional contacts while earning their degrees. After graduation, alumni have many choices, including pursuing advanced graduate programs, heading straight to work for some of the area's high-tech companies, or starting their own businesses.

UNDERGRADUATE MAJORS

Applied Computer Science, BS

Concentrations: Artificial Intelligence, Bioinformatics, Business Management, Business Marketing, Computer Game Design, Geoinformatics, Intelligence Analysis and Chinese Studies, Intelligence Analysis and Korean Studies, Intelligence Analysis and Middle Eastern Studies, Intelligence Analysis and Russian Studies, Linguistics, Mechanical Engineering, Software Engineering, Technology Policy

Bioengineering, BS

Concentrations: Bioengineering Healthcare Informatics, Bioengineering Pre-Health, Biomaterials and Nanomedicine, Biomedical Imaging and Devices, Computational Biomedical Engineering, Neurotechnology and Computational Neuroscience

Civil and Infrastructure Engineering, BS

Specialty areas: Construction Engineering, Environmental Engineering, Geotechnical Engineering, Structural Engineering, Transportation Engineering, Water Resources Engineering

Computer Engineering, BS

Optional Concentrations: Computer Networks, Embedded Systems, Hardware and System Security, Internet of Things, Controls and Robotics, Power and Energy Systems, Space-Based Systems, Semiconductor Engineering

Computer Science, BS

Cyber Security Engineering, BS

Electrical Engineering, BS

Optional Concentrations: Controls and Robotics, Communications and Signal Processing, Embedded Systems, Internet of Things, Power and Energy Systems, Space-Based Systems, Sustainable Data Center Engineering, Semiconductor Engineering

Information Technology, BS

Concentrations: Software Solutions, Cyber Security, AI Driven Solutions, Computing Platforms and Infrastructure

Mechanical Engineering, BS

Optional Concentrations: Aerospace Engineering, Engineering Mechanics, Microfabrication, Robotics, Specialized Facilities

Statistics, BS

Concentrations: Applied Statistics, Mathematical Statistics, Sports Analytics, Statistical Analytics

Systems and Industrial Engineering, BS

Technical Emphasis Areas: Artificial Intelligence for Systems and Industrial Engineers; Aviation Systems; Bioengineering; Climate Change, Energy, and Sustainability; Computer Network Systems; Cyber Security Engineering; Data Analytics and Operations Research; Electrical Engineering; Environmental Engineering; Financial Engineering; Mechanical Engineering; Software-Intensive Systems

UNDERGRADUATE MINORS

Aviation Flight Training and Management Minor

Bioengineering Minor

Computer Science Minor

Data Analysis Minor

Digital Media and Web Design Minor

Electrical and Computer Engineering Minor

Engineering Management, Leadership, and Innovation Minor

Environmental Engineering Minor

Information Technology Minor

Mechanical Engineering Minor

Peace Engineering Minor

Software Engineering Minor

Statistics Minor

STEM in Society Minor

Sustainable Systems Engineering Minor

Systems and Industrial Engineering Minor

BACHELORS TO ACCELERATED MASTERS (BAM)

🏠 cec.gmu.edu/academics/graduate-programs/accelerated-masters-programs

📍 Nguyen Engineering Building, Room 2500

☎ 703-993-1511 🏠 cec.gmu.edu

✉ cecugrad@gmu.edu

ACADEMIC MINORS

College of Education and Human Development

American Sign Language
Assistive Technology
Coaching
Early Childhood Education
for Diverse Learners
Educational Psychology
Esports Management
Event Technical Production
Hospitality Management
Kinesiology
Mild Disabilities
Personal Health and Wellness
Recreation Management
Severe Disabilities
Sport and American Culture
Sport and Computer Game
Design
Sport and Conflict Resolution
Sport Communication
Sport Management
Sports Analytics
Tourism and Events
Management
Visual Impairment and Blindness
Wine and Craft Beverage
Management

College of Engineering and Computing

Aviation Flight Training
and Management
Computer Science
Data Analysis
Environmental Engineering
Information Technology
Peace Engineering
Mechanical Engineering
Software Engineering
Statistics
Sustainable Systems
Engineering
Systems Engineering

College of Humanities and Social Sciences

African and African American
Studies
Ancient History and Mediterranean Archaeology
Anthropology
Arabic
Art History
Asia-Pacific and Northeast Asian
Studies
Brain, Body, and Behavior
Childhood Studies
Chinese
Classical Studies
Clinical Psychology
Communication
Community and Public Writing
Conservation Studies
Criminology, Law and Society
Design Thinking
Developmental Psychology
Digital Humanities
Digital Media and Web Design
Dynamic Publishing
Economics
English
Ethics and AI
Folklore and Mythology
Forensic Psychology
French
German Studies
Global Affairs
Health, Disease, and Culture
Health Communication
Health Psychology
History
Human Development and
Family Science
Immigration Studies
Industrial/Organizational
Psychology
Intelligence Studies
Islamic Studies
Italian Studies
Japanese Studies

Journalism
Judaic Studies
Korean Studies
Latin American Studies
Latin
Leadership
LGBTQ Studies
Linguistics
Medieval Studies
Middle East Studies
Museum Studies
Native American and Indigenous
Studies
Nonprofit Studies
Philosophy
Philosophy and Law
Philosophy for Social Change
Photojournalism
Political Communication
Political Philosophy
Professional and Technical
Writing
Professional Experience in
Communication
Psychology
Religious Studies
Russian
Screen Cultures
Social Justice and Human Rights
Sociology
Spanish
Sport and American Culture
Sport Communication
STEM in Society
Sustainability Studies
Teaching English as a Second
Language
Well-Being
Women and Gender Studies

ACADEMIC MINORS

College of Public Health

Aging Studies
Food Systems
Global Health
Health and Social Policy
Health Information Technology
Nutrition
Public Health
Senior Housing Administration
Social Work

College of Science

Astronomy
Astrophysics
Atmospheric Science
Bioinformatics
Biology
Chemistry
Computational and Data Sciences
Conservation Biology
Conservation Studies
Earth Science
Environmental Consulting
Environmental Policy
Environmental Science
Forensic Science
Geographic Information Systems
Geography
Geology
Government Analytics
Mathematics
Mathematics for Costello College of Business Students
Neuroscience
Ocean and Estuarine Science
Paleontology
Physics
Renewable Energy
Interdisciplinary
Science and Technology Policy
Scientific Leadership and Practice
STEM in Society
Sustainability Studies
Sustainable Enterprise
Urban Informatics

College of Visual and Performing Arts

Animation
Arts and Social Change
Arts Management
Audio Production
Computer Game Design
Dance Appreciation
Design and Technical Theater
Digital Media and Web Design
Dynamic Publishing
Ethnomusicology
Event Technical Production
Film and Video Studies
Global Dance
Graphic Design
Illustration
Jazz Studies
Music for Well-Being
Music
Music Composition
Music Pedagogy
Music Technology
Photography
Photojournalism
Sport and Computer Game Design
Studio Art
Theater
Theater Performance
Web Design

Jimmy and Rosalynn Carter School for Peace and Conflict Resolution

Conflict Analysis and Resolution
Conflict Resolution Education
Organizational Conflict Resolution
Peace Engineering
Sport and Conflict Resolution

Schar School of Policy and Government

American Government
Global Systems
International Security
International/Comparative Studies
Legal Studies
Political Philosophy
Public Policy and Management
Urban and Suburban Studies

Donald G. Costello College of Business

Business Analytics
Business
Energy Transition Management
Entrepreneurship
Finance
Globally Responsible Business Practices
Government Contracting
International Business
Management Information Systems
Marketing
Operations and Supply Chain Management
Organizational Conflict Resolution
Real Estate Development
Wine and Craft Beverage Management



Academic Essentials





MASON CORE

What is the Mason Core?

Mason Core is George Mason's general education program that provides your pathway to success by helping you develop skills, knowledge, and perspectives that prepare you for your career and for life beyond college. It is a set of required courses that form the foundation of your degree, giving you a broad liberal arts education to complement the depth of your major or minor.

The skills you develop in Mason Core courses support success in every major and career. Employers expect graduates to write and speak clearly, think critically, and solve problems creatively. You'll practice these skills across your Mason Core experience. If you're still deciding on a major, these courses can help you explore options while building habits of thinking that last a lifetime.

How do you complete Mason Core?

You'll start with Foundation courses in your first year to strengthen key academic skills. Then, Exploration courses broaden your perspective across different fields. Finally, Integration courses bring everything together, connecting what you've learned in Mason Core and your major through advanced writing and culminating experiences. Your academic advisor will help you choose the right courses, so meet with them regularly to stay on track.

For more information about all Mason Core options, courses, and credits, visit the University Catalog at catalog.gmu.edu.

Foundation Requirements

Foundation courses build essential skills you'll use in any major and career—writing, speaking, working with numbers, and navigating technology. These classes give you the tools to communicate effectively, think critically, and solve problems in today's world.

WRITTEN COMMUNICATION (LOWER-LEVEL) (3 CREDITS)

Start your writing journey with ENGH 101 (or equivalent), the first step in a three-course writing sequence unique to George Mason. This course helps you use writing as a way to think, discover ideas, and express meaning. You'll practice responding to different writing situations and genres and learn how to engage a variety of audiences.

ORAL COMMUNICATION (3 CREDITS)

The Oral Communication course (COMM 101) teaches you to create and deliver messages, monitor your verbal and nonverbal communication, and adapt to diverse audiences in personal, professional, and intercultural contexts. You'll use speaking as a tool for learning and sharing ideas and use high quality evidence to support your points.

QUANTITATIVE REASONING (3 CREDITS)

These courses sharpen your critical thinking through math and statistics. You'll learn to interpret data, patterns, and relationships using formulas, graphs, and models. By applying the skills you develop in quantitative reasoning courses, you'll be ready to make informed decisions across all aspects of your life.

INFORMATION TECHNOLOGY AND COMPUTING (3 CREDITS)

These courses teach you how technology systems work, how to use online resources effectively, and how to protect your data and devices. You'll explore the latest tools and learn to be a smart, responsible technology user.

Exploration Requirements

Exploration requirements give you the chance to step outside your comfort zone and experience new subjects and ways of thinking. These classes help you connect ideas across different fields, tackle new challenges, and prepare for the complexity of today's world. By exploring a variety of perspectives, you'll build the skills to synthesize knowledge and adapt to whatever comes your way.

When choosing your Exploration courses, you may want to look for the Just Societies (JS) flag. These specially designed classes help you connect with people from diverse backgrounds and engage with key ideas shaping today's world, while providing you with additional skills that you will use during your time at George Mason and beyond. Talk to your advisor or look in the catalog to find Just Societies courses marked with JS.

ARTS (3 CREDITS)

Arts courses help you explore creativity and expression, understanding how art is made and why it matters. You'll learn how artistic ideas take shape, how art reflects culture and history, and how to express yourself through the creative process.

GLOBAL CONTEXTS (3 CREDITS)

Global Contexts courses help you analyze how people, cultures, and systems are connected across the world. You'll explore global issues through the lens of a discipline you select and learn how cooperation and inequality shape our shared future.

GLOBAL HISTORY (3 CREDITS)

Global History (HIST 125) helps you see how your story fits into the bigger picture. By exploring diverse historical experiences, you'll investigate how families, communities, and cultures have shaped and been shaped by global events from the pre-modern era to today. You'll learn how people, goods, ideas, and even diseases have moved across the world, creating the interconnections that define our shared history and giving you a long-term perspective on issues that still matter today.

LITERATURE (3 CREDITS)

Literature courses teach you how to read deeply and think critically. You'll explore how writers use language and literary techniques to shape meaning, and how texts reflect the social, political, and cultural contexts in which they were written. These courses also help you develop strong analytical and writing skills by evaluating ideas and arguments in your classmates' writing and in your own work as well.

NATURAL SCIENCE (7 CREDITS)

Natural Science courses spark curiosity and help you understand scientific concepts so you can apply them to real-life decisions, whether personal, professional, or societal. At least one course will include a hands-on lab experience, giving you the chance to test ideas and see science in action.

SOCIAL AND BEHAVIORAL SCIENCES (3 CREDITS)

In these courses, you'll explore how individuals, groups, and institutions are shaped by social and cultural factors, and how these influences change over time. Using concepts and methods from the social and behavioral sciences, you'll analyze important human issues from the past and in the present using the language and tools of the field.

Integration Requirements

Integration courses are the culmination of your George Mason experience. They help you pull together everything you've learned through Mason Core and your major and apply it in meaningful ways. These classes refine your communication, critical thinking, and problem-solving skills, so you're ready for your career, engaged citizenship, and lifelong learning.

WRITTEN COMMUNICATION (UPPER-LEVEL) (3 CREDITS)

The second course in Mason Core's writing sequence, ENGH 302, builds on your first-year writing course with advanced research, analysis, and writing. You'll tackle challenging questions in your discipline and learn to communicate effectively in academic and professional contexts.

WRITING-INTENSIVE COURSE (3 CREDITS)

This final course in the writing sequence is taught in your major, helping you master writing for your discipline. You will use writing to explore ideas, refine your thinking, and share discoveries with different audiences, while receiving guidance and feedback from your instructor.

MASON APEX (3 CREDITS)

Mason Apex courses challenge you to draw connections across your entire undergraduate experience. Through projects, research, or applied learning, you will demonstrate your ability to think critically, solve problems, and communicate your knowledge in ways that matter.

 masoncore.gmu.edu



ACADEMIC PLANNING WORKSHEET

Name: _____ G-number: _____

To enhance your academic advising experience during Orientation, please take the time to review the George Mason advising information in this handbook as well as online. Additionally, please complete this planning form to facilitate the exchange of information with your academic advisor.

STEP 1: Please tell us what major you are enrolled in or, if undecided, what major(s) you may be thinking about.

STEP 2: Review your academic transcript and let us know if there is any missing coursework (last semester classes, AP/IB, or other exams or courses):

| TYPE OF CREDIT | AP/IB/CLEP OR COURSE | SCORE/ GRADE | SCHOOL NAME | GEORGE MASON EQUIVALENT |
|---------------------|----------------------|--------------|-------------|-------------------------|
| AP/IB/CLEP/Transfer | | | | |
| AP/IB/CLEP/Transfer | | | | |
| AP/IB/CLEP/Transfer | | | | |
| AP/IB/CLEP/Transfer | | | | |
| AP/IB/CLEP/Transfer | | | | |

MASON CORE is the university's general education program. It is a set of required courses that help you build essential skills for college and beyond. About one-third of your credits will come from Mason Core, and these classes cover everything from writing, math, oral communication, and technology to the arts, sciences, social sciences, and more. While the categories stay the same for all students, you get to choose courses that interest you from an approved list. Additionally, these requirements may be met via transfer, AP, or IB credits. Many majors will have lower-level requirements specific to the degree that may also meet a Mason Core area requirement. For more specific information about Mason Core, please search "Mason Core" in the *University Catalog* and/or review the Mason Core pages in your orientation handbook.

MAJOR REQUIREMENTS: All majors have a set of required courses that are specific to that program. These courses range from lower-level courses appropriate for freshmen and sophomores to upper-level courses that are geared toward juniors and seniors. Some courses have prerequisites, which are a specific course or courses that must be taken first. Additionally, some major requirements may also meet a Mason Core requirement.

COLLEGE OR SCHOOL REQUIREMENT: Certain colleges have a set of requirements that are unique to their majors. For instance, the College of Humanities and Social Sciences requires all their students completing a bachelor of arts degree to meet intermediate proficiency in a foreign language. These students are also asked to complete an additional social science course beyond the one needed to fulfill the Mason Core, a philosophy or religious studies course, and a non-Western culture course. Please check with your advisor to make sure that you meet the requirements specific to your college.

ELECTIVES: These are credits that don't meet a specific requirement, such as a Mason Core, major, or college requirement. They are credits that go toward those necessary to complete the minimum number of credits needed to graduate, typically 120, and may be lower- or upper-level credits. This could be individual courses or those courses going toward a minor. It is all dependent upon your degree. Check with your advisor.



| MASON CORE | SATISFIED | 1ST CHOICE | 2ND CHOICE |
|--------------------------------------|-----------|------------|------------|
| Written Communication | | | |
| Oral Communication | | | |
| Quantitative Reasoning | | | |
| Information Technology and Computing | | | |
| Arts | | | |
| Global Contexts | | | |
| Global History | | | |
| Literature | | | |
| Natural Science Lab | | | |
| Natural Science (lab or not) | | | |
| Social and Behavioral Science | | | |

STEP 3: Review your academic transcript and place an “X” in the satisfied column for any requirement(s) that you have met via AP, IB, or transfer credit. Once those requirements have been identified, review and select courses for your remaining Mason Core. Please identify more than one course for each area in the event you need an option beyond your first choice.

STEP 4: Review course descriptions and identify preferred courses in the spaces below. For minimum full-time status (12 credits) you will need approximately four classes. Your schedule should be a mix of Mason Core, major and/or college requirements, and exploration courses or electives.

| | |
|--|--|
| | |
| | |
| | |

OFFICE OF THE UNIVERSITY REGISTRAR

Detailed information regarding the steps to registration and waitlisting can be found at registrar.gmu.edu. Before registering via Patriot Web (patriotweb.gmu.edu), you will need to have accessed your Patriot Pass account and obtained a George Mason username and secure password. If you have not yet done so, visit password.gmu.edu.

What Can You Do Online?

The Office of the University Registrar website contains useful tools to assist you through the course registration process.

- **View the Academic Calendar** for specific **registration activities and dates** including the last day to add and drop a course at registrar.gmu.edu/calendars.
- **View the University Catalog** for specific university information on academic policies, tuition and fees, course offerings, and admissions and graduation requirements at catalog.gmu.edu.
- **View your time ticket** for registration on Patriot Web. Select "Student Services," "Registration," "Registration and Planning," select a term, and then scroll down to view your time ticket.
- **Order an official transcript** at registrar.gmu.edu/students/transcripts.
- **Order an Enrollment Verification:**
 1. Log in to Patriot Web.
 2. Select Student Services.
 3. Select Student Profile.
 4. Select Order Enrollment Verification.
 5. If this is your first time logging on to Myhub, you will be required to create an account and set up Multifactor Authentication.
Continue as follows:
 - a. Log in to Myhub Service.
 - b. Follow subsequent prompts to receive an authentication code.
 - c. Enter the code and click on Verify.
 6. Once you are logged on to Myhub, a variety of options will be displayed:
 - a. Scroll down and select the Self-Service box on the lower right side.
 - b. Below the Download an Enrollment Certificate title select George Mason University from the Select a School drop-down, then select a certificate:
 - i. All Enrollment Certificates
 - ii. Current Enrollment Certificates
 - iii. Advanced Registration Certificate
 7. Once selected, click on the Download Certificate button to receive your certificate.

- **View your holds on Patriot Web.** Click "Student Services," "Student Records," and then "View Holds."
- **View common registration error messages** at registrar.gmu.edu/topics/common-registration-error-messages.
- **Learn about in-state tuition eligibility** and request a tuition reclassification at registrar.gmu.edu/students/domicile.
- **Submit the Veterans Registration Reporting Form (VRRF)** each semester to have classes certified for veteran education benefits.
- The Office of the University Registrar has many forms online. Visit registrar.gmu.edu/forms for a full list of all available forms.
- **View Patriot Web tutorials** at go.gmu.edu/patriot-web-tutorials to learn how to navigate Patriot Web and register for classes.

Full-Time Student Classification

Full-time undergraduate students are classified as those students enrolled in 12 or more credits per semester. Completed hours are defined as a combination of all credits earned at the university plus credits transferred from other institutions or obtained by testing. Please note that different criteria for full-time status may apply for tuition, verification, and financial aid purposes.

| CLASS CODE | COMPLETED CREDIT HOURS |
|------------|------------------------|
| Freshman | 0-29 |
| Sophomore | 30-59 |
| Junior | 60-89 |
| Senior | 90 or more |

Graduation Information

DEGREE EVALUATION

George Mason's degree evaluation system tracks your progress toward degree completion. Detailed information regarding the steps to access and understand your degree evaluation can be found at registrar.gmu.edu/students/degree-evaluation.

Questions about your degree evaluation should be directed to your academic advisor.

MASON ONLINE

Did you know that any George Mason student can take an online course? It's true! If you're currently a George Mason University student, then you can take online courses. There is no separate application process. Registration and financial aid work in the exact same way for your online and face-to-face courses. The instructors who teach online are the same instructors who teach face-to-face.

Whether you work, intern, commute, or live on campus, online courses offer an active and collaborative learning environment while allowing for greater flexibility in your academic schedule. For a full list of available online courses, visit masononline.gmu.edu/courses.

To find out what technologies you will need and how to get started with online courses, visit masononline.gmu.edu/online-learning-basics.

Online Learning Terminology

DELIVERY MODE

What percentage of the course is delivered online?

- **Hybrid online:** 51 to 99 percent of scheduled class time is online. The remaining class time is face-to-face.
- **Fully online:** 100 percent of scheduled class time is online. Orientations, tests, exams, or labs may be face-to-face.

INTERACTION MODE

When do the instructor and students interact?

- **Synchronous:** Same time, different locations. All students join the instructor for scheduled online class meetings using teleconferencing tools like Blackboard Collaborate.
- **Asynchronous:** Different times, different locations. All class instruction is available online with no set class meetings. Students still follow an established schedule of due dates.

Earn a Degree Online

George Mason currently offers more than 60 fully online and hybrid undergraduate and graduate programs! Online degree options include (but are not limited to)

UNDERGRADUATE

Applied Science, Cybersecurity Concentration, BAS
Applied Science, Health, Wellness, and Social Services Concentration, BAS
Applied Science, Technology and Innovation Concentration, BAS
Business, BS
Computer Game Design, BFA
Global Affairs, BA
Health Administration, BS
Information Technology, BS
International Law and Security, BS
Psychology, BS

GRADUATE

Accounting, MS
Applied Industrial and Organizational Psychology, MPS
Applied Information Technology, MS
Biodefense, MS
Bioinformatics and Computational Biology, MS
Business Administration, MBA
Conflict Analysis and Resolution, MS
Curriculum and Instruction, MEd
Data Analytics Engineering, MS
Economics, MA
Education Leadership, MEd
Family Nurse Practitioner Program, MSN
Health Informatics, MS
Health Systems Management, MHA
Learning Design and Technology, MS
Social Work, MSW
Special Education, MEd
Systems Engineering, MS
Teaching English as a Second Language (Curriculum and Instruction, MEd)

Visit masononline.gmu.edu/programs for a full list of online programs.

CONTACT US

✉ online@gmu.edu 🏠 masononline.gmu.edu



ACADEMIC ADVISING AT GEORGE MASON

Vision

Academic advising at George Mason University is an integral part of the educational process that enhances student learning and development by supporting, teaching, and connecting students to curricular and cocurricular experiences relevant to becoming an exemplary George Mason graduate: an engaged, reflective citizen and well-rounded scholar who is prepared to act.

Mission

The academic advising community at George Mason University commits to creating ongoing, personal, and purposeful educational partnerships with students and colleagues. Advisors contribute to student success by providing resources and by teaching students to develop the skills required to become lifelong learners capable of effective self-advocacy.

Advisor Responsibilities

- Support students in setting and reaching educational goals.
- Teach students to engage in a process of self-reflection and self-discovery, guiding them to find degree pathways that match their interests, skills, and abilities.
- Clearly and accurately communicate academic requirements and policies.

- Connect students to campus resources and co-curricular opportunities to integrate learning and experience.

Student Responsibilities

- Be responsible for understanding and reviewing academic and degree policies, regulations, and procedures.
- Use the Mason Degree Audit to track your degree progress (registrar.gmu.edu/degreeaudit).
- Meet with an academic advisor each semester to discuss academic, educational, and career goals. Use Patriot Connect (connect.gmu.edu) to schedule appointments with your academic advisor.
- Be responsible for knowing how to find important institutional and college policies.

Contact your academic advisor if you need additional assistance.

Advising at George Mason is unique to each department. Students should contact their department to identify how advising is handled for their major. You may search for more information about advising and identify your academic advisor at advising.gmu.edu.



GEORGE MASON ADVISING TIMELINE

Before Classes Begin



Familiarize yourself with the academic deadlines and calendar. Scan here to find the Academic Calendars.

- Confirm payment of your George Mason account or establish a payment plan if necessary (A deadline exists and missing it could lead to the prevention/delay of future registration and late fees).
- Review degree and major requirements.
- Identify advisor contact information and reach out to address any questions.
- Identify your financial aid counselor, if applicable.
- Schedule math and foreign language placement testing if required.
- Submit final transcripts, vaccination records, and any other remaining documents. Transfer students who do not submit all prior college transcripts by the middle of their first semester at George Mason will have a hold placed on their account preventing them from registering for second semester classes.

First Month

- Meet with an advisor if you have questions or are experiencing any challenges.
- Attend Welcome Week events (connect with your major and students with similar interests).
- Familiarize yourself with academic policies (i.e., selective withdrawal, dropping courses, etc.).
- Familiarize yourself with academic support resources and opportunities (Learning Services, the Writing Center, math tutoring).
- Review all course syllabi for detailed and specific information. Also, identify instructors' contact hours. Notify them of any conflict with your schedule so that, if necessary, alternate arrangements can be made.
- Review your academic transcript for any previous coursework. If not posted by the end of the first month, please contact an advisor, complete the Transfer Credit Inquiry Form via bit.ly/TransferCreditInquiryForm, and submit it to credeval@gmu.edu.
- Get involved and connected on campus.



Second Month

- See your advisor to discuss the current semester and begin planning for the next. Some advisors require appointments, others have walk-in advising, and some have a mix of both. Please know what your advisor or department requires so you can plan accordingly.
- Identify the selective withdrawal deadline.
- Review midterm grades (middle to end of month).
- Attend the George Mason Career Fair.
- Take math or language placement tests if required, but not completed.

Third Month

- Follow up with your advisor to clarify requirements, registration questions, or academic difficulty.
- Create an academic plan that outlines all your required classes until you graduate. If you need help, search 4-Year Graduation Plans. Review it with your advisor.
- Review your next semester registration time ticket.
- Talk with your advisor about courses elsewhere if thinking about studying at another institution during the summer/winter. This action requires advance approval with specific deadlines.
- Address any holds on your account that may prevent registration.
- Register for classes as soon as your time ticket allows.

Fourth Month

- Review the final exam schedule and discuss any conflicts with your instructor immediately.
- Discuss any academic concerns with your advisor and make sure you are registered for next semester.
- Prepare for and take your finals.

After Finals/End of Semester

- Review all your grades and contact/email instructors immediately with any questions or concerns.
- Review next semester's registration and verify eligibility for courses based on any prerequisites that may not have been met.
- Review your academic standing and contact your advisor with any questions.
- Review next semester's academic calendar.

Search the following terms on [gmu.edu](https://www.gmu.edu) for more information:

- Academic Advising
- Majors @ Mason
- *University Catalog*
- Mason Core
- University Career Services
- GetConnected
- Four-Year Graduation Plans
- Learning Services
- Math tutoring
- Writing Center
- Counseling and Psychological Services
- Student Health Services
- Patriot Web
- Math placement test
- Foreign language placement test
- Patriot Connect

PLACEMENT TESTING

Foreign Language

If you are pursuing a bachelor of arts degree in the College of Humanities and Social Sciences or the College of Science, you must prove intermediate proficiency in a foreign language. Some programs within the College of Visual and Performing Arts also have a language requirement. This requirement may be fulfilled by

- completing an intermediate 202 language course at George Mason or the equivalent at another college or university,
- earning a qualifying score on one of the tests listed at admissions.gmu.edu/exams, or
- taking the foreign language placement test offered by the Department of Modern and Classical Languages.

For more information on testing, visit mcl.gmu.edu/placement-testing or call 703-993-1220.

The Department of Modern and Classical Languages offers language placement tests in Arabic, Chinese, French, German, Korean, Latin, Russian, and Spanish during Orientation. Students interested in Italian and Japanese testing need to contact the MCL Department directly to make testing reservations. It is recommended that students with two or more years of experience with a foreign language take the corresponding placement test. Students with less than two years or no experience do not need to take the placement test and should instead enroll in a 110 or 115 language course. Students should take less than one hour to complete testing. All students should arrive with their photo identification and George Mason G number.

English

The English 101 Exam is a three-hour online optional skills assessment essay exam. Any admitted student who has not transferred equivalent credit from another university or has not taken ENGH 101 is eligible to take the exam. If you receive a pass, you will not be awarded credits but you will meet your ENGH 101 requirement. If you receive a no-pass, you will not be able to retake the exam and will be required to complete the course. Summer exam (given between May 1 and August 22) results will not be available until after the exam closing date and before the drop deadline for fall. There is no cost to take the exam and registration is required. Contact Stacey Remick (sremicks@gmu.edu) for more information, or visit composition.gmu.edu/waivers/engh-101 for the schedule and registration process.

English 302 Exemption Portfolio and Exam Option

The English 302 exemption involves a two-part process. Students must schedule a meeting with Jennifer Janisch (jjanisch@gmu.edu) before submitting a portfolio. If your portfolio receives a pass, you are required to complete the exam. You must pass the exam to meet the ENGH 302 requirement. You will not be awarded credits, but you will meet the ENGH 302 requirement for graduation. Prerequisites for submitting a portfolio include a minimum 3.00 cumulative GPA and completion of at least 30 credits (transferred or completed). Additionally, you must have your ENGH 100-level and literature requirements completed or transferred in at the time of submission. There is no cost. Contact Stacey Remick (sremicks@gmu.edu) for more information. For portfolio requirements and information on the process, please visit composition.gmu.edu/waivers/waiver-of-english-302.

Math

Most George Mason students, regardless of major, will need to take at least one math course to graduate; however, the math course required varies from major to major. Each initial math course has a prerequisite and requires a particular score on the math placement test to enroll. Therefore, most students need to take the math placement test. If you are not taking a math course in the fall semester, you do not need to take the placement test during Orientation. The test is offered during Orientation as a courtesy, but it is given throughout the academic year, as well as during the summer. Math placement test scores are valid for one year and must be attained before registering for the desired math course. We encourage you to talk to your advisor about whether you need to take the math placement test, as well as when it would be best for you to take it.

For more information, please visit math.gmu.edu.

Reva and Sid Dewberry Family School of Music

The Reva and Sid Dewberry Family School of Music offers placement tests in theory, sight singing, ear training, and keyboard skills. These tests are optional for incoming freshman music majors but are required for incoming transfer students who plan to major in music. Prior notice to the School of Music is not necessary; you may simply show up and take the exams. These exams are only available the semester you enter George Mason and cannot be scheduled for a later time. Exams are typically offered in August on the last Saturday prior to the start of fall classes. For full information on placement test scheduling, please visit the School of Music website, select "Academics," and then select "Advising."



**IT
STARTS
WITH
YOU!**

PATRIOT SUCCESS

Whether you are a freshman or a senior, keeping track of how you are doing in your college career is important. Taking this survey helps you identify programs and opportunities that interest you, and lets the Patriot Success team know if you need some additional support.

For more information, visit PatriotSuccess.gmu.edu.



STUDENT INFORMATION PRIVACY (FERPA)

The Family Educational Rights and Privacy Act of 1974 (FERPA) is a federal law that protects the privacy of student education records and restricts how and when their education records can be disclosed. Education Records are records directly related to a student that are maintained by George Mason University, or a party acting on behalf of the university. For additional information about FERPA, including the Annual Notification of Rights under FERPA, please visit ferpa.gmu.edu.

What Families Need to Know

The best way for families to stay involved and informed about their student's progress is to keep open lines of communication with their student. When a student attends a postsecondary institution such as George Mason, educational records belong to the student and not the parent or family member. This means George Mason students control access to all of their educational records and must provide written consent if parts of an educational record are to be disclosed to a third party, including parents or family members, unless the release is to the parent of a dependent student, as required by § 23.1-1303.B.5 of the Code of Virginia, or the disclosure meets a qualified exception under FERPA.

GRADES

George Mason does not mail grades to students or to families. Grades are available for students to view online through Patriot Web. Students can request an official transcript be sent to an address of their choice for a fee. Students may order their official transcript or print unofficial transcripts via Patriot Web.

ACADEMIC ADVISING

In accordance with the FERPA law, school officials can speak only to a student regarding their record. An exception can be made in the instance of a student who

wants to release portions of their educational record to a third party and has submitted a Consent to Release Student Information (FERPA Form). This form is available on the Office of the University Registrar's website at registrar.gmu.edu/forms. Be aware that consent remains in effect until revoked. To revoke a release, submit another Consent to Release Student Information (FERPA Form) and select "remove an existing release."

FINANCIAL AID AND STUDENT ACCOUNTS

The Offices of Student Accounts and Financial Aid will speak to students at any time regarding their account; however, if the student would like either office to speak to a parent or family member, the student is required to submit a Consent to Release Student Information (FERPA Form), located on the Office of the University Registrar's website, at registrar.gmu.edu/forms. Be aware that consent remains in effect until revoked. To revoke a release, submit another Consent to Release Student Information (FERPA Form) and select "remove an existing release."

STUDENT CONDUCT

Educational records affiliated with the Office of Student Conduct are covered by FERPA and require a separate Privacy Waiver to authorize the discussion of a particular case or situation to someone other than the student, such as a family member.

A Privacy Waiver can be filed only by a student once a conduct situation arises; waivers cannot be submitted preemptively. The Privacy Waiver expires at the end of the particular case or situation for which it was signed, or a date of the student's choosing. The waiver can be found at studentconduct.gmu.edu under the "Contact Us" tab.

The Office of the University Registrar can assist with FERPA-related questions. Contact ferpa@gmu.edu with questions or concerns.

ACADEMIC RECORDS FAQ

My transfer credits are not posted. What do I need to do?

The Office of Admissions evaluates transfer credit at the point students confirm their intent to enroll at George Mason. Once you have signed up for Orientation, you should be able to view your Transfer Credit Evaluation under Student Records on Patriot Web. If credits are missing from your record, please first make sure you have submitted your final transcript and allow seven business days after the transcript has been received. If, after that time, no credits are posted, please contact credeval@gmu.edu. Please note that during the busy periods, like January and the summer months, evaluations may take longer. If some, but not all, credits have been posted and it has been more than seven business days since your transcript or document was received by George Mason, please submit the Transfer Credit Inquiry Form to credeval@gmu.edu.

You can find the Transfer Credit Inquiry Form via bit.ly/TransferCreditInquiryForm.

How can I change my name in university records?

To change your name, you must access registrar.gmu.edu/forms and choose the "Change of Personal Information" form. There, you can request a change or update to your name, birth date, or social security number.

Can I get permission to take classes at another institution? What do I do after I have taken the class?

You should speak to your academic advisor for guidance before making a request for permission to enroll in a course at another institution. You will need to appeal to the academic dean's office of the course in which you wish to enroll in elsewhere. The Request for Permission to Study Elsewhere form can be found at registrar.gmu.edu/forms. If the request is approved, the Office of the University Registrar must receive the form before the course begins. On course completion, an official transcript should be sent from the transfer institution directly to the university via mail at George Mason University, Office of Admissions, 4400 University Drive, MS 3A4, Fairfax, VA 22030 or electronically to ugtrans@gmu.edu.

How do I order a copy of my transcript?

Please visit registrar.gmu.edu/records/transcripts for steps on ordering your official transcript.

How can I change my address in university records?

You may use Patriot Web to make any changes to your address. Visit patriotweb.gmu.edu and click on "Personal Information" and "Personal Profile" to make any needed updates to your address.

Why has my change of grade not been processed?

Please check your student email address for information regarding your case submission. If you have any additional questions regarding your request, please follow up with the instructor or the course department for additional assistance.

How can I get a copy of a class syllabus?

To obtain course syllabi, you will need to contact the academic department.

How can I get a copy of class descriptions from the previous year?

For recent academic years, this information can be found at catalog.gmu.edu. You can find this information for specific academic years by accessing catalog.gmu.edu/archives.

How do I receive credit for AP, IB, CLEP, or high school dual enrollment coursework?

If you are eligible for AP, CLEP, IB, or high school dual enrollment transfer credit, official transcripts should be provided to the Office of Admissions (see gmuedu/transfer/credits/process for instructions) during the application process. At gmuedu/freshman/requirements/exam-credit you can access a complete list of transfer credit by exam. We highly recommend that you finalize all your transfer credit within the first academic year of enrollment at George Mason.

TRANSFER CREDIT INFORMATION

Transfer Credit Evaluations for first-year students are available on Patriot Web within approximately 10 days after the student submits their enrollment deposit and for transfer students within 10 days after an admission decision notification has been sent. Students will receive an email with instructions on how to access their evaluation.

All transfer students are responsible for providing a complete and final transcript from each previous institution to the Office of Admissions. A FINAL transcript is defined as the transcript that includes ALL coursework, ALL grades, and ALL degrees awarded from your previous institution. Re-admitted students will receive a new transfer credit evaluation based upon current transfer credit policy. A previous transfer credit evaluation will not be applicable to the new catalog year. The university reserves the right to revise a transfer credit evaluation.

Things to Remember About Your Transfer Credit

- Transfer credit is granted only from institutions accredited by a **George Mason-recognized*** U.S. institutional accrediting agency or international equivalent with an earned grade of "C" or better.
- Developmental coursework does not transfer.
- Credits from institutions that operate on a quarter system calendar are transferred by multiplying the quarter hours by two-thirds in order to equal semester credits.

**You can find a list of George Mason-recognized U.S. institutional accrediting agencies here: gmu.edu/transfer/credits/accredited-universities.*

- Not all transfer credits will apply toward every major.
- If you are eligible for AP, CLEP, IB, or high school dual enrollment transfer credit, official transcripts should be sent directly from the organization, college, or university to George Mason's Office of Admissions at ugtrans@gmu.edu during the application process. A complete list of transfer credit by exam is located at gmu.edu/freshman/requirements/exam-credit.

Important Recommendations

- All new transfer students are responsible for meeting with their academic advisor to ensure that their final transfer credit evaluation is correct and that they understand the way their transfer credit applies toward their degree program. Students should also ensure that they know how to run and read their individual degree evaluation.
- If you are missing credit or have questions about your credit, contact credeval@gmu.edu.
- To see the list of current course equivalencies, go to the transfer equivalency matrix at gmu.edu/transfer/credits/credit-matrix.

Academic holds will be placed on all new transfer students who have not provided the required final transcript by the end of the add/drop deadline. An academic hold will prevent registration for the following semester.



TRANSFER CREDIT EVALUATION WORKSHEET

TRANSFER EQUIVALENCY WORKSHEET

Date: 11/2/23 3:32

George Mason University

Student: Patriot, Mason

G#####

Fall 2024

Undergraduate

College: Engineering and Computing

Major: Information Technology

Program: BS Information Technology

Mason Core Waiver: Lower-Level

1. ADVANCED PLACEMENT EXAMS

ATTENDANCE PERIOD

ATTENDANCE

EVALUATION

1 SP18

6/4/19

TRANSFER COURSES

GEORGE MASON EQUIVALENT

| COURSE | TITLE | CR.HRS | GRD | COURSE | TITLE | CR.HRS |
|-----------|--------------------------|--------|-----|----------|-------------------------------|--------|
| HIST UH 5 | AP United States History | 6 | 5 | HIST 122 | Development of Modern America | 3 |
| | | | | HIST 121 | Formatn of Amer Republic | |

2. COLLEGE ABC

Attendance Period

Attendance Dates

Eval. Date

Transfer Degree Awarded

1 FA19-SU22

08/19/19-
08/08/22

8/7/23

AS

Transfer Courses

George Mason Equivalent

| COURSE | TITLE | CR.HRS | GRD | COURSE | TITLE | CR.HRS |
|---------|-------------------------------|--------|-----|-----------|--------------------------------|--------|
| ITE 221 | PC Hardware & OS Architecture | 3 | | A | | |
| ITN 100 | Intro/Telecommunications | 3 | A | IT 105 | IT Architecture Fundamentals | 3 |
| | | | | IT ---- | IT Elective | 3 |
| ART 100 | Art Appreciation | 3 | A | ARTH 101 | Intro to Visual Arts | 3 |
| CST 110 | Intro to Communication | 3 | A | COMM 101 | Interperson and Group Interact | 3 |
| ECO 201 | Principles of Macroeconomics | 3 | B | ECON 104 | Macroeconomic Principles | 3 |
| HIS 111 | Hist of Wrld Civ I | 3 | A | HIST L387 | Topics in Global History | 3 |
| HIS 121 | U.S. History I | 3 | B | HIST 121 | Formatn of Amer Republic | 3 |
| ITE 115 | Intro Computer Appl/Concepts | 3 | B | IT 103 | Intro to Computing | 3 |
| MTH 261 | Applied Calculus I | 3 | B | MATH 108 | Intro Calc:Business Applicatio | 3 |
| PHY 101 | Intro to Physics I | 4 | B | PHYS 103 | Princ/Devel Modern Phys | 4 |
| SDV 100 | College Success Skills | 1 | A | UNIV 100 | Freshman Transition | 1 |

3. COLLEGE XYZ

Attendance Period

Attendance Dates

Eval. Date

1 FA19-SU22

08/19/19-
08/08/22

8/7/23

Transfer Courses

George Mason Equivalent

| COURSE | TITLE | CR.HRS | GRD | COURSE | TITLE | CR.HRS |
|-----------------------------------|---------------------|--------------|-----|---|-------------------------|--------------|
| LA 248 | Business Law | 3 | B | BULE ---- | Business Elective | 3 |
| MKT 301 | Princ of Marketing | 3 | C | MKTG 303 | Principles of Marketing | 3 |
| PH 200 | Intro to Philosophy | 3 | B | PHIL 100 | Intro to Philosophy | 3 |
| TOTAL TRANSFER CREDIT HRS: | | 47.00 | | TOTAL GEORGE MASON CREDIT HOURS: | | 47.00 |

NOTE: Some departments require a syllabus review prior to awarding transfer credit. Please refer to the Transfer Credit Policy posted on the university website for information on the acceptance of transfer credit and the appeal process. All transfer credit, including credit by exam, should be submitted to the Office of Admissions prior to the end of your first semester of enrollment.

George Mason University reserves the right to modify a transfer credit evaluation at any time.



#WELCOME2MASON